



Garmin Nuvi 200 Speaker Replacement

Written By: Anjelica



INTRODUCTION

Replacing the speaker in a Garmin Nuvi 200.



TOOLS:

- [Phillips #00 Screwdriver](#) (1)
 - [T5 Torx Screwdriver](#) (1)
 - [iFixit Opening Tools](#) (1)
-

Step 1 — Rear Casing



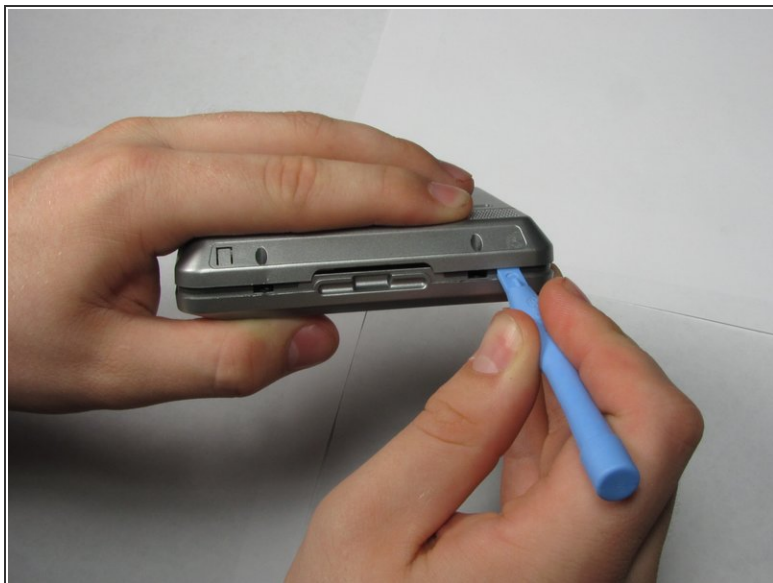
- Peel off the sticker from the bottom of the device to reveal two screws.

Step 2



- Remove two T5 Torx screws.

Step 3



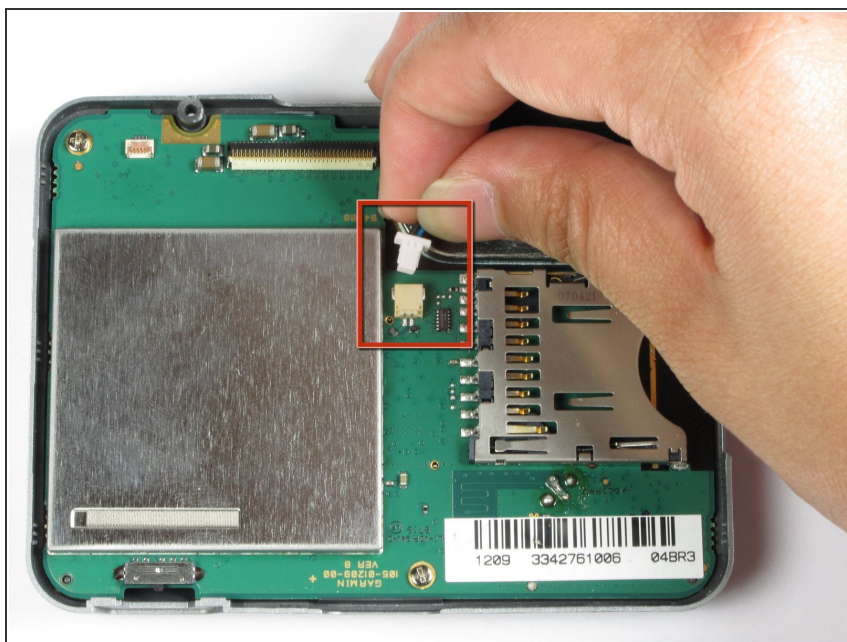
- Insert a plastic opening tool in the gap between the front and rear casing.
- Carefully work the tool around the gap, separating the two halves of the case.
- ⓘ Keep the power switch in place while removing the rear case.

Step 4 — Speaker



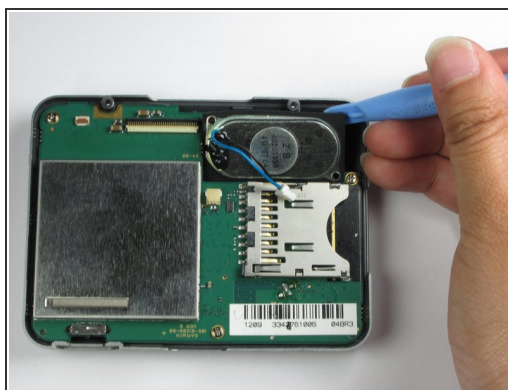
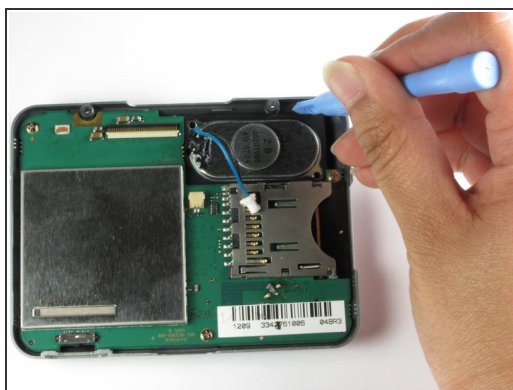
- Unscrew the two screws on opposite sides of the speaker using the #00 Phillips screwdriver.

Step 5



- Pull the cable out to detach the speaker from the logic board.

Step 6



- Wedge the iPod opener into the space between the speaker and the case.
- Apply pressure to pry the speaker away from the case.

To reassemble your device, follow these instructions in reverse order.