



# Garmin Nuvi 2455LMT Battery Replacement

This guide shows how to replace the battery in the Garmin Nuvi 2455LMT

Written By: Torrance Williams



---

## INTRODUCTION

This battery is a simple part to replace and will only take about 2-3 minutes. This guide requires a metal spudger and the Torx 4 screwdriver.



### TOOLS:

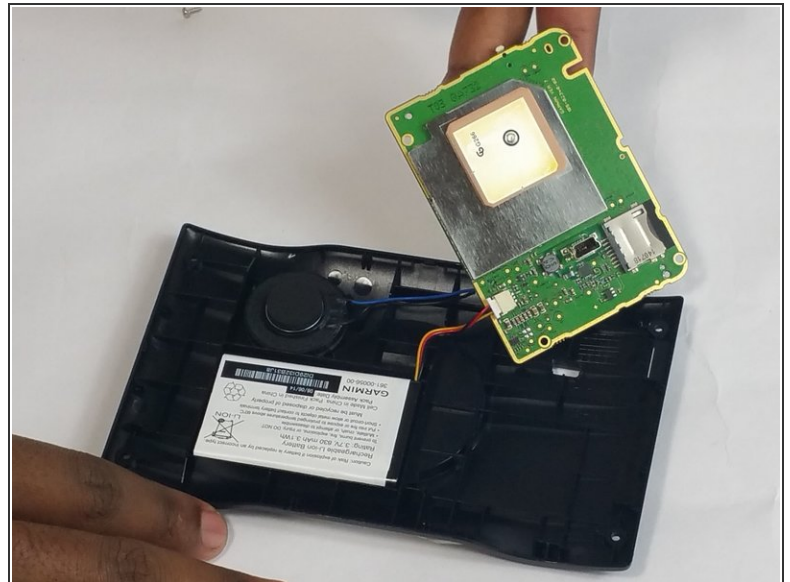
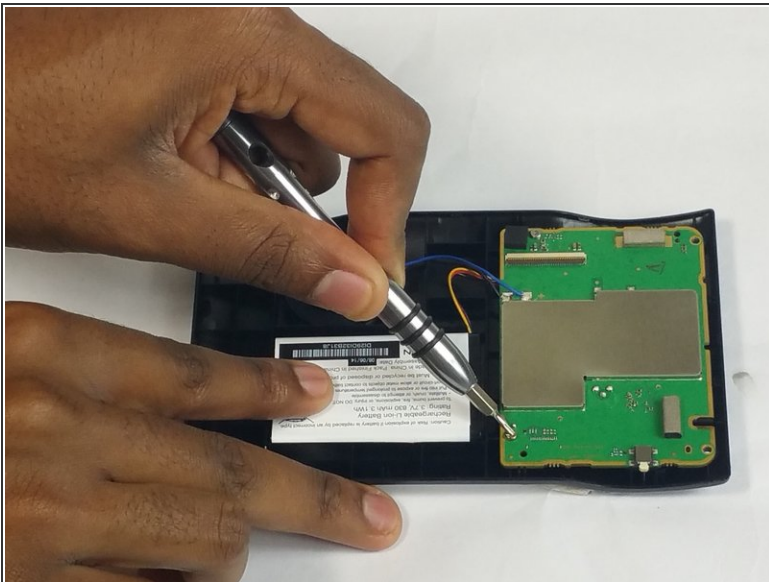
- [iFixit Opening Tools](#) (1)
  - [Tweezers](#) (1)
-

## Step 1 — Battery



- Remove the orange band from the motherboard to access screws.

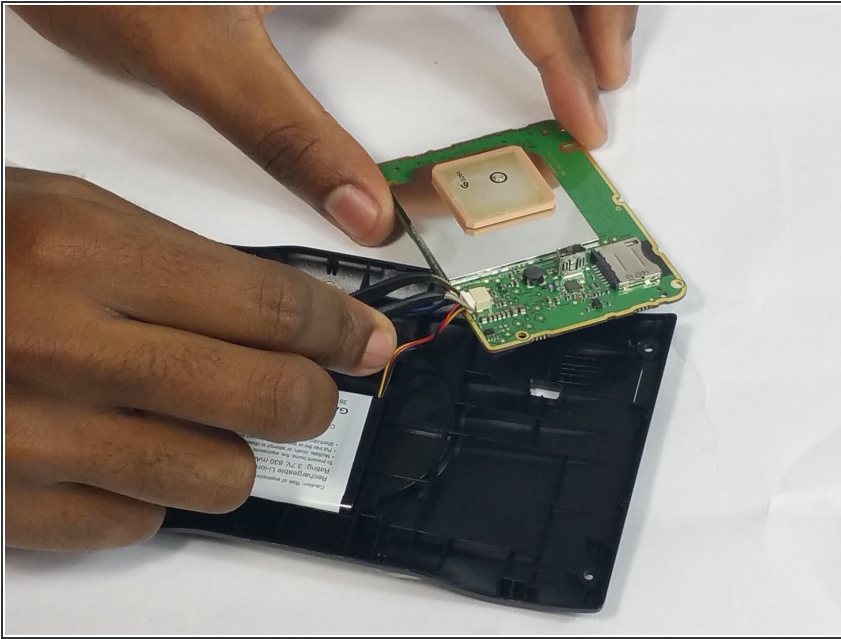
## Step 2



- Unscrew the motherboard from the device
- Lift the motherboard to reveal the cords underneath.

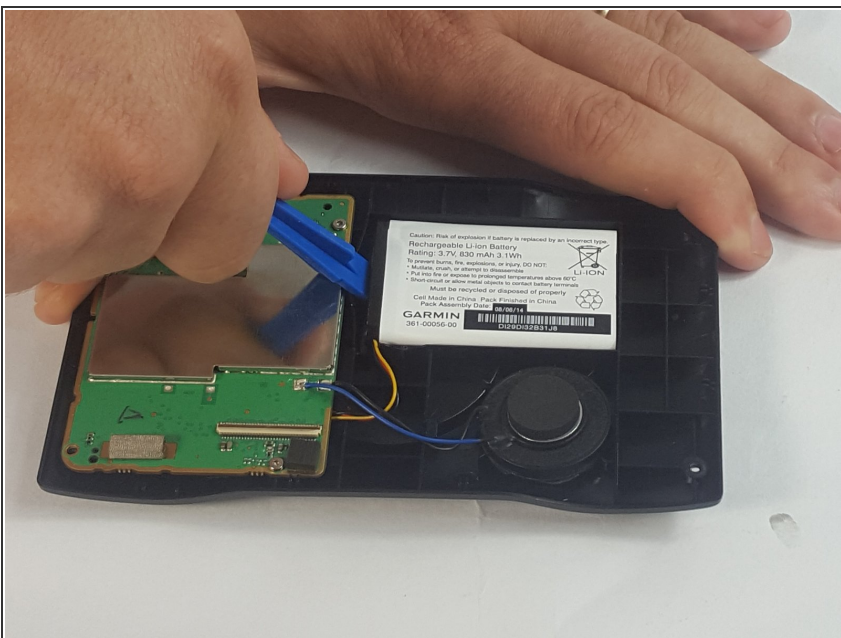


### Step 3



- Find the cord that connects the motherboard to the battery
- Disconnect this cord from the motherboard

### Step 4



- Using the plastic opening tool, pry the battery from the base of the device.

To reassemble your device, follow these instructions in reverse order.