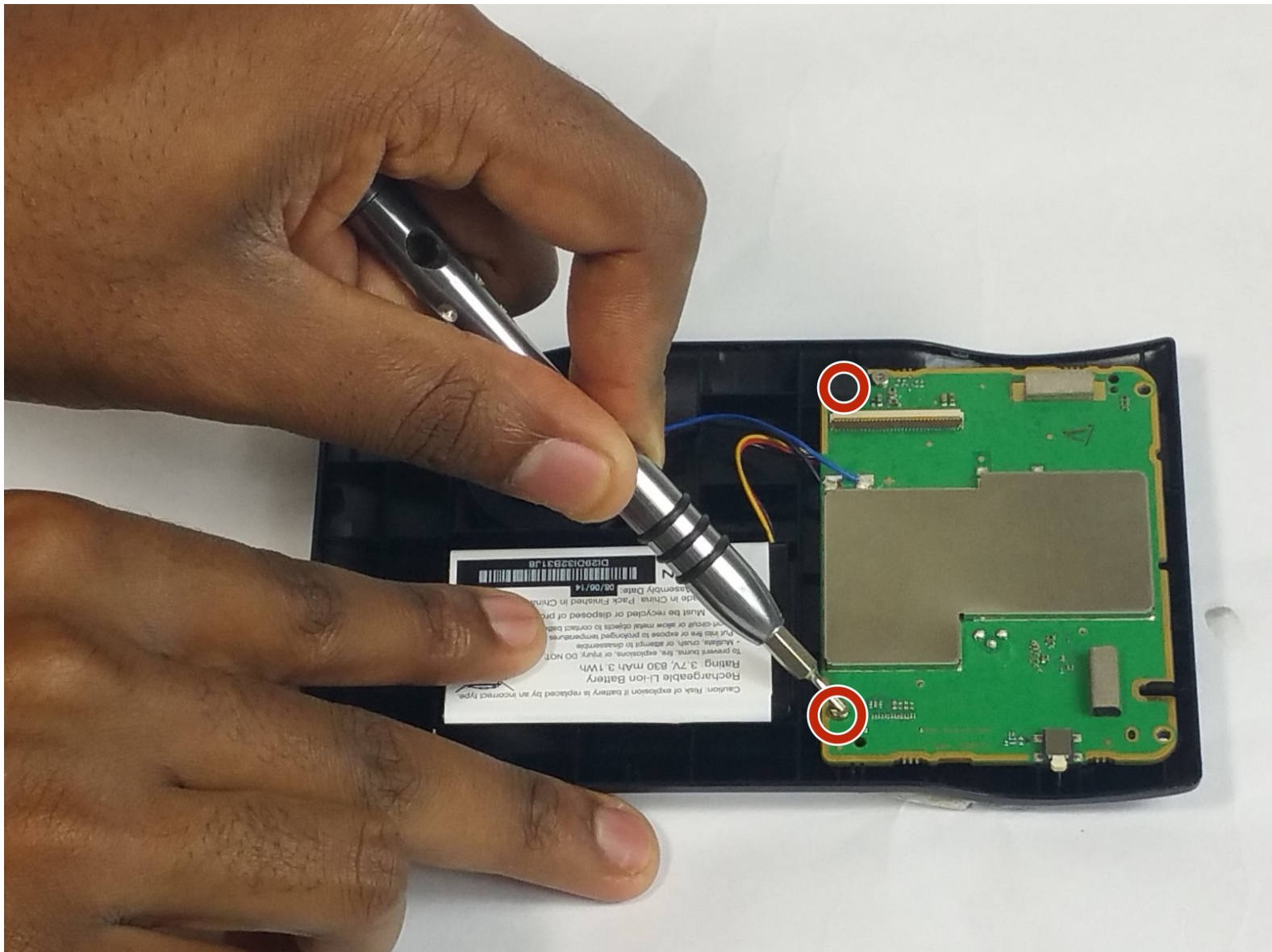




# Garmin Nuvi 2455LMT Mother Board Replacement

This guide shows how to open your Garmin Nuvi 2455LMT through the back panel assembly to access and replace the mother board assembly.

Written By: Nathaniel Williams



# INTRODUCTION

The mother board assembly is simple to replace and only takes 10-15 minutes to open the device and access the logic board. This guide requires a prying tool, the Torx 4 screwdriver, and the soldering kit.



## TOOLS:

- [iFixit Opening Tools](#) (1)
  - [T4 Torx Screwdriver](#) (1)
  - [Tweezers](#) (1)
-

## Step 1 — Back Panel Assembly



- Remove the four 2.5mm screws from the back assembly with a Torx #04 Screwdriver.
- Holding the GPS with a free hand while unscrewing the small screws will help stabilize the device.

## Step 2



- Use the plastic opening tool on all four sides of the device to open the Garmin Nuvi LMT2455 Back Panel.
- To properly remove the back cover assembly pry open both the back and sides of the assembly.

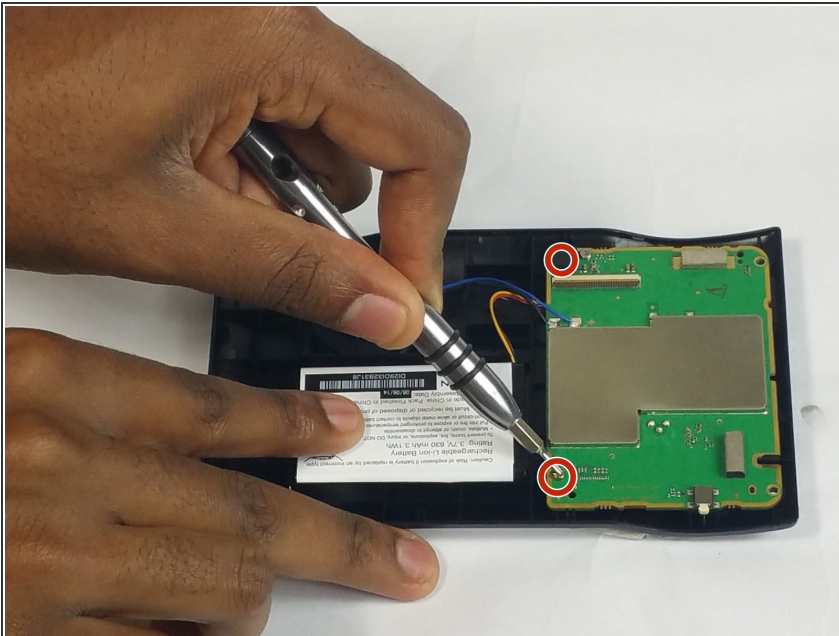


## Step 3



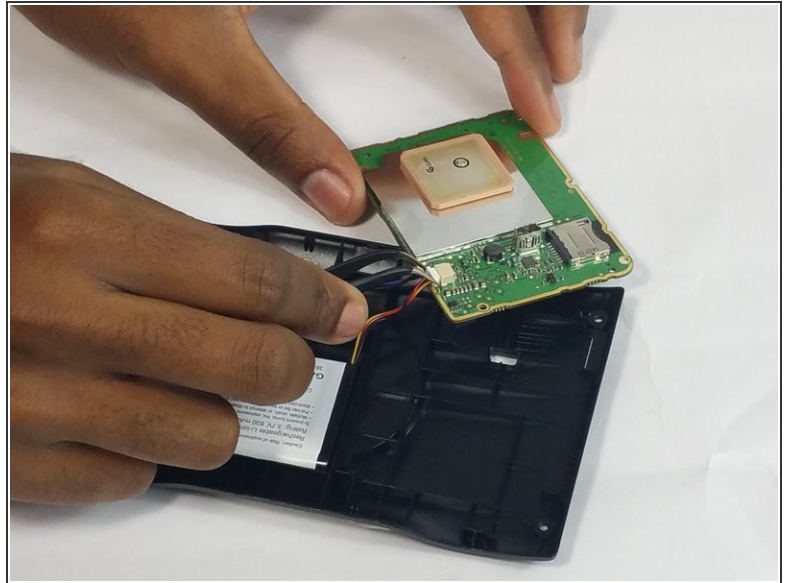
- Open the device carefully being wary of the orange band that is going from the screen to the motherboard.
- Remove the orange band by carefully lifting the lip that connects it to the motherboard.

## Step 4 — Mother Board



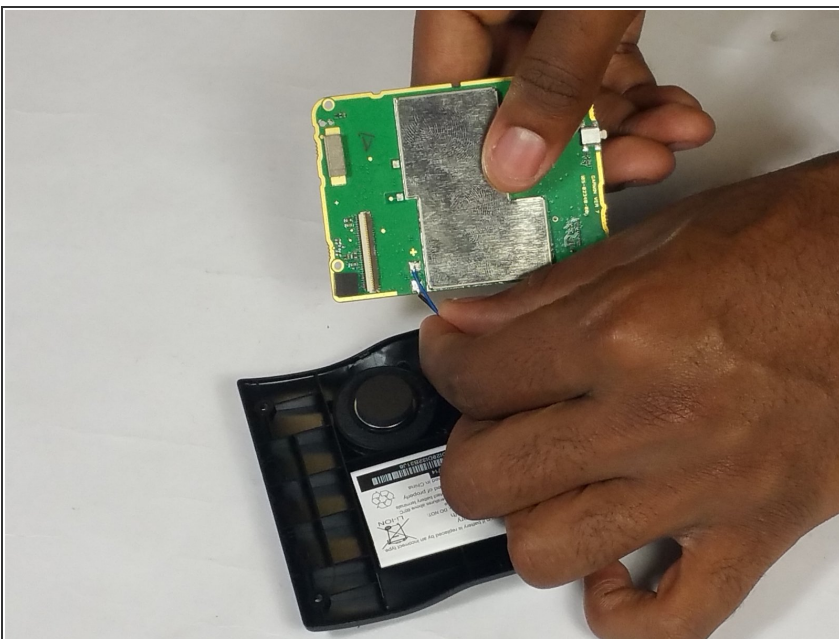
- Remove the two 1.0mm 04# Torx screws from the mother board assembly
- One screw can be found directly to the right of the battery and one screw can be found behind the orange band.
- Hold the GPS with a free hand to ensure stability.

## Step 5



- Place the screen portion of the GPS face down.
- Remove the mother board from the plastic back panel.
- Disconnect the battery with tweezers by gripping the white socket displayed in the photo. Wiggle the white socket out of the mother board.

## Step 6



- Use a soldering tool to de-solder the connection to the motherboard. Refer to the [iFixit Soldering guide](#) to see how

To reassemble your device, follow these instructions in reverse order.