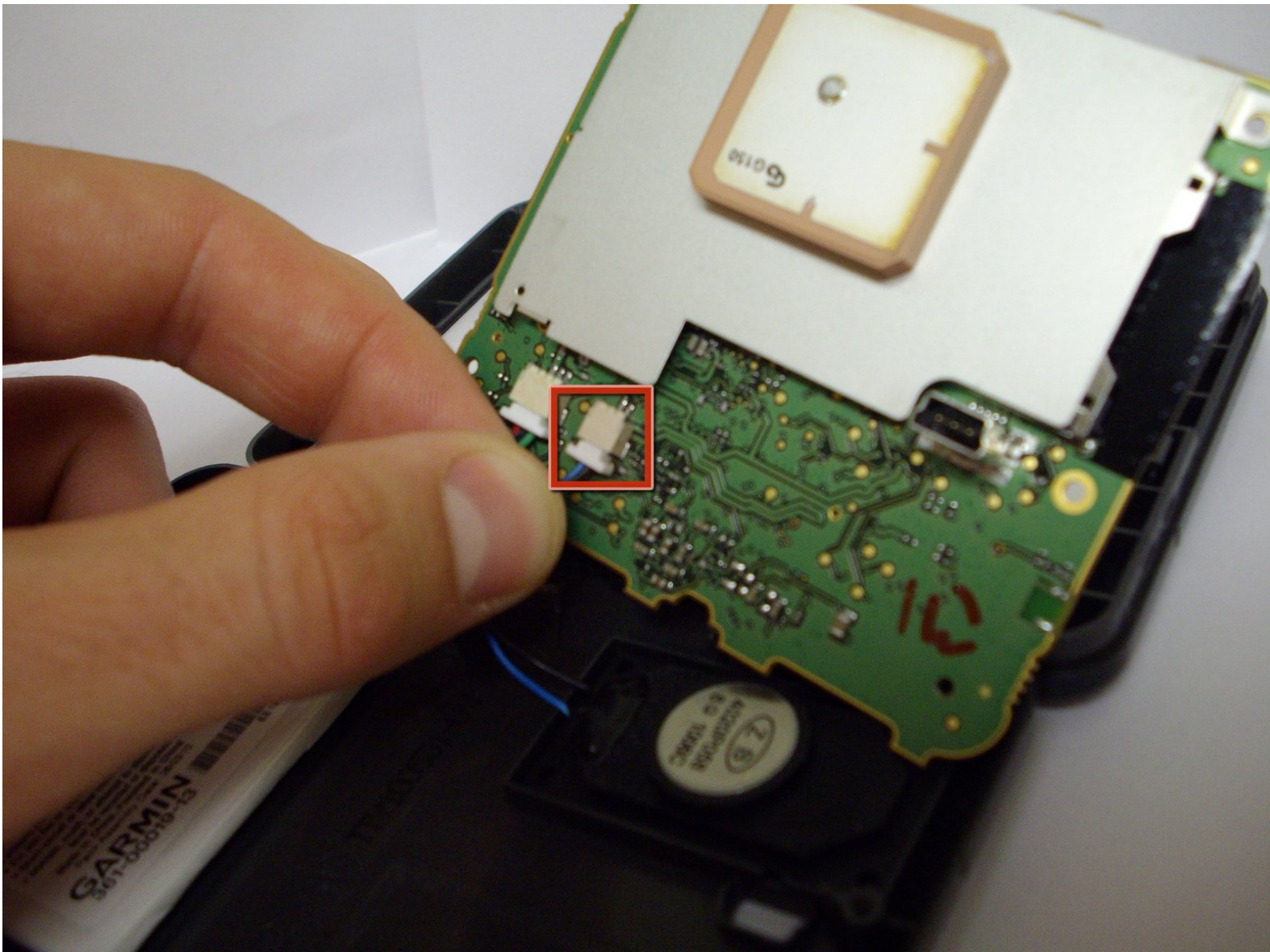




Garmin Nuvi 255W Speaker Replacement

Installing a new speaker for the Garmin Nuvi 255W.

Written By: Timothy



INTRODUCTION

If your speaker is defective, obtain a new speaker and replace the old one with the new working speaker.



TOOLS:

- [Phillips #00 Screwdriver](#) (1)
- [iFixit Opening Tools](#) (1)
- [T5 Torx Screwdriver](#) (1)



PARTS:

- [new Garmin Nuvi 255W speaker](#) (1)

Step 1 — Power Button



- Remove the barcode sticker at the bottom of the device.

Step 2



- Remove two 8.4 mm T5 screws from the bottom of the device.

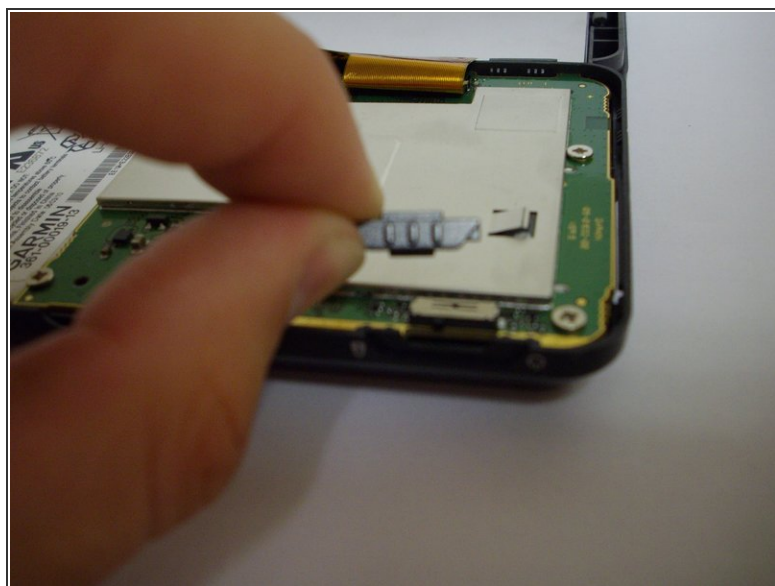
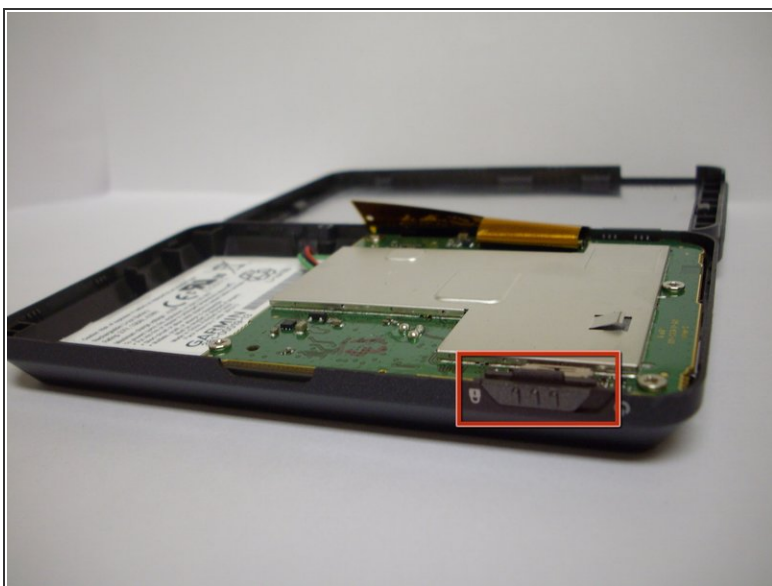
Step 3



- Using a plastic opening tool, carefully pry open the device.

⚠ Open the device carefully, making sure not to damage the gold ribbon cable that connects the screen to the motherboard.

Step 4



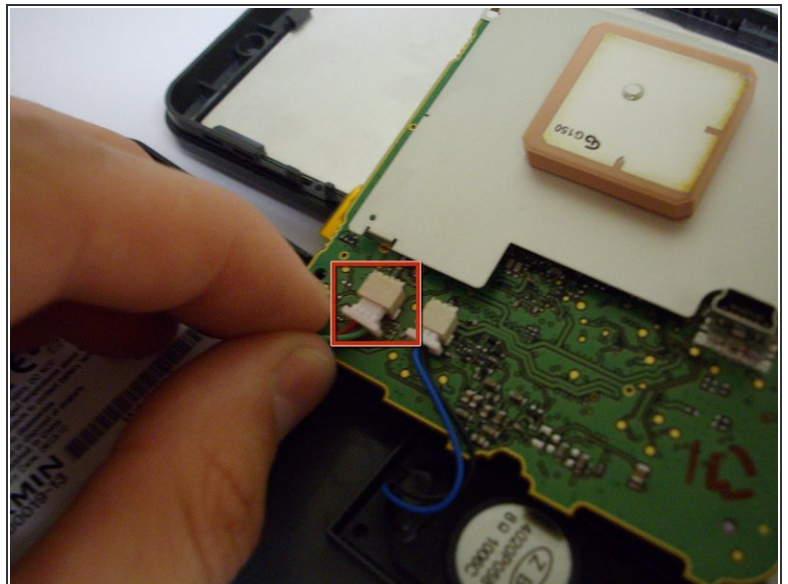
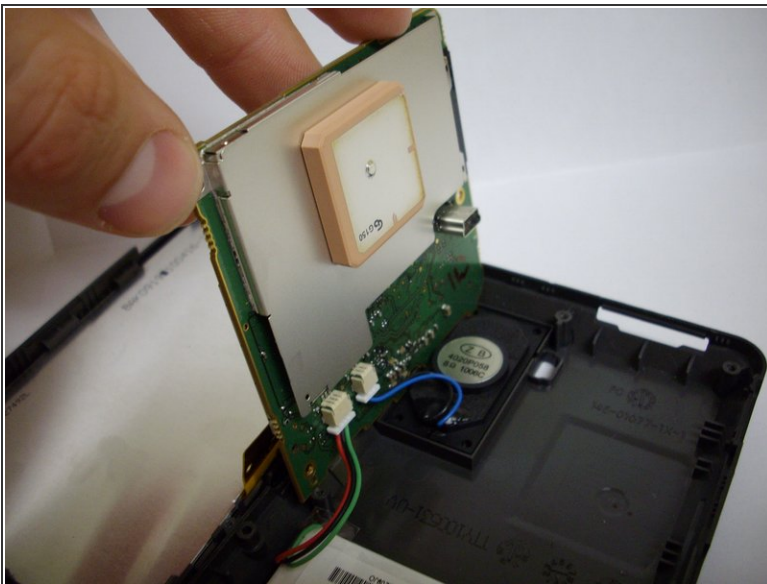
- Remove the power button.

Step 5 — Battery



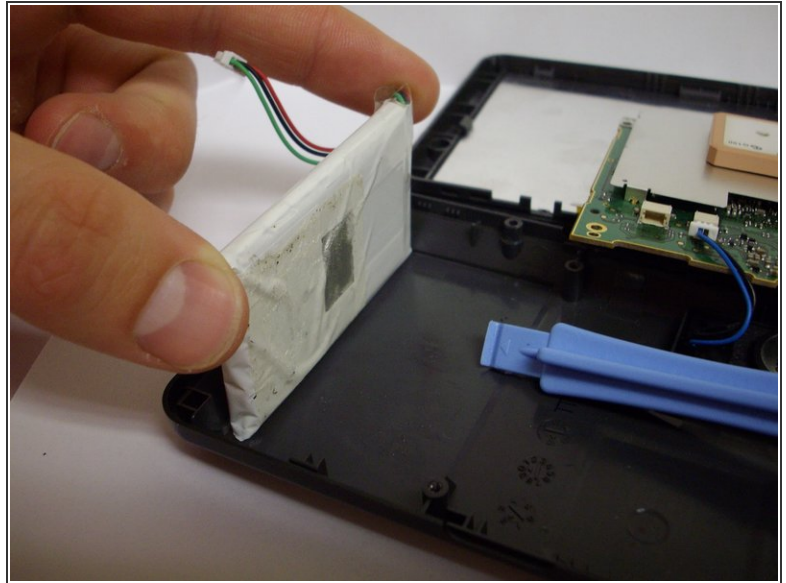
- Unscrew the four 6.70 mm screws holding the motherboard in place using a philips #0 screw driver.

Step 6



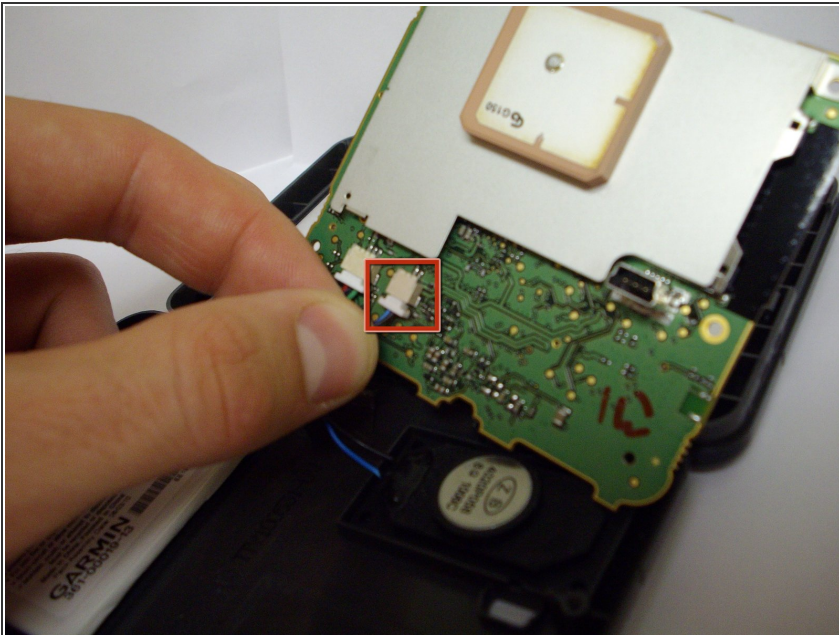
- Lift up the motherboard.
- Carefully disconnect the battery and motherboard. Slowly wiggling the connection makes it easier to disconnect the battery from the motherboard.

Step 7



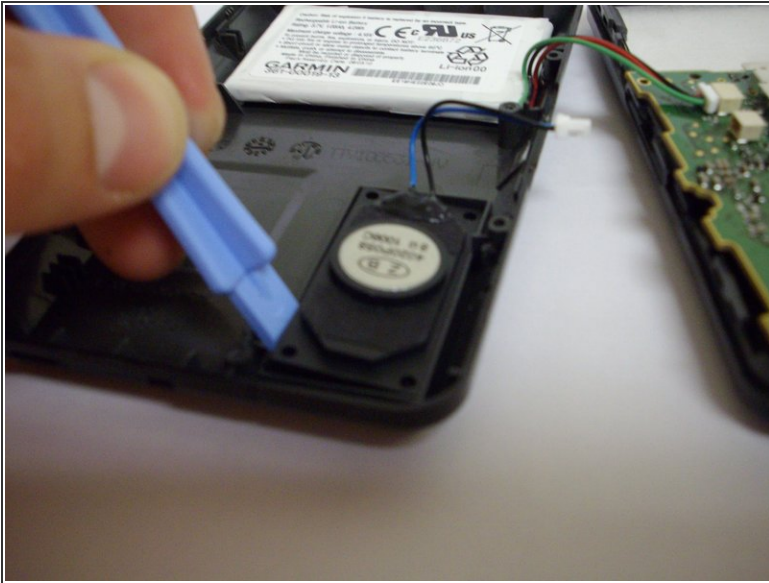
- Using the plastic opening tool as a wedge, pry the battery from the case. This can be fairly tough as the battery is glued to the case. Don't be afraid to use force and some good leverage.

Step 8 — Speaker



- Carefully disconnect the speaker from the motherboard. Slowly wiggling the connection makes it easier to disconnect.

Step 9



- Using a plastic opening tool, wedge the speaker away from the device. The speaker is glued to the case so use force and leverage.

To reassemble your device, follow these instructions in reverse order.