



Garmin Nuvi 255W Touch screen Replacement

Installing a new Touch Screen for the Garmin Nuvi 255W.

Written By: Ryan



INTRODUCTION

If your Touch Screen is cracked or scratched up, obtain a new Touch Screen and replace the old one with the new Touch Screen.



TOOLS:

- [Phillips #00 Screwdriver](#) (1)
Screwdriver
- [iFixit Opening Tools](#) (1)
- [T5 Torx Screwdriver](#) (1)



PARTS:

- [New Garmin Nuvi 255W Touch Screen](#) (1)

Step 1 — Power Button



- Remove the barcode sticker at the bottom of the device.

Step 2



- Remove two 8.4 mm T5 screws from the bottom of the device.

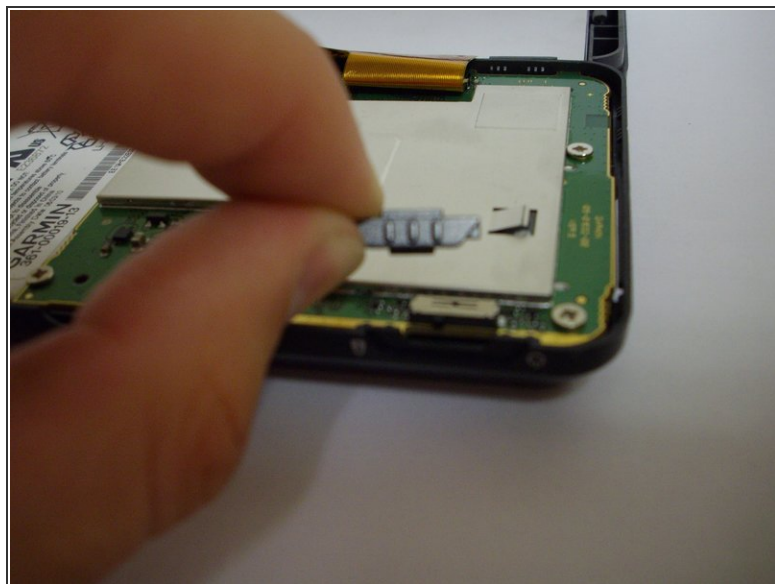
Step 3



- Using a plastic opening tool, carefully pry open the device.

⚠ Open the device carefully, making sure not to damage the gold ribbon cable that connects the screen to the motherboard.

Step 4



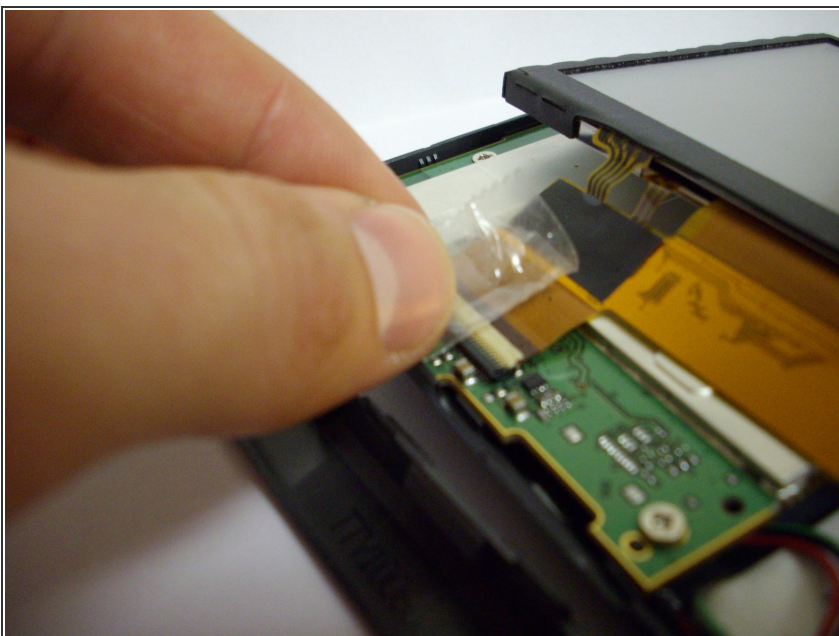
- Remove the power button.

Step 5 — Touch screen



- Remove touch screen by using the plastic opening tool as a wedge to pry the touch screen from the case.
- It is easiest to do this by pulling on the side tab as you wedge the touch screen away from the case.

Step 6



- Lift the touch screen above the mother board so that its position is similar to what is shown.
 - Remove the tape connecting the gold ribbon cable circuit to the motherboard.
- ⚠️ Peel the tape off slowly so there won't be any damage to the motherboard or gold ribbon cable.

Step 7



- Lift up the tab connecting the gold ribbon circuit to the motherboard, using a plastic opening tool if necessary.
- Gently remove the gold ribbon cable.
- ⓘ To insert a new screen in, attach the gold ribbon circuit to the motherboard by sliding it in place and pressing down on the tab. This may take a few attempts before it is connected successfully.

To reassemble your device, follow these instructions in reverse order.