



Garmin Nuvi 2589LMT Back Panel Assembly Replacement

Prerequisite Only

Written By: Adam Ferraro



INTRODUCTION

Prerequisite Only



TOOLS:

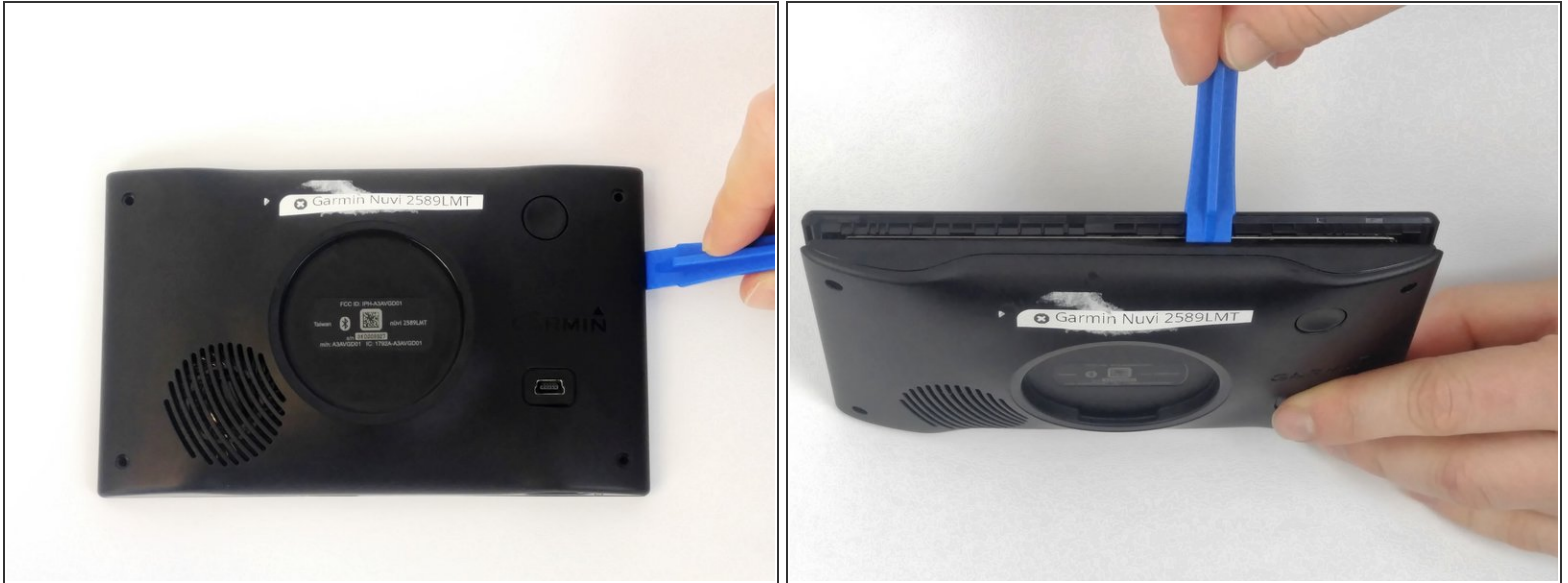
- [iFixit Opening Tools](#) (1)
 - [T5 Torx Screwdriver](#) (1)
-

Step 1 — Back Panel Assembly



- Using the T5 Torx Screwdriver, remove all 4 of the 5.7mm screws from the back of the device.

Step 2



- Using the plastic opening tools, pry the shorter sides of the device apart.
 - Once a gap has formed at the top of the device, insert the opening tool into the gap and slide it along the top of the device. Repeat for the bottom edge of the device to separate the LCD screen from the back.
- ⚠ Do not disconnect or tear the ribbon wiring, located at the bottom of the motherboard, when removing the back of the device.

To reassemble your device, follow these instructions in reverse order.