



Garmin Nuvi 2589LMT Battery Replacement

A simple guide to replace your Garmin Nuvi 2589LMT battery.

Written By: Adam Ferraro



INTRODUCTION

If your device is not turning on you may need to replace a dead or faulty battery. Use this guide to replace the battery in your Garmin NUVI 2589 by completing the following replacement guide.



TOOLS:

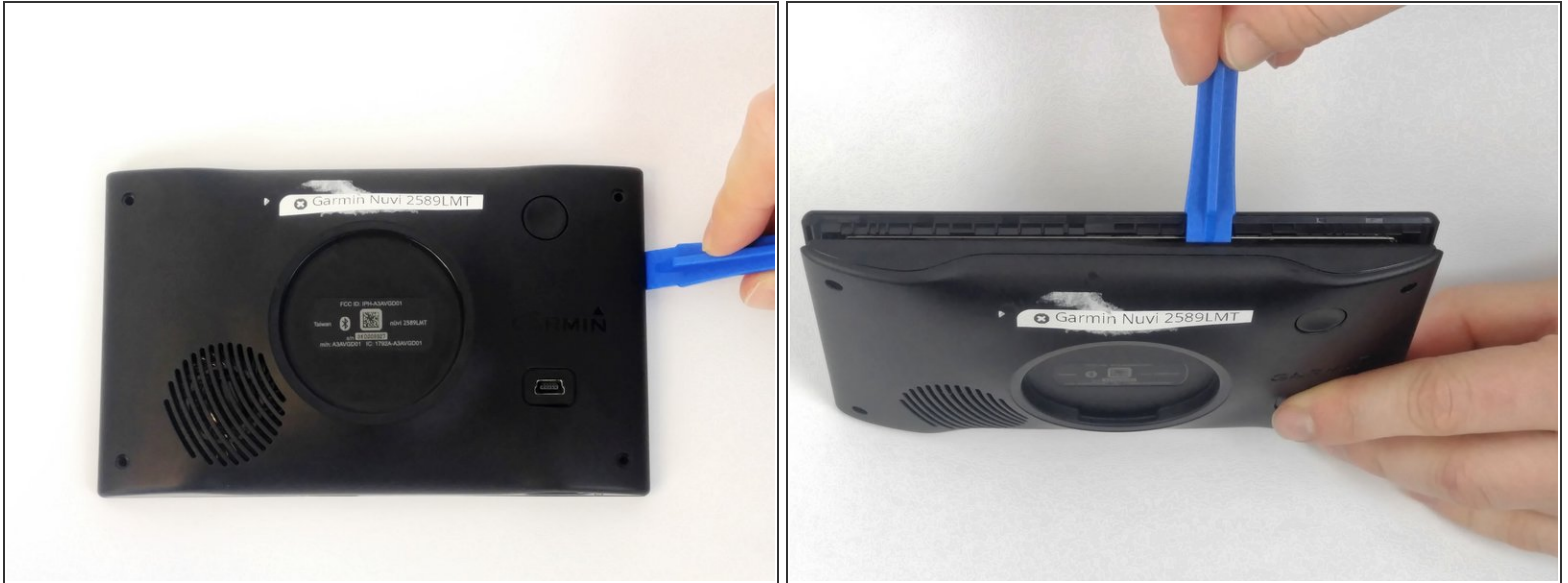
- [iFixit Opening Tools](#) (1)
 - [T5 Torx Screwdriver](#) (1)
 - [Precision Tweezers Set](#) (1)
-

Step 1 — Back Panel Assembly



- Using the T5 Torx Screwdriver, remove all 4 of the 5.7mm screws from the back of the device.

Step 2



- Using the plastic opening tools, pry the shorter sides of the device apart.
 - Once a gap has formed at the top of the device, insert the opening tool into the gap and slide it along the top of the device. Repeat for the bottom edge of the device to separate the LCD screen from the back.
- ⚠ Do not disconnect or tear the ribbon wiring, located at the bottom of the motherboard, when removing the back of the device.

Step 3 — Battery



- Using the angled tweezers, grip the red, black, and green wires connecting the battery to the motherboard, then gently lift away from the motherboard.

Step 4



- ① The battery is held in place by adhesive tape on the underside of the battery.
- Use the opening tools to gently pry underneath the battery and lift upwards to remove the battery.

To reassemble your device, follow these instructions in reverse order.