



Garmin Nuvi 2589LMT Display Assembly Replacement

A simple guide to replace your Garmin Nuvi 2589LMT display/touch screen.

Written By: Adam Ferraro



INTRODUCTION

Replace a cracked or malfunctioning display/touch screen to your Garmin NUVI 2589LMT device. Replacing the the display screen requires careful attention to detail, but requires a small amount of time.



TOOLS:

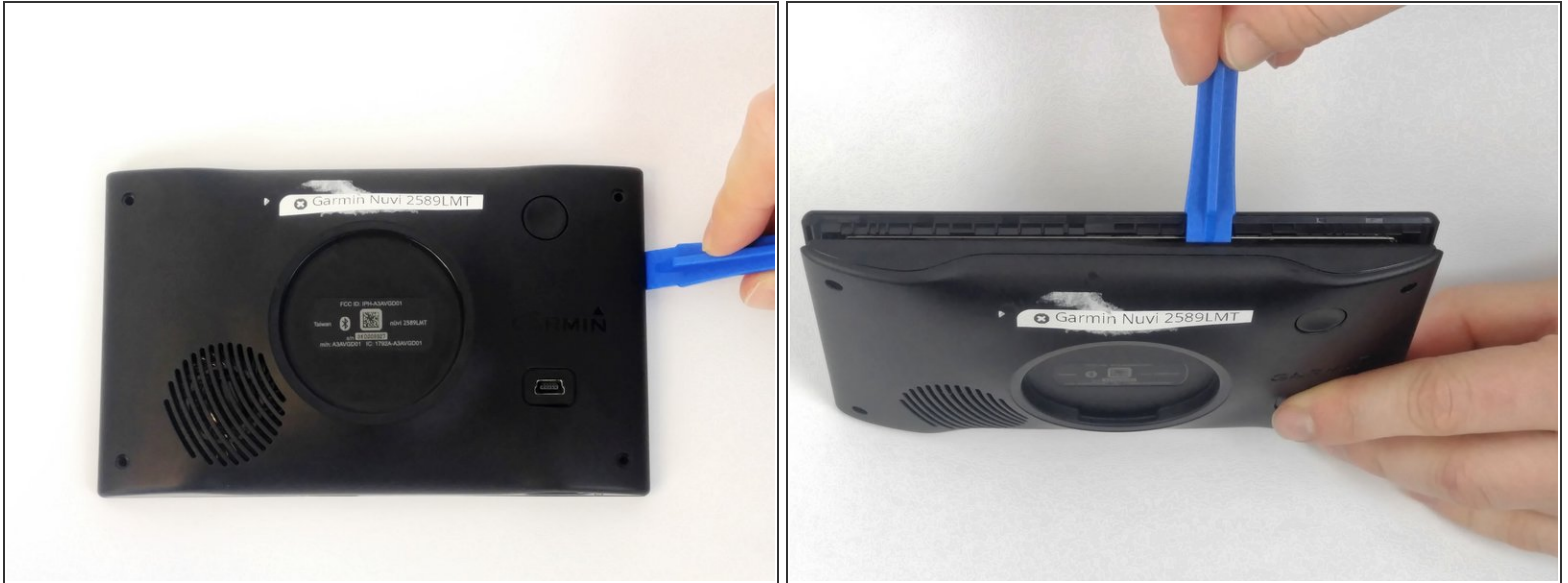
- [T5 Torx Screwdriver](#) (1)
 - [iFixit Opening Tools](#) (1)
 - [Tweezers](#) (1)
-

Step 1 — Back Panel Assembly



- Using the T5 Torx Screwdriver, remove all 4 of the 5.7mm screws from the back of the device.

Step 2



- Using the plastic opening tools, pry the shorter sides of the device apart.
 - Once a gap has formed at the top of the device, insert the opening tool into the gap and slide it along the top of the device. Repeat for the bottom edge of the device to separate the LCD screen from the back.
- ⚠ Do not disconnect or tear the ribbon wiring, located at the bottom of the motherboard, when removing the back of the device.

Step 3 — Display Assembly



- Using the tweezers, gently pull the ribbon wiring near where it connects to the motherboard to disconnect the ribbon wiring and the display screen from the motherboard.
- Remove the screen from the device.

To reassemble your device, follow these instructions in reverse order.