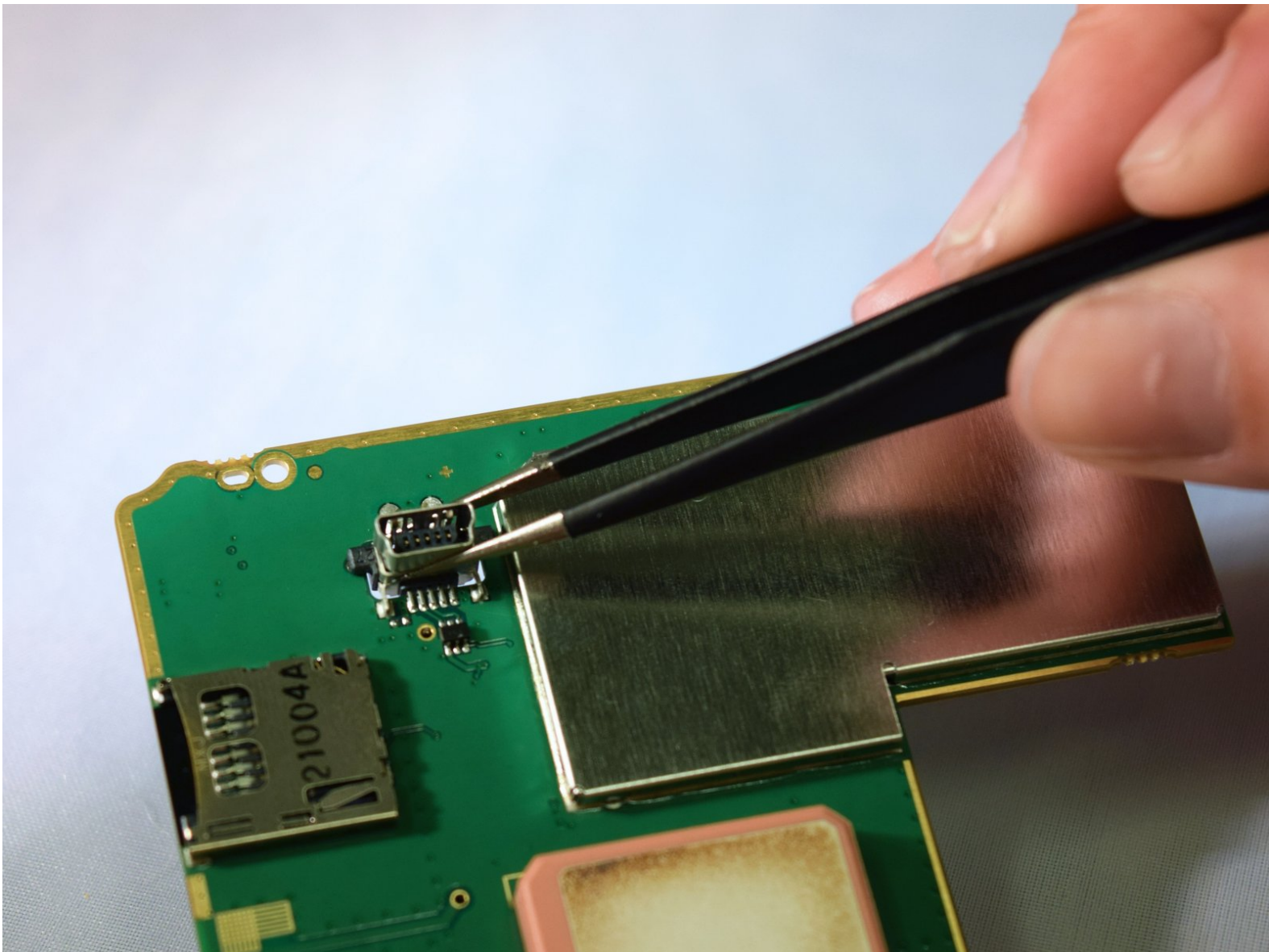




Garmin Nuvi 2595LMT USB Port Replacement

This guide will help instruct the replacement of a faulty USB Port.

Written By: Marisa Inahara



INTRODUCTION

Problems with charging the battery? The USB port bent out of shape and unable to plug into the charging cable? It might be time to replace the USB Port.



TOOLS:

- [Portable Soldering Iron](#) (1)
- [Solder](#) (1)
- [T5 Torx Screwdriver](#) (1)
- [Spudger](#) (1)



PARTS:

- [Garmin Nuvi 2595Lmt Replacement Port](#) (1)

Step 1 — Garmin Nuvi 2595LMT Back Cover Replacement



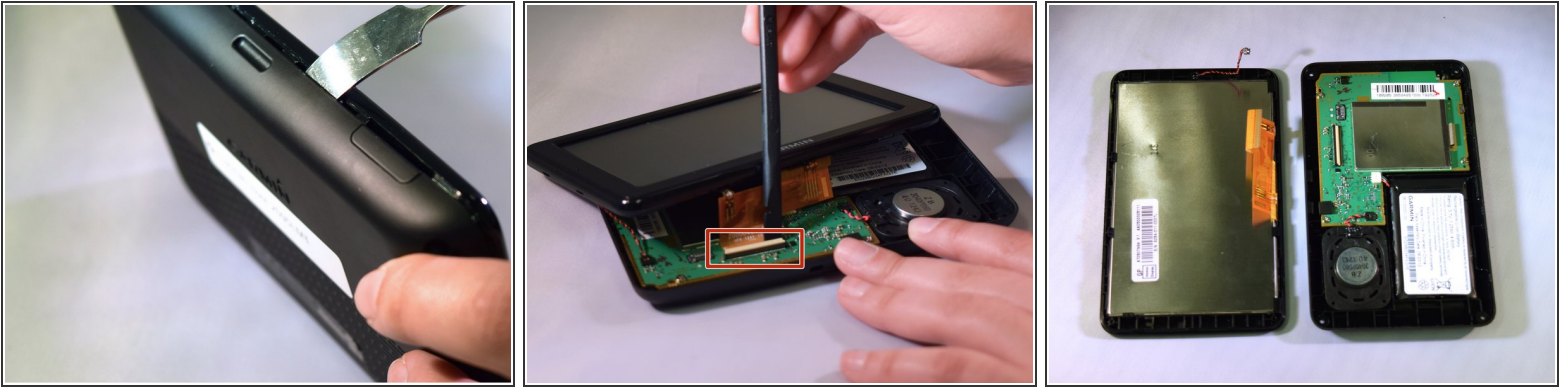
- Place the device on the workspace so the screen is facing downward.

Step 2



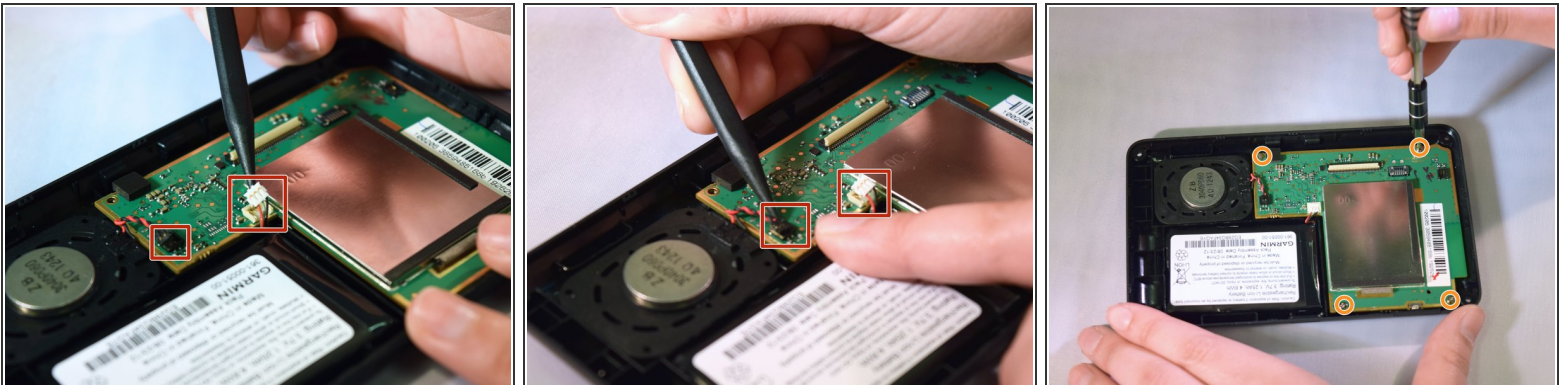
- Using the t5 screwdriver from the iFixit Pro Tool Kit, remove all four 5.6mm screws placing them safely on the table.

Step 3



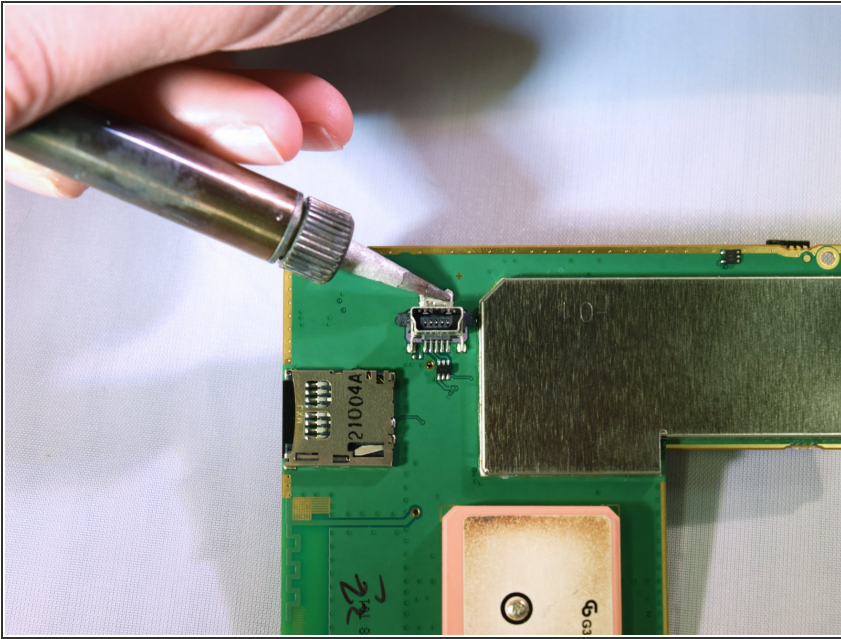
- Grab a spudger from tool kit.
- Pry open sides of Nuvi gently with spudger (do not rip apart).
- Use plastic opening tool to pry ribbon slowly from white plastic bar.
- Separate the two pieces and place them on the table

Step 4 — USB Port



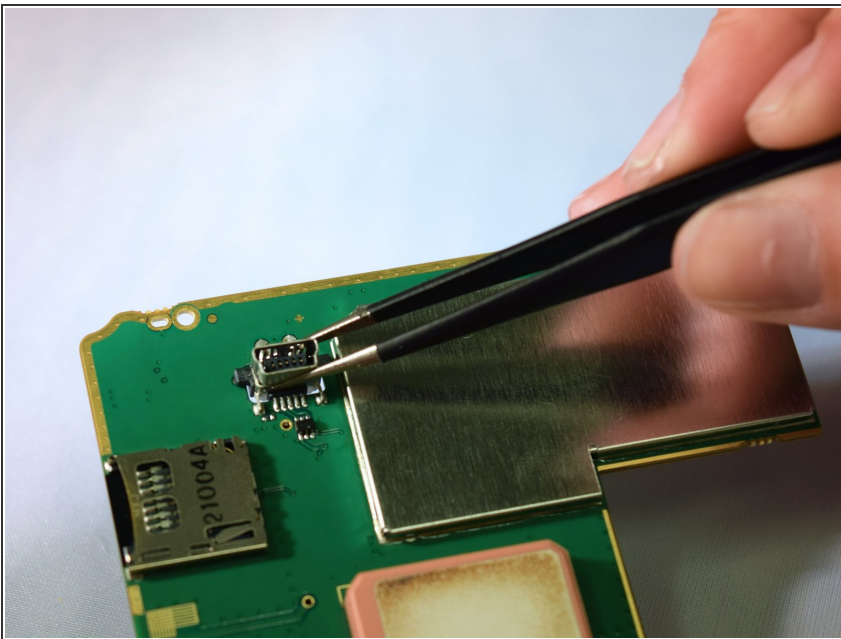
- Remove the t5 screwdriver head and replace it with the j000 screwdriver head from the toolkit.
- Disconnect all the wires from the circuit board.
- Using the j000 screwdriver, remove all four 5.1 mm screws from the circuit board and place them safely on the table (separate from the case ones)
- Gently pry circuit board from the bottom shell and place it gently on the work surface

Step 5



- Gently and delicately heat up the solder holding the USB port to the circuit board.
- Carefully remove the USB Port using the metal tweezers from the toolkit.
- Place the old USB Port on a protected work surface that won't light on fire.

Step 6



- Grab the replacement USB port with the metal tweezers from the toolkit.
- Grab the solder and place it on the location of the previous USB port.
- Place the replacement port and place it over the solder.
- While holding the USB port in place with the tweezers, use the soldering iron to heat up the solder underneath the port.
- Let the port cool for an hour.

To reassemble your device, follow these instructions in reverse order.