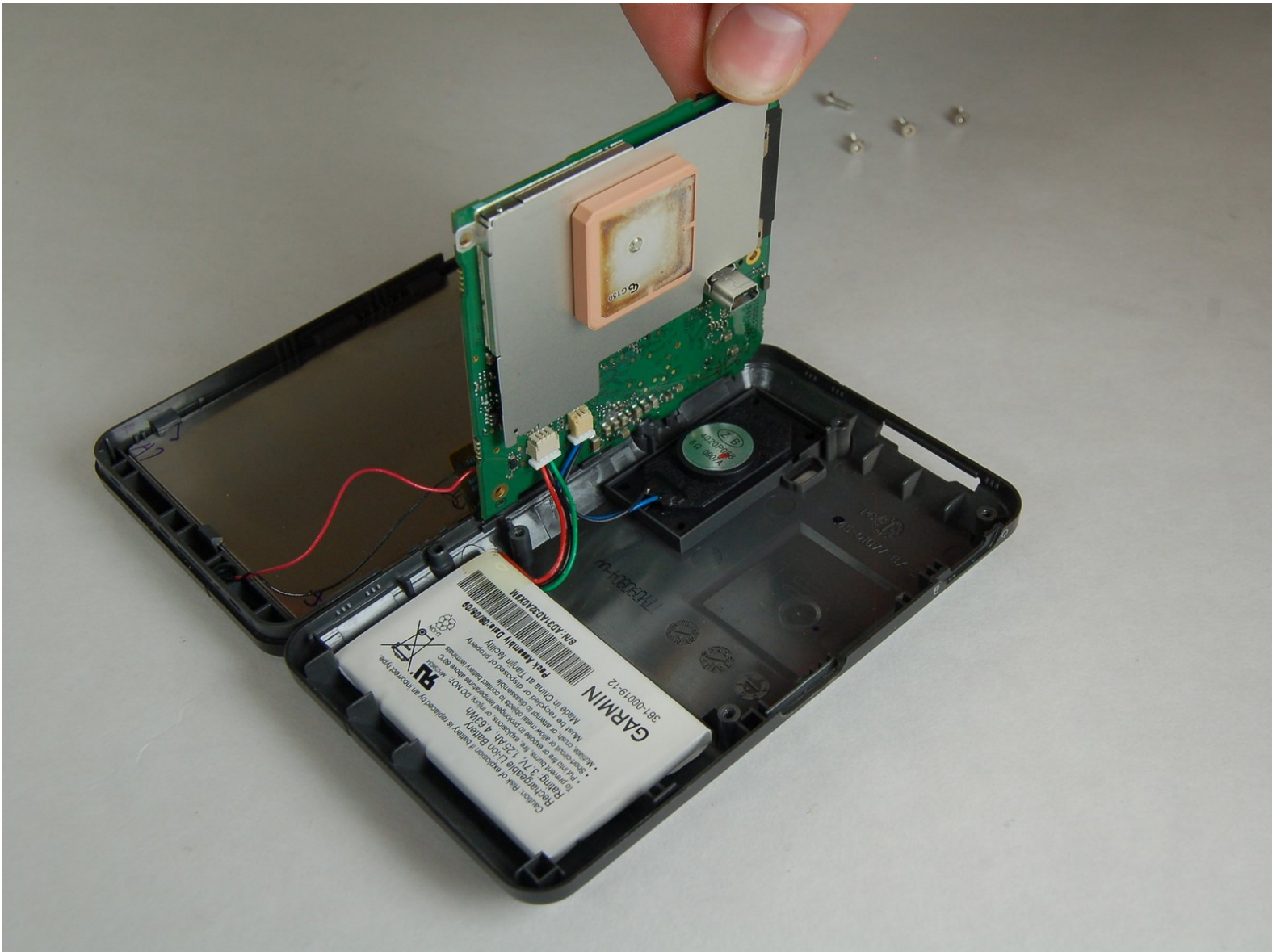




Garmin Nuvi 265WT Battery Replacement

Written By: Patricia Gonzalez

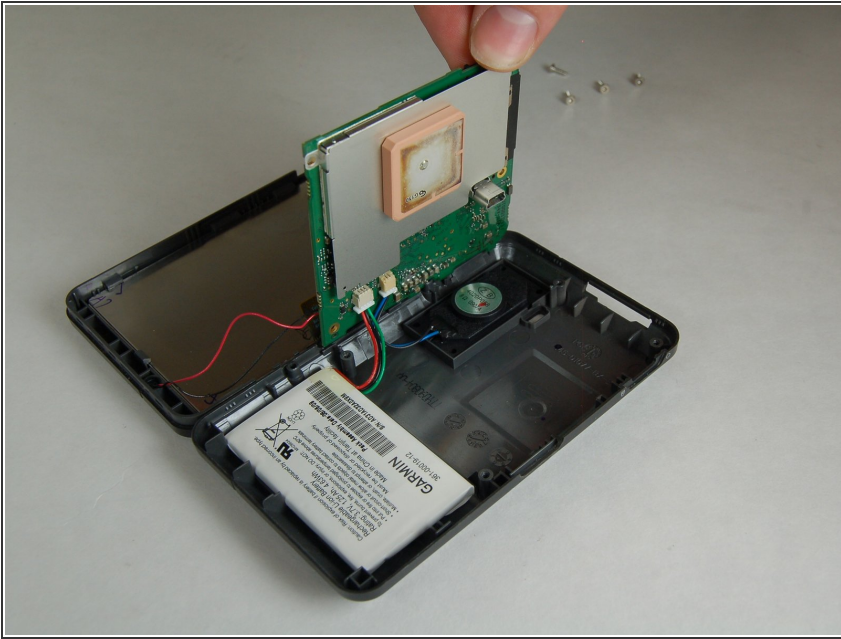




TOOLS:

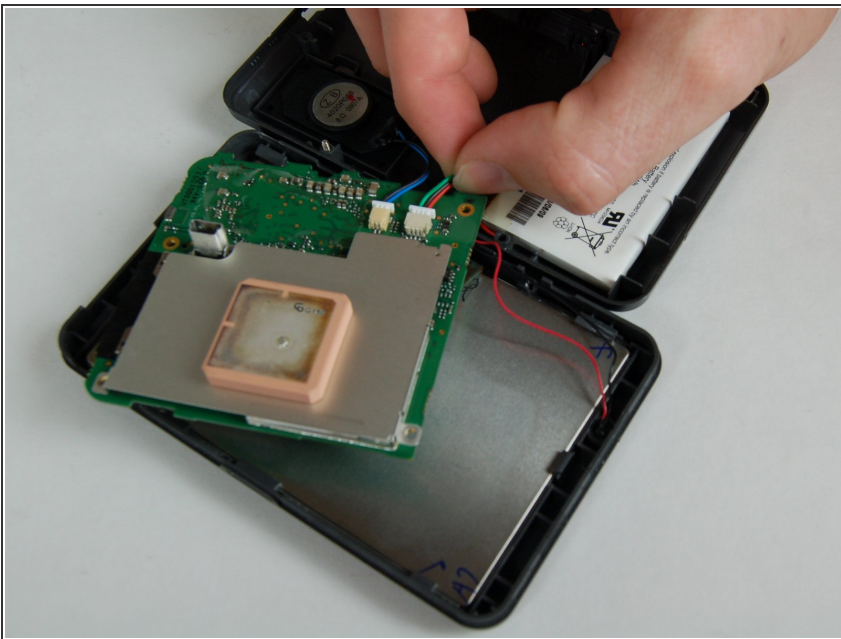
- [Spudger](#) (1)
-

Step 1 — Battery



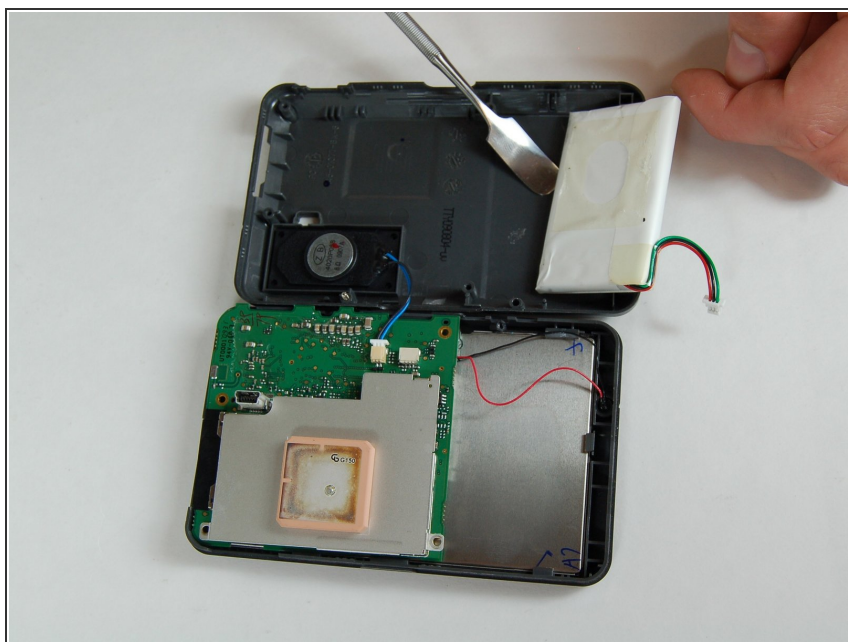
- Lift up the Mother Board

Step 2



- Slowly unclip by pulling the green, and red wire.

Step 3



- Use the nylon spudger to remove the battery.
- ⚠ The regular black nylon spudger should be used whenever possible, especially around batteries and other sensitive internal components.

To reassemble your device, follow these instructions in reverse order.