



Garmin Nuvi 2689LMT Main Circuit Board Replacement

This guide will show you how to replace the main circuit board for the Garmin Nuvi 2689LMT step-by-step.

Written By: Spencer



INTRODUCTION

The main circuit board controls all aspects of the device. It also houses the Blue-tooth and satellite up-link components.

TOOLS:

- [T5 Torx Screwdriver](#) (1)
 - [iFixit Opening Tools](#) (1)
 - [Heavy-Duty Spudger](#) (1)
-

Step 1 — Main Circuit Board



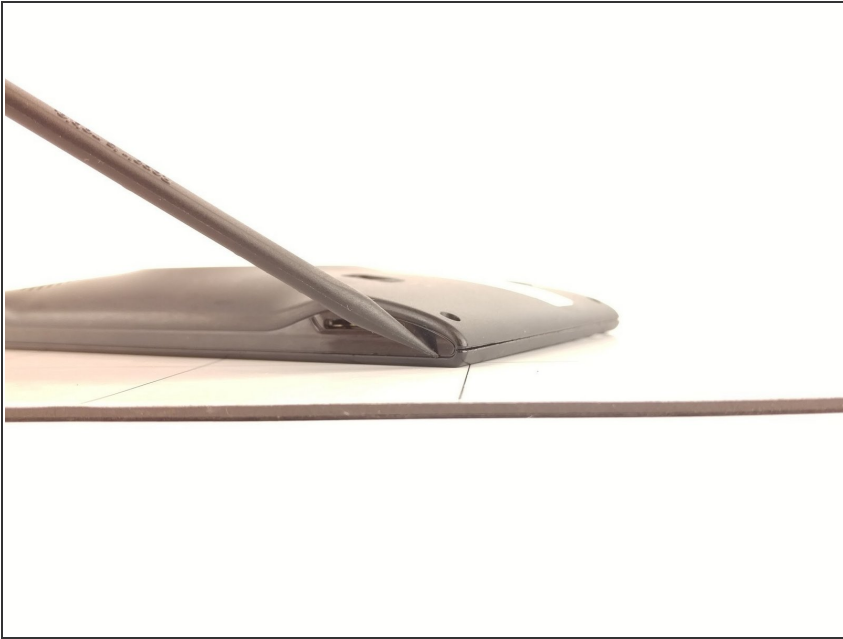
- Begin by removing the stand by depressing the tab and rocking the round interface back toward you, pulling it away from the Garmin unit.

Step 2



- Remove the four, 4mm hex screws at the four corners of the device using a T5 bit.

Step 3



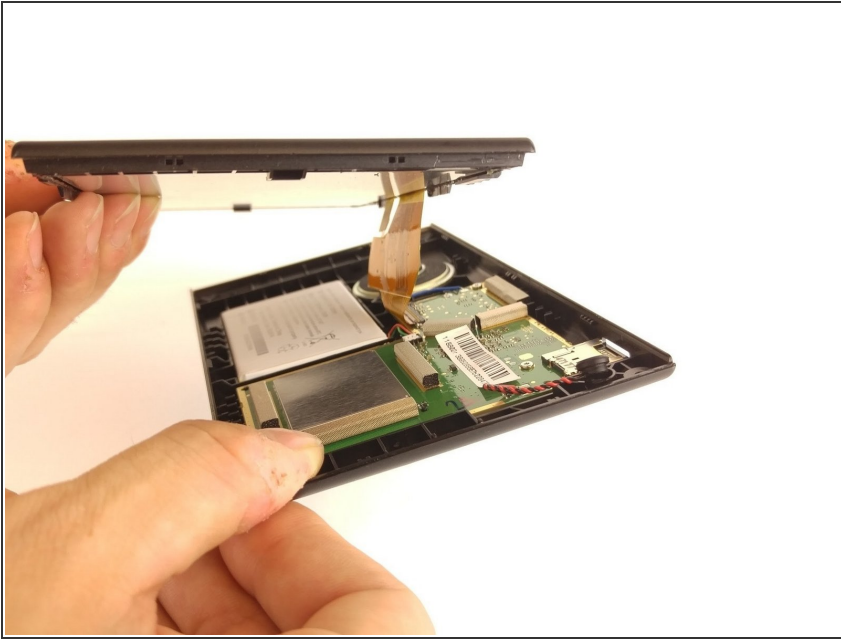
- ① Place the unit screen-side down flat, with the bottom facing you. There are two seams, the one on top is artificial.
- Pry open the seam with a prying tool.

Step 4



- Firmly force a plastic spudger into the bottom seam and pry open a section. Use a prying/pushing motion to force the spudger into the unit.
- Repeat this all the way around the seam.

Step 5



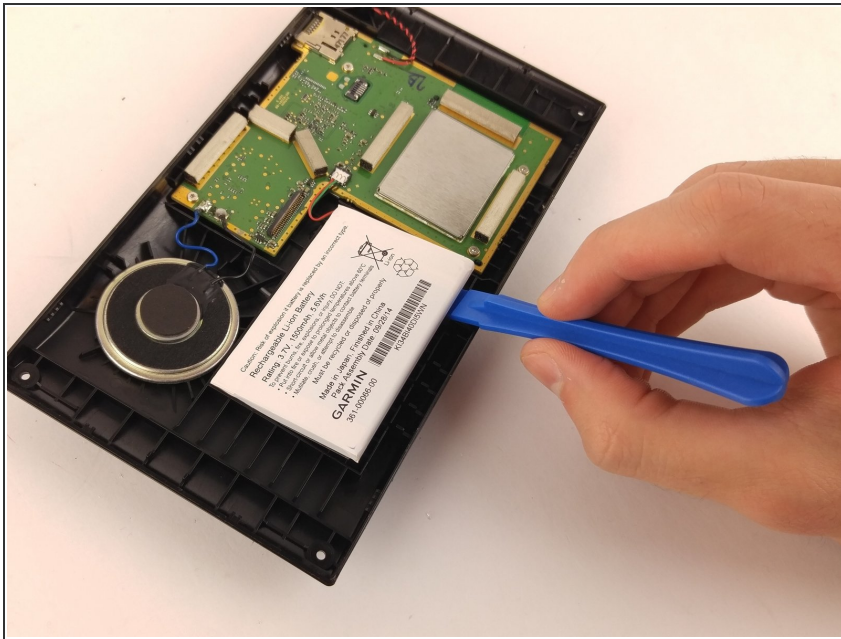
- ⓘ Do not attempt to separate the unit until all the tabs have been separated. Once the seam is completely separated, you can lift the back away from the screen easily.

Step 6



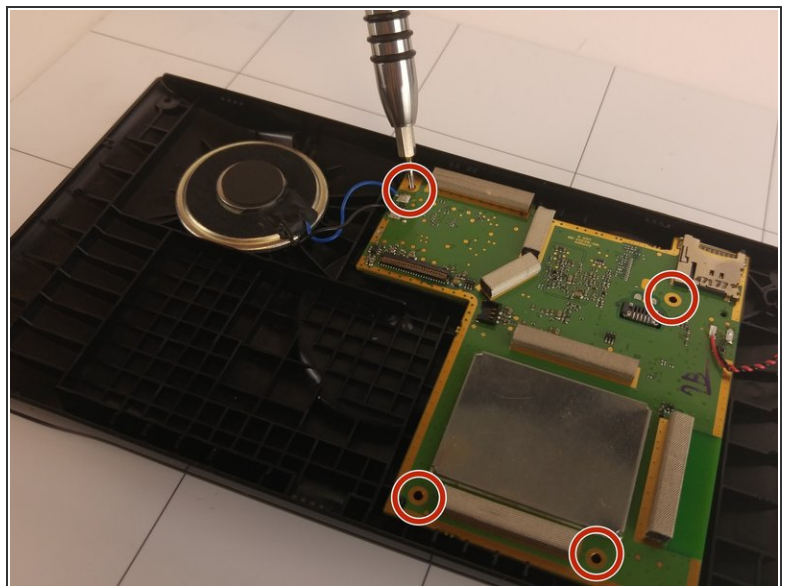
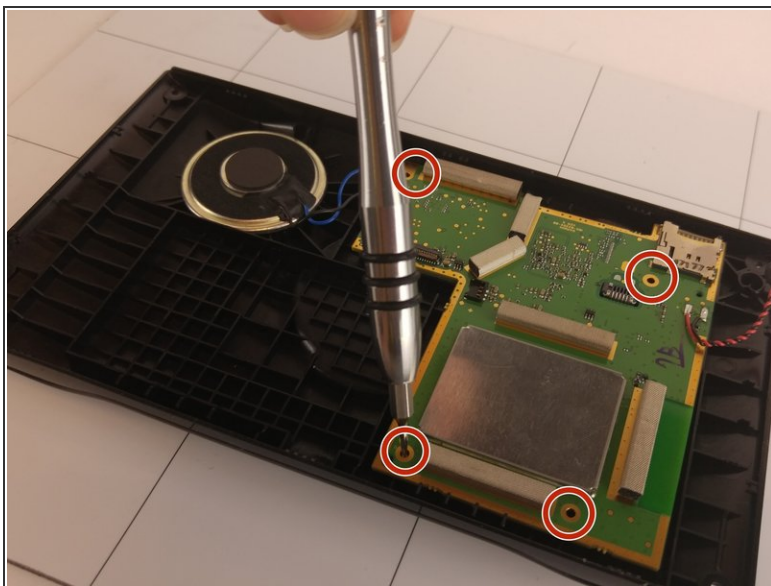
- ⓘ The battery is connected to the main circuit board via two wires, red and green in color, and is attached with a white connector.
- Detach with a pry tool.

Step 7



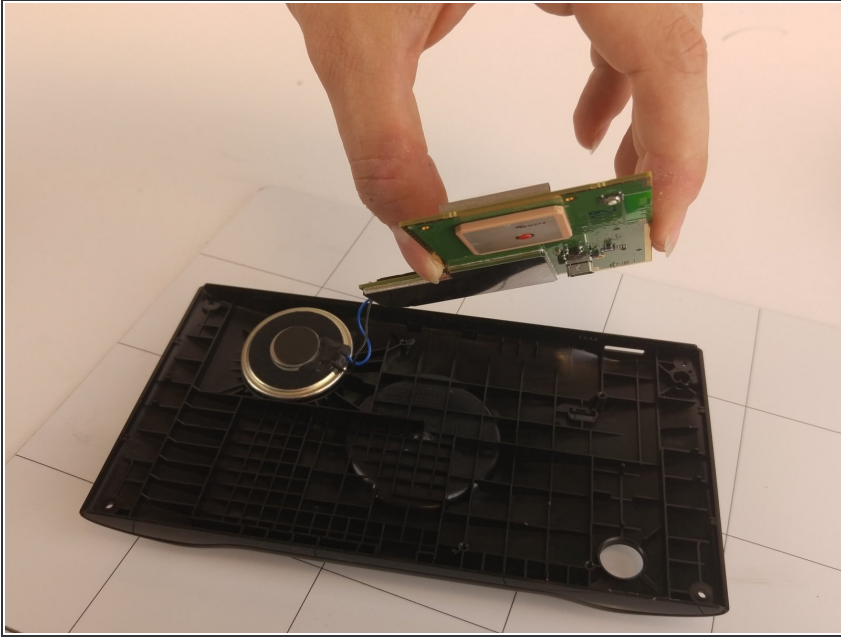
- The white battery is attached to the casing with an adhesive. Separate it with a prying tool.
- ❗ Removing the battery protects it from damage and gives you more room to work.

Step 8



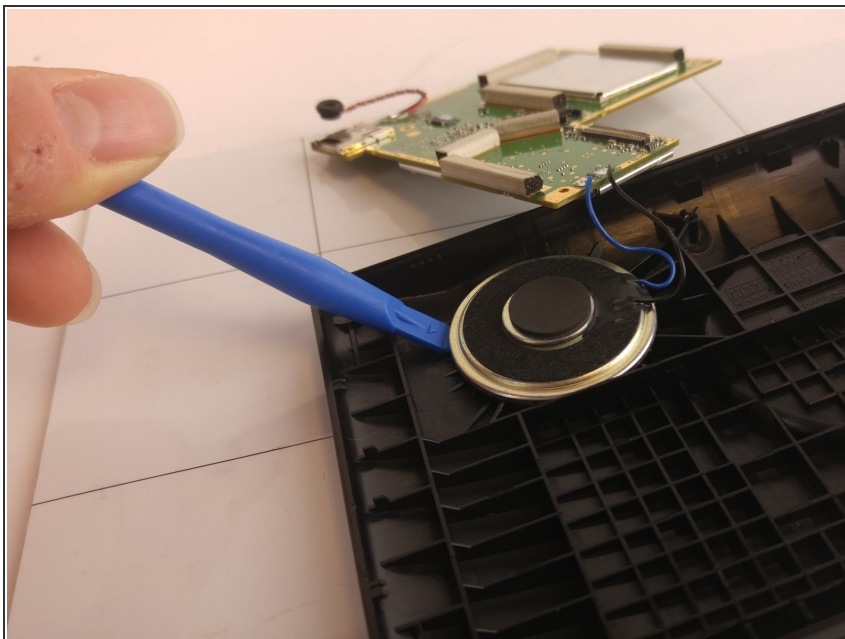
- Remove the four, 4mm hex screws with a T5 bit.
- These are located near the four corners of the main circuit board, as shown.

Step 9



- Carefully pick up and remove the main circuit board from the device's plastic casing.

Step 10



- Remove the speaker - located on the device as shown - from the plastic casing using a prying tool. Use the prying tool around the entire rim of the speaker to ensure a clean removal.

To reassemble your device, follow these instructions in reverse order, using a new circuit board.