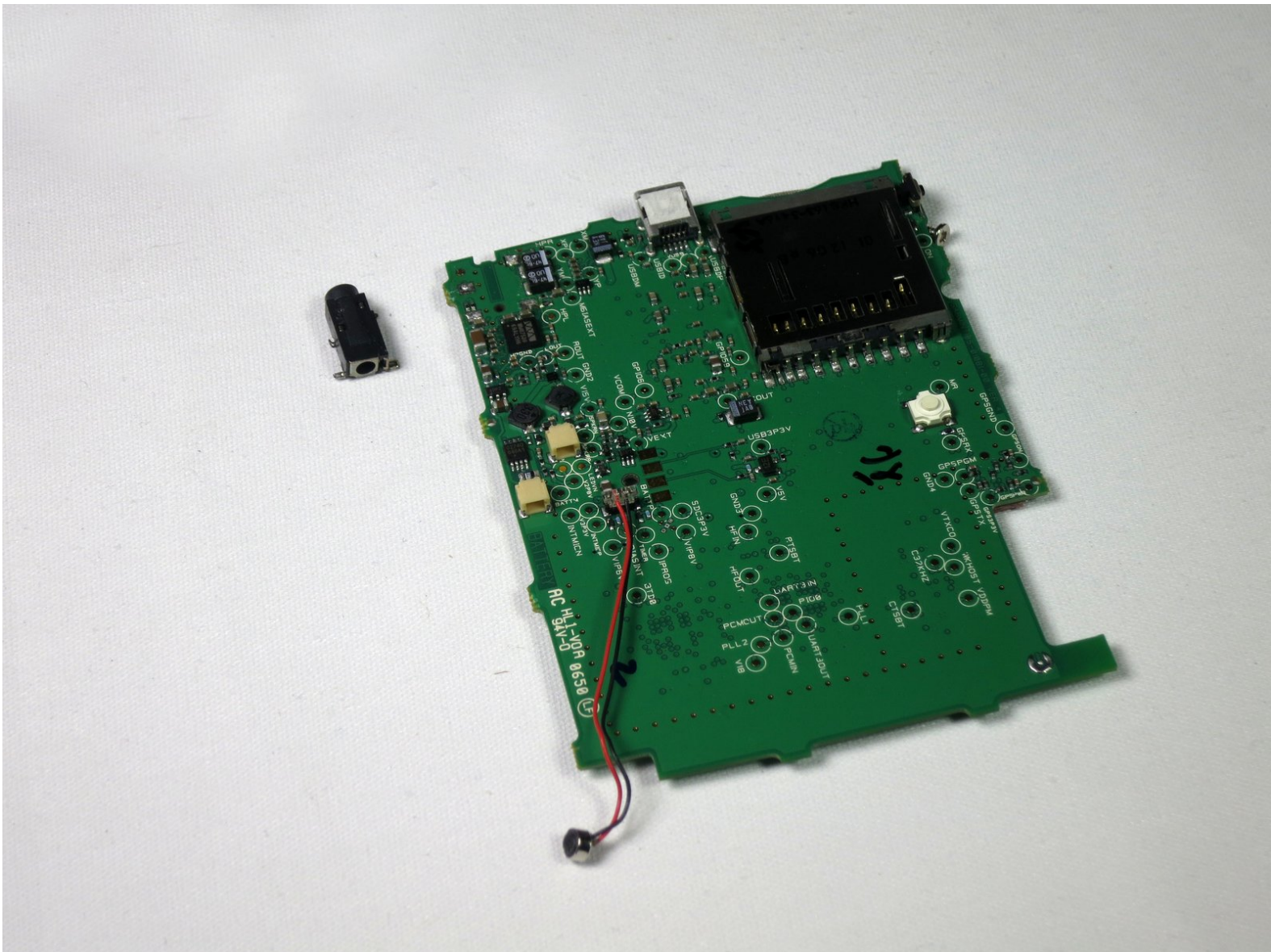




Garmin Nuvi 370 Auxiliary Audio Out Port Replacement

This step by step guide will show you how to disassemble your Garmin Nüvi 370 in order to access and replace the auxiliary audio out port.

Written By: Matt West



INTRODUCTION

In this guide the repairer replaces the auxiliary audio out port of the device by disassembling to expose the motherboard and desoldering the component.

Prerequisite Guide:

[Disassembling Garmin Nuvi 370 Into Core Components](#)

Tools Used:

- Fine Point Tweezers
- Spudger
- Soldering Iron
- Solder Extraction Tool
 - Copper Braid
 - Solder Sucker

Estimated Duration: 15 minutes



TOOLS:

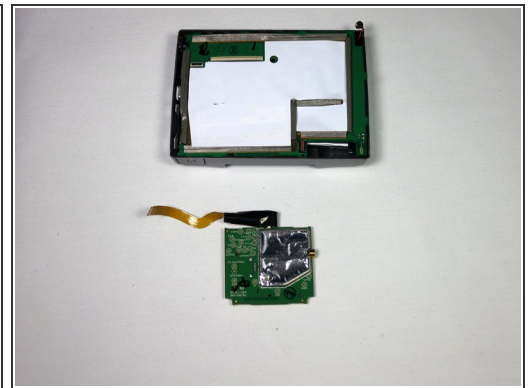
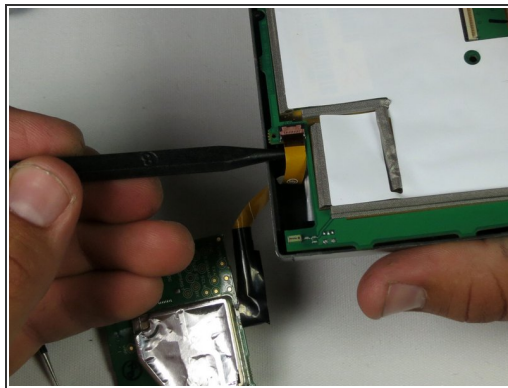
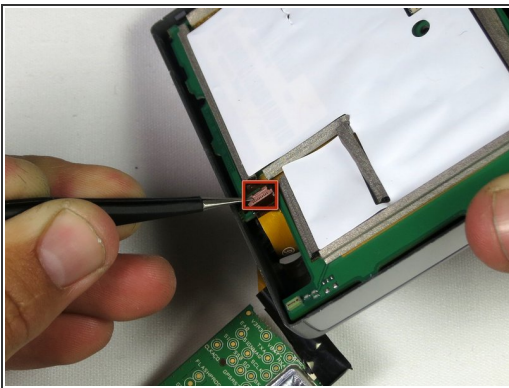
- [Tweezers](#) (1)
 - [Soldering Workstation](#) (1)
-

Step 1 — Auxiliary Audio Out Port



- After following the instructions in the [main dis-assembly guide](#), you should have the screen detached from the motherboard.

Step 2



- Use the tweezers or the spudger to lift the tan latch off the ribbon cable (ZIF connector) and gently pull out the ZIF connector and cable from underneath the opened latch.

Step 3



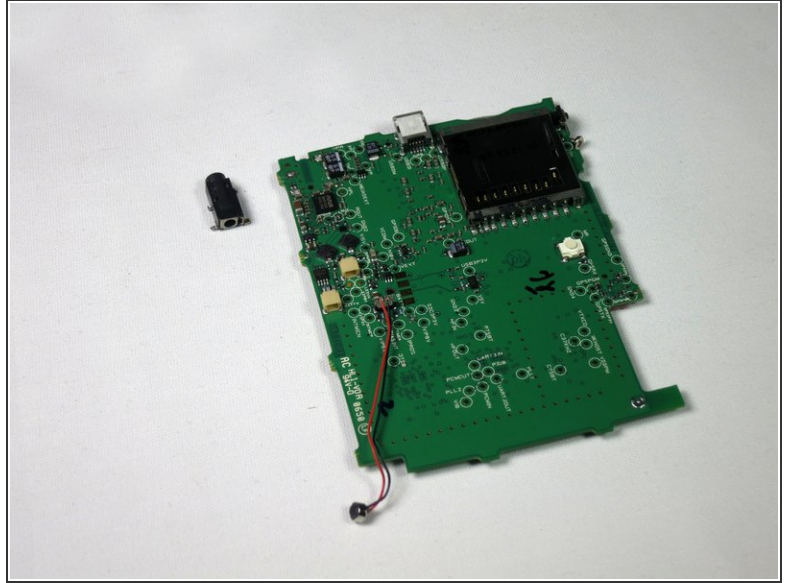
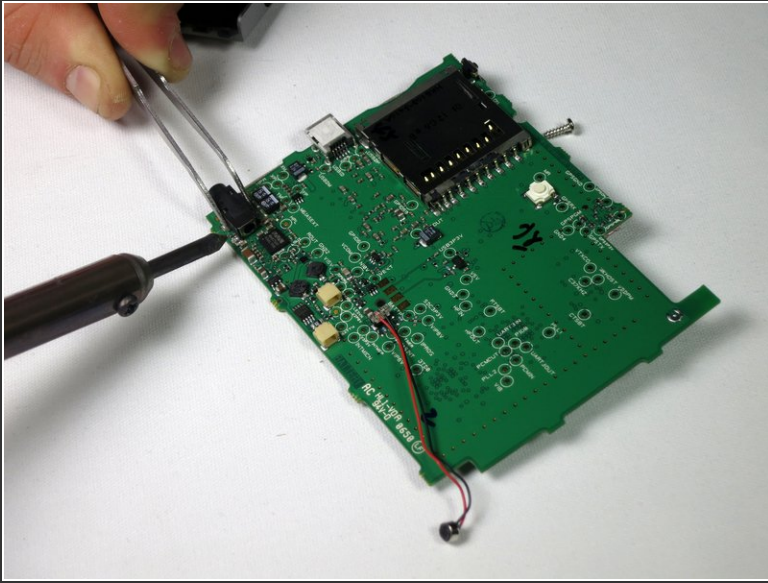
- The motherboard will now freely separate from the back casing; lay it flat next to the housing.

Step 4



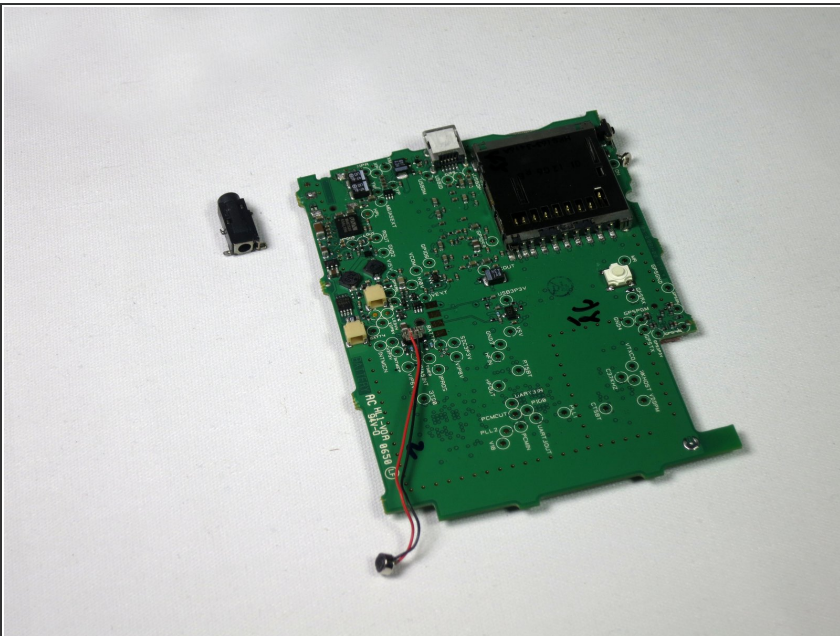
- Disconnect the speaker and battery from their terminals on the motherboard. This should disconnect the motherboard completely from the back panel.
- ☑ If necessary, use tweezers or the spudger for precision.

Step 5



- De-solder the audio out port. Use a soldering iron to melt the solder on each of the leads of the port and a solder extraction tool (not shown), such as a solder sucker or copper braid.
- ☑ Use tweezers to grab the port for greater protection and precision.

Step 6



- The audio out port should now be completely separated from all other components.
- Solder new, functional audio port. Make sure all solder connections are clean.

To reassemble your device, follow these instructions in reverse order.