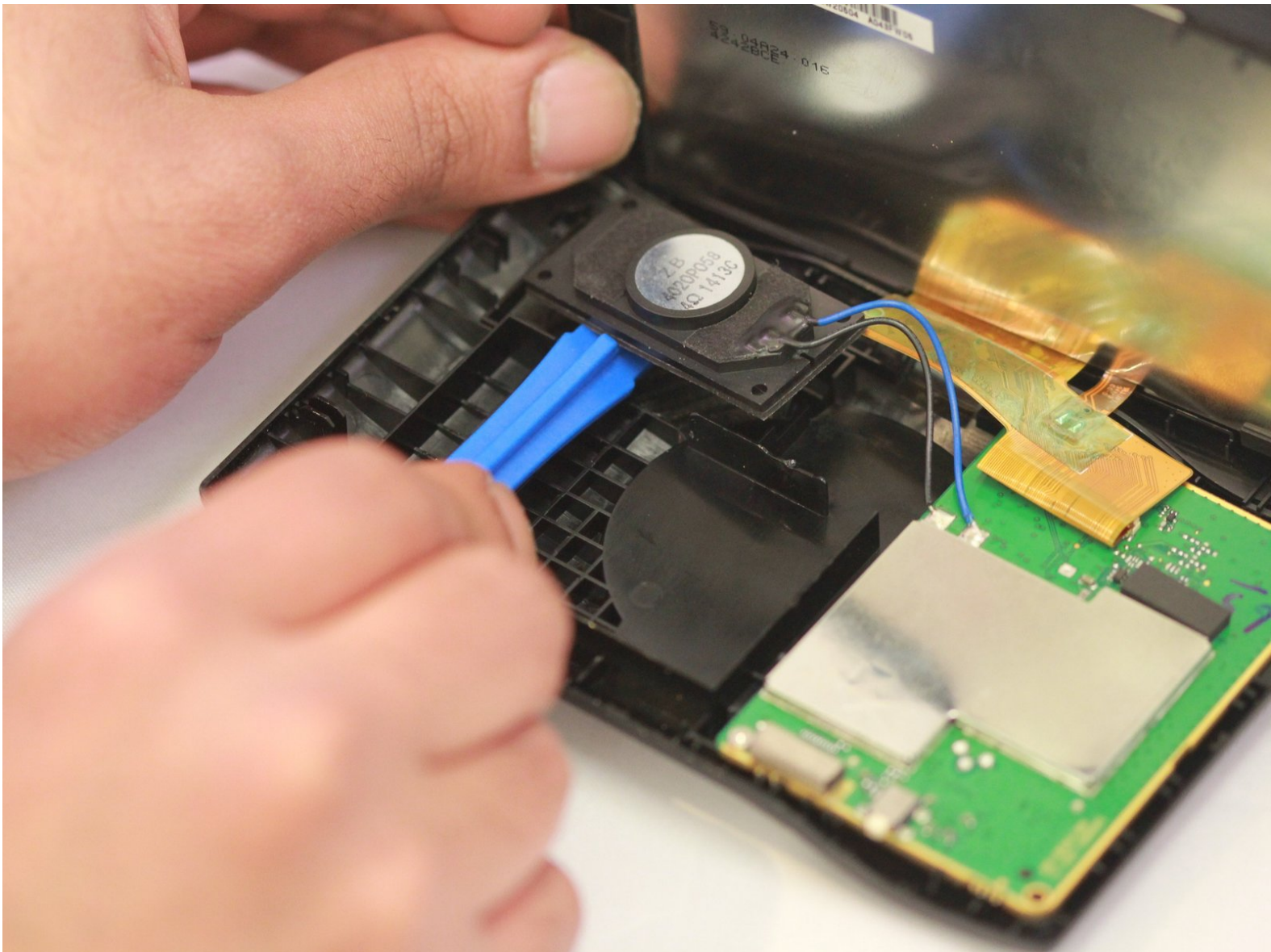




# Garmin Nuvi 42LM Speaker Replacement

This guide will instruct you on how to replace your speaker on the Garmin Nuvi 42LM.

Written By: Elina Zhukov



---

## INTRODUCTION

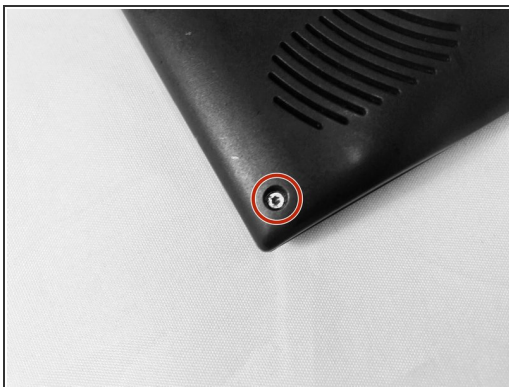
Before replacing the speaker, visit this device's Troubleshooting Page to determine whether you need to replace the speaker. Follow the steps in this guide if you need to replace the speaker.

---

### TOOLS:

- [T5 Torx Screwdriver](#) (1)
  - [iFixit Opening Tools](#) (1)
  - [Portable Soldering Iron](#) (1)
-

## Step 1 — Back Cover



- Remove the four screws on the back of the GPS using the T5 Torx screwdriver.

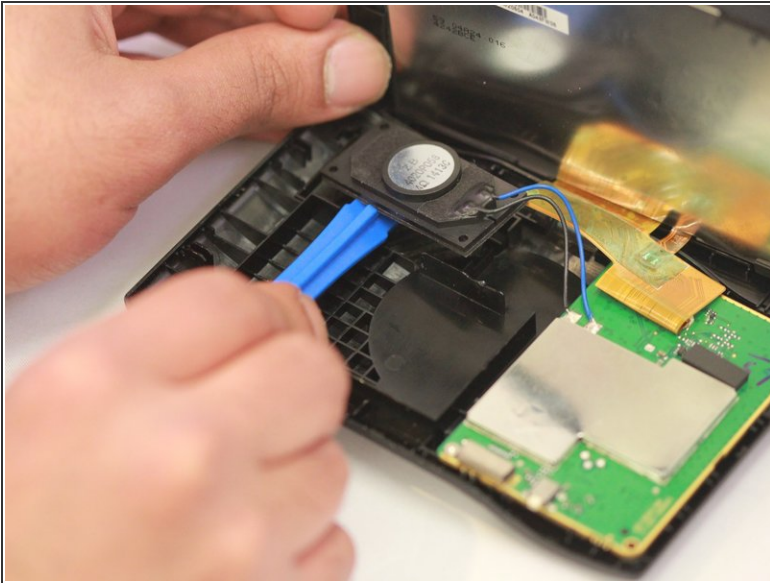
## Step 2



- Pry the GPS open using a plastic opening tool.
- ⓘ When prying open the device, use caution to avoid damaging the motherboard.



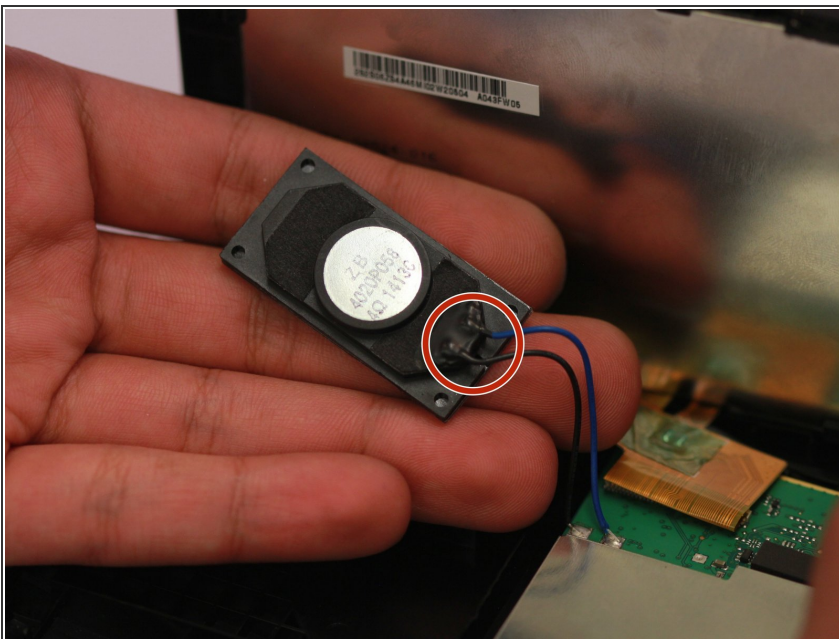
## Step 3 — Speaker



- Use the plastic opening tool to pry the speaker away from the device.

⚠ Be gentle, the speakers are connected to the motherboard by blue and black wire.

## Step 4



- Using a soldering iron, desolder the black and blue wires connected to the speaker.
- ⓘ Check out this awesome guide on [how to solder and desolder connections](#).

To reassemble your device, follow these instructions in reverse order.