



Garmin Nuvi 50LM Speaker Replacement

If the speaker is defective, consider this guide to replace the speaker system

Written By: Maurice Thomas



INTRODUCTION

This guide instructs how to replace a faulty speaker.



TOOLS:

- [iFixit Opening Tools](#) (1)
 - [T4 Torx Screwdriver](#) (1)
 - [Soldering Iron](#) (1)
-

Step 1 — Speaker Replacement



- Place the LCD screen is face down on a flat surface.
- Make sure the side containing the speaker and the charging port is facing up.

Step 2



- Remove the four 9 mm screws on the back of the GPS unit using the Torx T-4 screwdriver found in the iFixit Pro Tech Tool Kit.

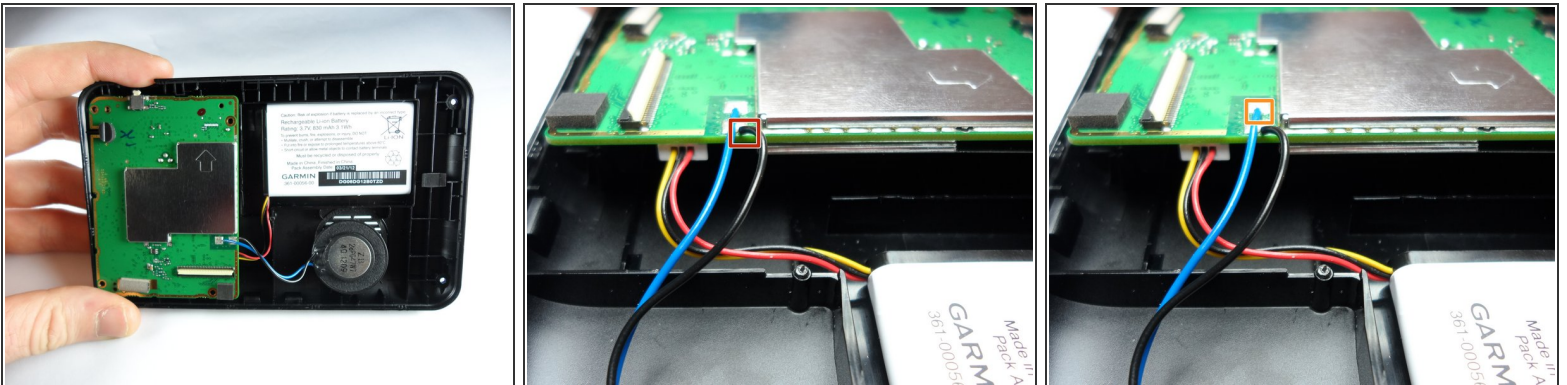
Step 3



- Gently pry open the device with the iFixit Plastic Opening Tool found in the iFixit Pro Tech Tool Kit.

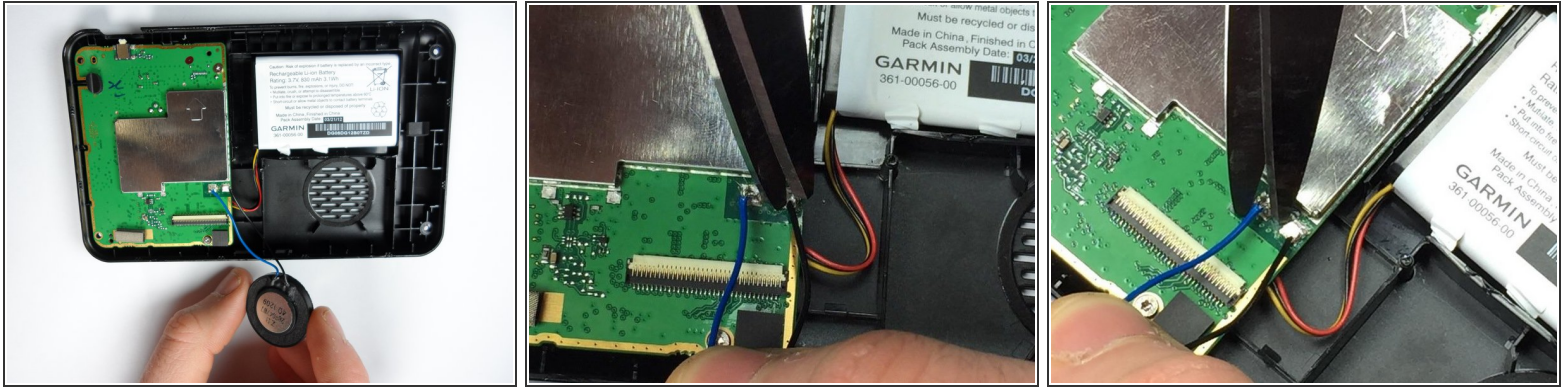
i Be careful not to damage the orange ribbon cable and the motherboard.

Step 4



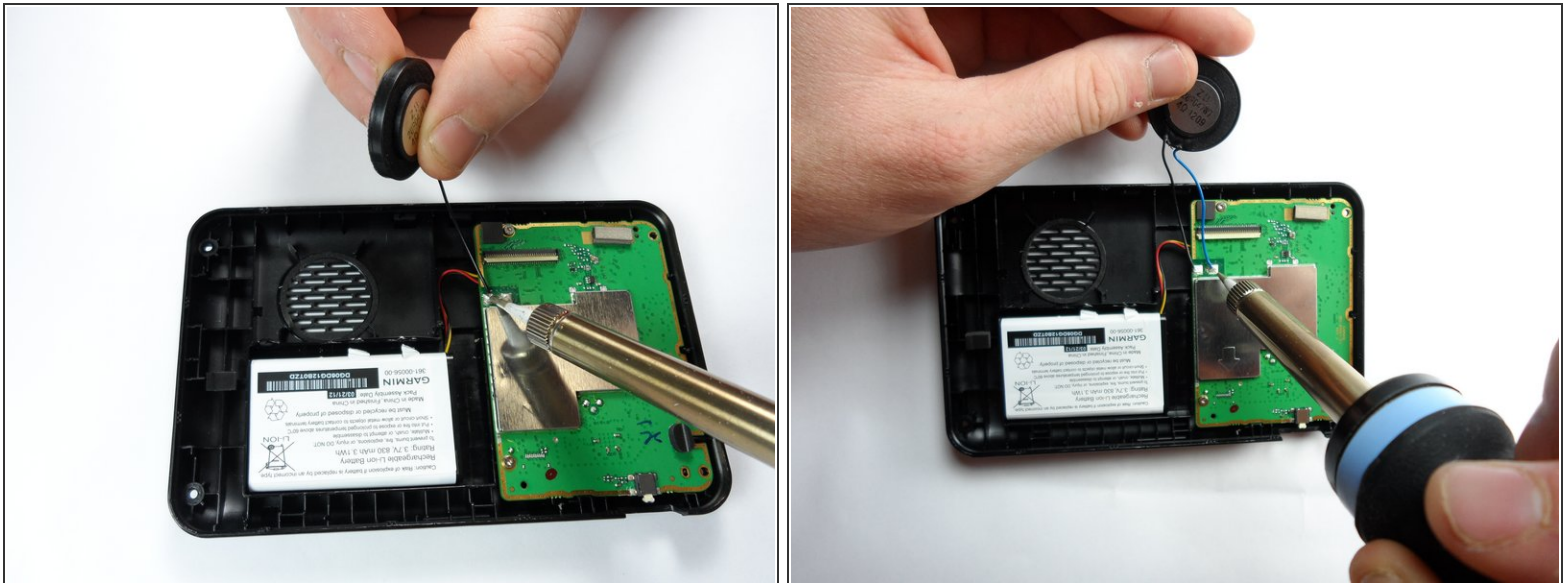
- Once the GPS is open, identify the black and blue wires connecting the black speaker to the green motherboard.
- The black wire is located closest to the speaker.
- The blue wire is located farthest from the speaker.

Step 5



- Cut both wires using a pair of wire cutters.

Step 6



- Solder the wires of the replacement speaker back onto the small silver squares located on the motherboard using the iFixit Soldering Station.

⚠ Be careful when using the soldering iron, the temperature can reach 600F.

- ⓘ Solder the black wire onto the motherboard on the port closest to the speaker and solder the blue wire onto the motherboard on the port farthest from the speaker.

To reassemble your device, follow these instructions in reverse order.