



Garmin Nuvi 65LM Casing Disassembly

This guide will show you how to separate the front and back casing panels, granting you access to the internal components.

Written By: Alex King



INTRODUCTION

Prerequisite only.



TOOLS:

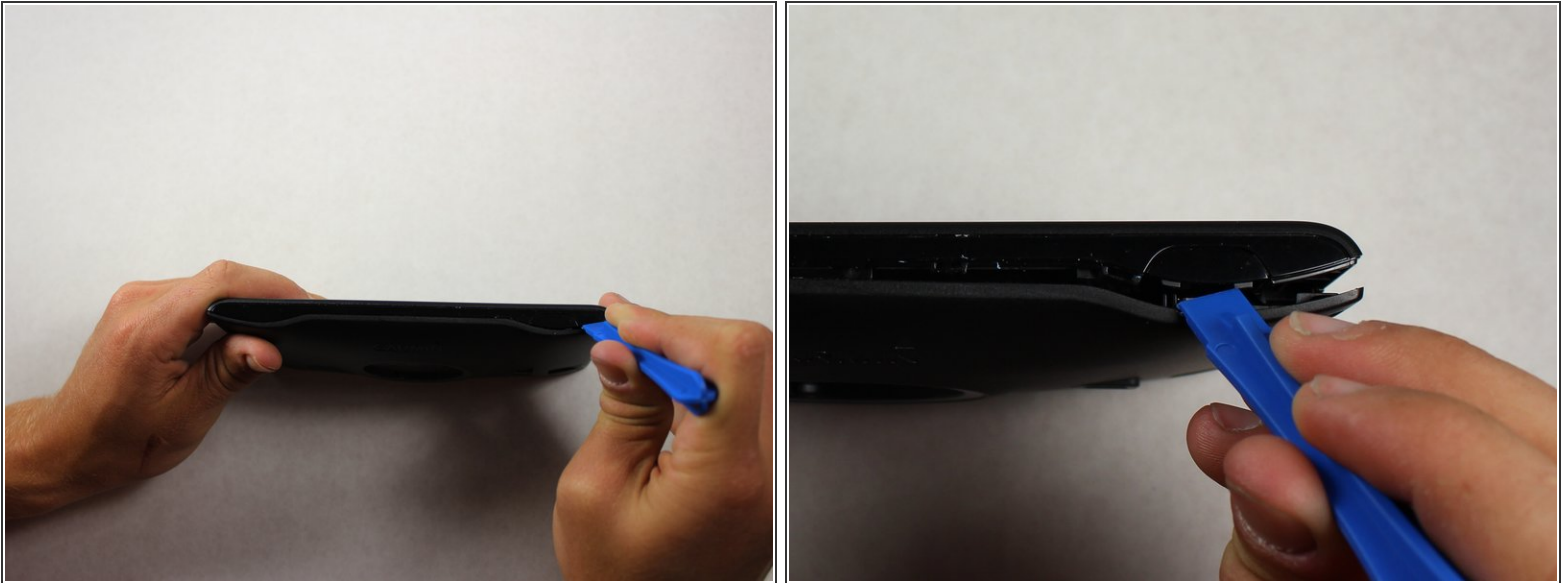
- [T5 Torx Screwdriver](#) (1)
 - [iFixit Opening Tools](#) (1)
 - [Spudger](#) (1)
-


Step 1 — Plastic device casing



- Place the device on a flat surface with the screen facing down.
- Remove the four 4.80 mm T5 screws on the corners of the device with a T5 Torx screwdriver.

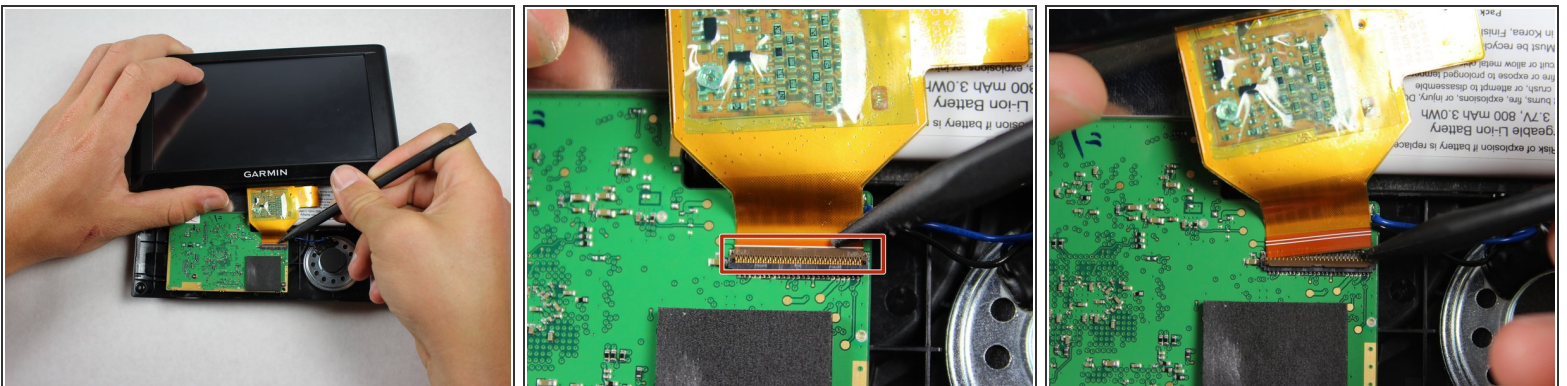
Step 2



 There is a ribbon cable that will still connect the front and back panels once they are pried part.

- Use the plastic opening tool to gently pry apart the front and back casing panels. Repeat this at multiple locations around the edge of the device. You should hear the clips that hold the front and back together pop apart.
- Once there is a large gap between the from and back casing panels, use your hands to separate the two halves.

Step 3



- Use a spudger to pop up the ZIF connector tab that fastens the ribbon cable to the motherboard.
- Gently pull the front panel away and set it on your flat work surface.

This document was generated on 2019-09-26 03:27:26 PM (MST).

To reassemble your device, follow these instructions in reverse order.