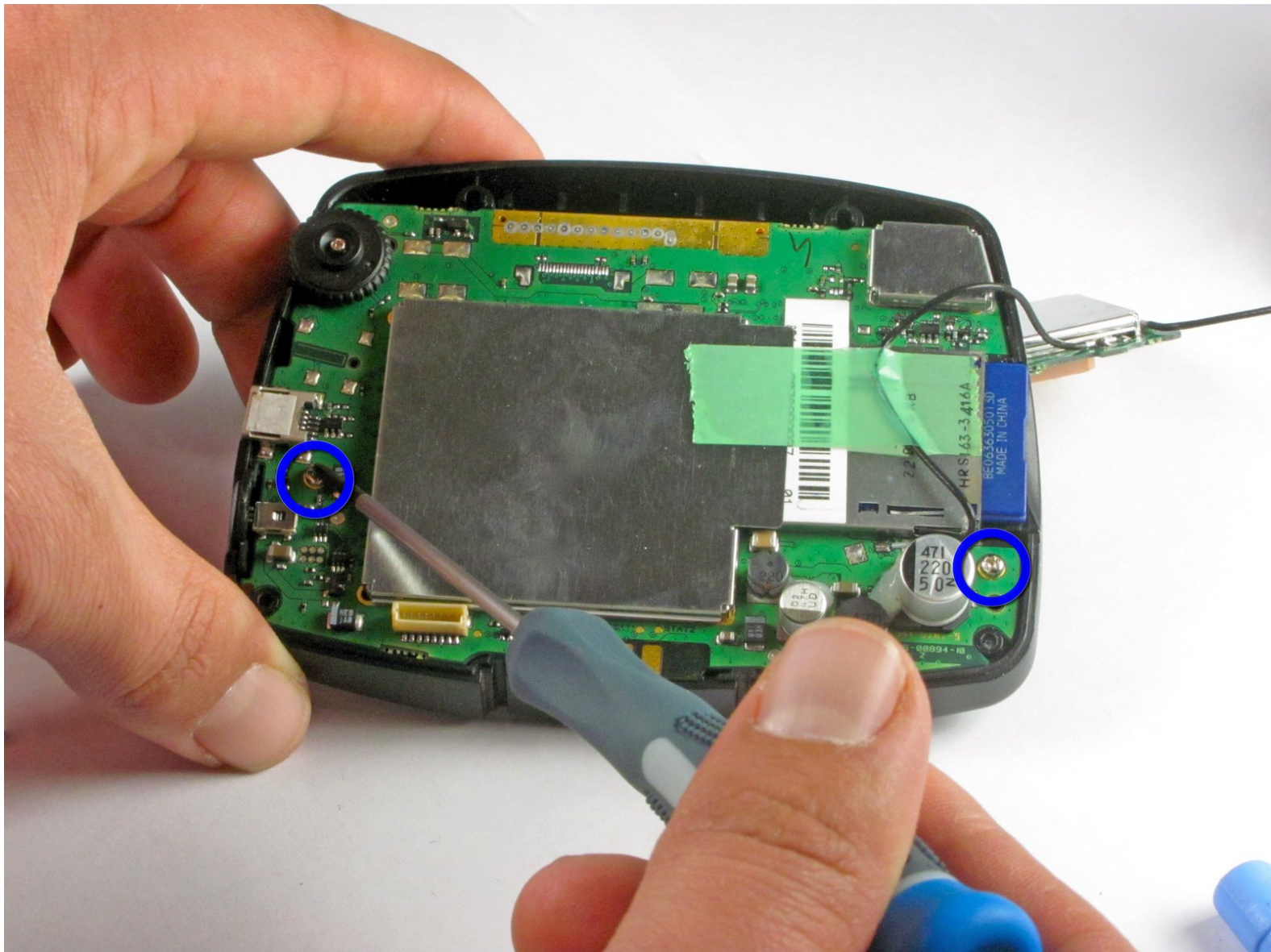




Garmin StreetPilot c320 LCD Screen Replacement

Replace the LCD in your Garmin StreetPilot c320.

Written By: Arturo Barajas



INTRODUCTION

For this guide you will be opening the device, but it is fairly simple. Before you begin disassembling the device, be sure the power is off.




TOOLS:

- [Phillips #00 Screwdriver](#) (1)
 - [iFixit Opening Tools](#) (1)
-

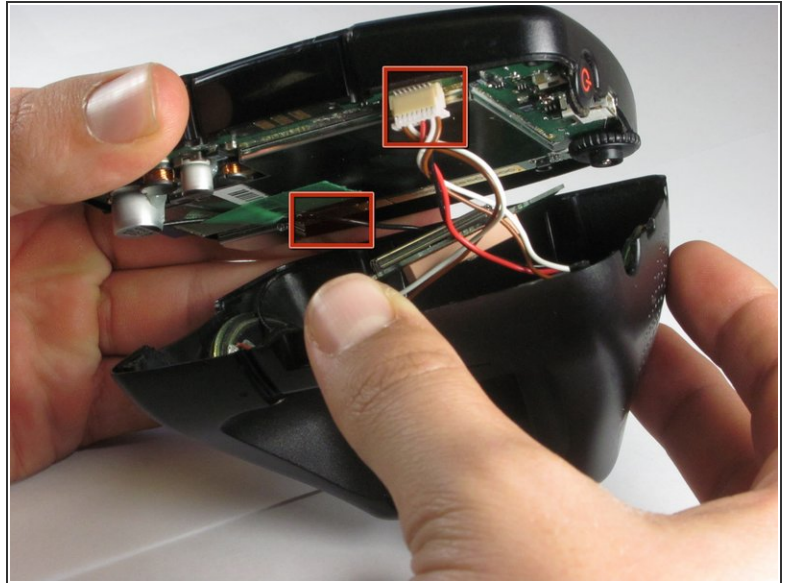
Step 1 — Rear Case Assembly



- Wedge a plastic opening tool in between the outer frame and the rear panel assembly.
- Pry the outer frame off the perimeter of the rear panel assembly.

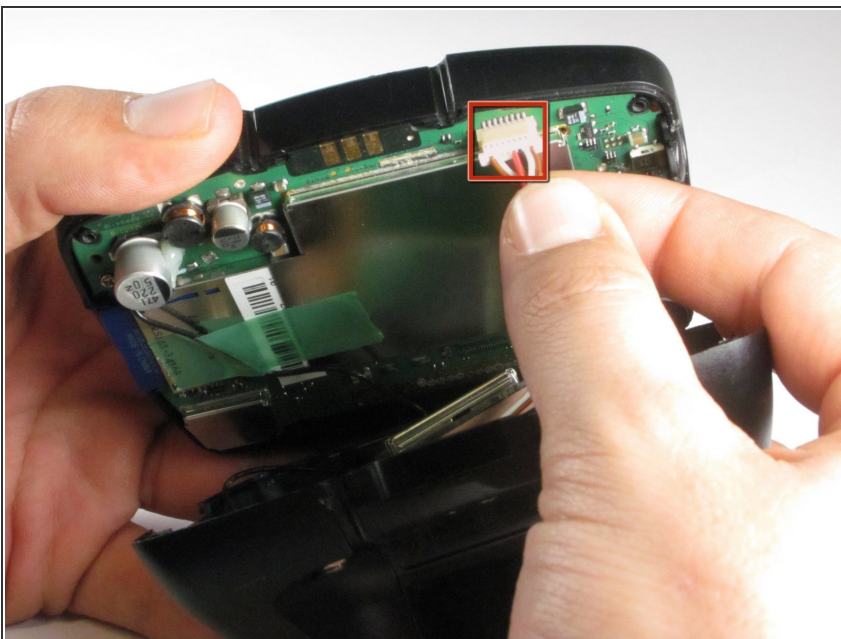
 The cover will easily pop off.

Step 2



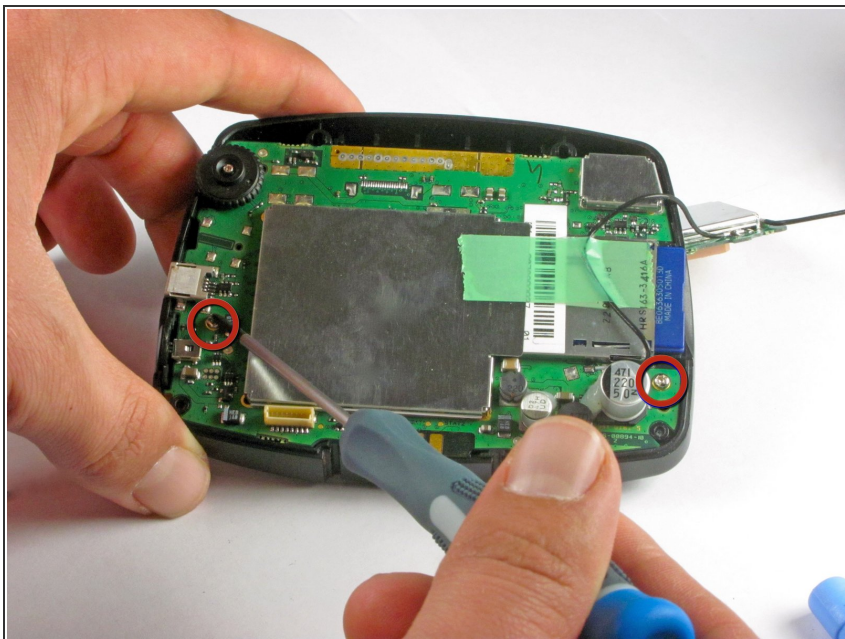
- Remove the four #00 Phillips screws securing the front case assembly to the rear case assembly.
 - Carefully lift, but do not completely separate, the front case assembly from the rear case assembly.
- ⚠ Be extremely cautious when separating both halves, as the rear case assembly is still attached to the front case assembly via a few connectors.

Step 3



- Gently pull the battery cable connector from its socket on the motherboard.
- The second connector can remain attached to the motherboard, but be careful not to break the connector while handling both halves of the device.

Step 4 — LCD Screen



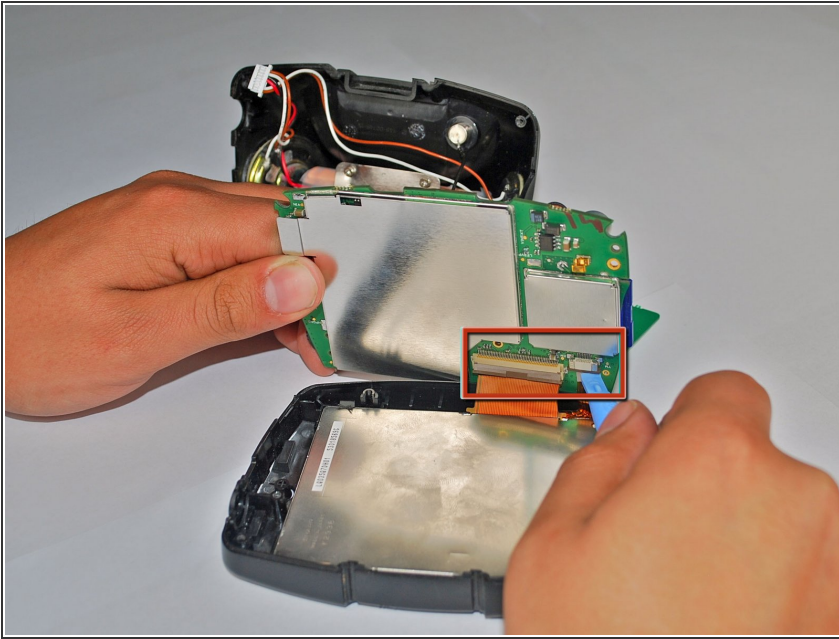
- Remove the two Phillips #00 screws securing the motherboard to the front case assembly.

Step 5



- Slightly lift the motherboard upwards to reveal the LCD assembly.
- ⚠ Do **not** remove the motherboard yet, as it is still attached to the LCD.

Step 6



- Use the edge of a plastic opening tool to flip up the retaining flap on the LCD ribbon cable ZIF socket (highlighted in red, located on the left side.)
- ⚠ Be sure you are prying up on the hinged retaining flap, **not** the socket itself.
- Use the plastic opening tool to pull the LCD ribbon cable out of its socket.
- Disconnect the right connector using the edge of a plastic opening tool.

To reassemble your device, follow these instructions in reverse order.