



# Garmin etrex Vista Cx Charging Port Replacement

How to replace the charging port on the Garmin etrex Vista Cx.

Written By: Evan Borgman



---

# INTRODUCTION

This guide illustrates how to remove and replace the charging port for this device.

---



## TOOLS:

- [Metal Spudger](#) (1)
  - [iFixit Opening Tools](#) (1)
  - [T4 Torx Screwdriver](#) (1)
-

## Step 1 — Charging Port



- Remove the rubber grip that goes around the side of the device.

## Step 2



- Underneath the rubber grip will also be a piece of tape over the plastic seam. You will need to take the metal spudger and break the tape along the seam.

## Step 3



- Next you will have to use the plastic opening tool and pry at the bottom of the GPS. This will separate the front and the back of the device.

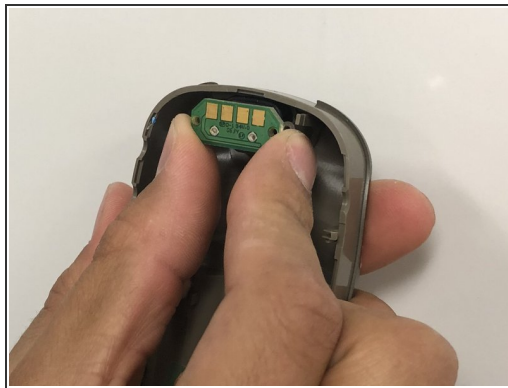


## Step 4



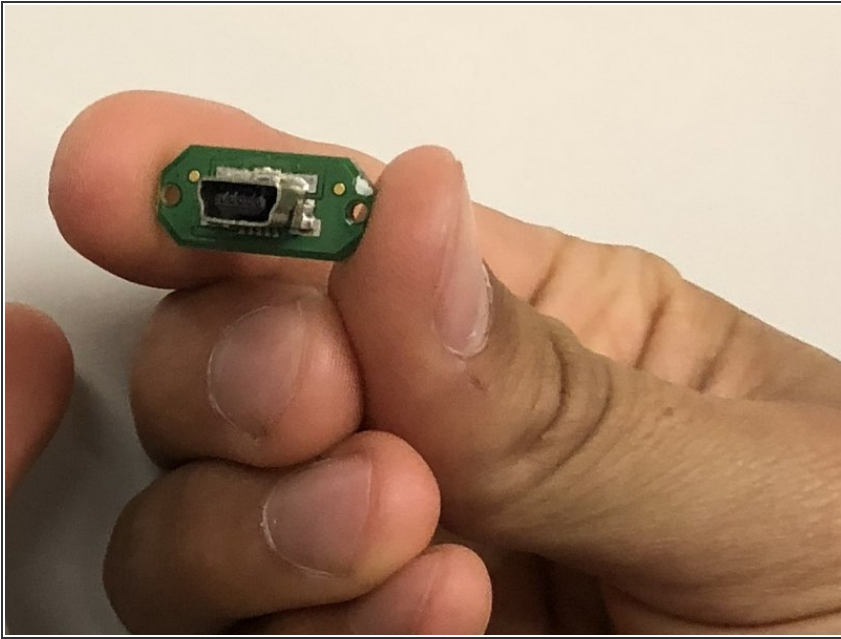
- After the front and back are separated, there will be a small ribbon cable holding them together. You will need to pull straight back on the cable with fingers. This cable will pull straight out.

## Step 5



- When looking at the charging port you will notice there are two screws. To remove these, you will need a T4 bit in a nut driver. After you locate these screws you will need to remove them. The screws are 5 mm long.
- After the screws are removed, the charging port will lift out of the plastic case.

## Step 6



**i** In order to replace the charging port you have to purchase a new one.

To reassemble your device, follow these instructions in reverse order.