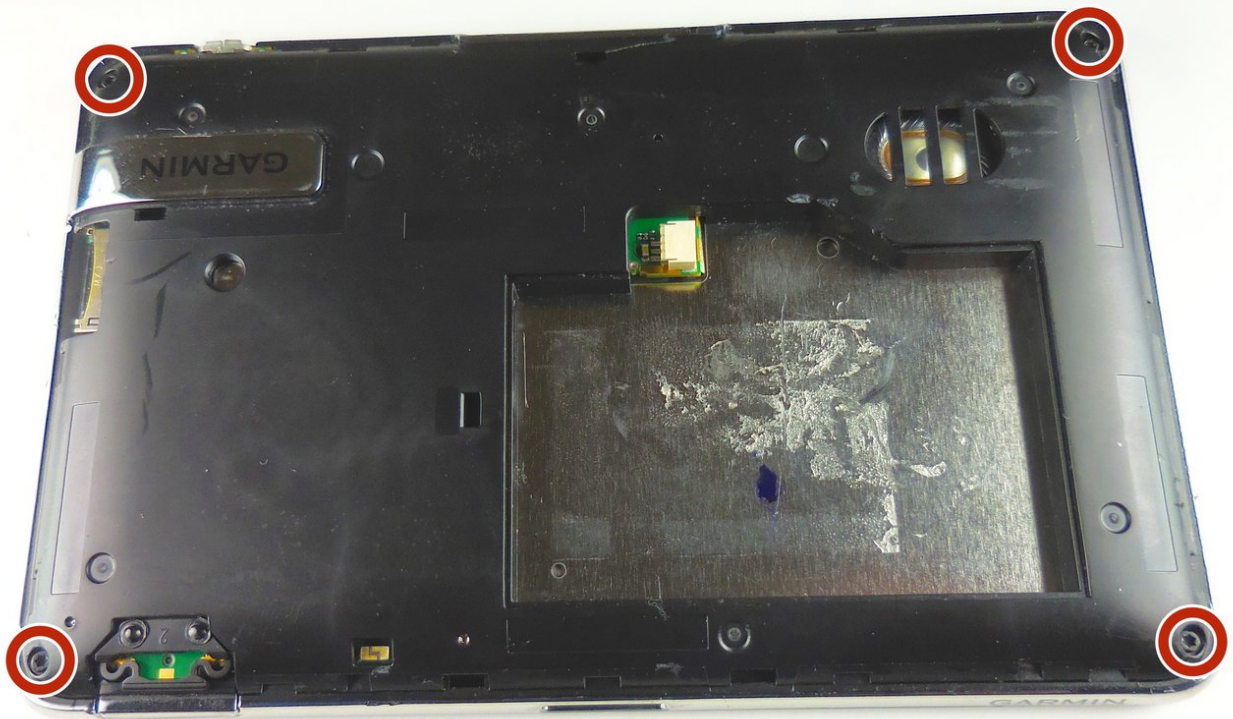




# Garmin nüvi 3590 LMT Light Sensor Replacement

A detailed guide on replacing the light sensor in your Garmin nüvi 3590 LMT.

Written By: David



---

## INTRODUCTION

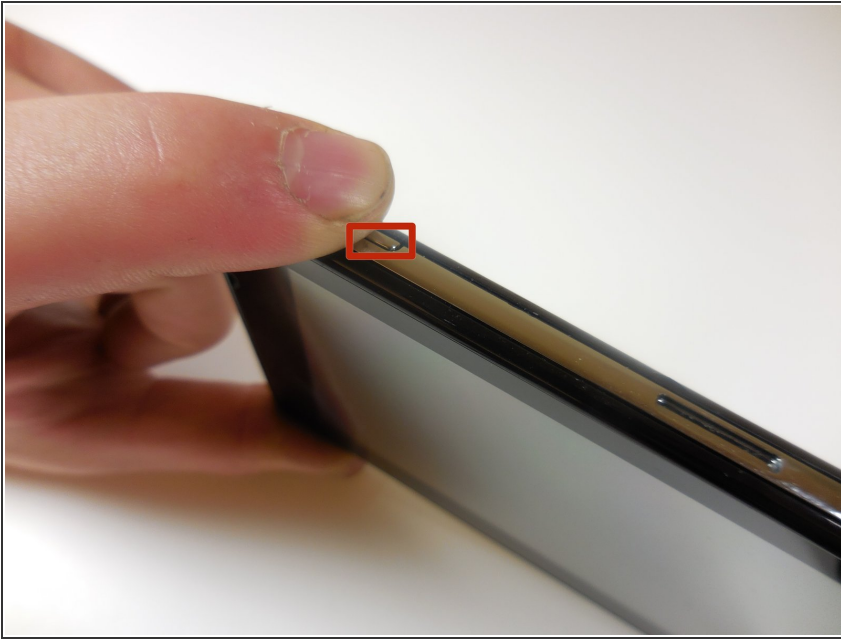
Remove that battery to avoid electrocution. The light sensor is delicate, so be cautious when removing it.



### TOOLS:

- [Metal Spudger](#) (1)
  - [iFixit Opening Tools](#) (1)
  - [Spudger](#) (1)
-

## Step 1 — Battery



- Turn the device off by pressing and holding the power button on the top left of the device.

## Step 2



- Use the plastic opening tool to separate the tabs on the black back cover of the device by leveraging the tool against the frame around the perimeter of the device.

## Step 3



- Once all of the tabs are popped out, take the back cover off.
- ⓘ The back cover is a separate piece from the device.

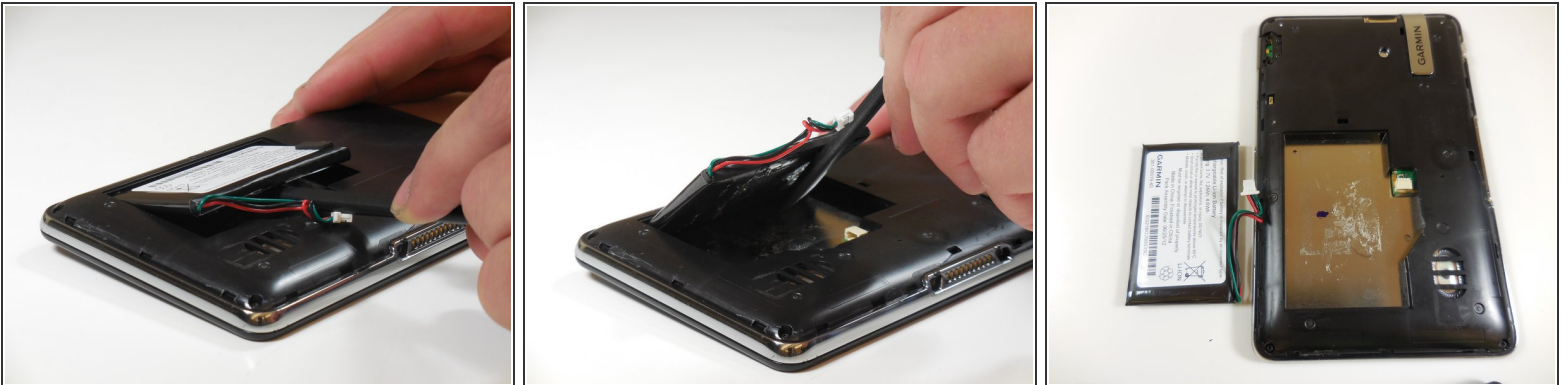


## Step 4




- Using the plastic spudger, carefully remove the white tab connected to the battery from the device by pulling the tab in the opposite direction from which it is connected.

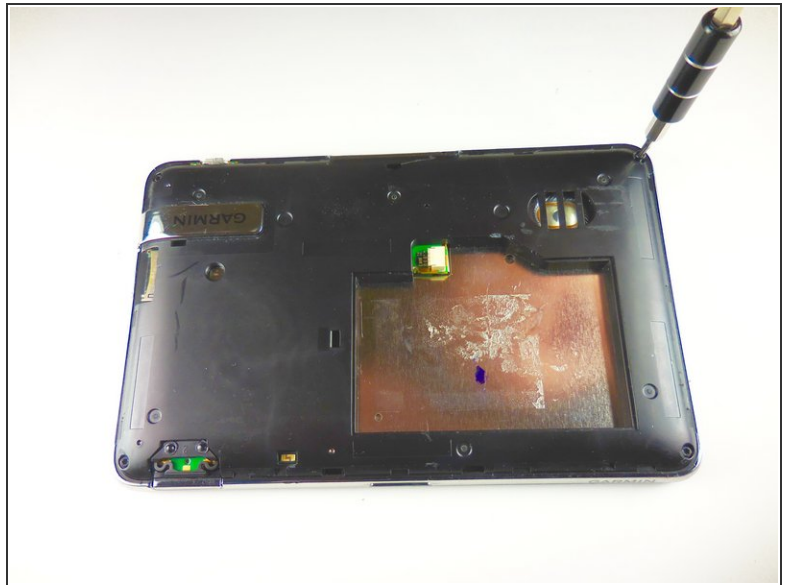
## Step 5



- Use the plastic spudger to lift the battery up and away from the device.

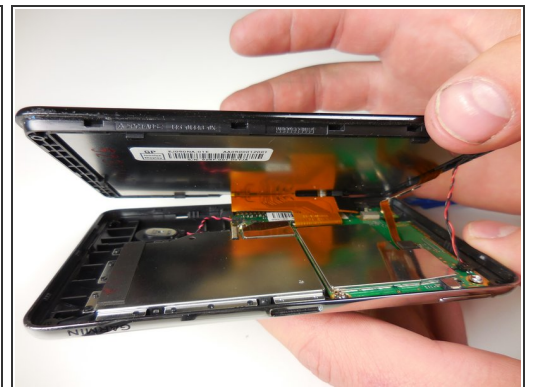
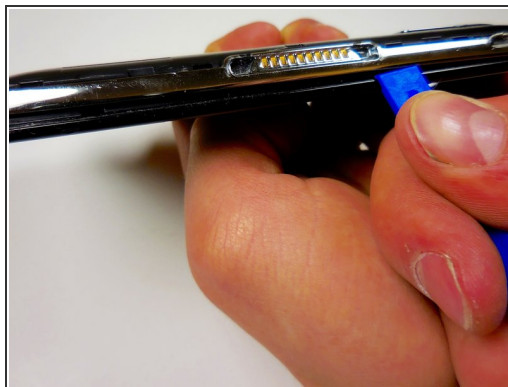
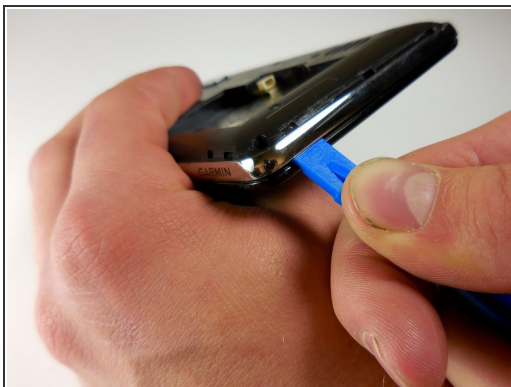
 Do not puncture or bend the battery. Serious health complications could occur.

## Step 6 — Light Sensor



- Using the T5 bit, unscrew the four 5.7mm screws in the four corners of the device.

## Step 7



- Leverage the plastic opening tool to pop the tabs between the black screen and the metal frame around the perimeter of the device.
- ⓘ Do not forcibly separate the two pieces after the tabs have been popped as there are connections between the two pieces that could be torn.

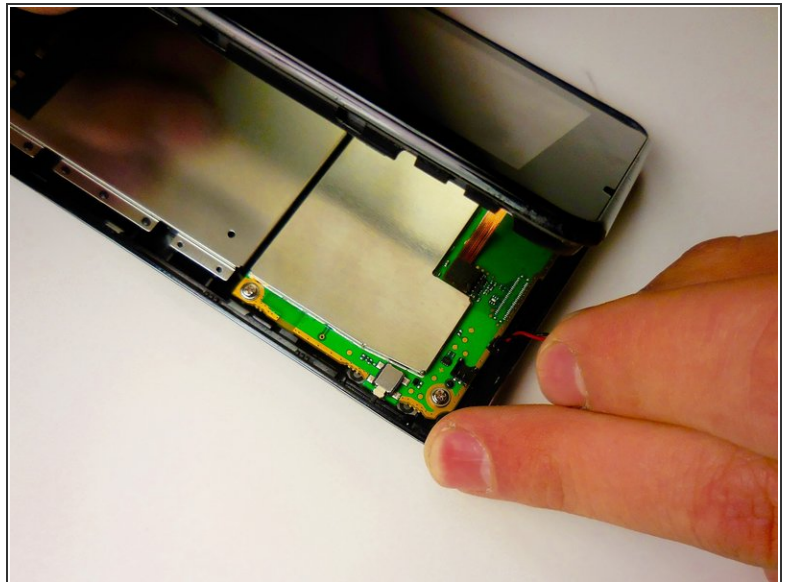
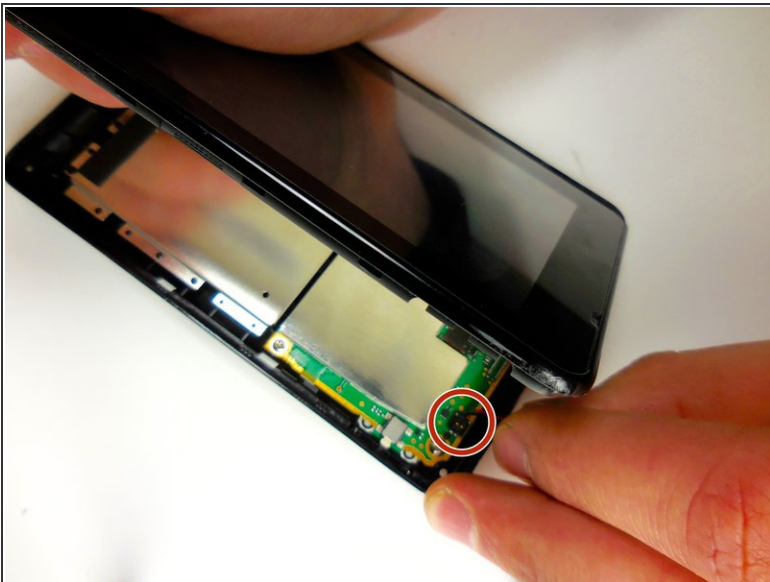


## Step 8



- Using your fingers, pull the red and black wire from the back of the screen.

## Step 9



- Locate the red and black wire connected to the circuit board with the round, black, rubbery disc that was connected to the other half of the device (that disc is the light sensor). Gently pull the wire up from the circuit board.

To reassemble your device, follow these instructions in reverse order.