



Garmin nuvi 2460 LMT Back Cover Replacement

This guide will help you remove the back cover of this device

Written By: Ricardo Audain



INTRODUCTION

In order to access the internals of this device, you will first need to be able remove the back cover. It is a quick and simple process.



TOOLS:

- [Tweezers](#) (1)
 - [iFixit Opening Tools](#) (1)
 - [T5 Torx Screwdriver](#) (1)
-

Step 1 — Back Cover



- Locate the four screws in the four corners of the back panel.

Step 2



- Using a T5 Torx Screwdriver, begin unscrewing the four 11.0 mm screws from the back panel.

Step 3



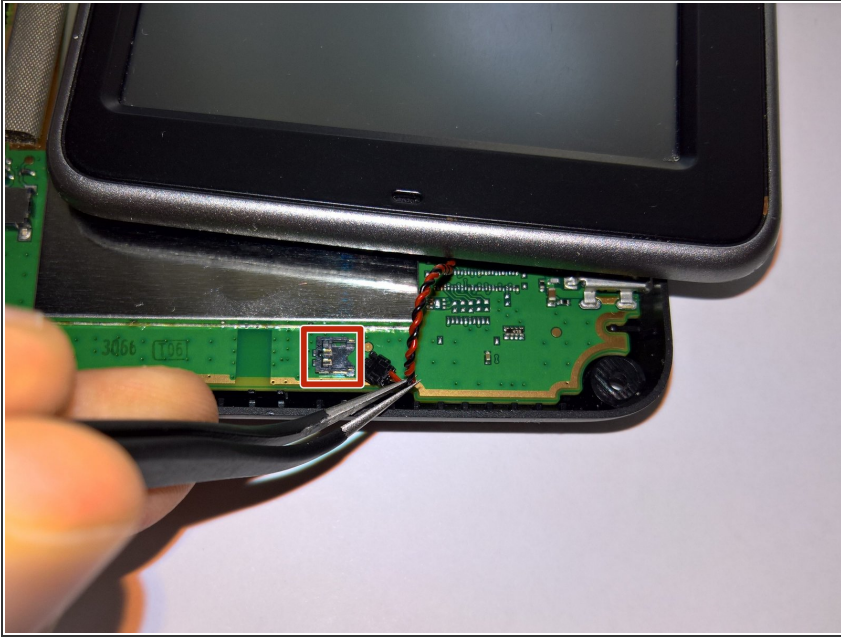
- Using a plastic opening tool or similar object, find the groove in the side of the device and begin prying open the back panel. Work the tool around the entire panel until it pops off.

Step 4



- Lift the beige clamp using a tweezer or your fingernail and remove the connector.

Step 5



- Lift the connector gently from the socket, making sure you pull in the right direction.

To reassemble your device, follow these instructions in reverse order.