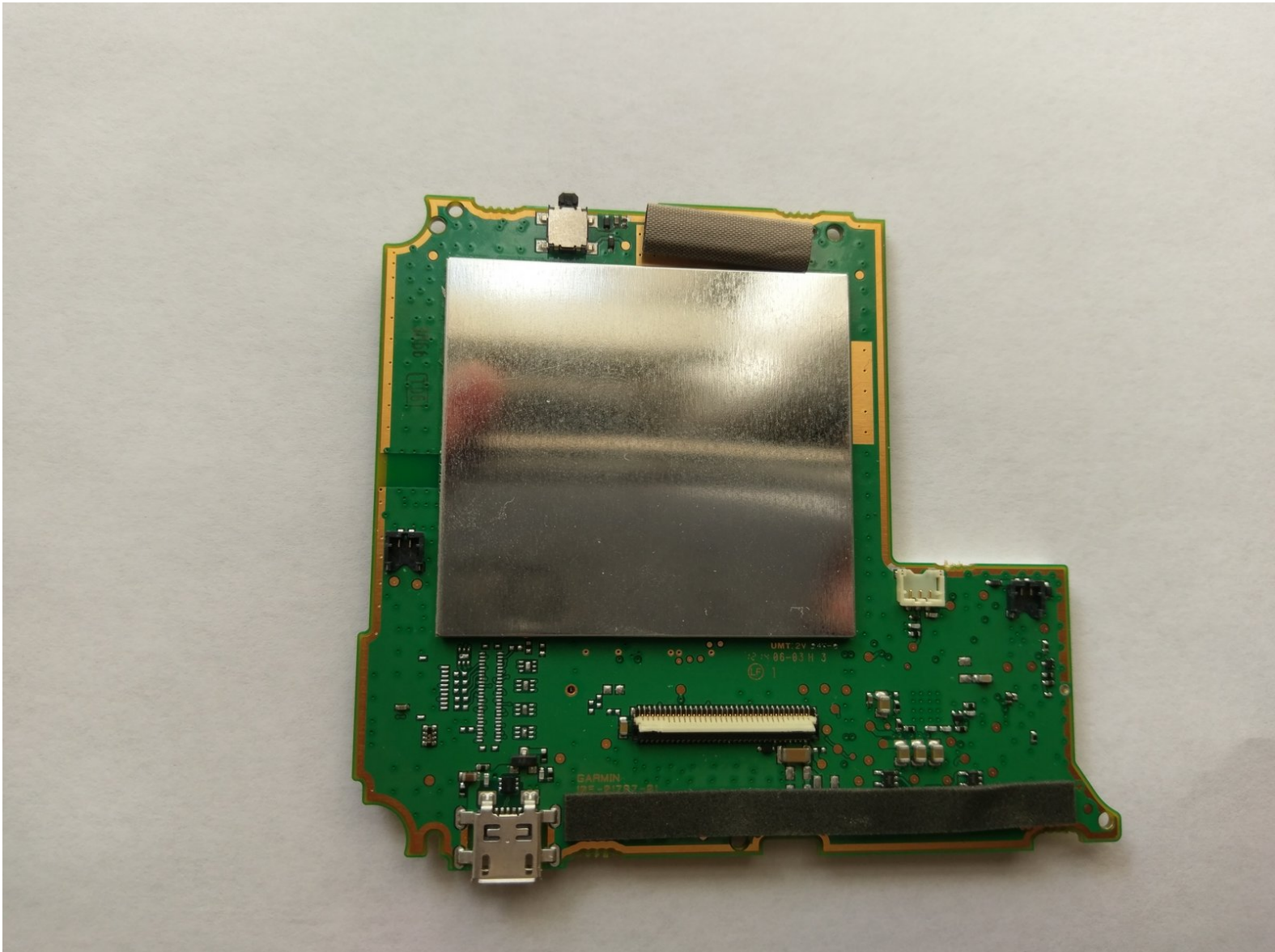




Garmin nuvi 2460 LMT Motherboard Replacement

This guide will help you replace the motherboard on your device.

Written By: Ricardo Audain





TOOLS:

- [T10 Torx Screwdriver](#) (1)
- [Tweezers](#) (1)
- [iFixit Opening Tools](#) (1)
- [T5 Torx Screwdriver](#) (1)

Step 1 — Back Cover



- Locate the four screws in the four corners of the back panel.

Step 2



- Using a T5 Torx Screwdriver, begin unscrewing the four 11.0 mm screws from the back panel.

Step 3



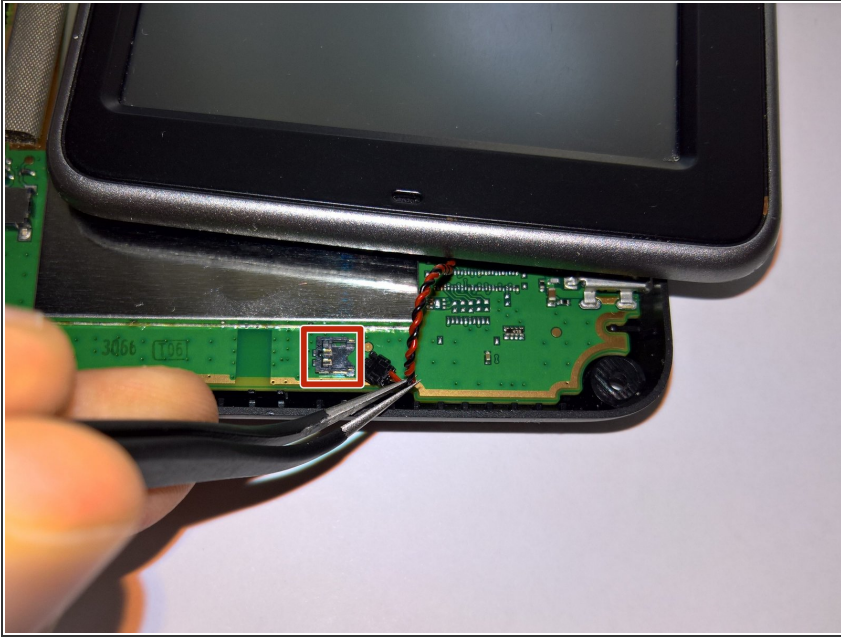
- Using a plastic opening tool or similar object, find the groove in the side of the device and begin prying open the back panel. Work the tool around the entire panel until it pops off.

Step 4



- Lift the beige clamp using a tweezer or your fingernail and remove the connector.

Step 5



- Lift the connector gently from the socket, making sure you pull in the right direction.

Step 6 — Speaker



- Lift and separate the speaker connector cable using a pair of tweezers.

Step 7



- Gently lift the speaker out of the back cover using a plastic opening tool.
- ⓘ Apply force as needed if there is glue holding the speaker in place.

Step 8 — Battery



- Using a pair of tweezers, grab the connecting wires and lift the terminal from the motherboard.
- ⚠ Avoid contacting battery terminals with metallic objects.

Step 9



- Pry the battery out of the back cover using a plastic opening tool.
- ⓘ Work the edges and apply force when removing the battery, as it will be glued down.

Step 10 — Motherboard



- Using a T5 Torx Screwdriver, unscrew the 5 screws holding the motherboard in place.

Step 11



- Tilt and slide the motherboard out of the back cover.

To reassemble your device, follow these instructions in reverse order.