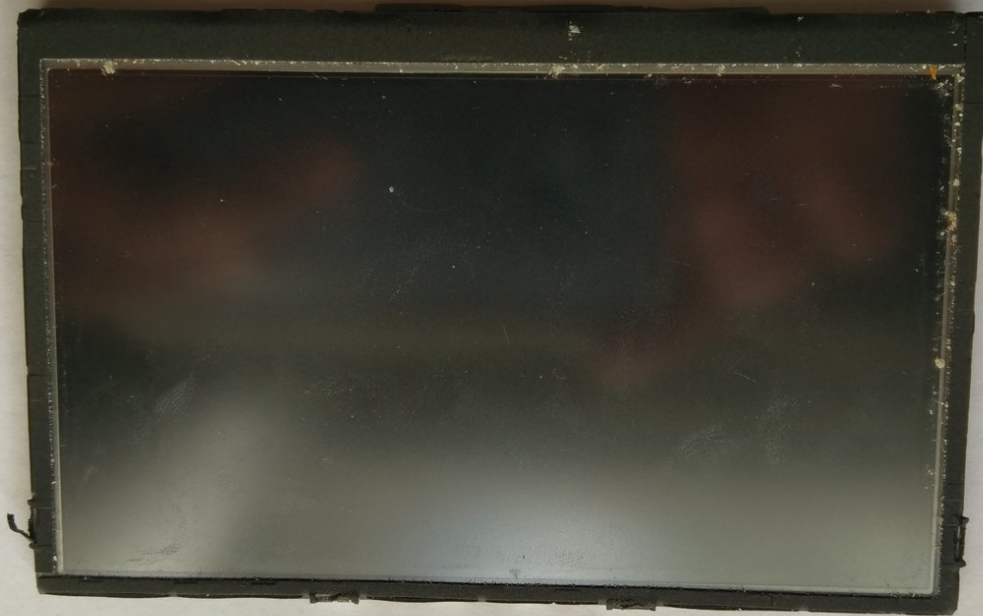




Garmin nuvi 2460 LMT Screen Replacement

This guide will help you replace the touchscreen on your device.

Written By: Ricardo Audain





TOOLS:

- [T10 Torx Screwdriver](#) (1)
- [Tweezers](#) (1)
- [iFixit Opening Tools](#) (1)

Step 1 — Back Cover



- Locate the four screws in the four corners of the back panel.

Step 2



- Using a T5 Torx Screwdriver, begin unscrewing the four 11.0 mm screws from the back panel.

Step 3



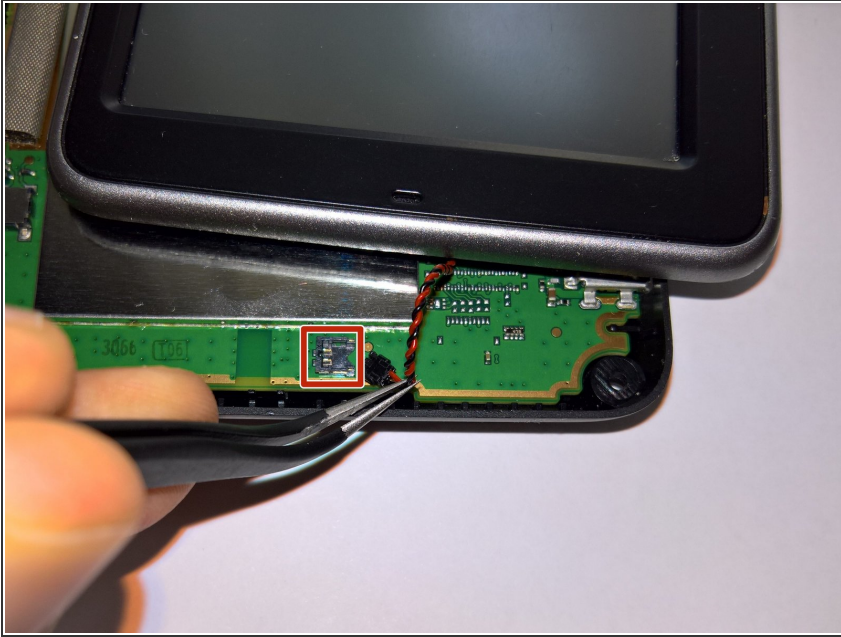
- Using a plastic opening tool or similar object, find the groove in the side of the device and begin prying open the back panel. Work the tool around the entire panel until it pops off.

Step 4



- Lift the beige clamp using a tweezer or your fingernail and remove the connector.

Step 5



- Lift the connector gently from the socket, making sure you pull in the right direction.

Step 6 — Screen



- Pop out the panel along the edges and remove it from the border.

To reassemble your device, follow these instructions in reverse order.