



# Garmin nuviCam LMTHD Dash Camera Replacement

Replacing the camera on your Garmin nuviCam LMTHD.

Written By: Sarah Myers

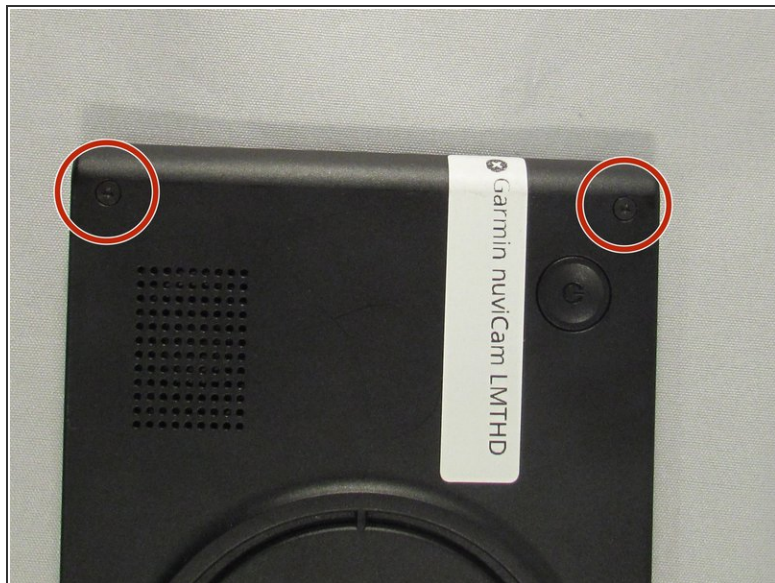




## TOOLS:

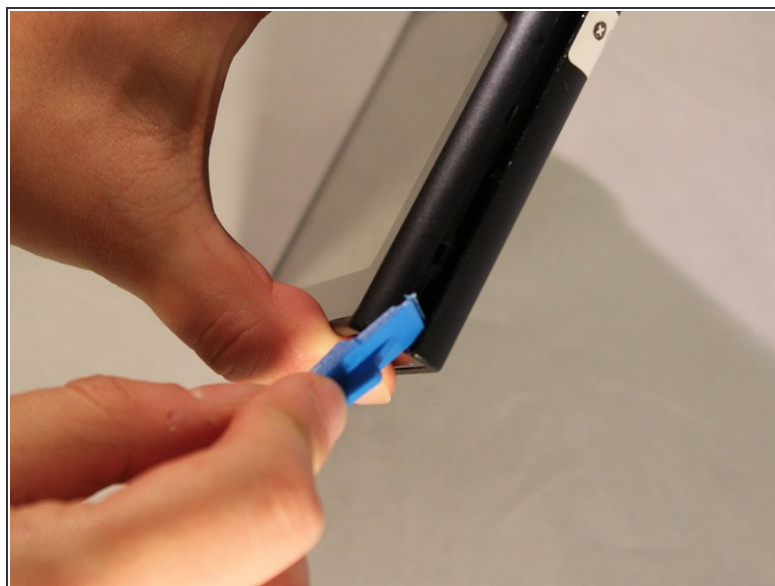
- [T4 Torx Screwdriver](#) (1)
  - [iFixit Opening Tools](#) (1)
-

## Step 1 — Screen



- Remove the four 6.9 mm black screws using the T6 screw bit.

## Step 2



- Pry the device open using a plastic opening tool.
- We suggest starting from the dash camera side for easier opening
- ⓘ You may have to use a little force, the screen is hard to remove.

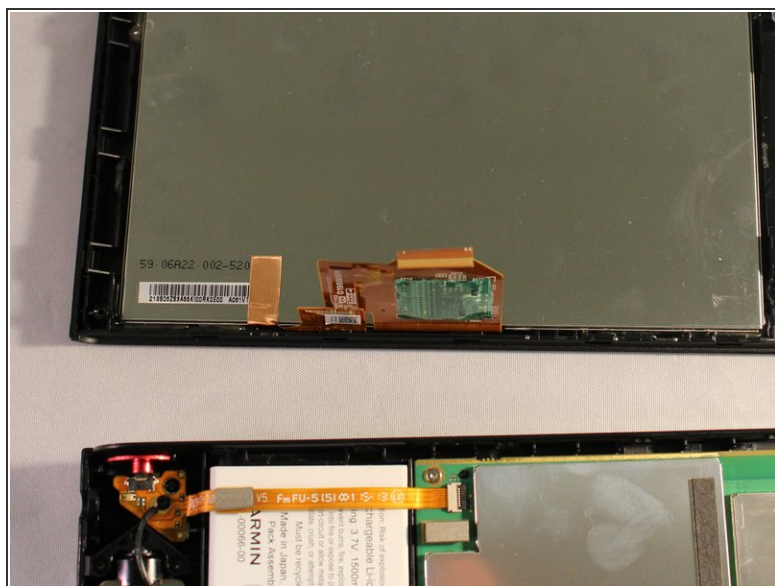
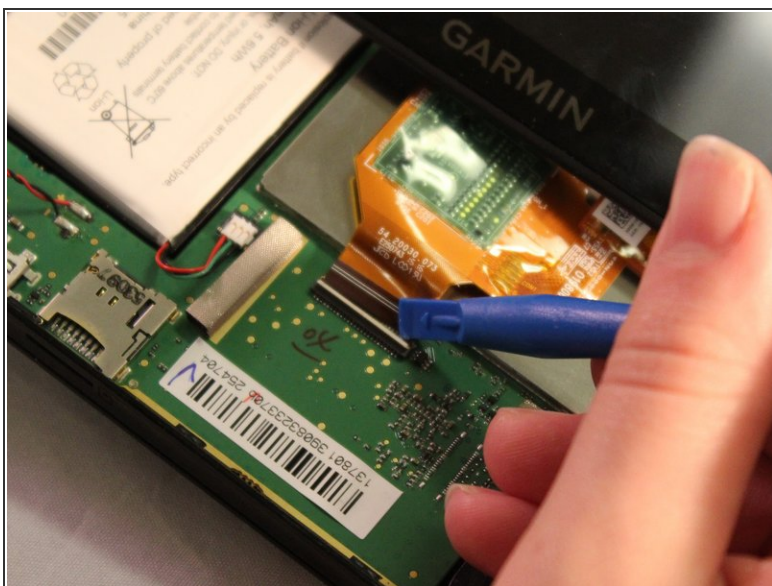


### Step 3



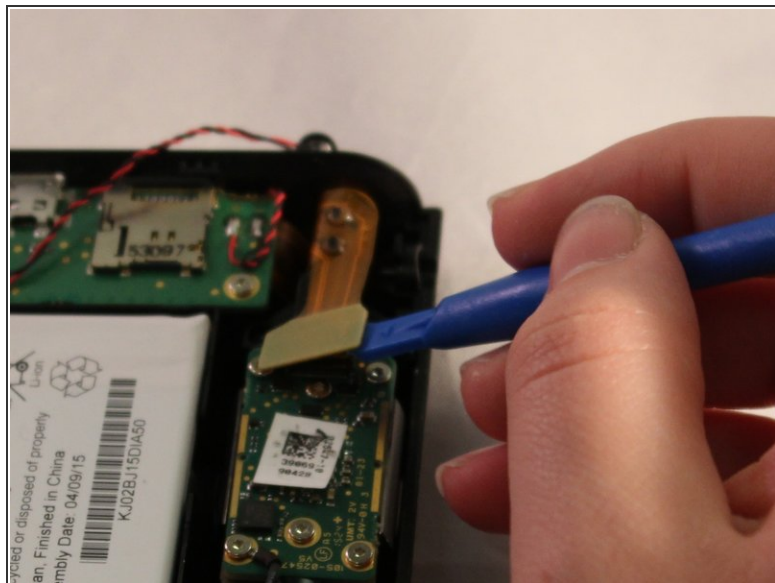
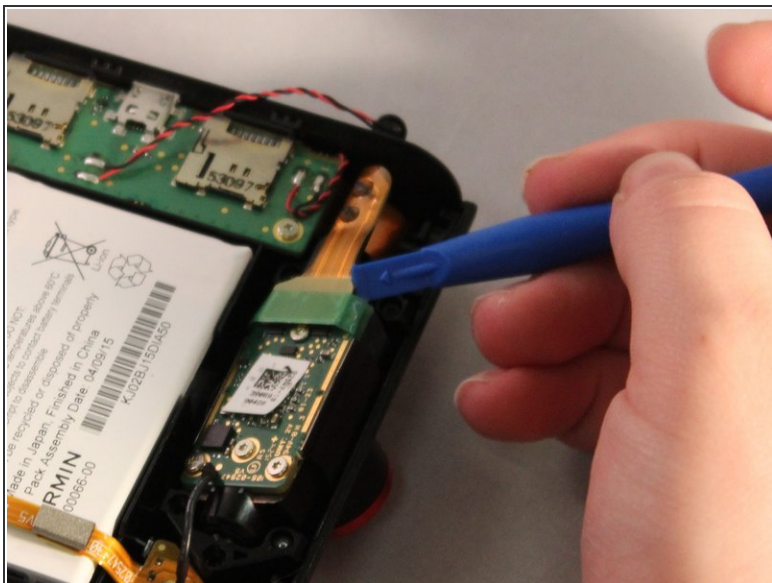
- Disconnect the black and red wire from the screen.

### Step 4



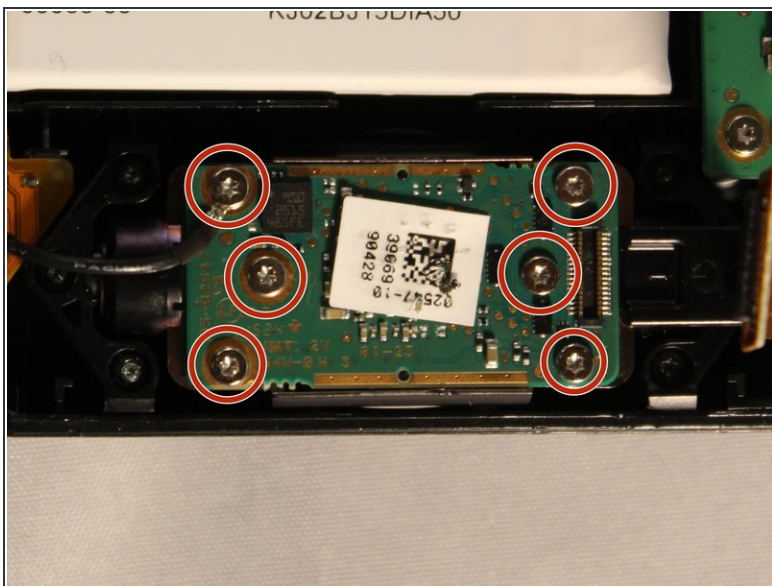
- Disconnect the orange strip by flipping up the connector with a plastic opening tool and sliding the cable out.

## Step 5 — Dash Camera



- Remove green strip of tape over orange strip.
- Disconnect orange strip from device using plastic opening tools.

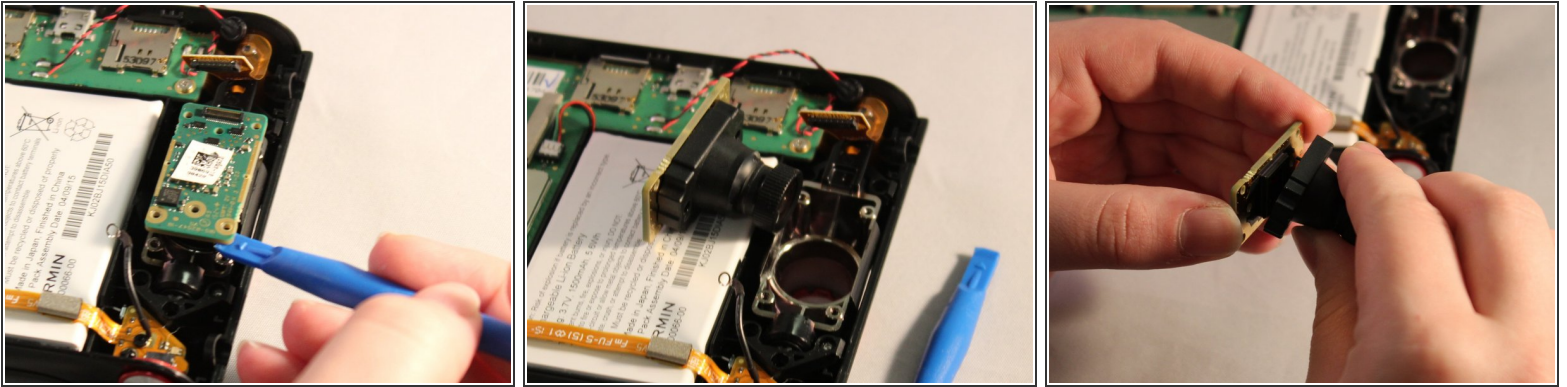
## Step 6



- Unscrew six 5.74mm silver screws using the T4 screw bit.



## Step 7



- Pop out green plate using plastic prying tool.

To reassemble your device, follow these instructions in reverse order.