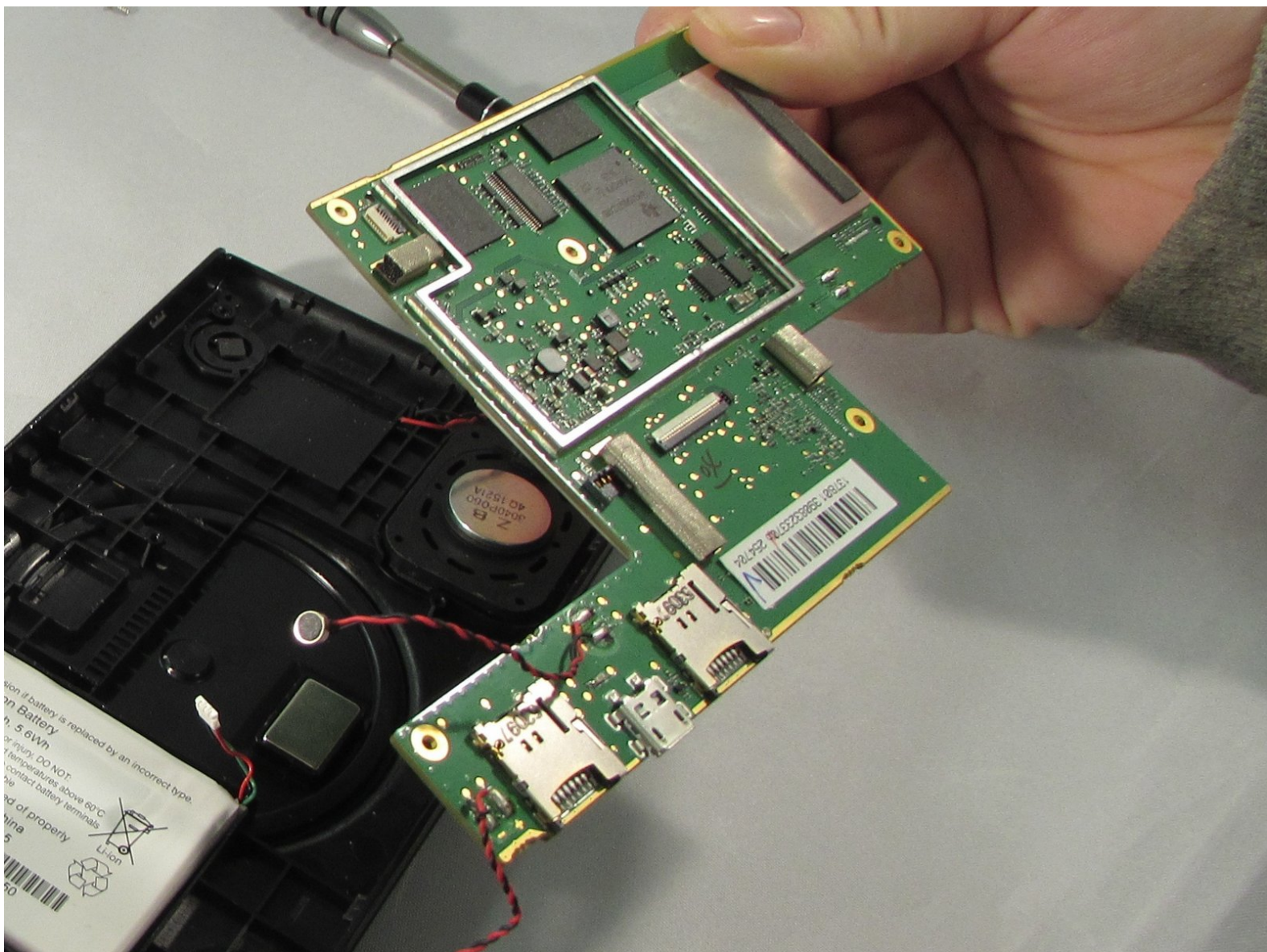




Garmin nuviCam LMTHD Motherboard Replacement

Written By: Riki Wippel

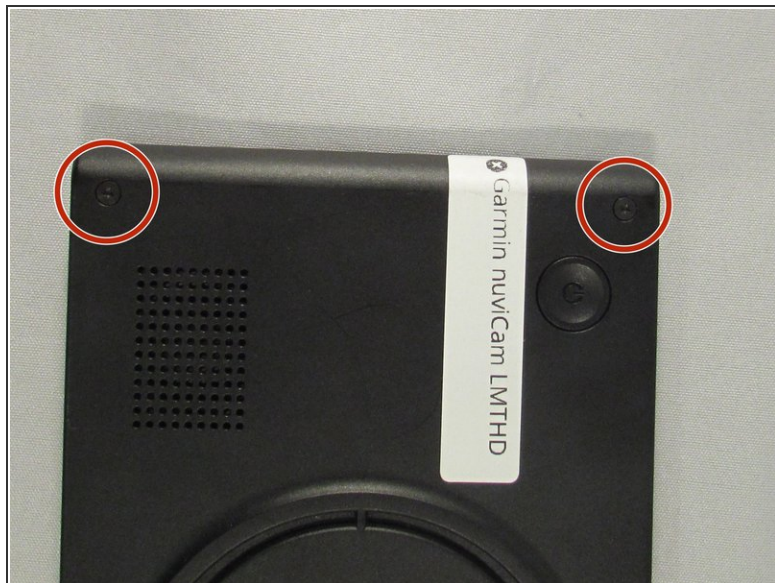




TOOLS:

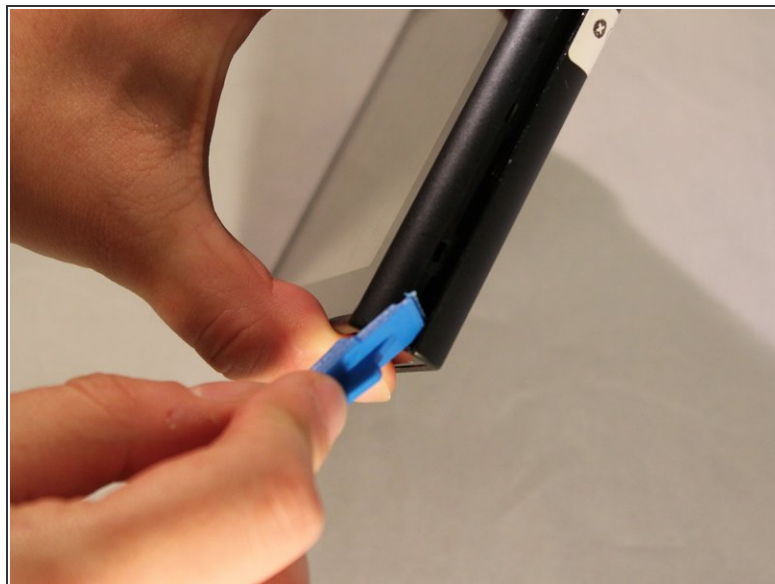
- [T6 Torx Screwdriver](#) (1)
 - [iFixit Opening Tools](#) (1)
-

Step 1 — Screen



- Remove the four 6.9 mm black screws using the T6 screw bit.

Step 2



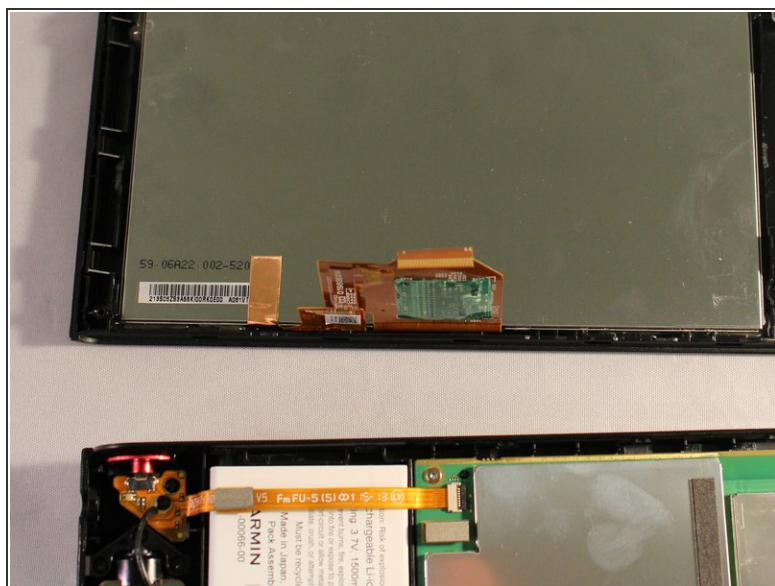
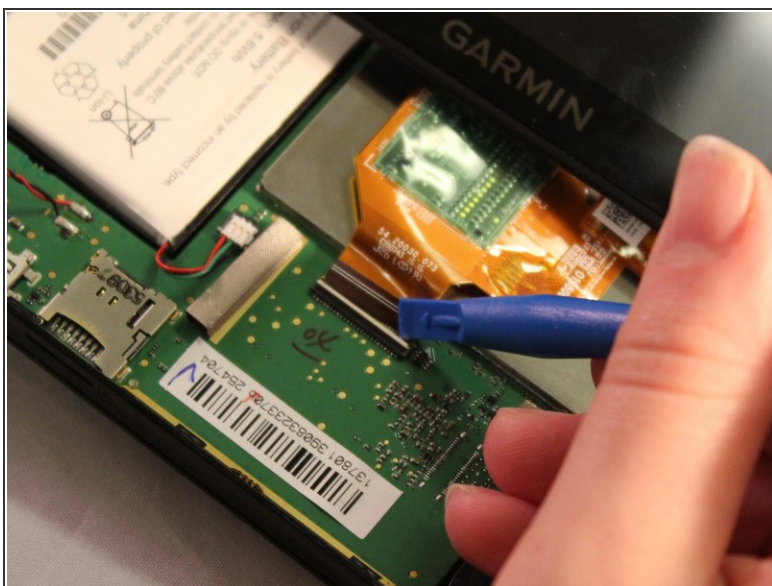
- Pry the device open using a plastic opening tool.
- We suggest starting from the dash camera side for easier opening
- ⓘ You may have to use a little force, the screen is hard to remove.

Step 3



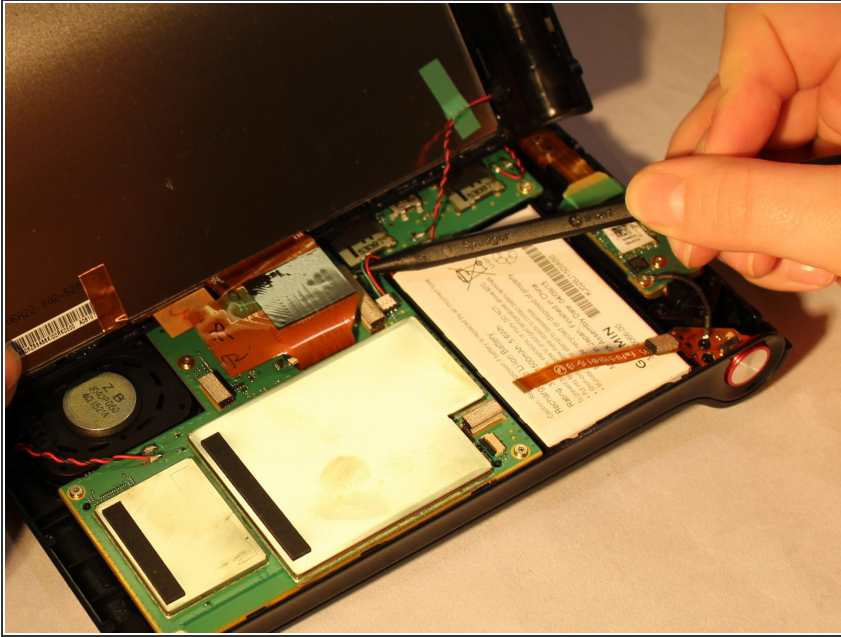
- Disconnect the black and red wire from the screen.

Step 4



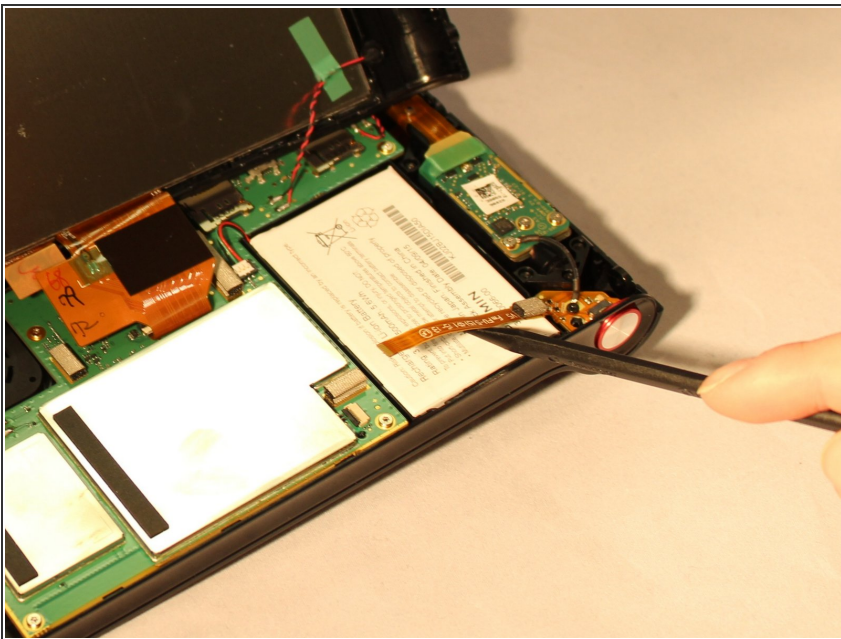
- Disconnect the orange strip by flipping up the connector with a plastic opening tool and sliding the cable out.

Step 5 — Motherboard



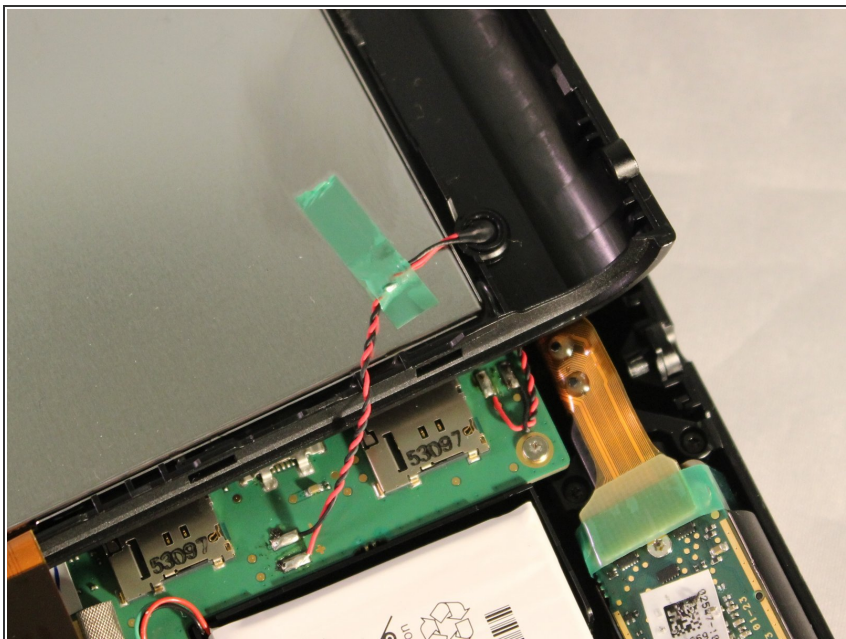
- Disconnect battery wire from motherboard.

Step 6



- Disconnect yellow ribbon cable from motherboard.

Step 7



- Pull off black and red wire from screen.

Step 8



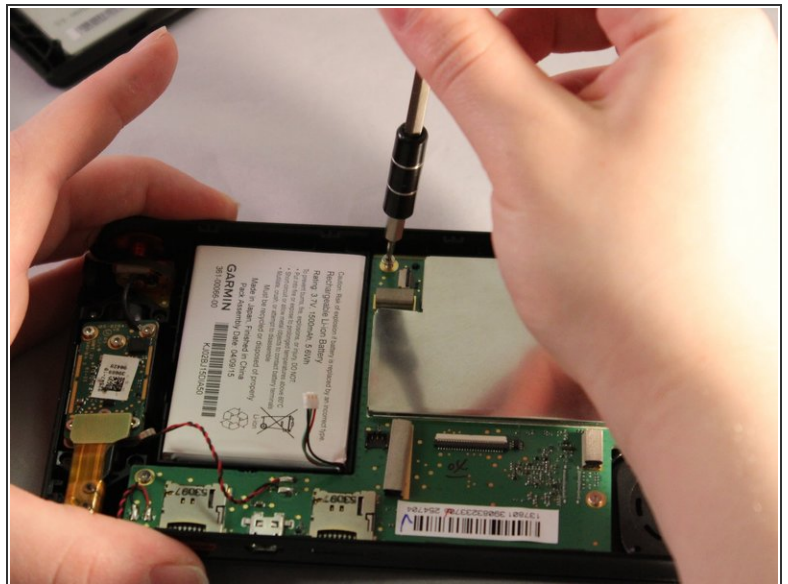
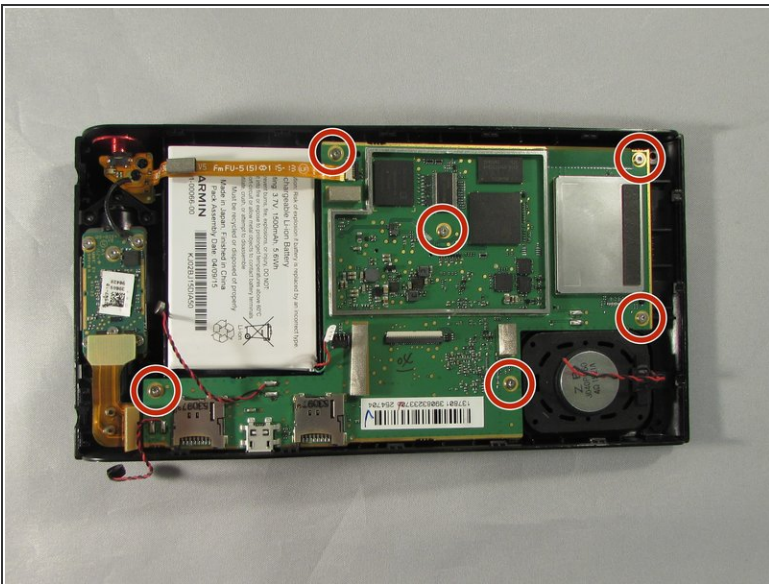
- Disconnect the orange cable strip connected to the screen using a plastic opening tool, lift white teeth up and slide strip out.

Step 9



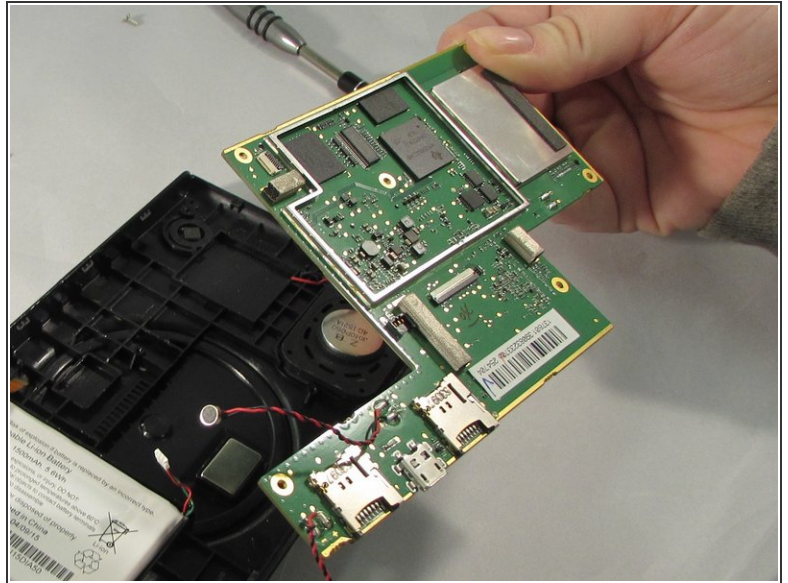
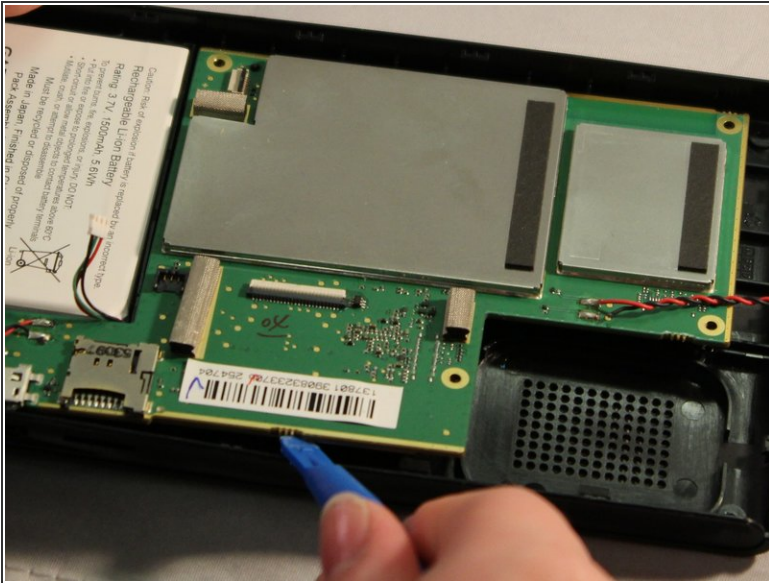
- Remove silver plate from motherboard.

Step 10



- Remove all six 5.74mm screws from motherboard using the T4 screw bit.

Step 11



- Lift motherboard out of device using plastic opening tools.

To reassemble your device, follow these instructions in reverse order.