



Garmin nuviCam LMTHD Screen Replacement

Replacing the screen of your Garmin nuviCam LMTHD.

Written By: Sarah Myers

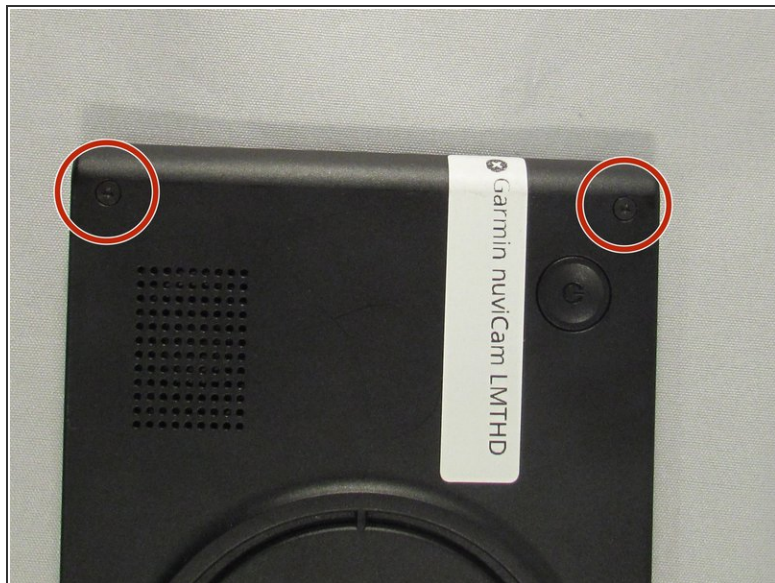




TOOLS:

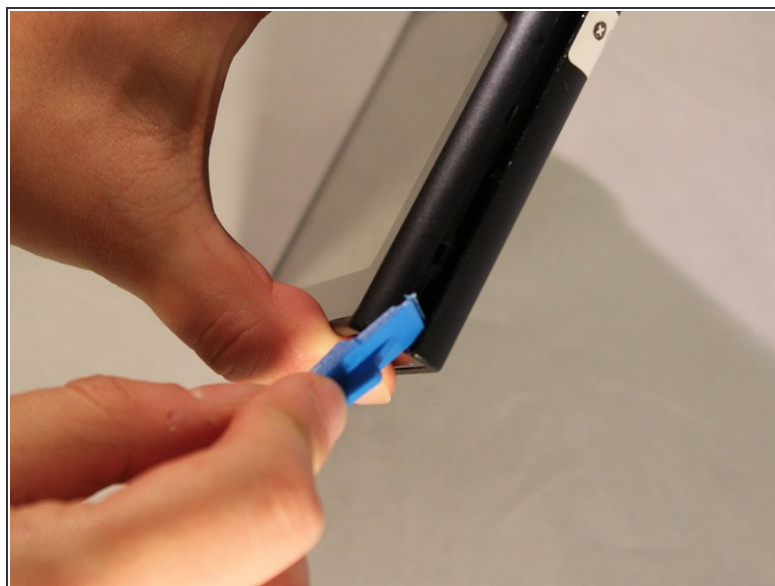
- [T6 Torx Screwdriver](#) (1)
 - [iFixit Opening Tools](#) (1)
-

Step 1 — Screen



- Remove the four 6.9 mm black screws using the T6 screw bit.

Step 2



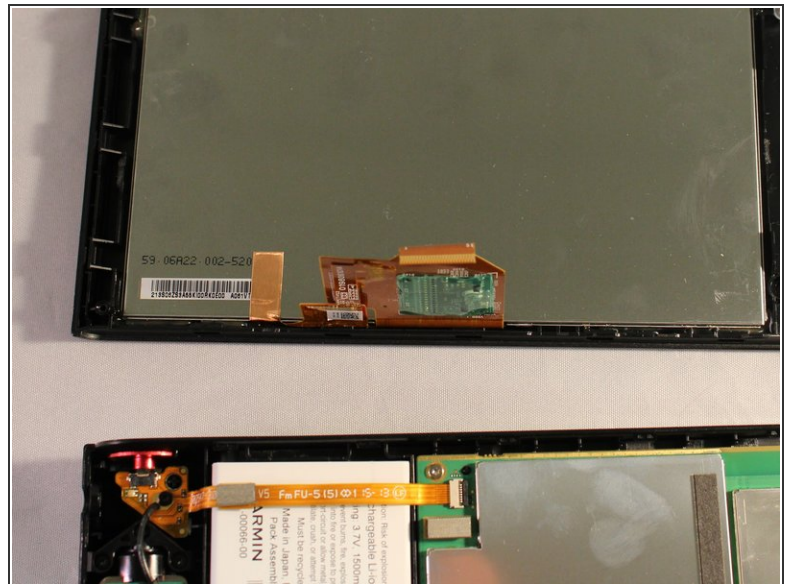
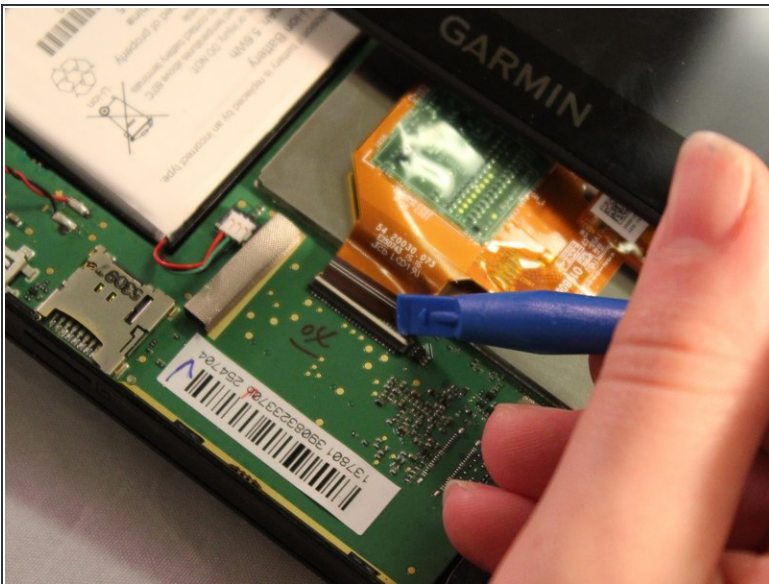
- Pry the device open using a plastic opening tool.
- We suggest starting from the dash camera side for easier opening
- ⓘ You may have to use a little force, the screen is hard to remove.

Step 3



- Disconnect the black and red wire from the screen.

Step 4



- Disconnect the orange strip by flipping up the connector with a plastic opening tool and sliding the cable out.

To reassemble your device, follow these instructions in reverse order.

This document was generated on 2019-10-25 10:36:34 AM (MST).

