



Gateway 3545GZ Fan Replacement

This guide demonstrates the replacement of the fan for the Gateway 3545GZ.

Written By: Nathan Parr

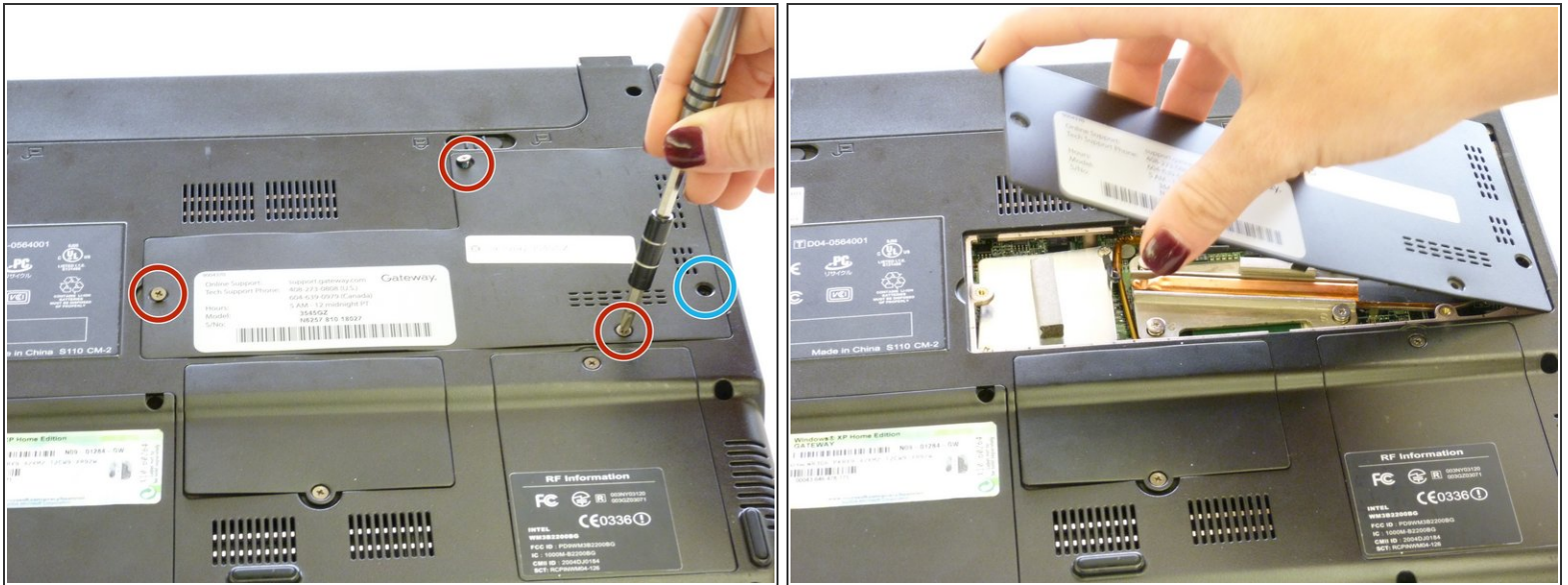




TOOLS:

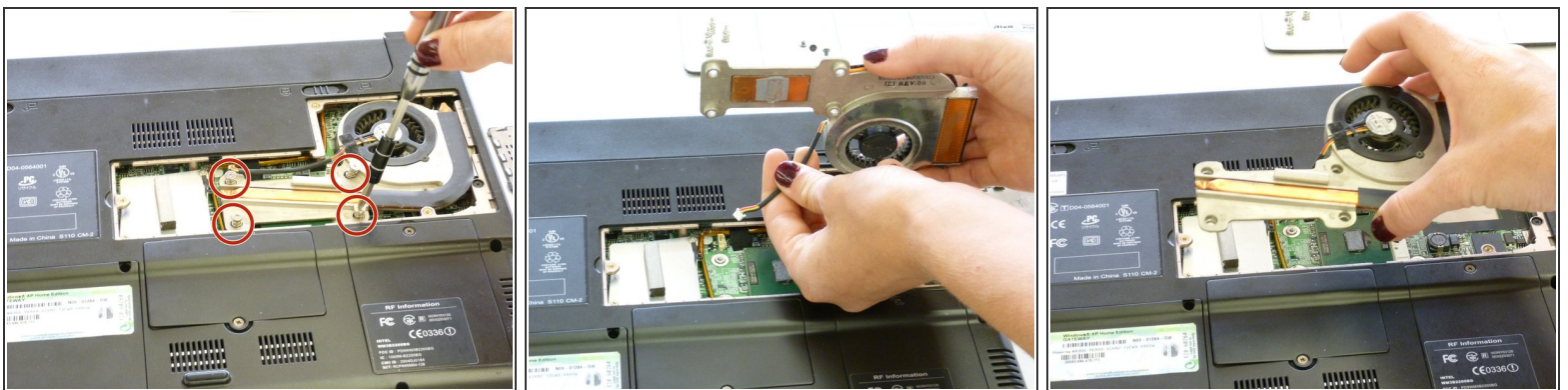
- [Phillips #1 Screwdriver](#) (1)
-

Step 1 — Fan



- Unscrew the screws with a PH1 Phillips-Head screwdriver and pry off the panel with care.
- ⓘ Screws that are circled in red are 3mm; the screw circled in blue is 14mm

Step 2



- Unscrew the four screws holding it in place with the same PH1 Phillips-Head screwdriver. They are numbered on the fan, 1,2,3,4.
- ⓘ The four screws are 12mm long, they also have a spring surrounding them.
- Then carefully pull the cord connecting the fan to the notebook.
- Insert your replacement fan, plug in its cord, screw it into place, and reattach the protective cover.

To reassemble your device, follow these instructions in reverse order.