



# Gateway 3545GZ Internet Card Replacement

This guide will teach you how to replace the internet card of your Gateway 3545GZ.

Written By: Baylee Harding

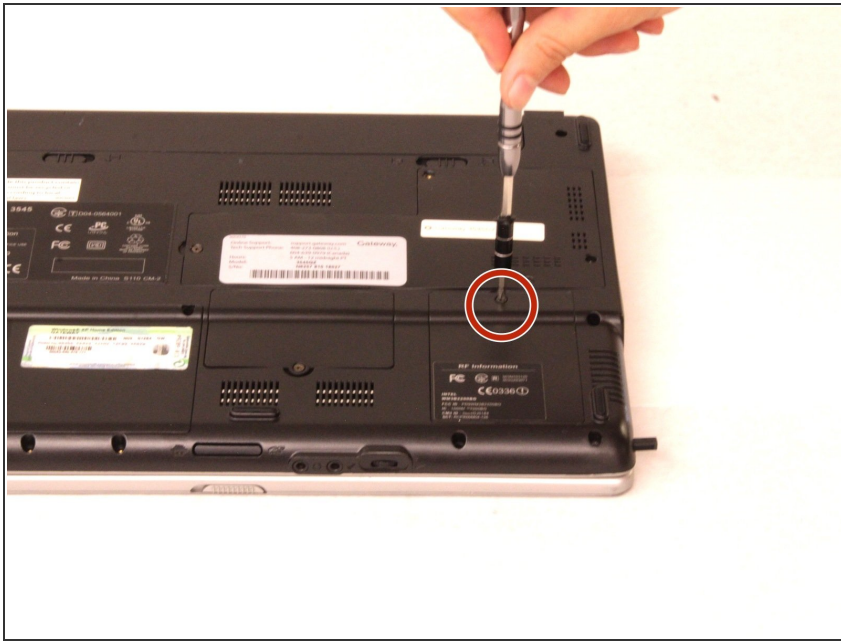




## TOOLS:

- [Phillips #1 Screwdriver](#) (1)
-

## Step 1 — Internet Card



- Flip your laptop over and locate the sticker indicating where the internet card is.
- Using a PH1 Phillips-Head screwdriver, carefully unscrew the screw holding the flap down
- ⓘ The screw length is 3mm

## Step 2



- Carefully remove the flap over the internet card.

## Step 3



- Unhook the two cords attached to the internet card and remove the card.
- Next, pull the two metal hooks holding the card in place away from each other.
- The card should pop out and just take it out from the dock.

To reassemble your device, follow these instructions in reverse order.