



# Gateway 600YG2 CD/DVD or Floppy drives Replacement

Removal of CD/DVD and floppy drives.

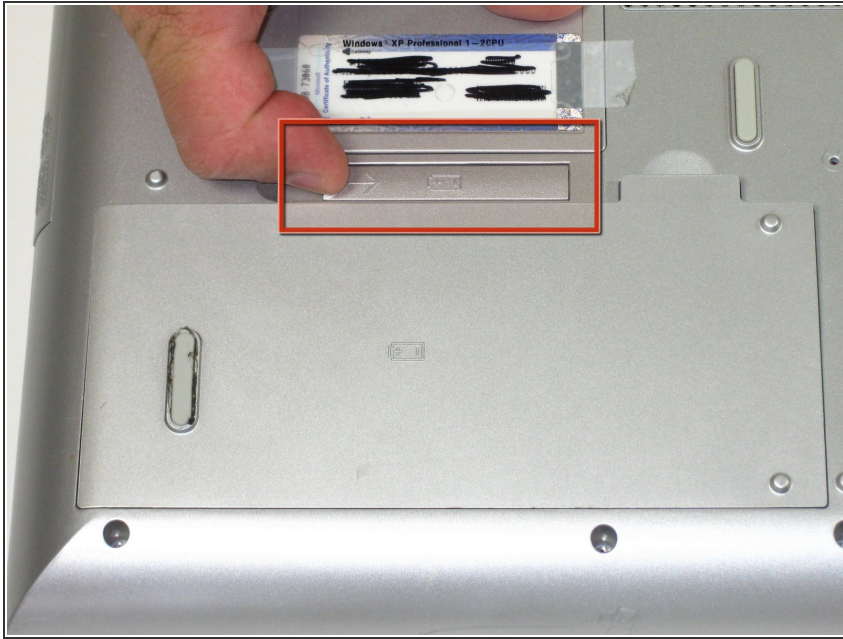
Written By: Elizabeth Mazer



# INTRODUCTION

Removal of CD/DVD and floppy drives

## Step 1 — Battery



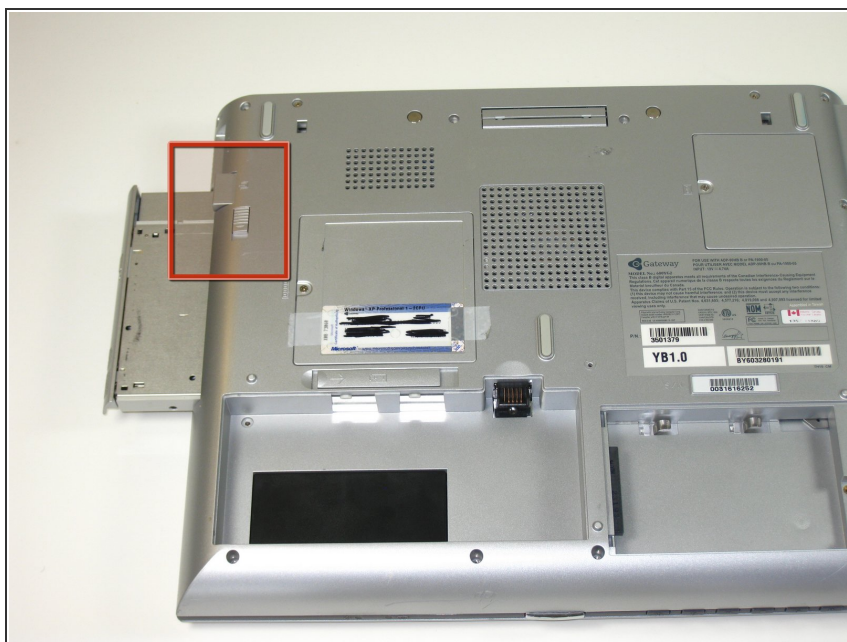
- Flip the laptop over. Slide the battery release tab to the right.

## Step 2



- Lift the battery out.

## Step 3 — CD/DVD or Floppy drives



- Slide release and push button to eject drive
- Pull drive out.
- ⚠ When reinserting drives be sure to insert back into original slot in order to avoid interface conflicts.

To reassemble your device, follow these instructions in reverse order.