



Gateway 600YG2 Keyboard Replacement

Removal of keyboard

Written By: Elizabeth Mazer



INTRODUCTION

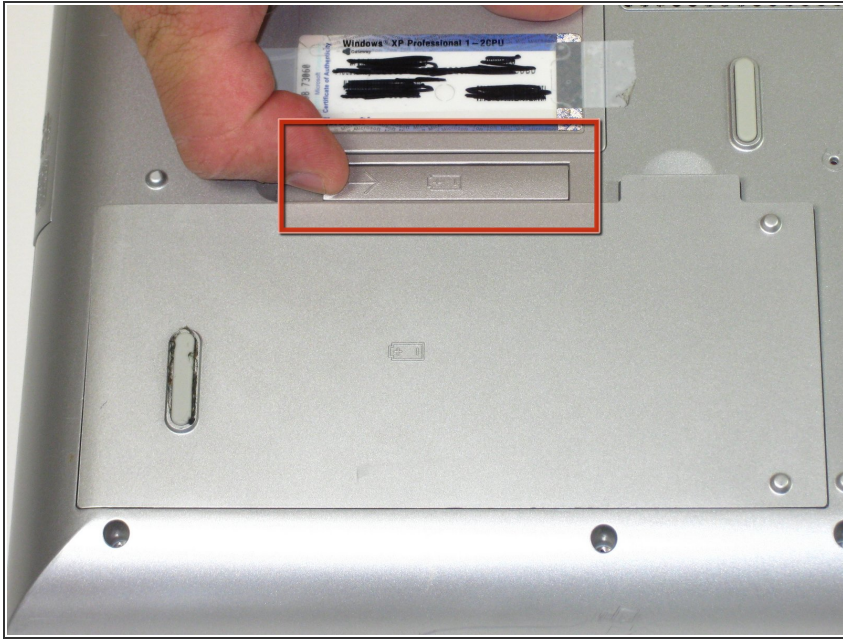
How to remove keyboard.



TOOLS:

- [Phillips #0 Screwdriver](#) (1)
 - [Spudger](#) (1)
-

Step 1 — Battery



- Flip the laptop over. Slide the battery release tab to the right.

Step 2



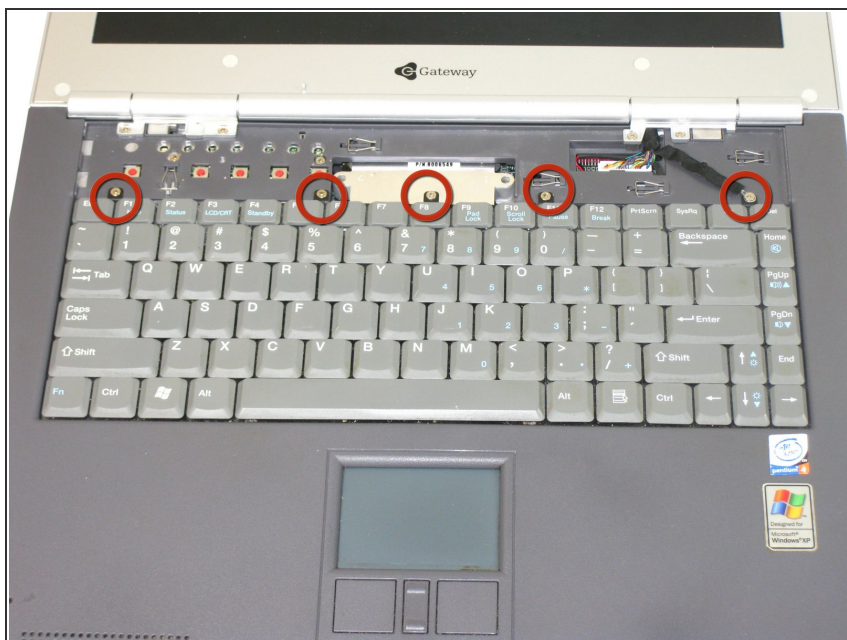
- Lift the battery out.

Step 3 — Power button panel



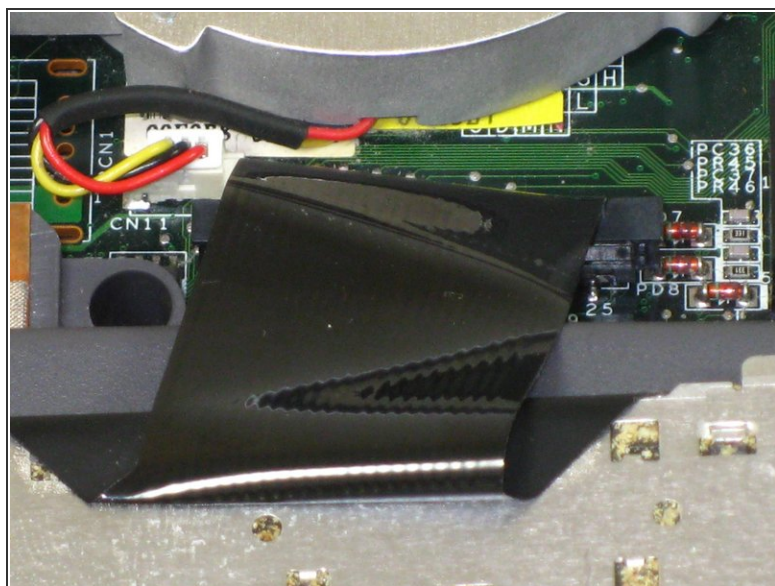
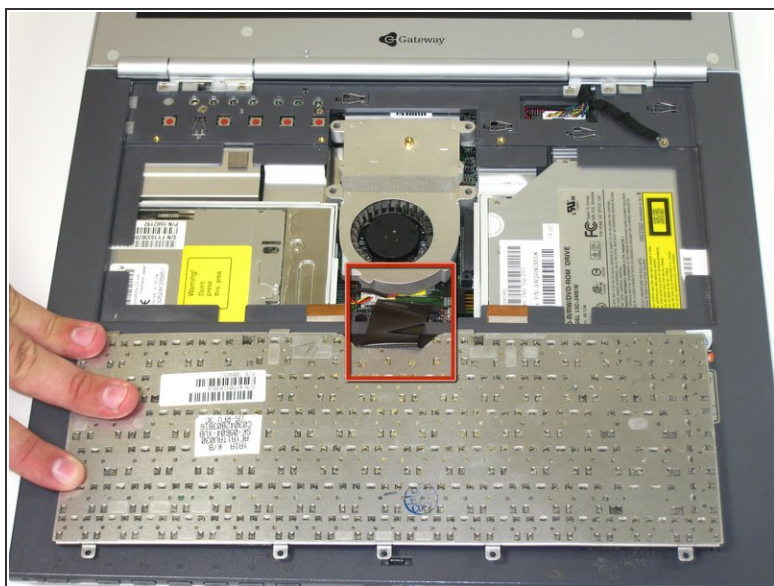
- Insert spudger between sysrq and ins keys.
- Gently lift power button panel from the right to left.

Step 4 — Keyboard



- Remove the 5 screws holding the keyboard in place.

Step 5



- ⚠ CAUTION: When lifting the keyboard out, do not lift keyboard up. Only fold back along the space bar edge.
- ⚠ DO NOT PULL the black cable by the ribbon section; only pull it by the connector itself.
- Follow the black ribbon cable to the connector and gently pull straight up.

To reassemble your device, follow these instructions in reverse order.