



Gateway 600YG2 LCD Display Replacement

Removal of LCD display.

Written By: Elizabeth Mazer



INTRODUCTION

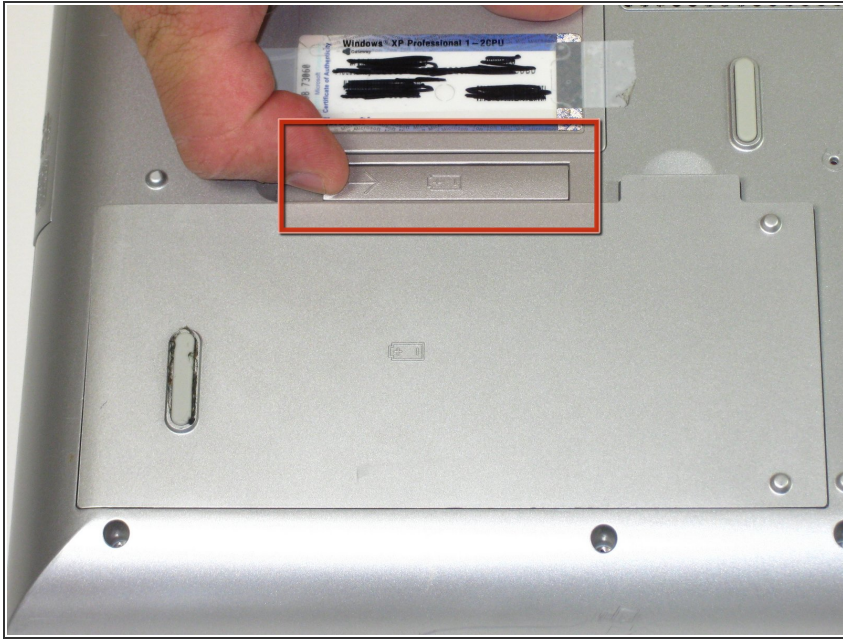
Removal of LCD display



TOOLS:

- [Phillips #0 Screwdriver](#) (1)
 - [Spudger](#) (1)
-

Step 1 — Battery



- Flip the laptop over. Slide the battery release tab to the right.

Step 2



- Lift the battery out.

Step 3 — Power button panel



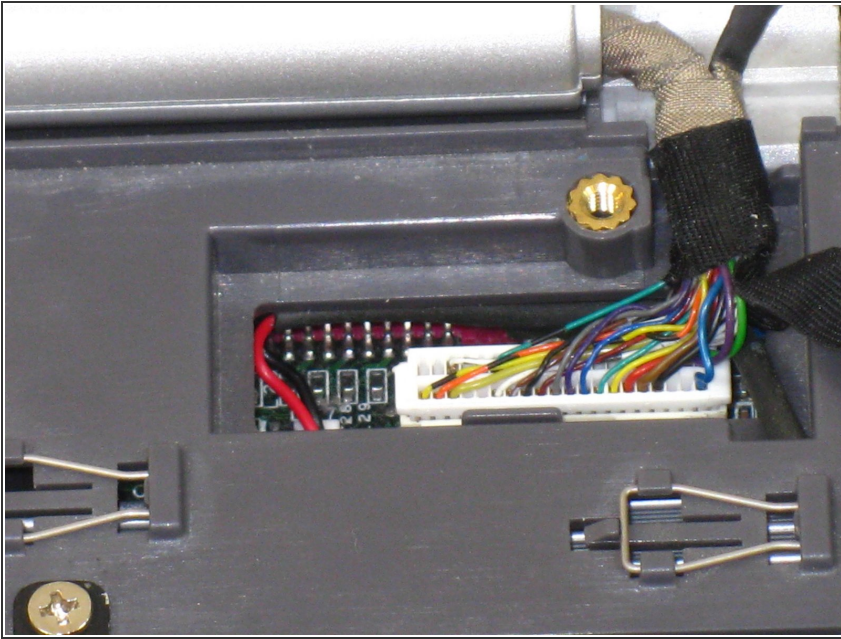
- Insert spudger between sysrq and ins keys.
- Gently lift power button panel from the right to left.

Step 4 — LCD Display



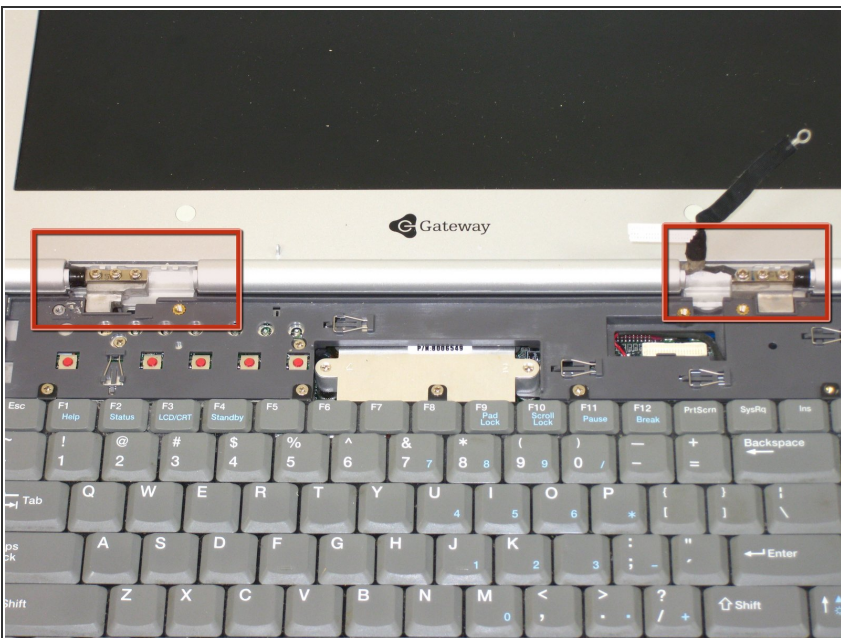
- Remove 5 screws.
- ⓘ 4 screws holding LCD hinge covers in place and 1 screw for LCD grounding.
- Remove hinge covers.

Step 5



- Gently unplug LCD from system board.

Step 6



- Remove 6 screws holding LCD to hinge.

Step 7



- Pull LCD away from case.

To reassemble your device, follow these instructions in reverse order.