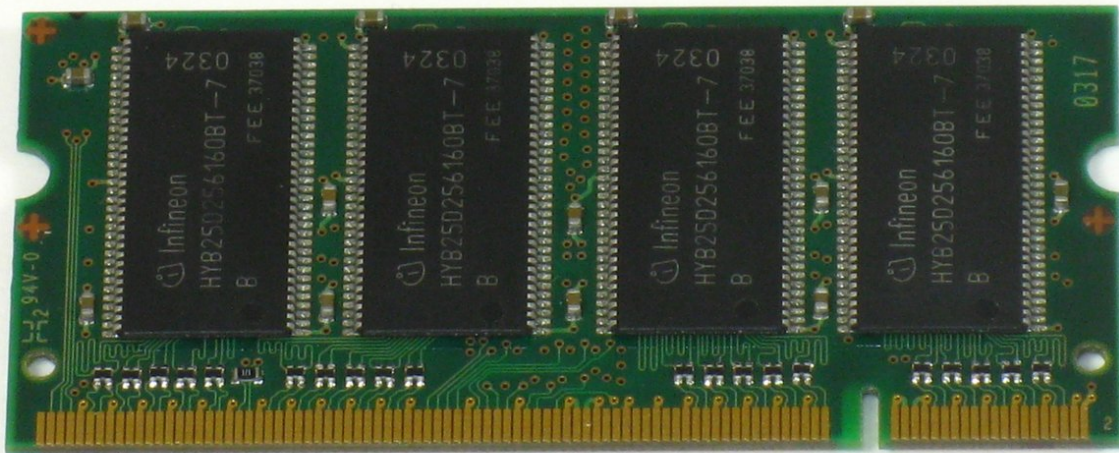




Gateway 600YG2 Memory Replacement

Removal of PC2100 memory chips.

Written By: Elizabeth Mazer



INTRODUCTION

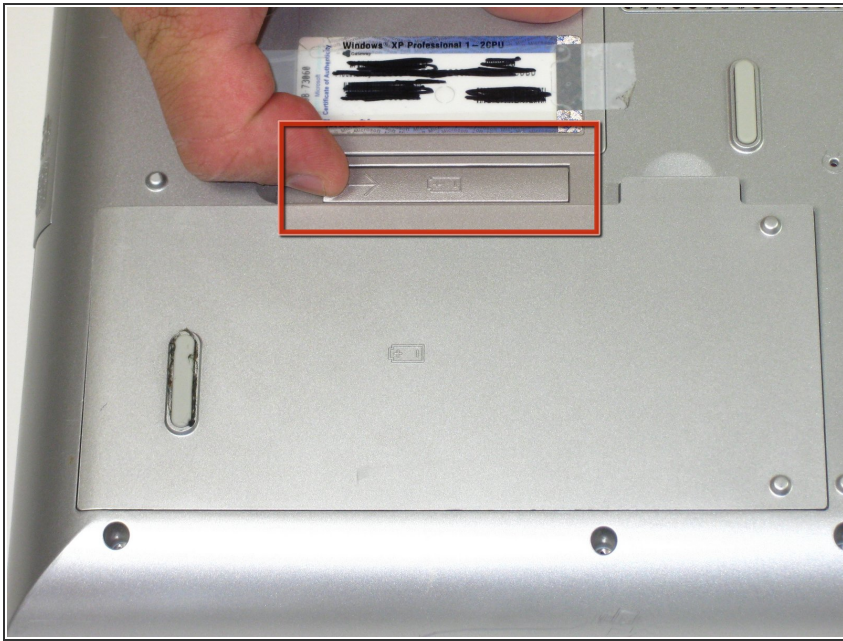
Removal of on-board memory.



TOOLS:

- [Phillips #0 Screwdriver](#) (1)
-

Step 1 — Battery



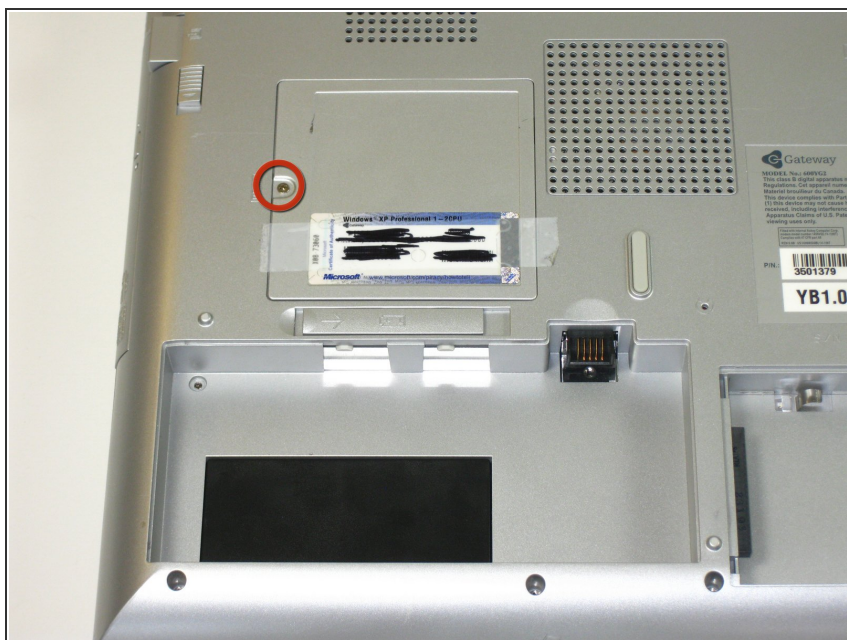
- Flip the laptop over. Slide the battery release tab to the right.

Step 2



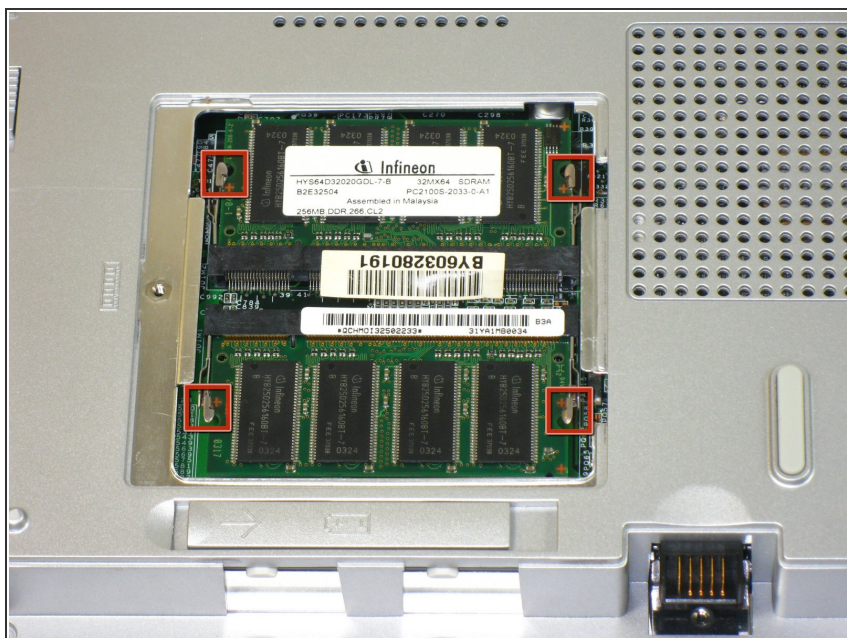
- Lift the battery out.

Step 3 — Memory



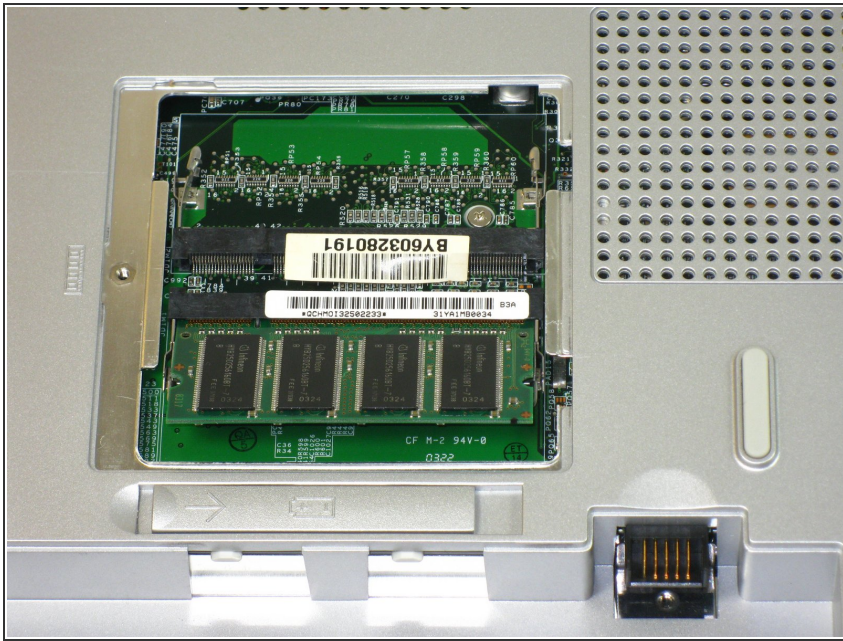
- Remove access cover by unscrewing captive screw.

Step 4



- Slide locking tabs outward

Step 5



- Slide memory module out

To reassemble your device, follow these instructions in reverse order.