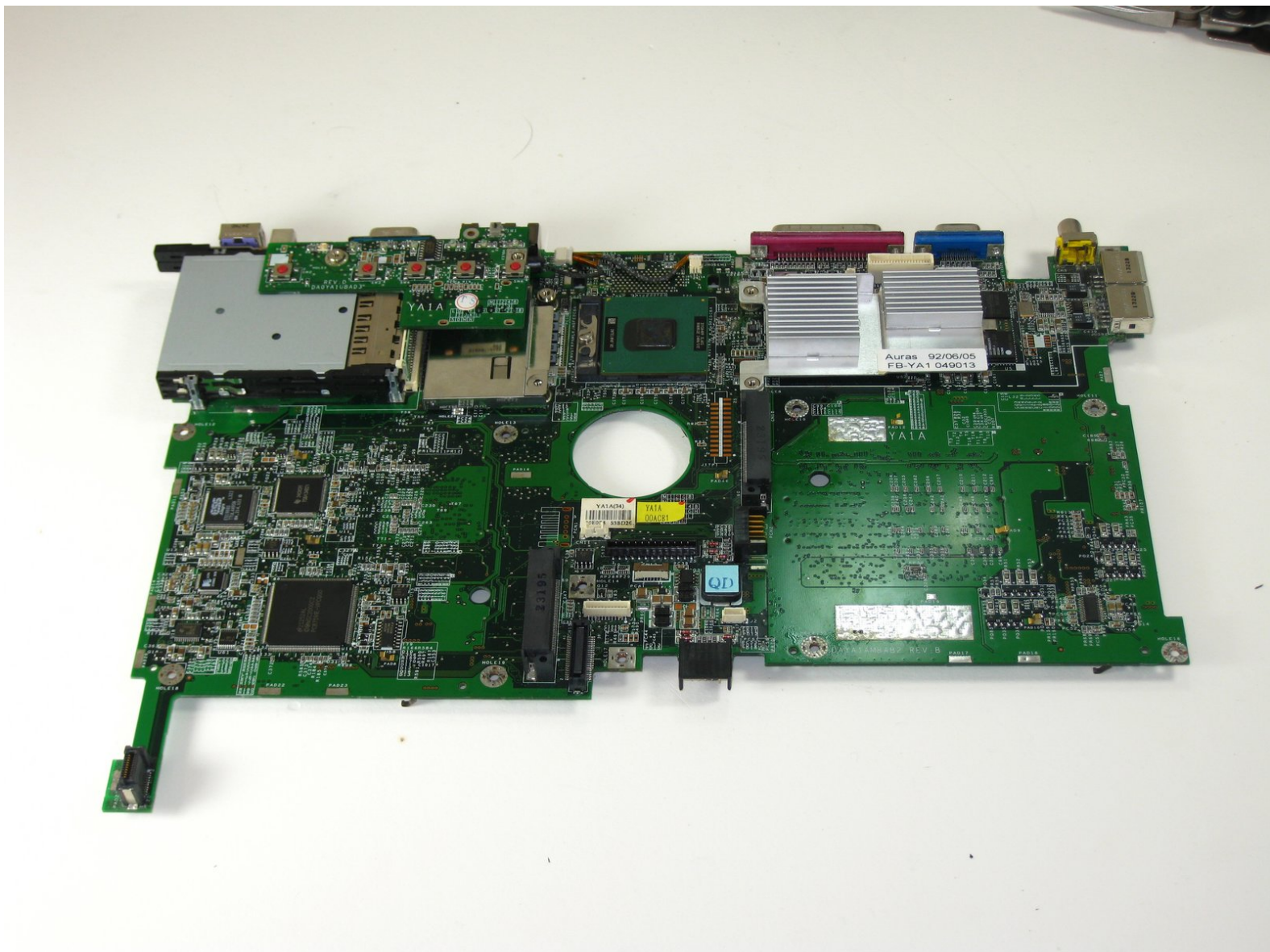




Gateway 600YG2 System Board Replacement

Removal of the system board

Written By: Elizabeth Mazer



INTRODUCTION

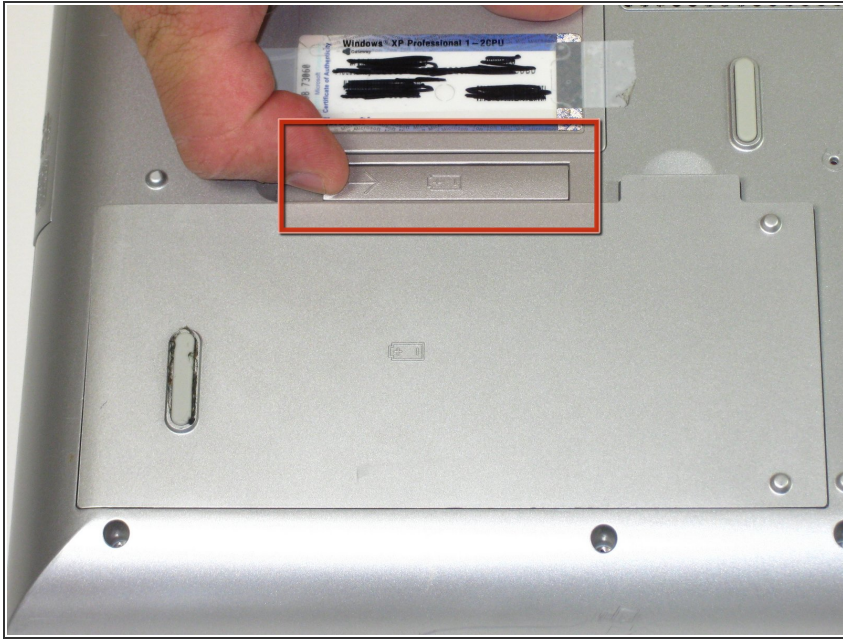
removal of the system board



TOOLS:

- [5mm Nut Driver](#) (1)
 - [Phillips #0 Screwdriver](#) (1)
 - [Spudger](#) (1)
-

Step 1 — Battery



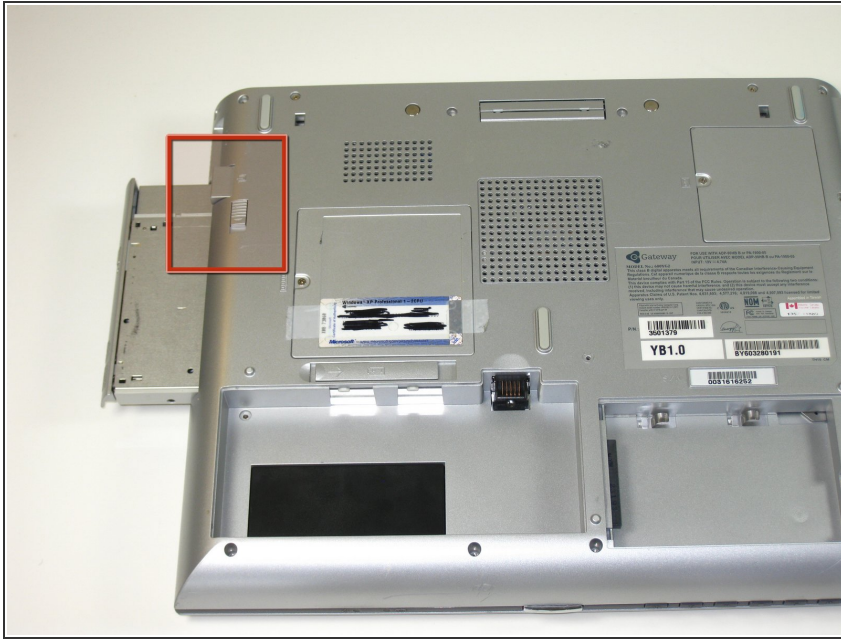
- Flip the laptop over. Slide the battery release tab to the right.

Step 2



- Lift the battery out.

Step 3 — CD/DVD or Floppy drives



- Slide release and push button to eject drive
- Pull drive out.
- ⚠ When reinserting drives be sure to insert back into original slot in order to avoid interface conflicts.

Step 4 — Hard Drive



- Unscrew 1 captive screw holding hard drive cover on.
- slide hard drive to the right and remove.
- for detailed pictures and info go to [Gateway Support](#)

Step 5 — Power button panel



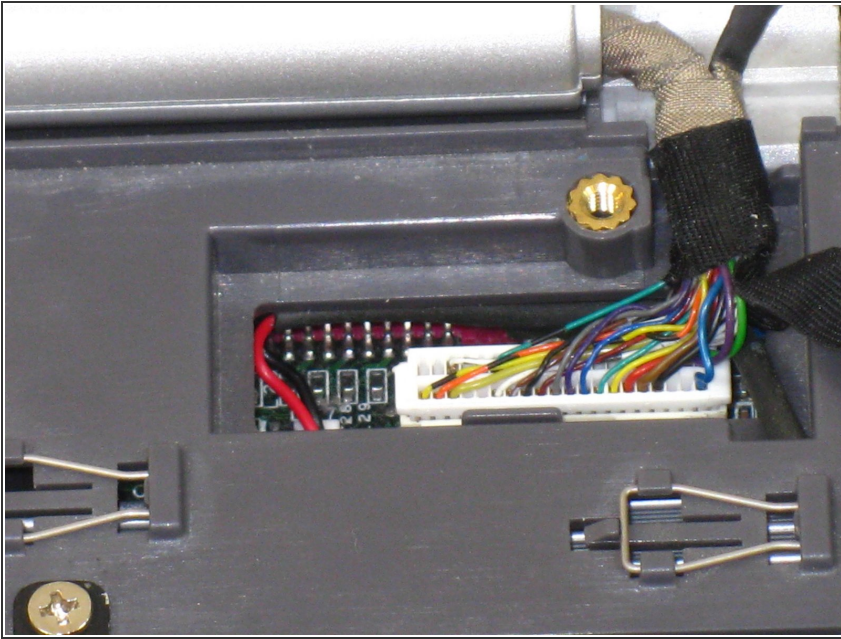
- Insert spudger between sysrq and ins keys.
- Gently lift power button panel from the right to left.

Step 6 — LCD Display



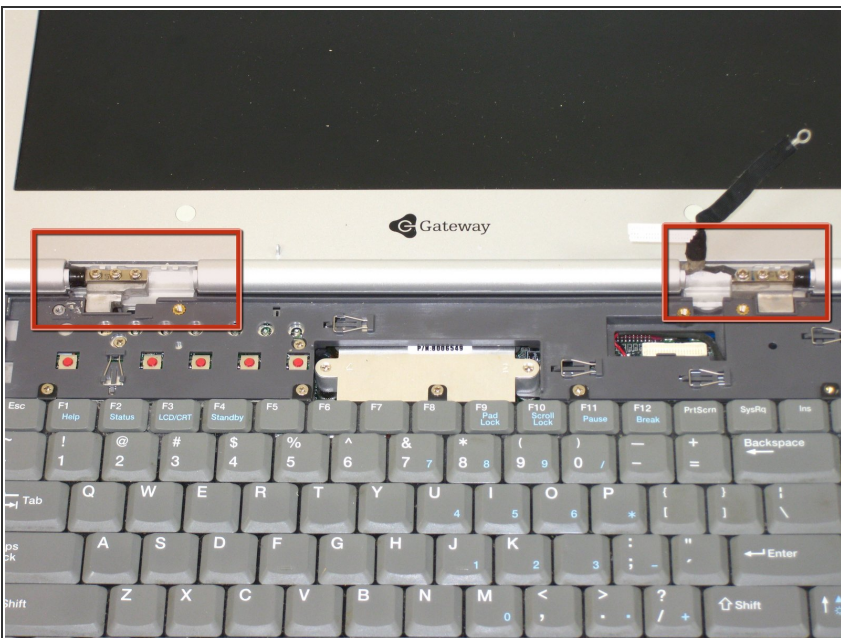
- Remove 5 screws.
- ⓘ 4 screws holding LCD hinge covers in place and 1 screw for LCD grounding.
- Remove hinge covers.

Step 7



- Gently unplug LCD from system board.

Step 8



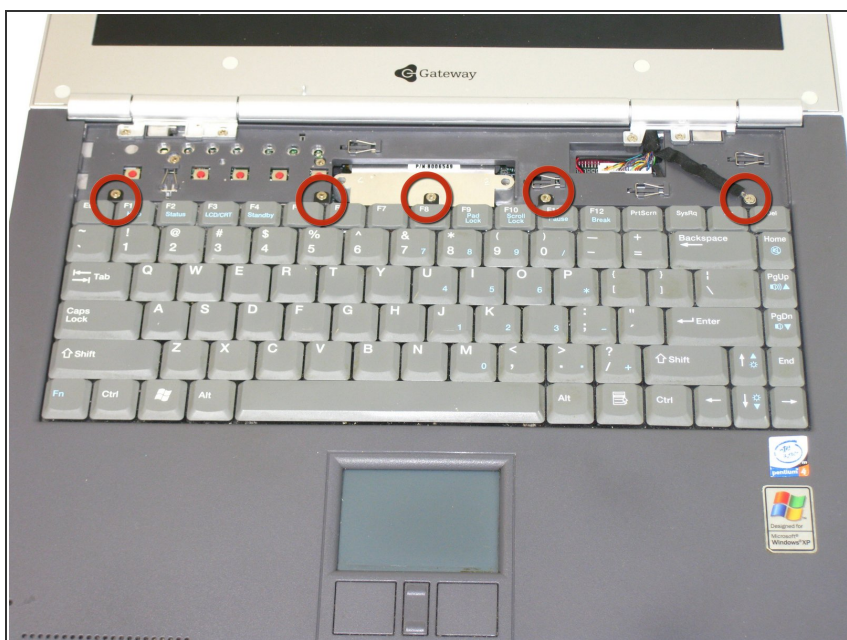
- Remove 6 screws holding LCD to hinge.

Step 9



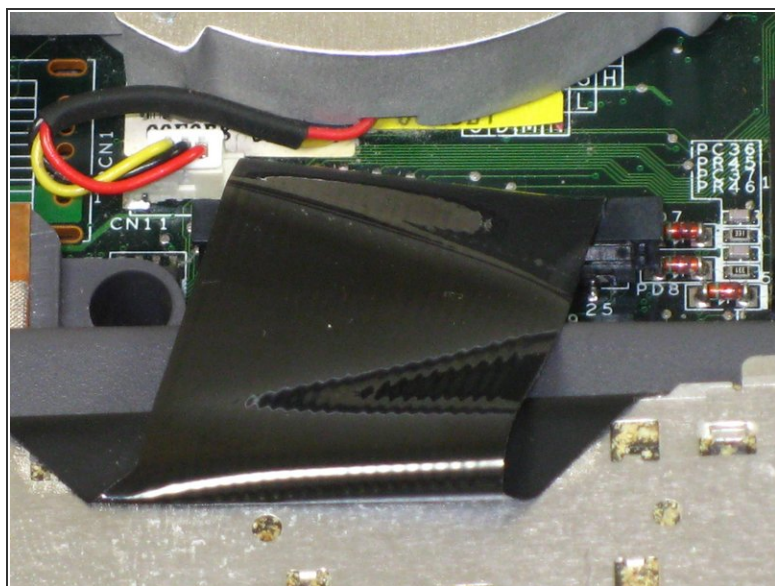
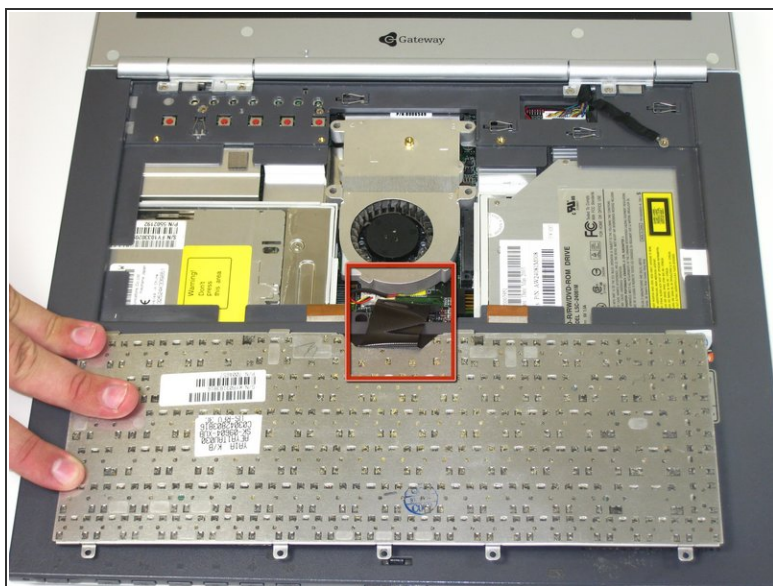
- Pull LCD away from case.

Step 10 — Keyboard



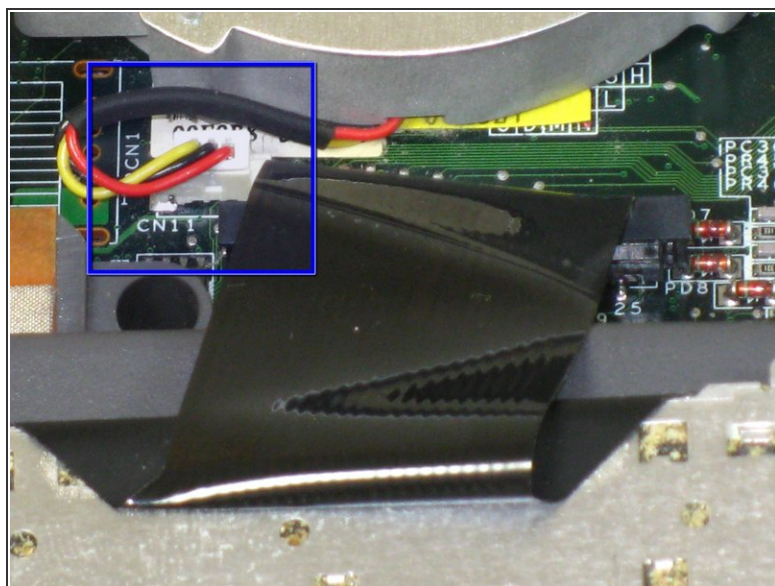
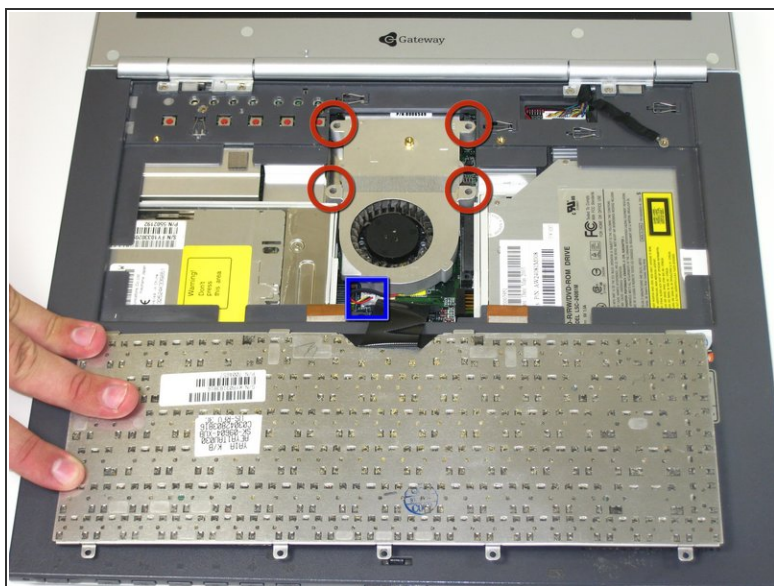
- Remove the 5 screws holding the keyboard in place.

Step 11



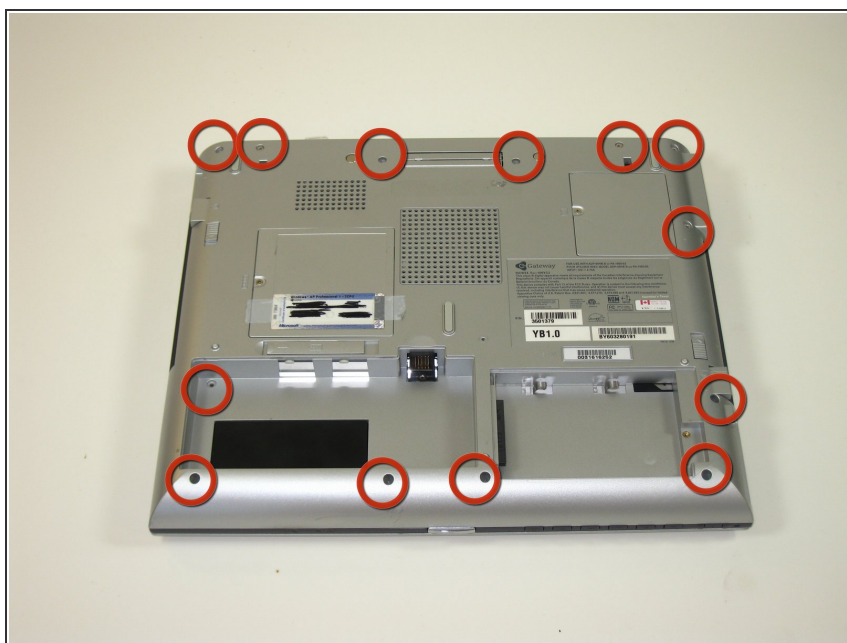
- ⚠ CAUTION: When lifting the keyboard out, do not lift keyboard up. Only fold back along the space bar edge.
- ⚠ DO NOT PULL the black cable by the ribbon section; only pull it by the connector itself.
- Follow the black ribbon cable to the connector and gently pull straight up.

Step 12 — System Fan



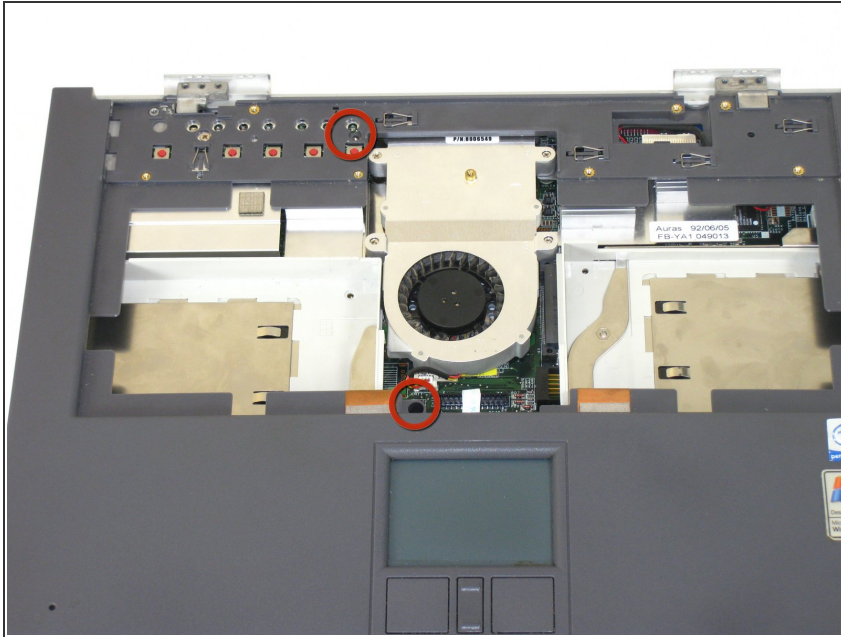
- Unscrew the 4 captive screws.
- Unplug fan from the system and pull it out. The fan unit should slide forward before coming free.

Step 13 — Top Case



- Remove 13 screws from bottom of computer

Step 14



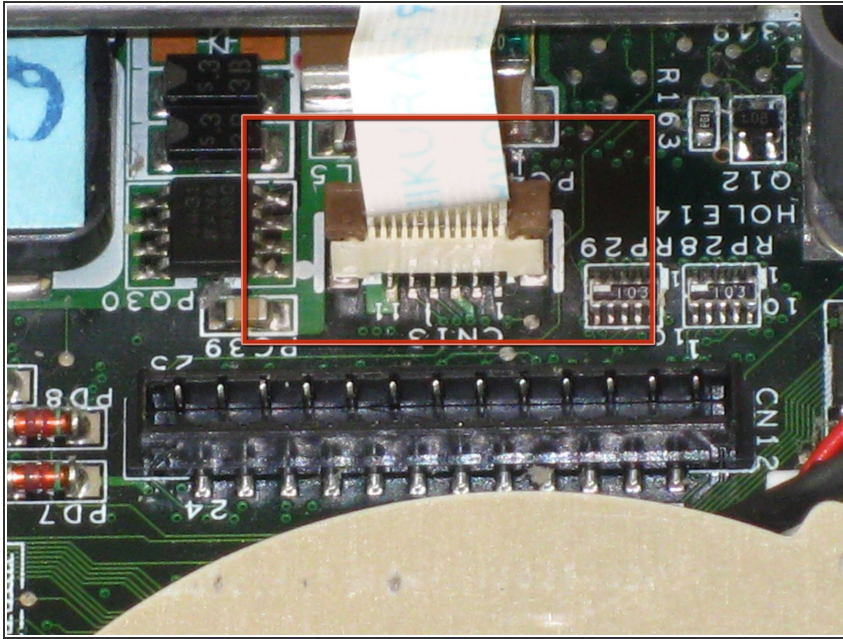
- Remove screws

Step 15



- remove 4 screws from back of case

Step 16



⚠ WARNING Failure to do this step will damage mouse pad ribbon.

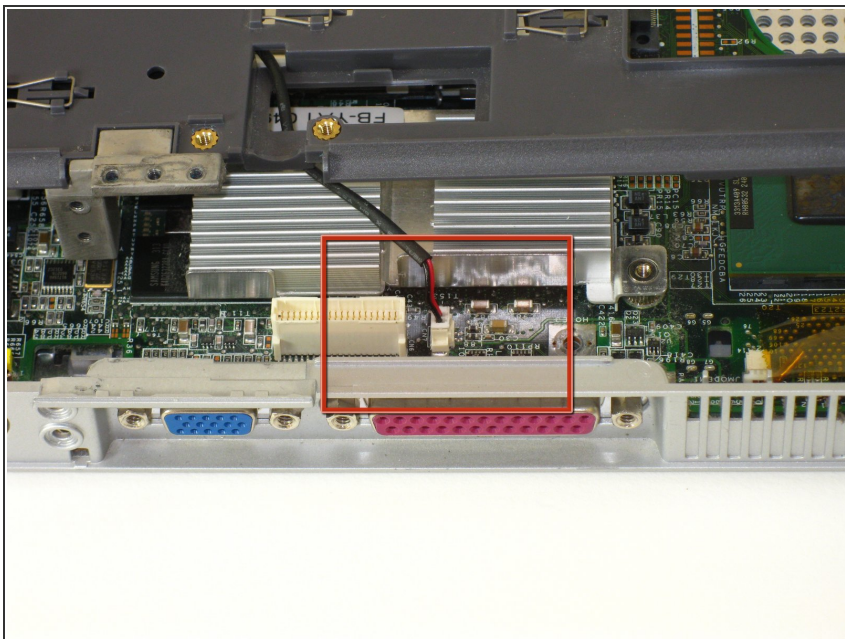
- Lift plug holding mouse ribbon about 1/16 inch or until it stops
- remove ribbon

Step 17



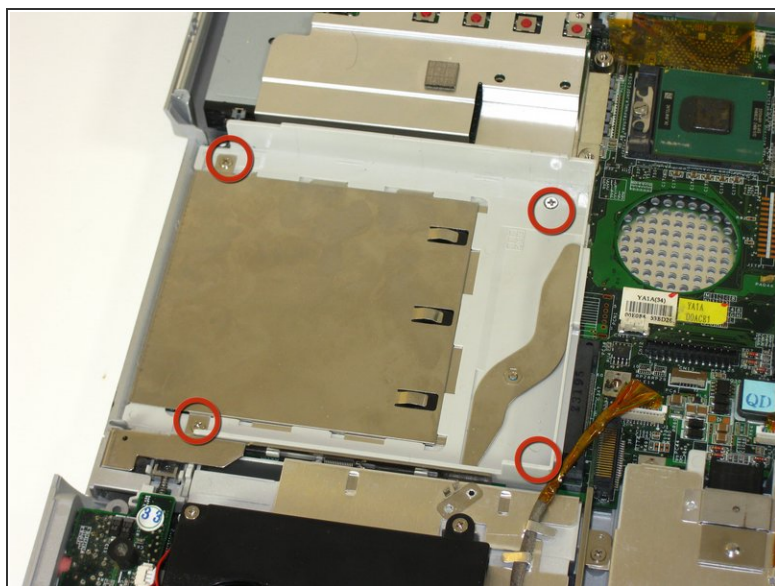
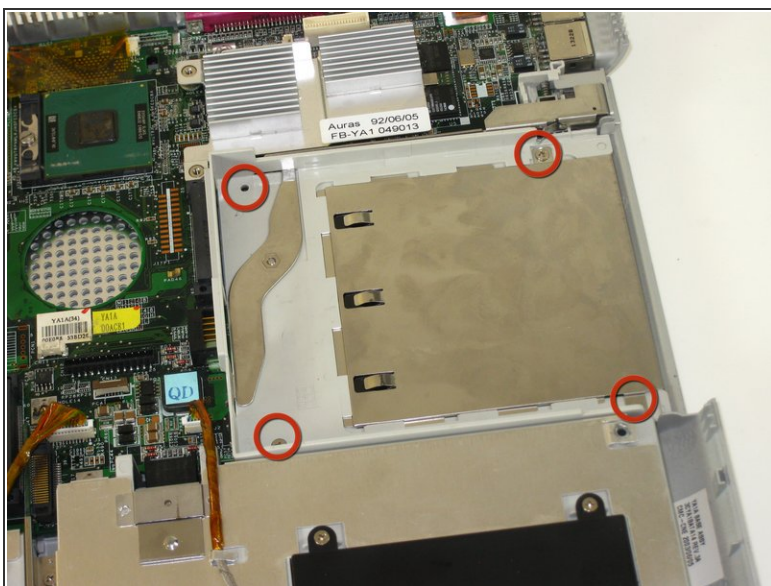
- Insert spudger between upper and lower case at drive bay closest to battery.
- Carefully and slowly go around entire case unseating all plastic clips holding upper to lower.

Step 18



- Lift upper case free about 1/4 inch
- At rear of case is one last connecting wire. Unplug and remove upper case

Step 19 — System Board



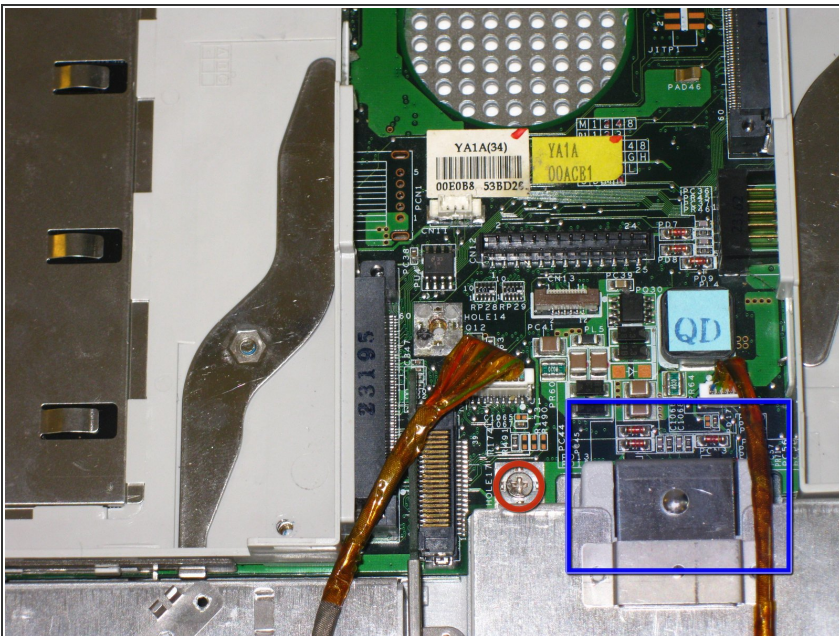
- Remove 8 screws from drive bays.

Step 20



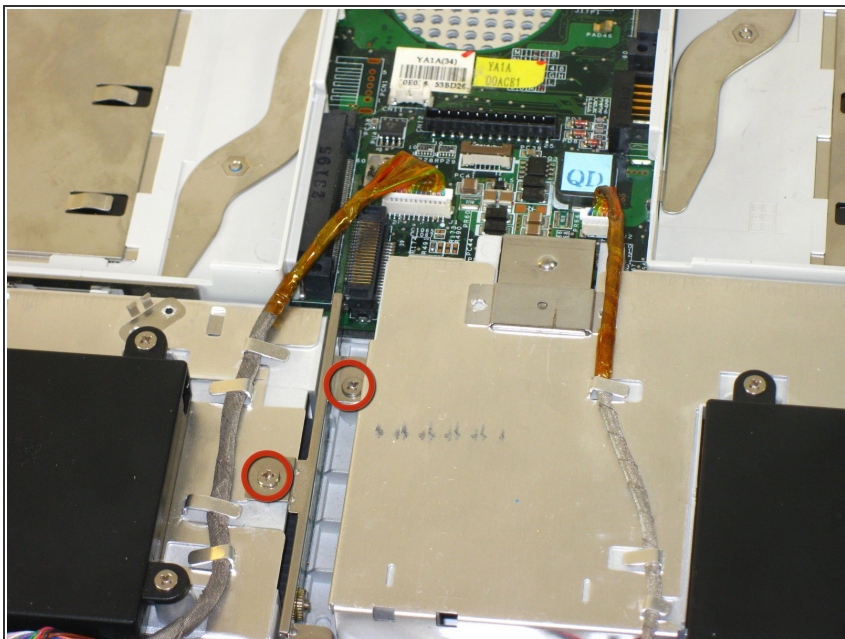
- Remove 6 5mm hex nuts from back of laptop.

Step 21



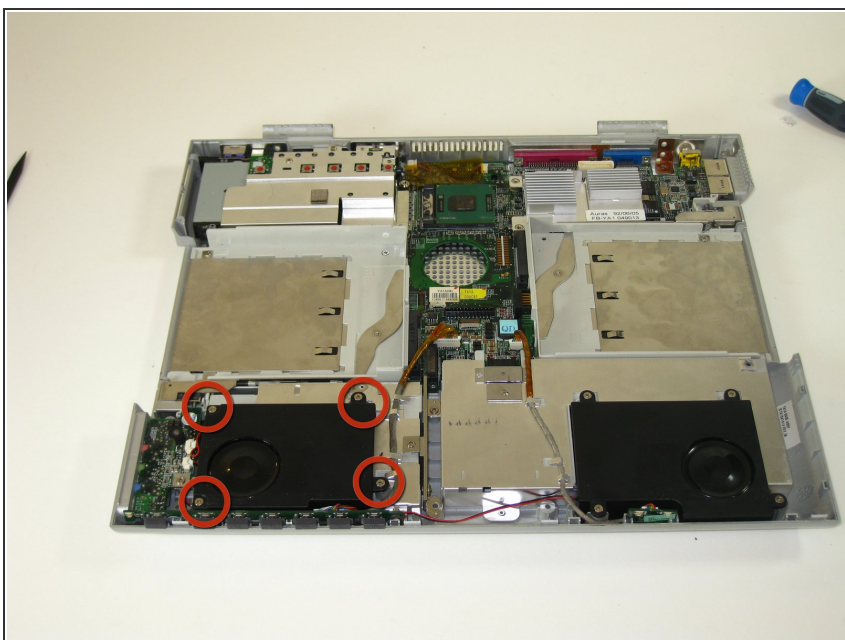
- Remove screw
- Slide metal clip into battery bay

Step 22



- Remove two screws.
- Hard drive extension should lift out from system board.

Step 23



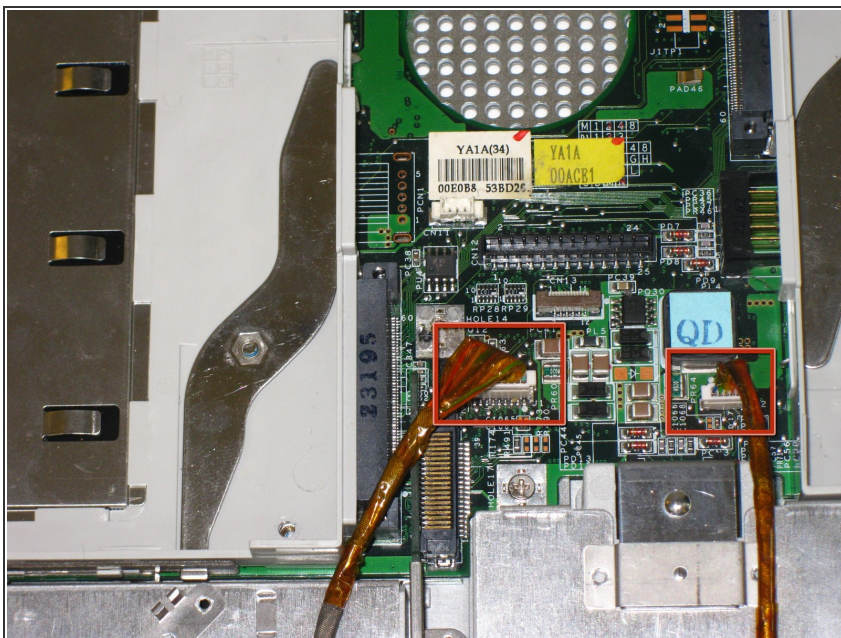
- Remove 4 screws holding left speaker for ease of access to connectors and external sound board.

Step 24



- Remove screw and unplug speakers from external sound board.
- Lift external soundboard away from system board and remove.

Step 25



- Unplug audio DJ
- Unplug System status light board
- Starting on the right side of case gently lift and slide system board till it comes free of lower case.

To reassemble your device, follow these instructions in reverse order.