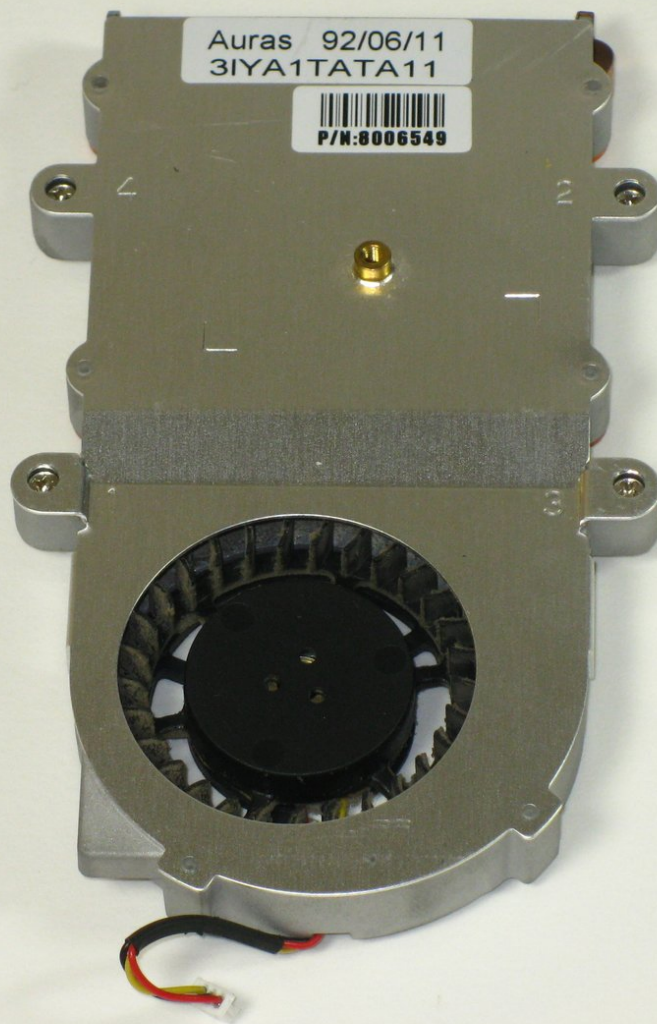




Gateway 600YG2 System Fan Replacement

Removal of the system fan

Written By: Elizabeth Mazer



INTRODUCTION

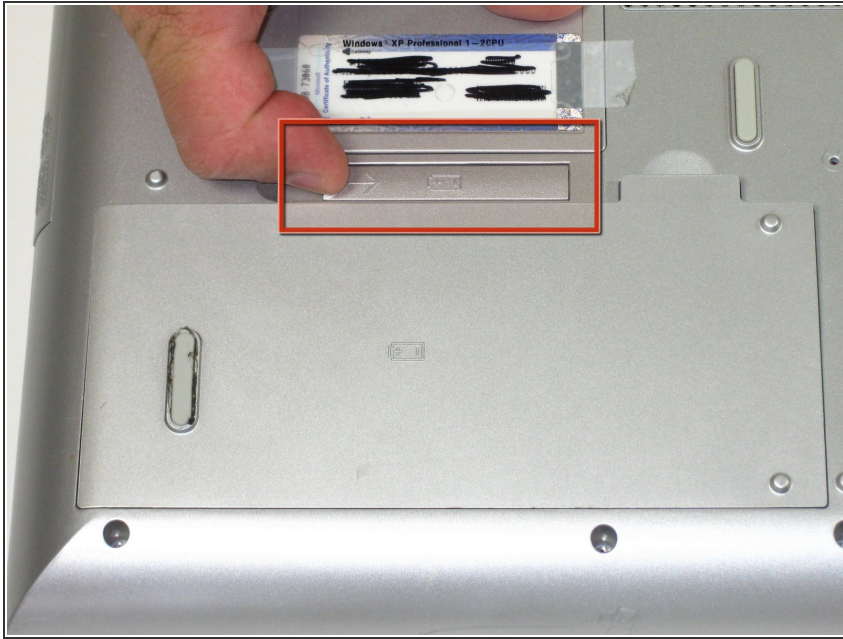
Removal of the system fan. when following the keyboard instructions there is no need to unplug it only fold it back to gain access to the fan.



TOOLS:

- [Phillips #0 Screwdriver](#) (1)
 - [Spudger](#) (1)
-

Step 1 — Battery



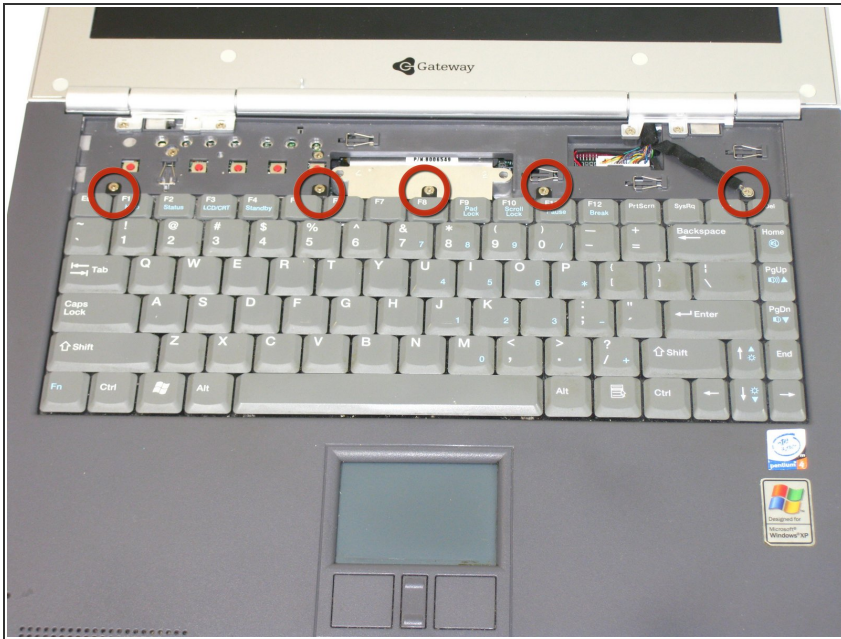
- Flip the laptop over. Slide the battery release tab to the right.

Step 2



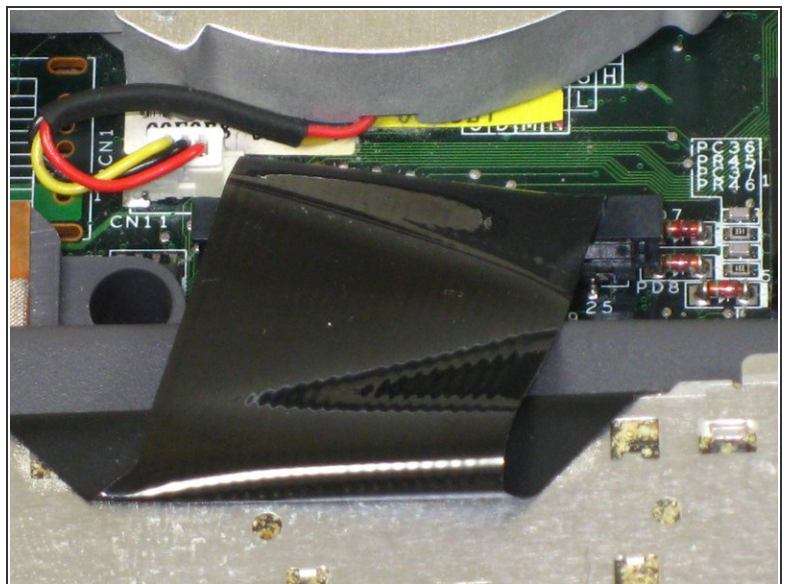
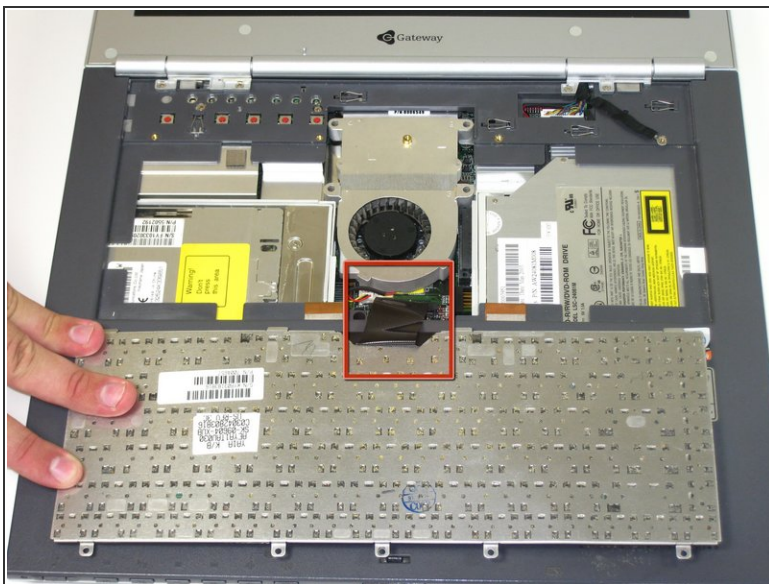
- Lift the battery out.

Step 3 — Keyboard



- Remove the 5 screws holding the keyboard in place.

Step 4



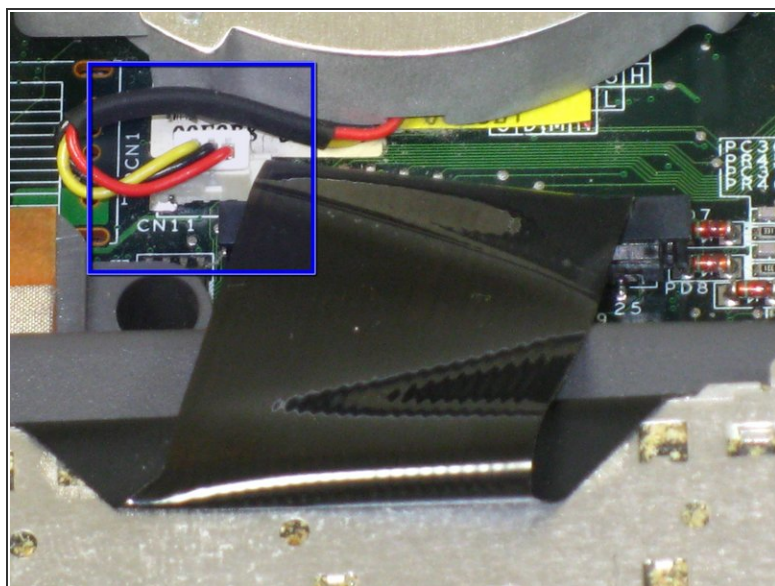
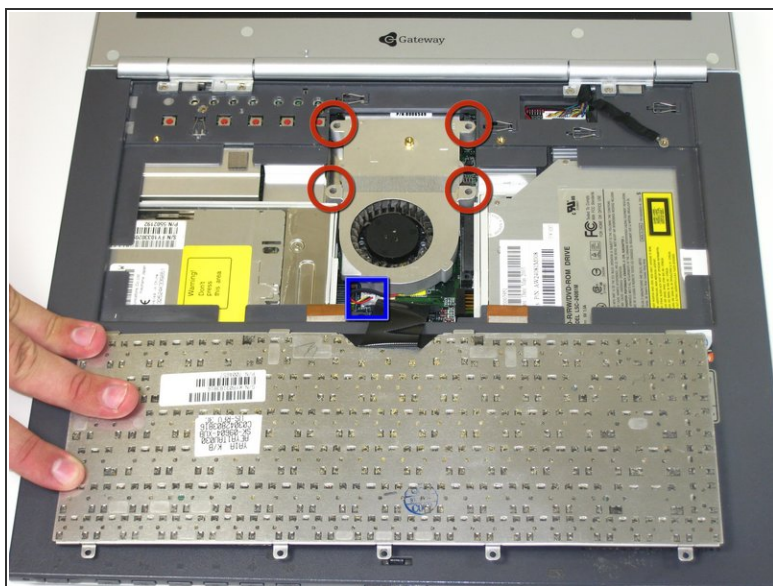
⚠ CAUTION: When lifting the keyboard out, do not lift keyboard up. Only fold back along the space bar edge.

⚠ DO NOT PULL the black cable by the ribbon section; only pull it by the connector itself.

- Follow the black ribbon cable to the connector and gently pull straight up.

This document was generated on 2019-09-23 07:53:47 AM (MST).

Step 5 — System Fan



- Unscrew the 4 captive screws.
- Unplug fan from the system and pull it out. The fan unit should slide forward before coming free.

To reassemble your device, follow these instructions in reverse order.