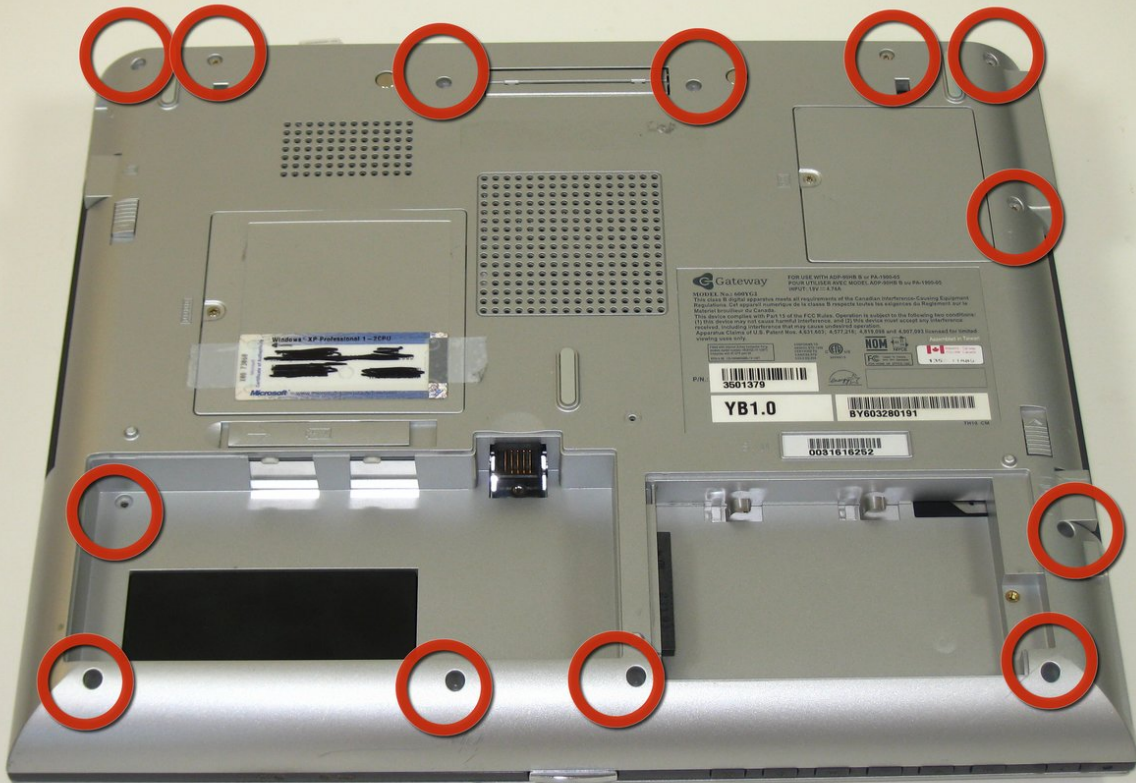




Gateway 600YG2 Top Case Replacement

removal of top case

Written By: Elizabeth Mazer



INTRODUCTION

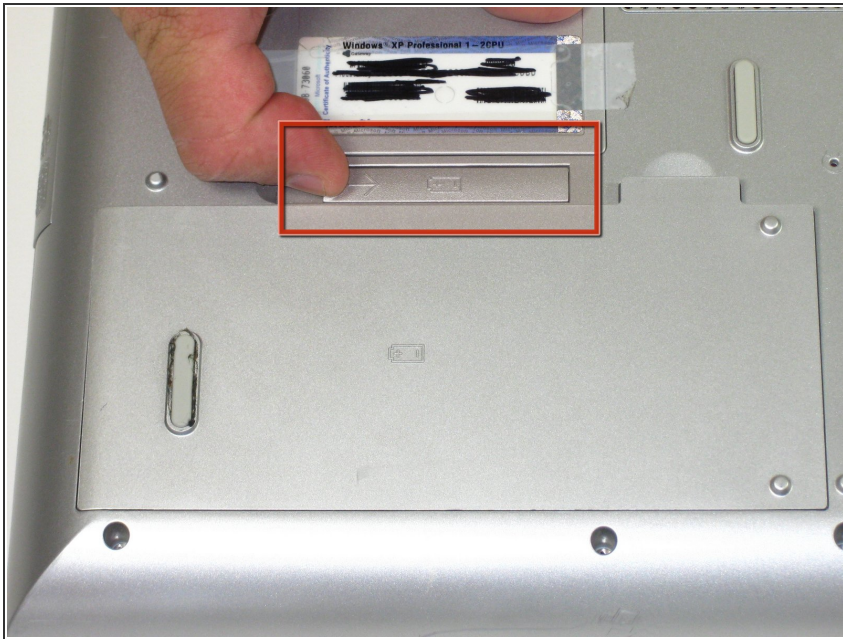
removal of top case



TOOLS:

- [Phillips #0 Screwdriver](#) (1)
 - [Spudger](#) (1)
-

Step 1 — Battery



- Flip the laptop over. Slide the battery release tab to the right.

Step 2



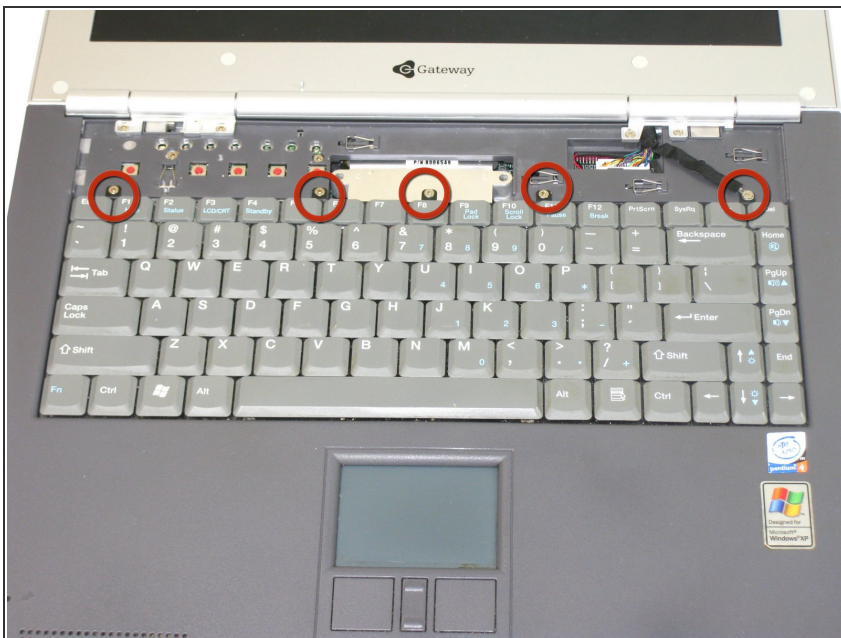
- Lift the battery out.

Step 3 — Power button panel



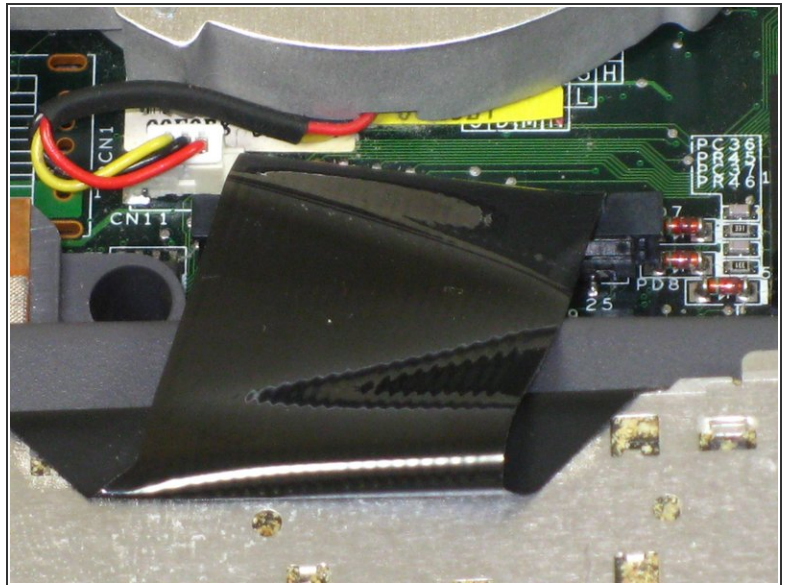
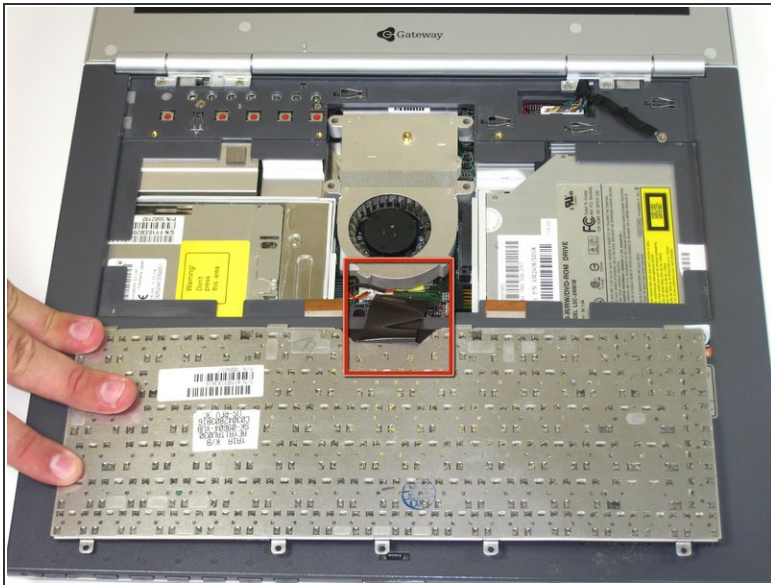
- Insert spudger between sysrq and ins keys.
- Gently lift power button panel from the right to left.

Step 4 — Keyboard



- Remove the 5 screws holding the keyboard in place.

Step 5



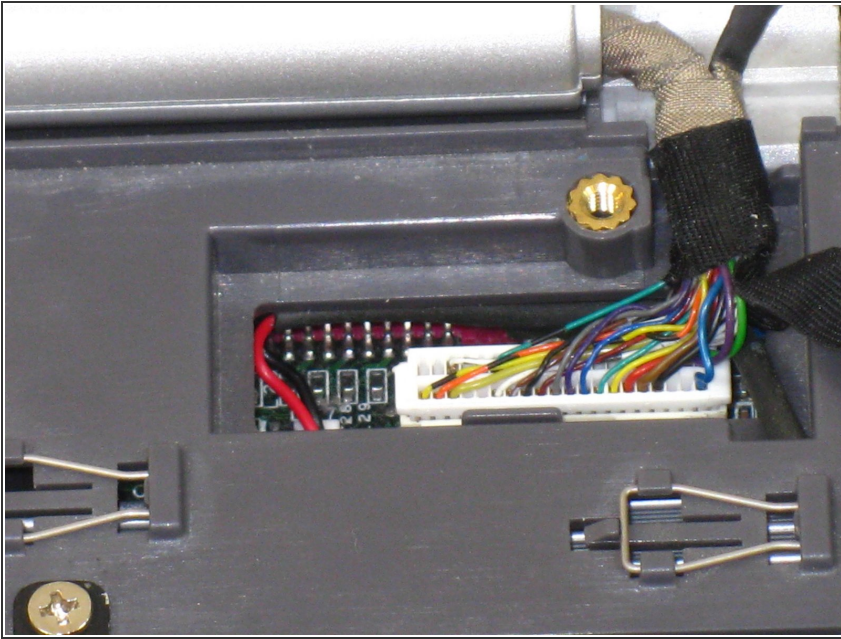
- ⚠ **CAUTION:** When lifting the keyboard out, do not lift keyboard up. Only fold back along the space bar edge.
- ⚠ **DO NOT PULL** the black cable by the ribbon section; only pull it by the connector itself.
- Follow the black ribbon cable to the connector and gently pull straight up.

Step 6 — LCD Display



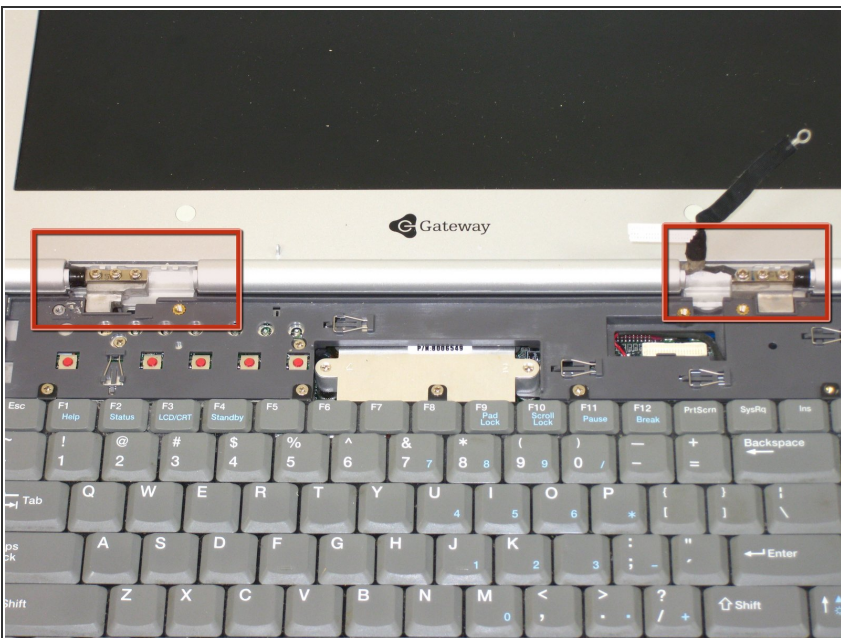
- Remove 5 screws.
- ⓘ 4 screws holding LCD hinge covers in place and 1 screw for LCD grounding.
- Remove hinge covers.

Step 7



- Gently unplug LCD from system board.

Step 8



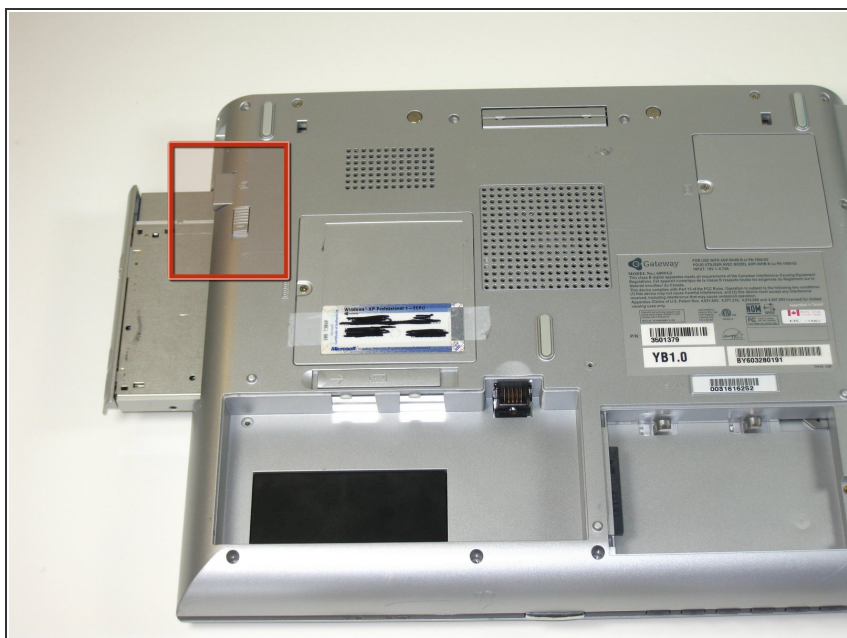
- Remove 6 screws holding LCD to hinge.

Step 9



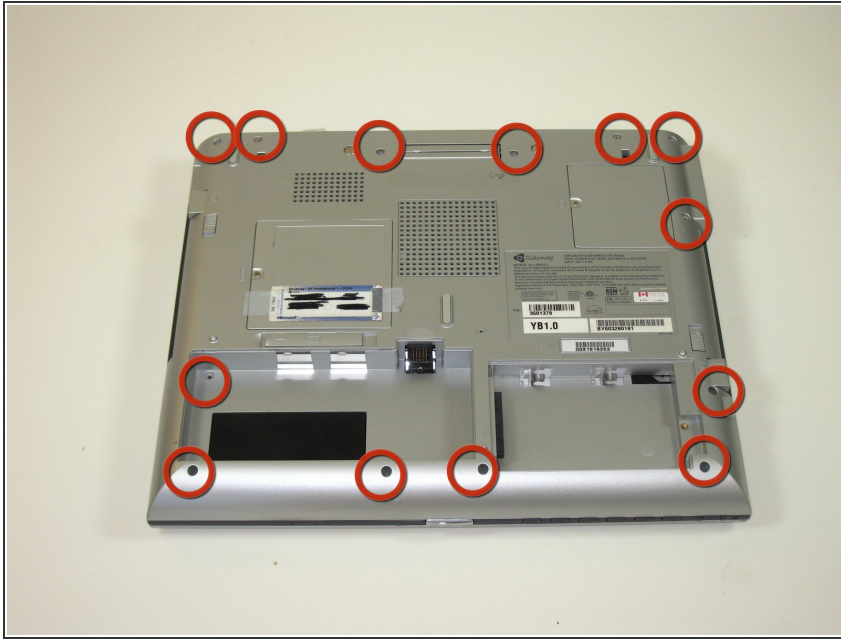
- Pull LCD away from case.

Step 10 — CD/DVD or Floppy drives



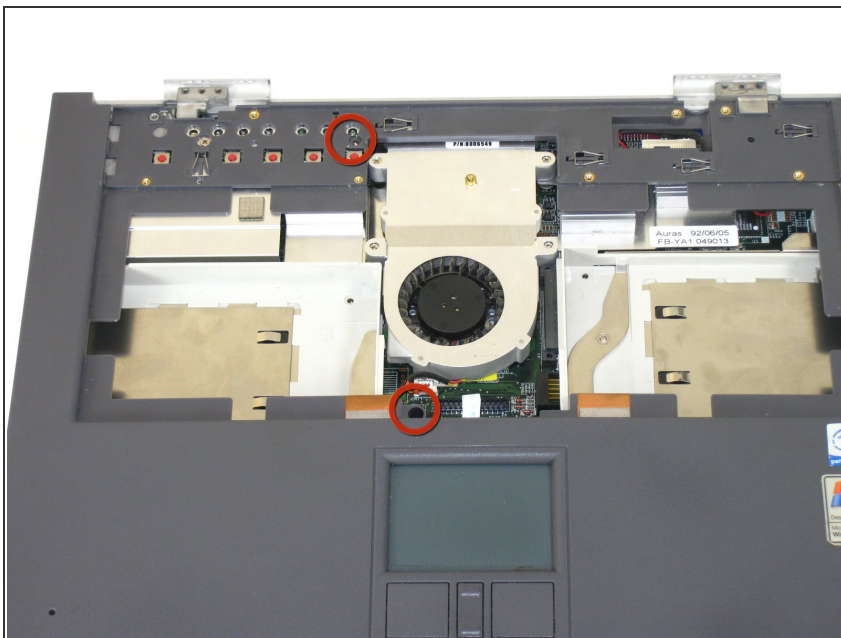
- Slide release and push button to eject drive
 - Pull drive out.
- ⚠ When reinserting drives be sure to insert back into original slot in order to avoid interface conflicts.

Step 11 — Top Case



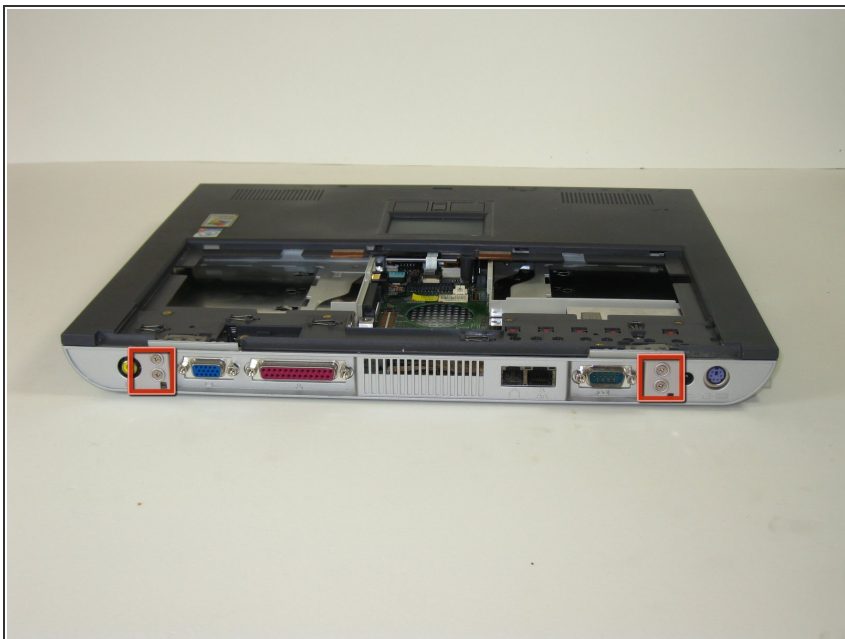
- Remove 13 screws from bottom of computer

Step 12



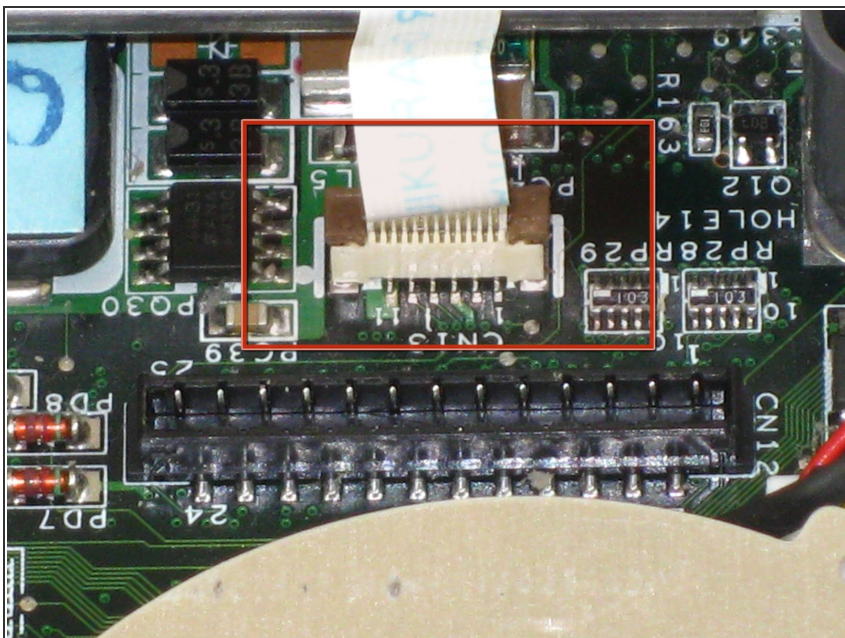
- Remove screws

Step 13



- remove 4 screws from back of case

Step 14



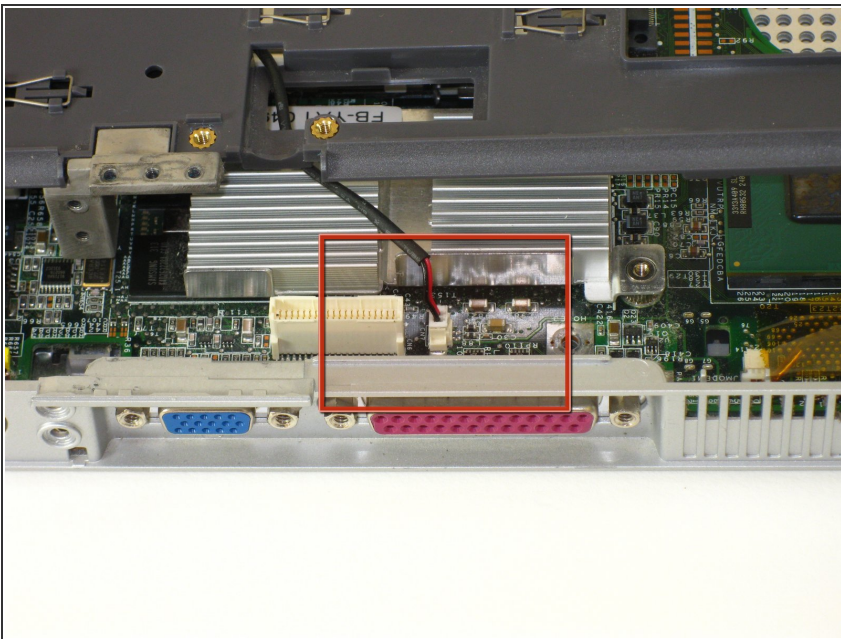
- ⚠ WARNING Failure to do this step will damage mouse pad ribbon.
- Lift plug holding mouse ribbon about 1/16 inch or until it stops
- remove ribbon

Step 15



- Insert spudger between upper and lower case at drive bay closest to battery.
- Carefully and slowly go around entire case unseating all plastic clips holding upper to lower.

Step 16



- Lift upper case free about 1/4 inch
- At rear of case is one last connecting wire. Unplug and remove upper case

To reassemble your device, follow these instructions in reverse order.