



Gateway 600YGR RAM Replacement

This replacement guide will walk you through the steps required to replace the RAM in your Gateway 600YGR.

Written By: Brent Bachelor



INTRODUCTION

This guide provides the step by step directions for removing and replacing damaged RAM Logic boards in a Gateway 600YGR. There are no prerequisite guides that need to be completed in order to use this guide. A Philips Head screwdriver and the PH 1 bit are required to complete the guide.



TOOLS:

- Philips Head Screwdriver Sized PH1 (1)
- Phillips #00 Screwdriver (1)



PARTS:

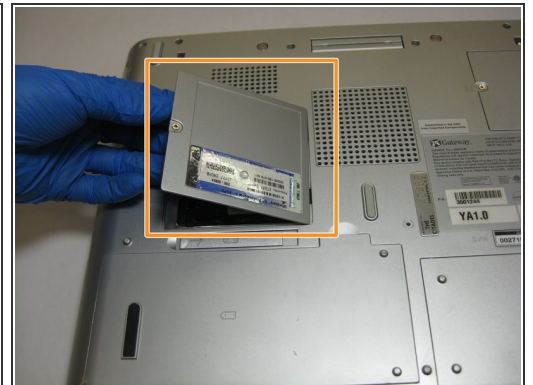
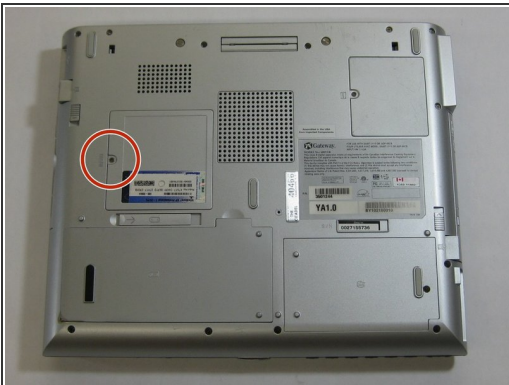
- PC2100 DDR SDRAM SODIMMs (RAM) (1)

Step 1 — RAM



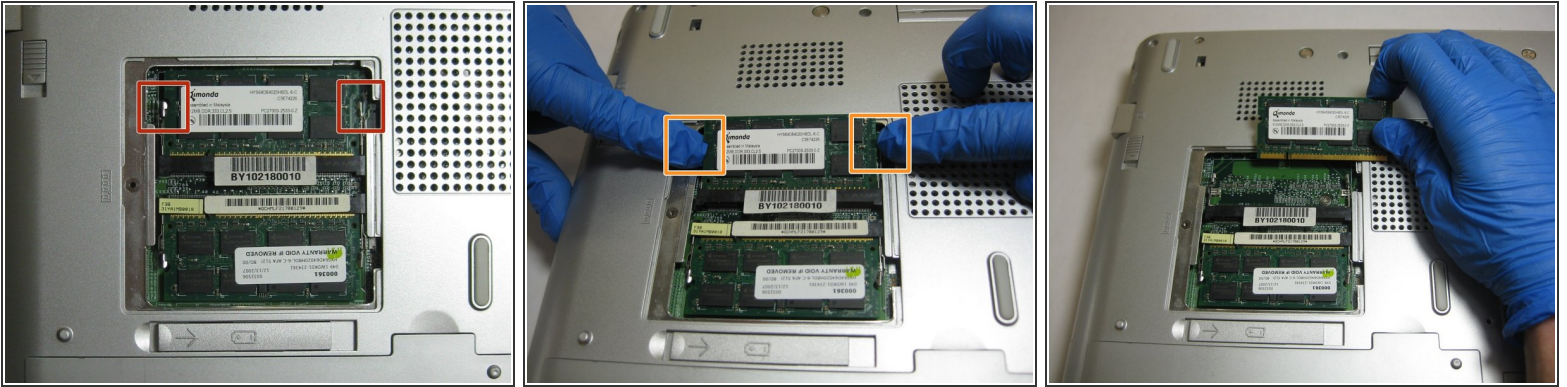
- Flip the computer over so that the bottom of your device is face up.

Step 2



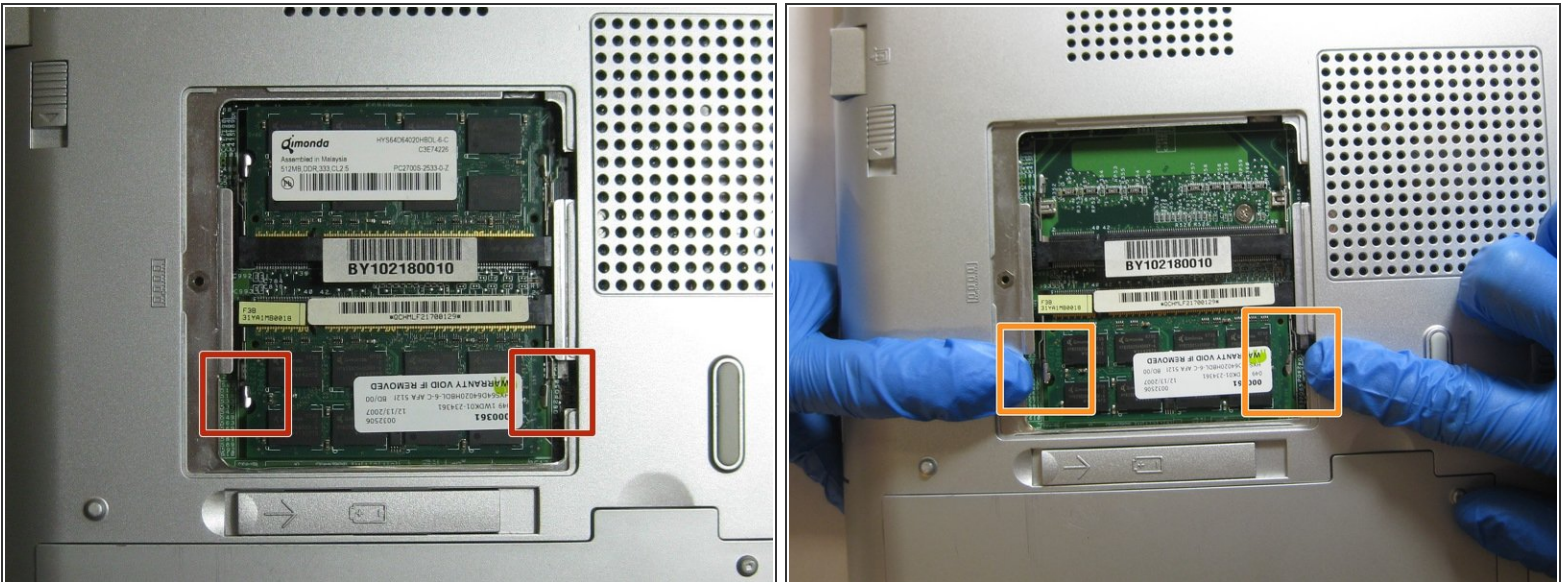
- Use a Philips head screwdriver and the PH1 bit to remove the indicated 5.35mm screw.
- Remove the cover panel.

Step 3



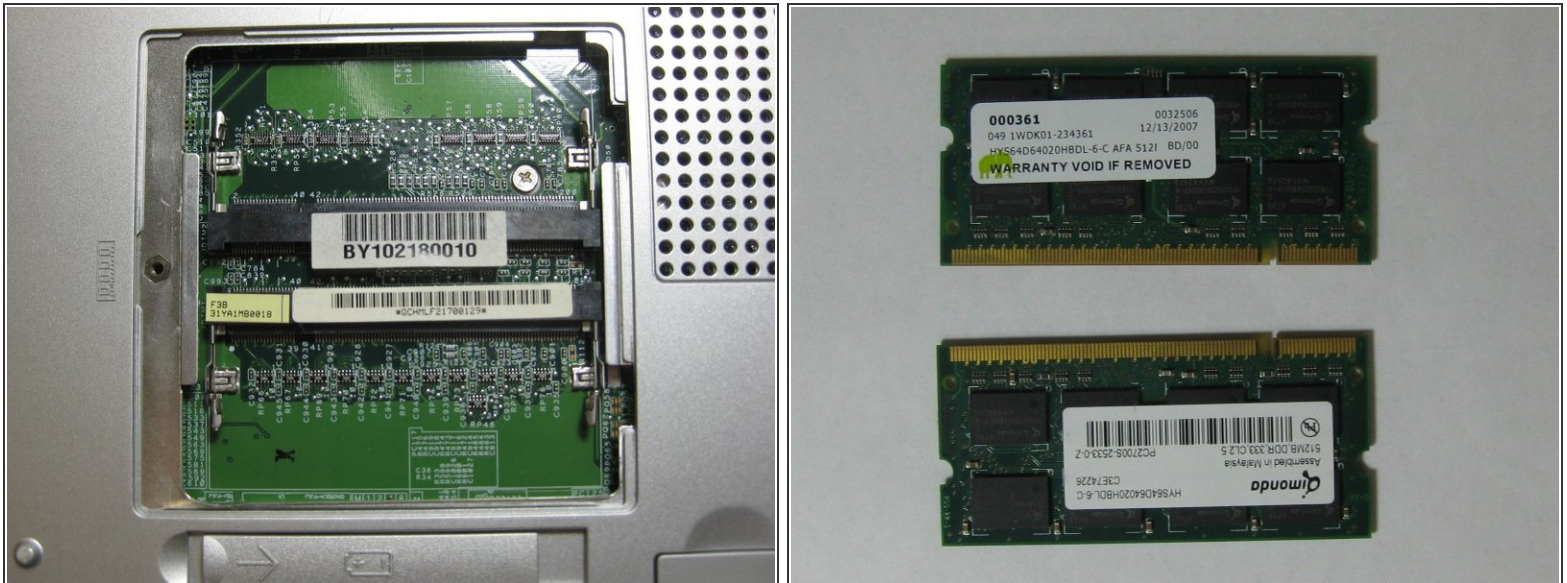
- Locate the indicated tabs on the edges of the top RAM board.
- Pull the tabs outward and the RAM board will release.
- Remove the RAM board.

Step 4



- Locate the indicated tabs on the edges of the bottom RAM board.
- Pull the tabs outward.
- Remove the RAM board.

Step 5



- You have now successfully removed the RAM boards.

To reassemble your device, follow these instructions in reverse order.