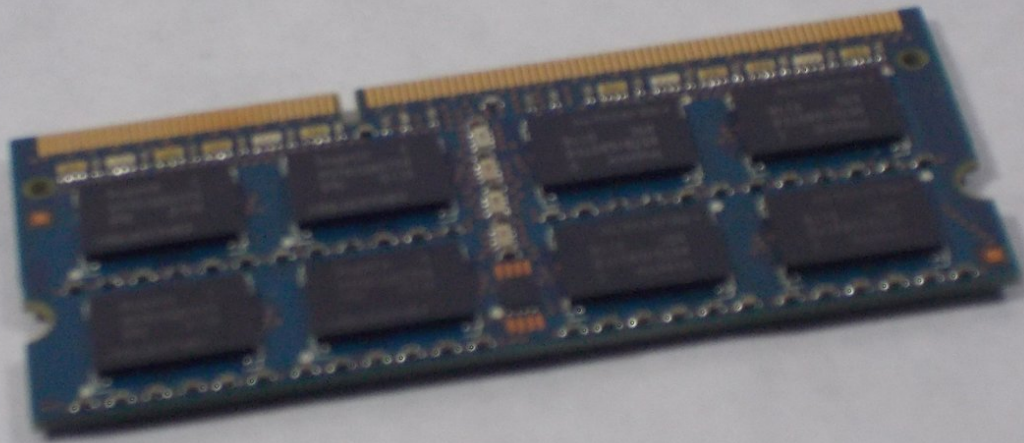




Gateway ID49C07U RAM Replacement

Written By: Patrick McGrail





TOOLS:

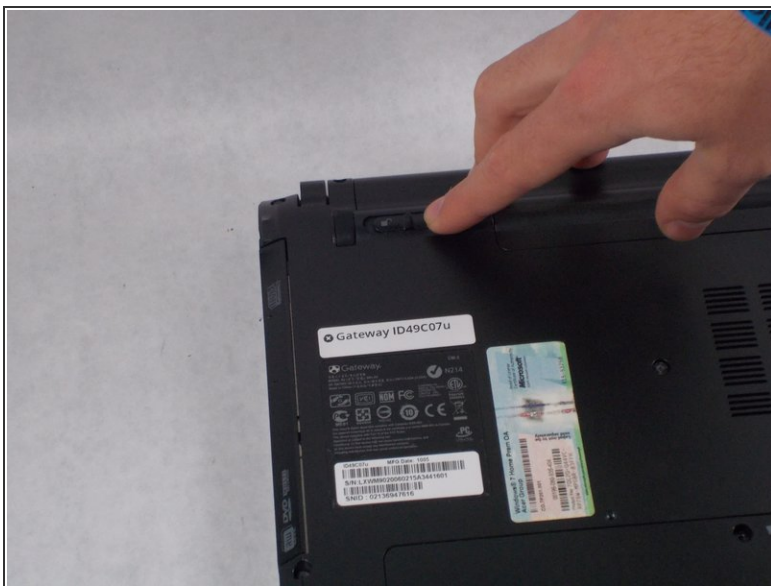
- [JIS Driver Set](#) (1)
-

Step 1 — Battery



- Turn the laptop over so the bottom of the device is facing upwards with the hinge facing away from you.

Step 2



- Locate the switch on the top left of the laptop labeled with a padlock symbol.
- Flip the switch in the direction of the unlocked padlock symbol.

Step 3



- Locate the switch that releases the battery and slide it to the right.

Step 4



- While holding the release switch to the right, pull the battery away from you.

Step 5 — RAM



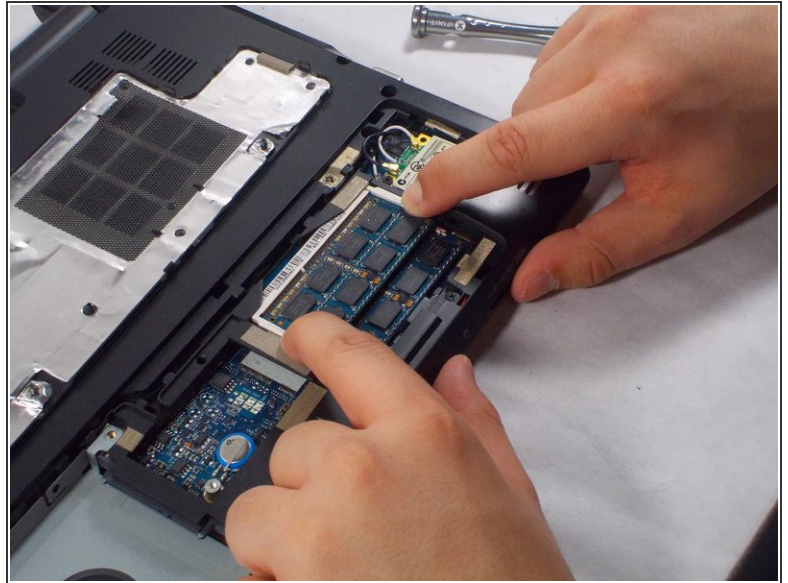
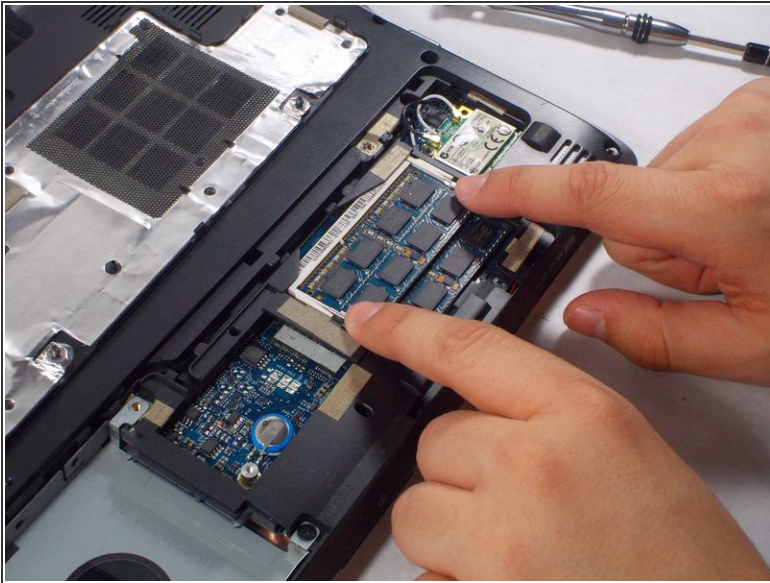
- Locate two screws securing back panel
- Unscrew both

Step 6



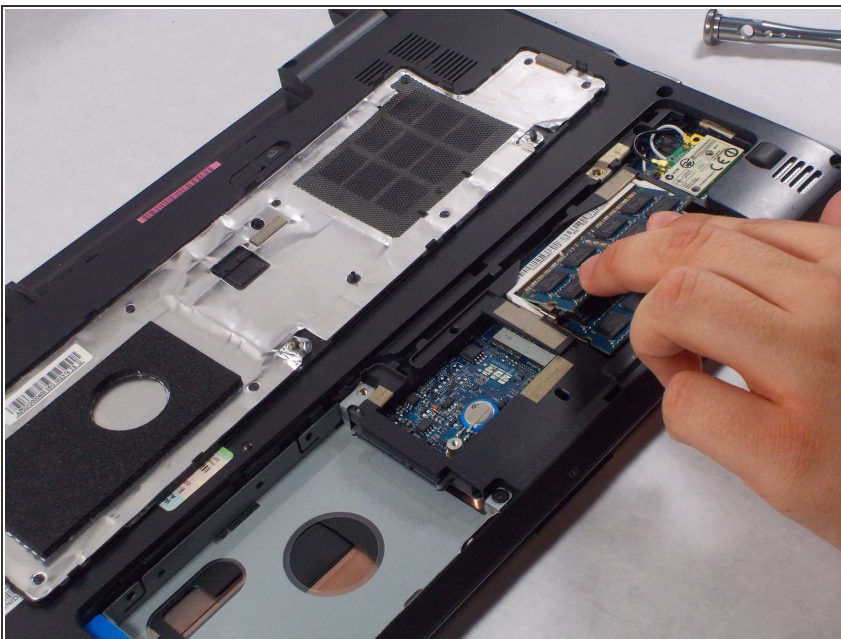
- Remove plate from device

Step 7



- Locate RAM
- Push tabs apart to release memory

Step 8



- Pull out memory

To reassemble your device, follow these instructions in reverse order.