



Gateway ID49C07U Screen Replacement

Written By: Ryan Howlett





TOOLS:

- [Phillips Head Screwdriver: Size PH1](#) (1)
 - [Tweezers](#) (1)
-

Step 1 — Battery



- Turn the laptop over so the bottom of the device is facing upwards with the hinge facing away from you.

Step 2



- Locate the switch on the top left of the laptop labeled with a padlock symbol.
- Flip the switch in the direction of the unlocked padlock symbol.

Step 3



- Locate the switch that releases the battery and slide it to the right.

Step 4



- While holding the release switch to the right, pull the battery away from you.

Step 5 — Screen



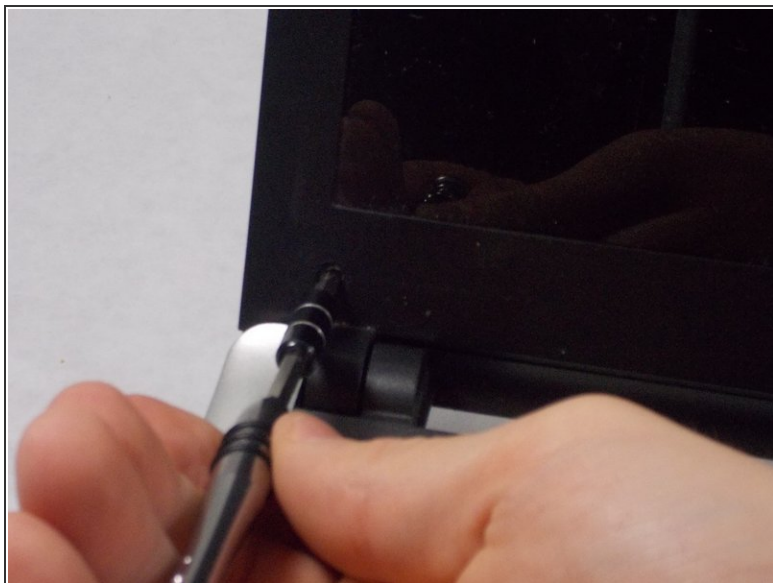
- Turn the laptop over and open.

Step 6



- Use the Small metal spudger to remove the small black screw covers in the bottom corners of the screen

Step 7



- Use the PH1 Screwdriver to remove the screws

Step 8



- Use the small metal spudger to start separating the front plastic cover from the back plastic cover

Step 9



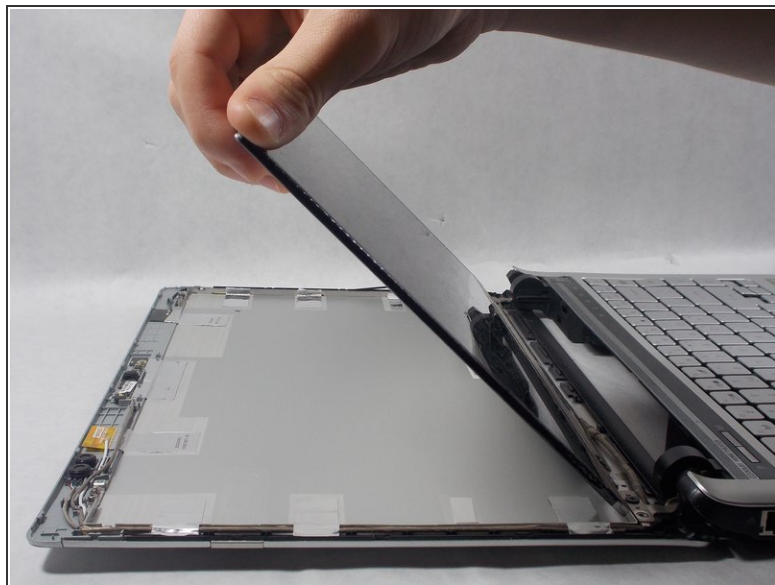
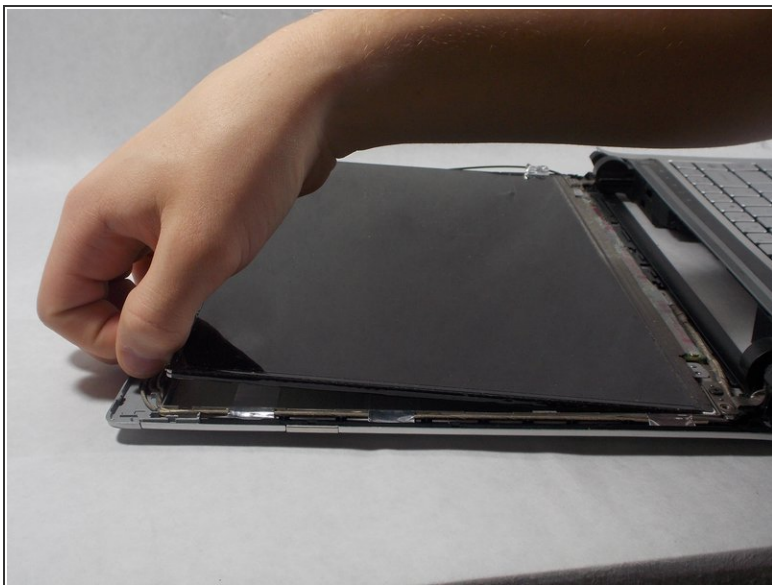
- Once there is enough room for you to fit your hand underneath the top plastic cover you can start peeling it back. It will make a lot of popping noises as it unclips when you separate it.

Step 10



- Once the plastic cover is off locate the 4 screws in the corners of the screen and unscrew them

Step 11



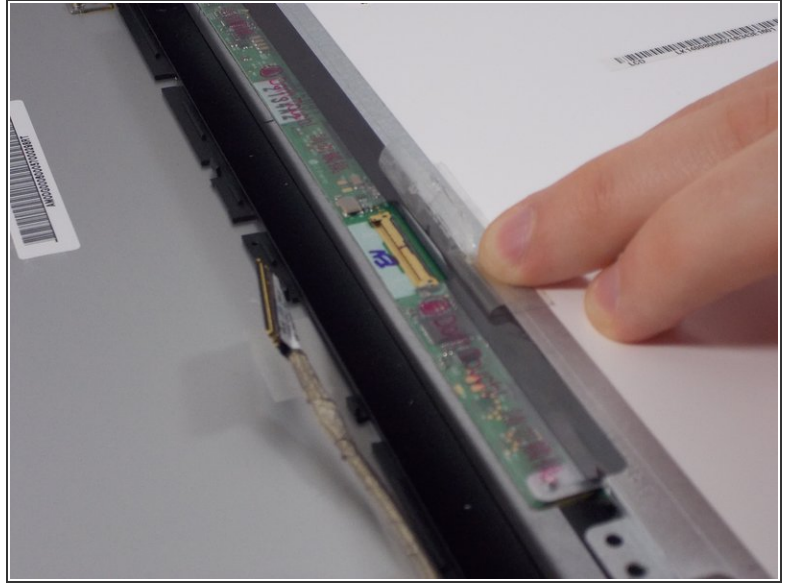
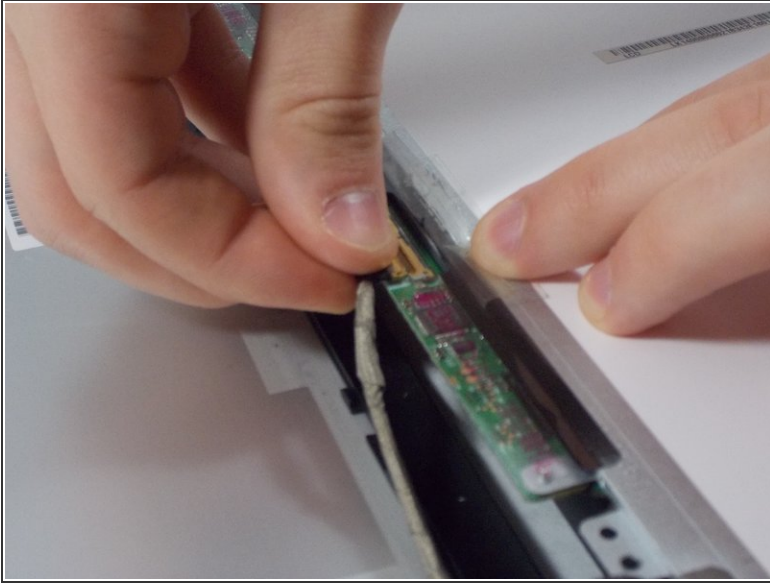
- After the screws are out gently flip the screen over onto the keyboard

Step 12



- Use the tweezers to peel back the tape over the wire connector on the bottom of the screen

Step 13



- Hold the tape back with one hand and pull the connector out

To reassemble your device, follow these instructions in reverse order.