



Gateway KAV60 LT2016U Cooling Fan Replacement

Gateway KAV60 LT2016U cooling fan replacement.

Written By: Brandon Bowman



INTRODUCTION

Once you've extracted the motherboard, replacing the cooling fan only entails removing a few screws.

TOOLS:

- [Phillips #0 Screwdriver](#) (1)
 - [iFixit Opening Tools](#) (1)
-

Step 1 — Battery



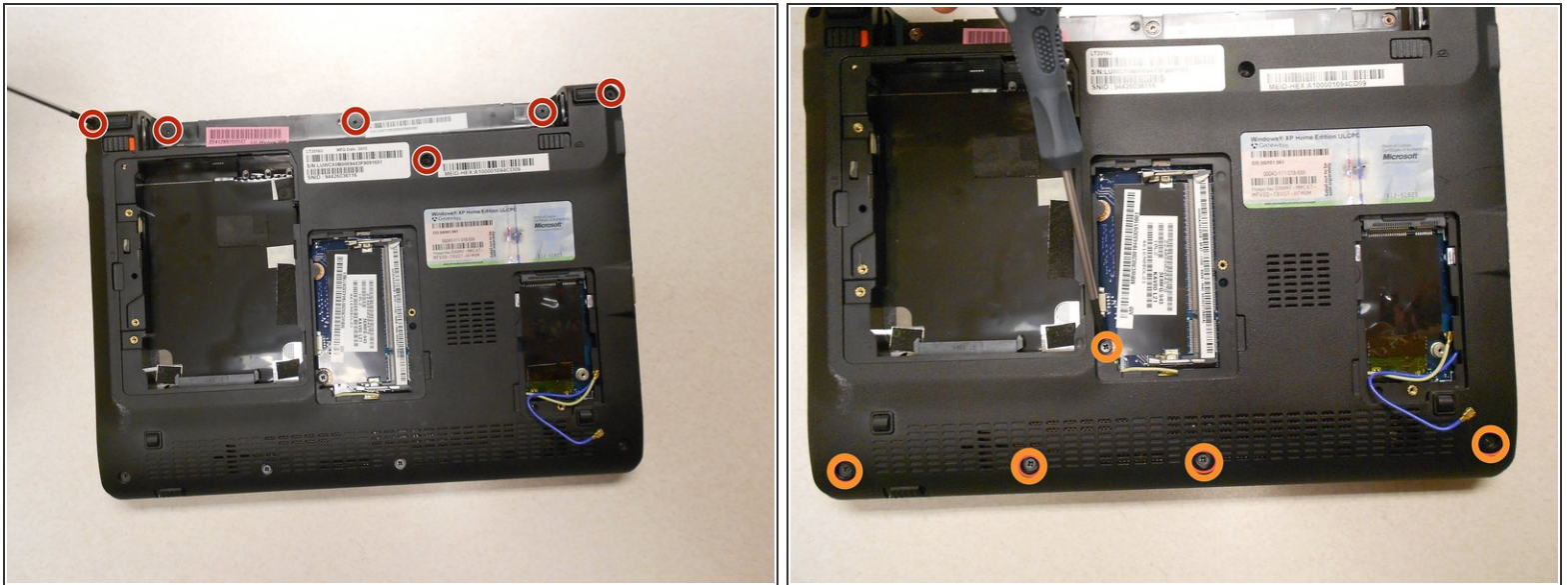
- Unlock the tab located in the top left corner of the netbook.
 - The red tab indicated that the battery has been properly unlocked.
 - Remove the battery.
- i** When working with electronics, it is always wise to remove the power source before taking the device apart.

Step 2 — Upper Cover



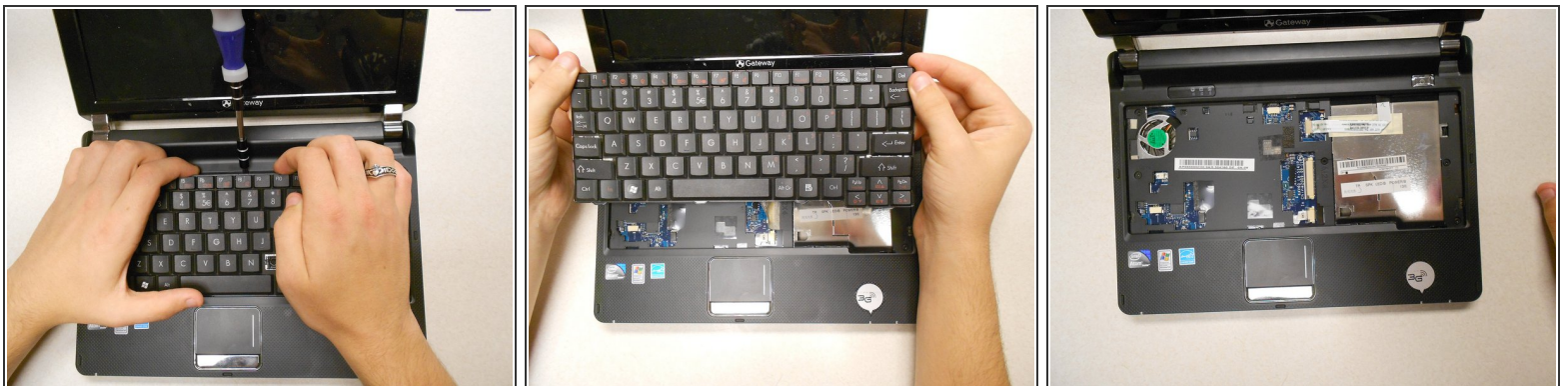
- !** Make sure the RAM, hard drive, and WiFi card have been removed from the computer before trying to take off the cover so they are not damaged in the process.

Step 3



- Remove six (6) 5mm screws, two (2) 17.5mm screws, and three (3) 2.5mm screws from the back, using the Phillips #0 screwdriver, as marked here.

Step 4



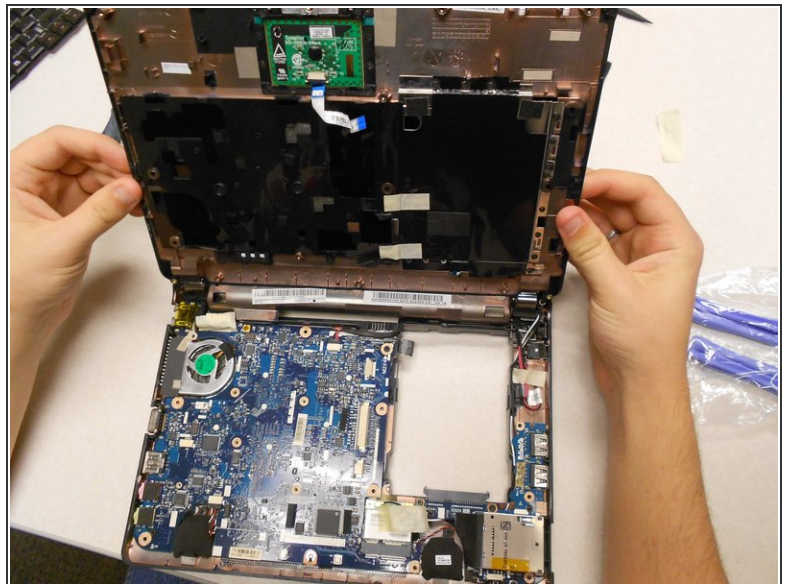
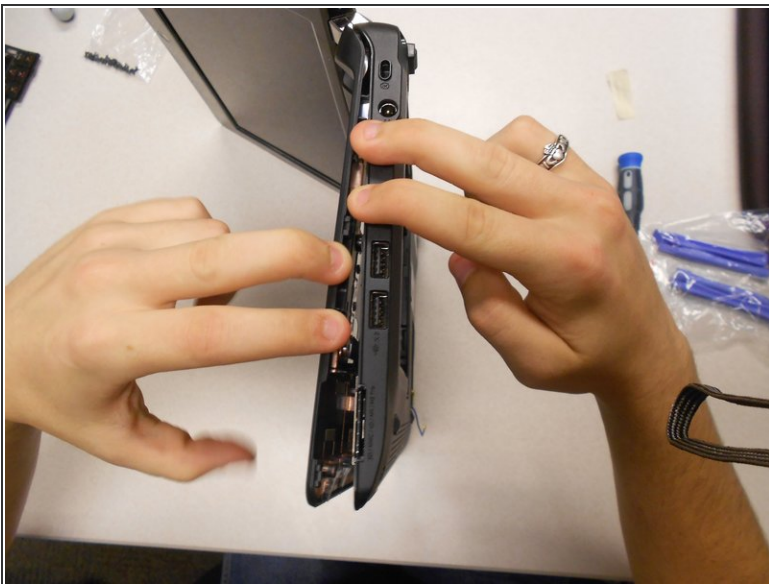
- Pry up the keyboard using a spudger or plastic opening tool in the exact location shown in the photograph.
⚠ Don't use a screwdriver as a pry tool as shown in this example.
- Carefully disconnect the keyboard ribbon cable from the motherboard, and remove the keyboard.

Step 5



- Remove the five (5) 5mm screws shown here using the Phillips #0 screwdriver.

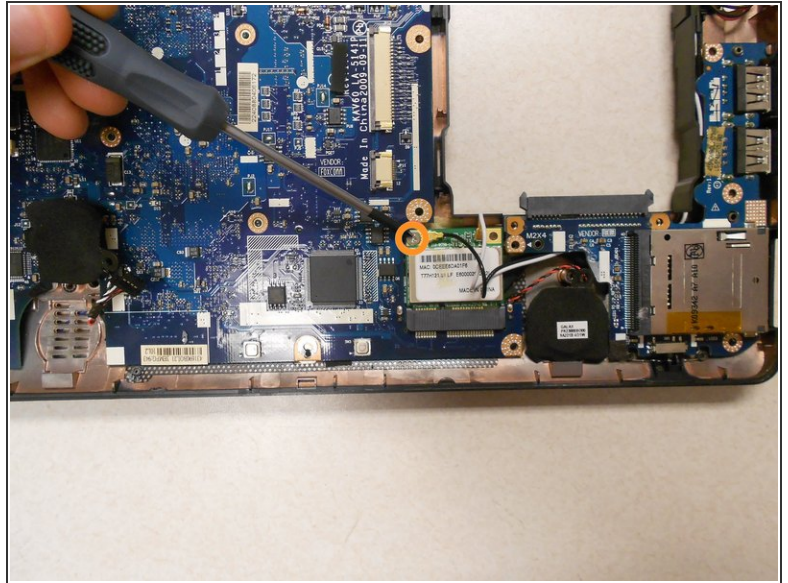
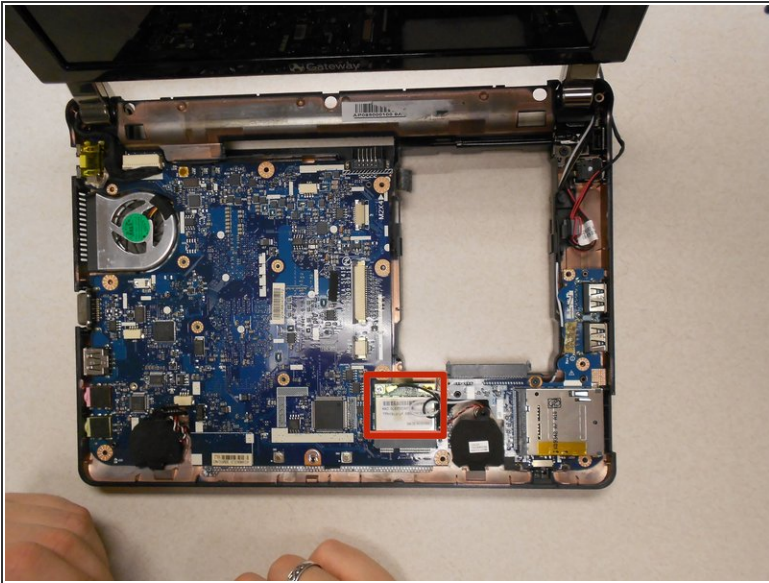
Step 6



- Separate the upper cover from the back cover. It is possible to do this without a tool, but you may also use a plastic opening tool for added leverage.
- Be careful to keep even pressure all the way around the cover so that it is not bent beyond repair.
- Carefully disconnect two ribbon cables to complete the separation of the upper cover.

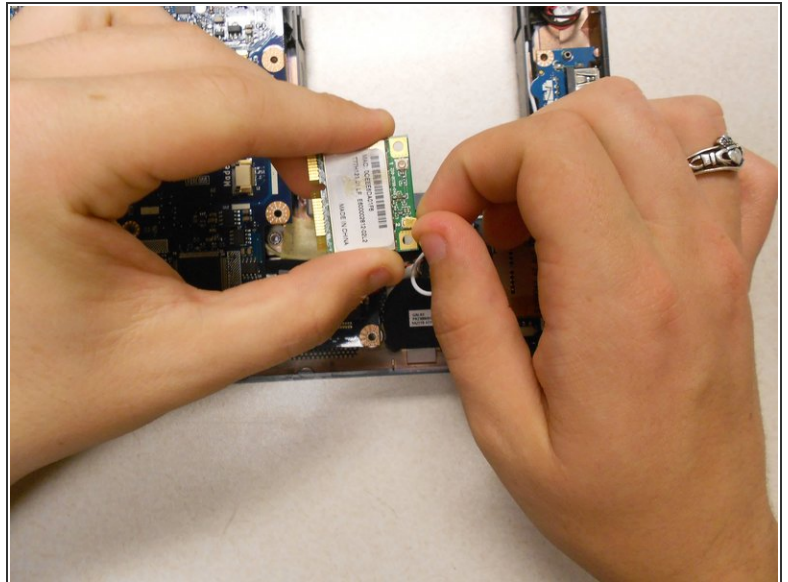
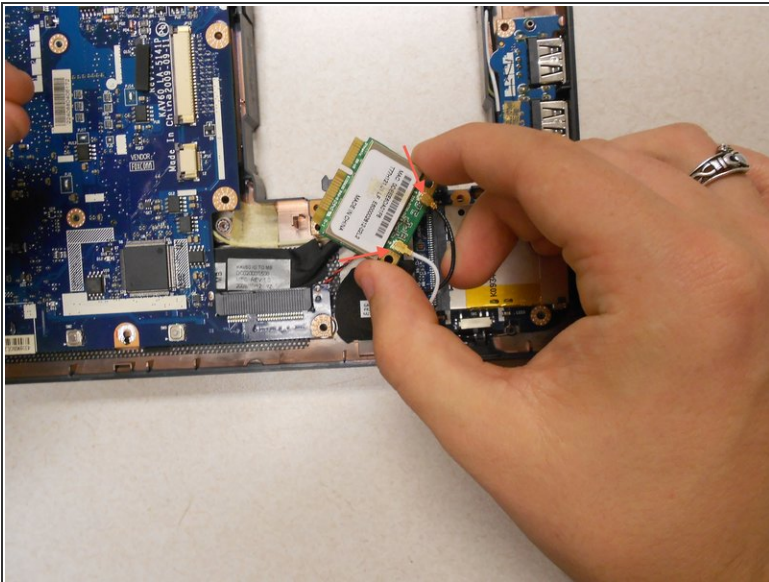
This document was generated on 2019-09-22 12:04:49 PM (MST).

Step 7 — WiFi Card



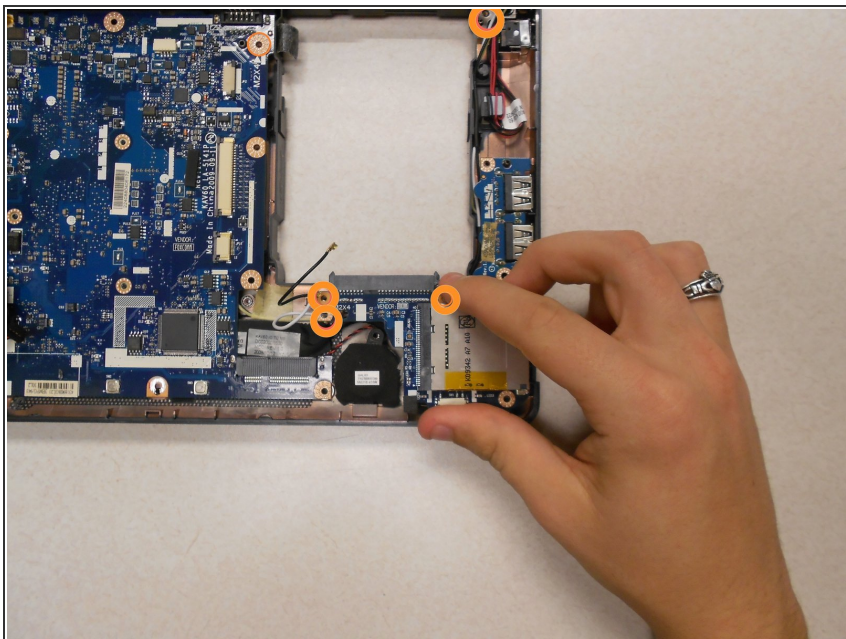
- The WiFi card is shown here.
- Remove the one (1) 5mm screw holding the card to the motherboard using a Phillips #0 screwdriver.

Step 8



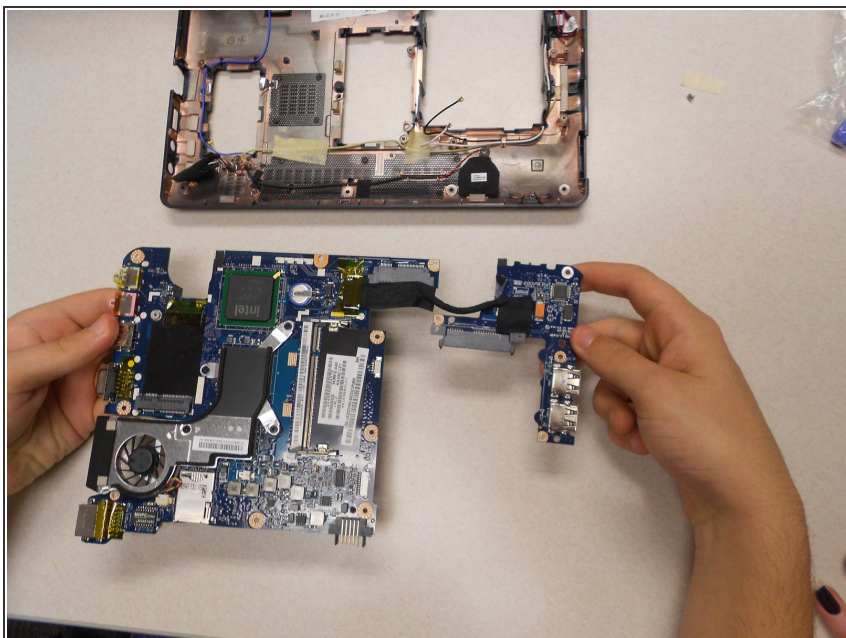
- Disconnect the wires on the WiFi card. This can be done easily by applying pressure to the connections until they pop off of the card.

Step 9 — Motherboard



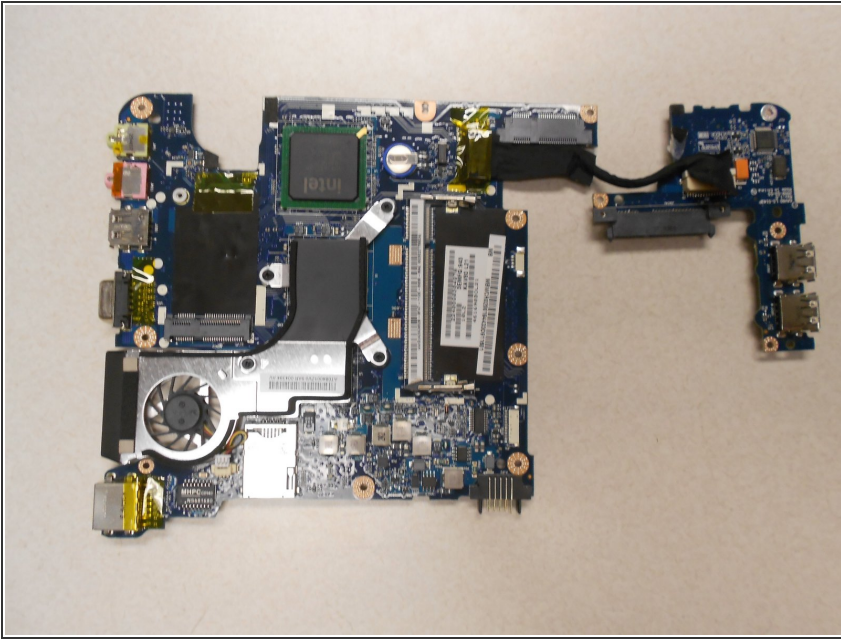
- Using a Phillips #00 screwdriver, remove the four (4) 5mm screws holding the motherboard in place.

Step 10



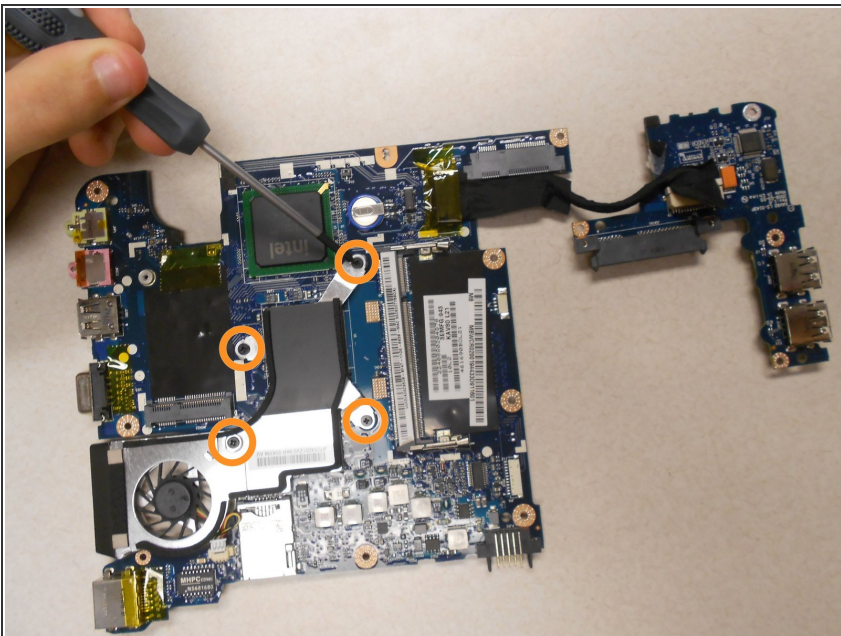
- Remove the motherboard by lifting it gently from the bottom cover.
- ⓘ This image is the rear view of the motherboard.

Step 11 — Cooling Fan



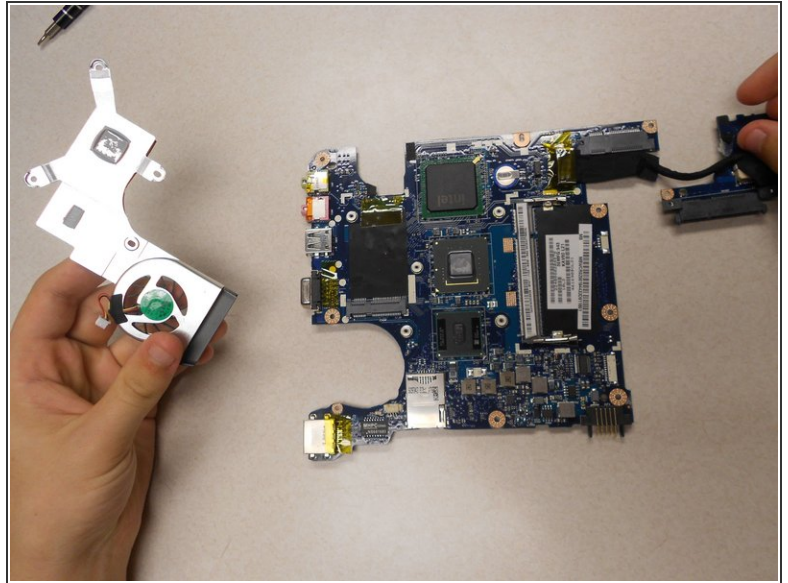
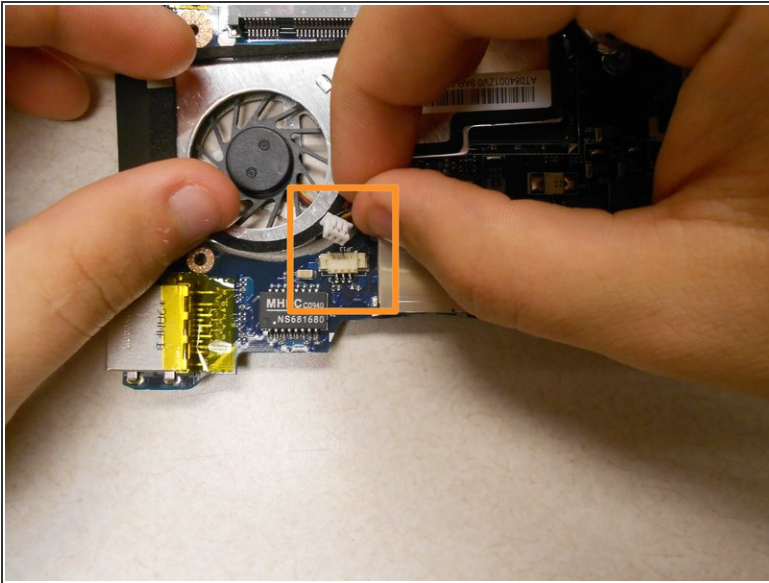
- Begin with the motherboard of the computer, as shown here.

Step 12



- Using the #00 Phillips head screwdriver, remove all four (4) screws marked here.

Step 13



- Gently disconnect the fan cable from the motherboard by pulling on the connection until it slips out.
- The fan should then be fully disconnected from the motherboard and ready for replacement.

To reassemble your device, follow these instructions in reverse order.