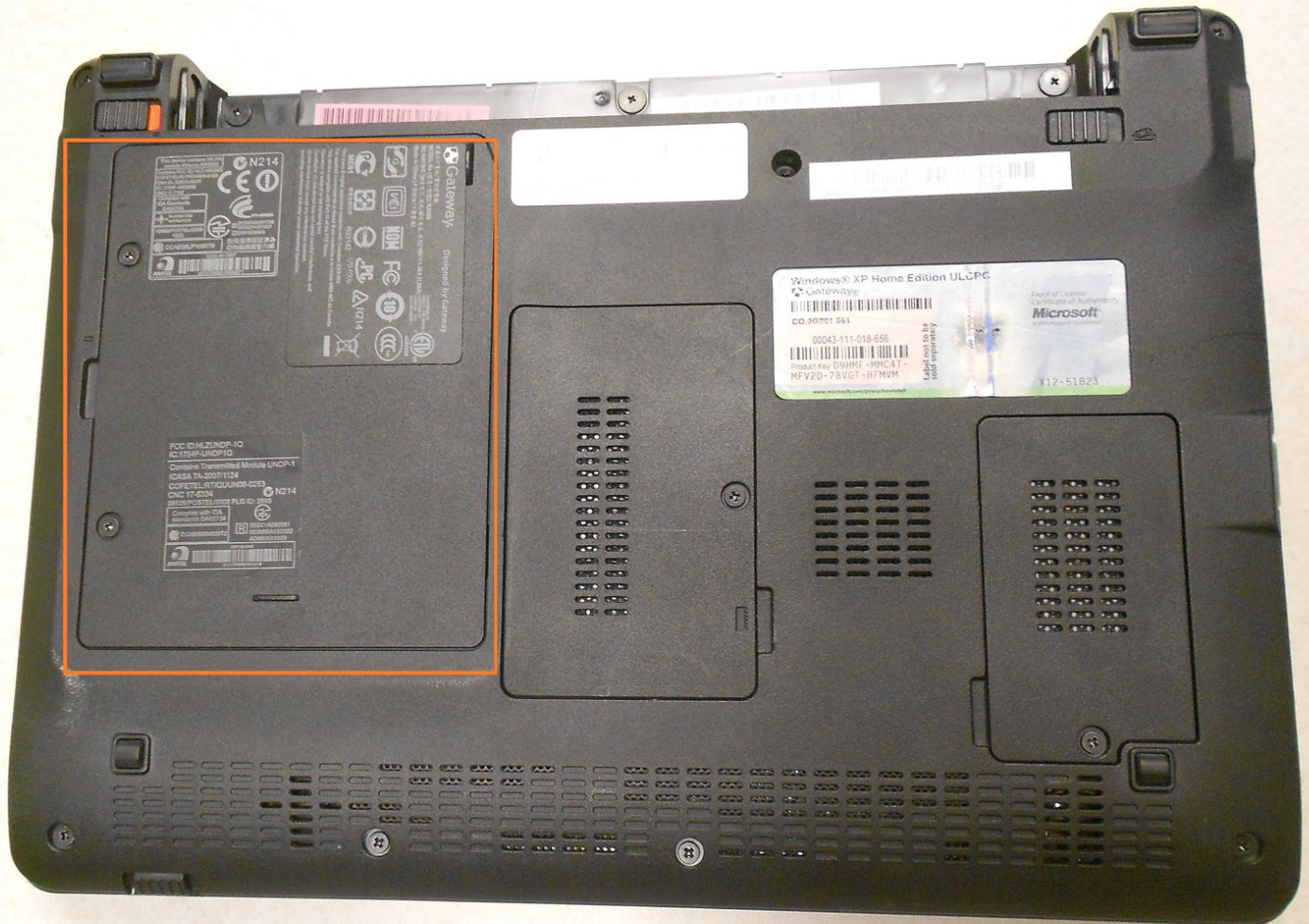




Gateway KAV60 LT2016U Netbook Hard Drive Replacement

Written By: Kyle



INTRODUCTION

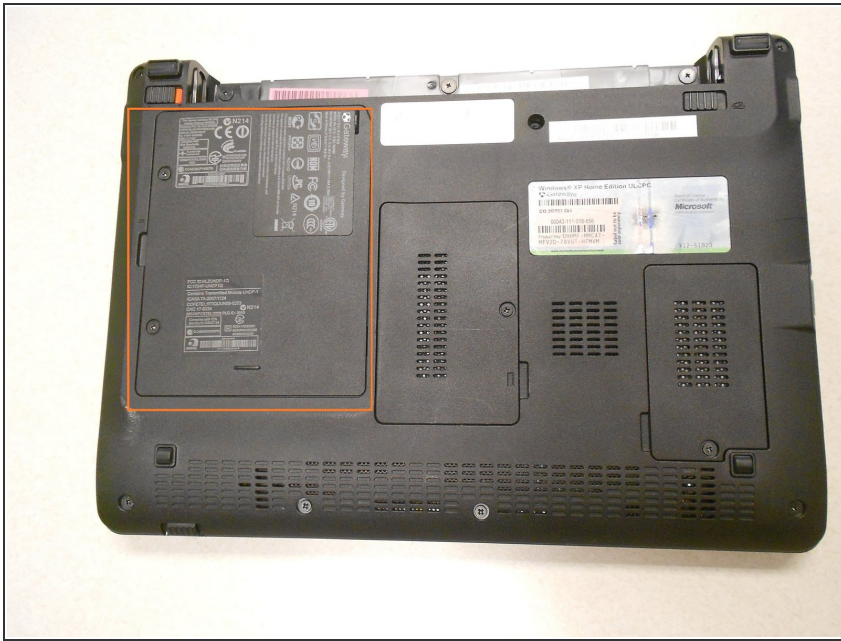
This is a guide on how to remove and replace the hard drive on the Gateway KAV60 LT2016U Netbook. Reasons for removal include:

- Current hard drive no longer works
- Hard drive upgrade

TOOLS:

- [Phillips #0 Screwdriver](#) (1)
 - [iFixit Opening Tools](#) (1)
-

Step 1 — Hard Drive



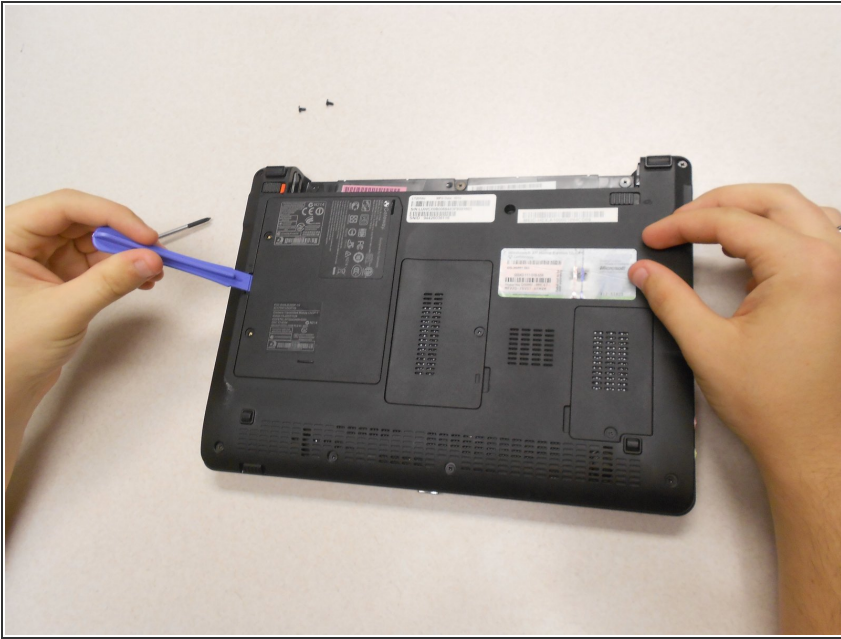
- The hard drive is located on the bottom of the laptop on the left hand side.

Step 2



- Remove the two screws on the cover with the specified screwdriver.

Step 3



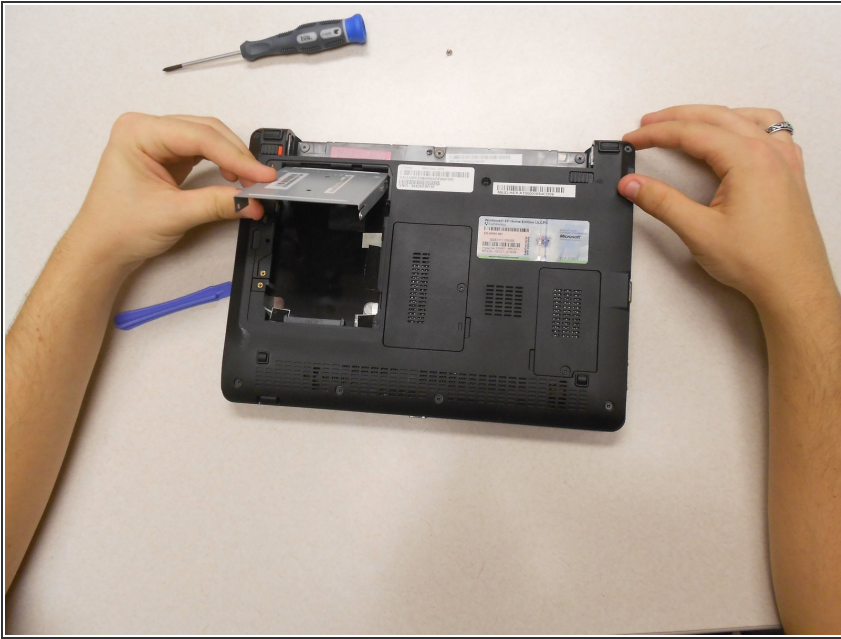
- Lift off the cover with the plastic opener.

Step 4



- Remove the one screw holding the hard drive in place with the same screw driver.

Step 5



- Slide the hard drive up and remove it from the laptop.

To reassemble your device, follow these instructions in reverse order.