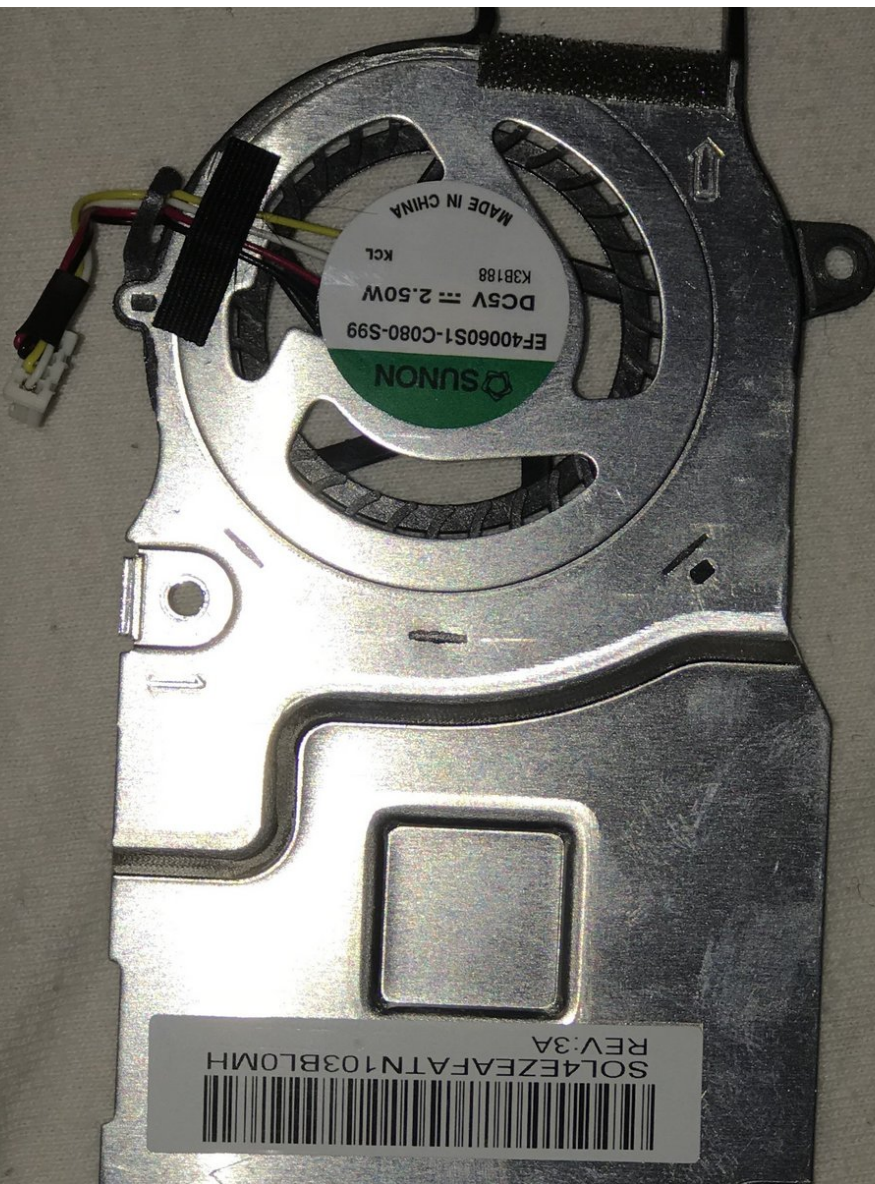




# Gateway LT41P10u Cooling Fan Replacement

This guide will show the tools and procedure necessary to remove and replace the cooling fan on the Gateway LT41P10u laptop.

Written By: Patrick Raposo



---

## INTRODUCTION

This guide will provide a full walk though of the cooling fan replacement for LT41P10u.

---



### TOOLS:

- [Spudger](#) (1)
  - [Phillips #0 Screwdriver](#) (1)
-

## Step 1 — Battery



- Place the laptop upside down on a flat surface so you can see the battery.

## Step 2



- Pull the two marked tabs towards the outside of the computer to unlock them.

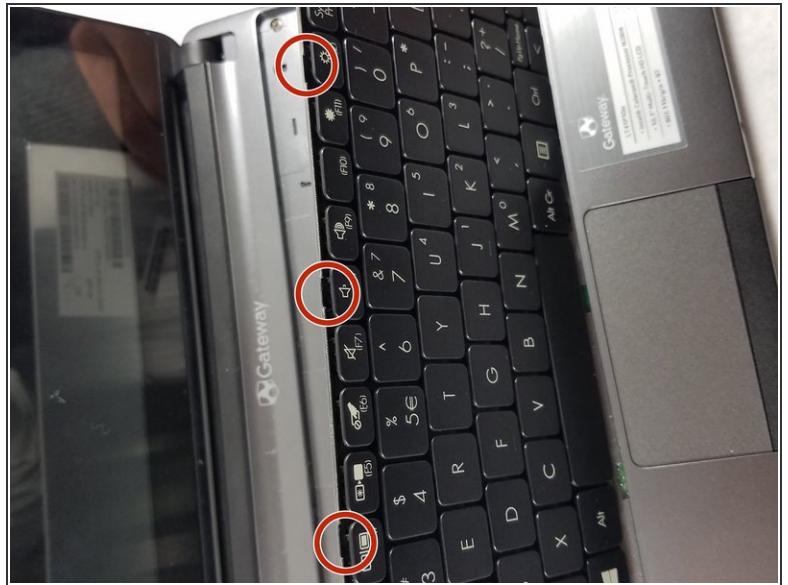
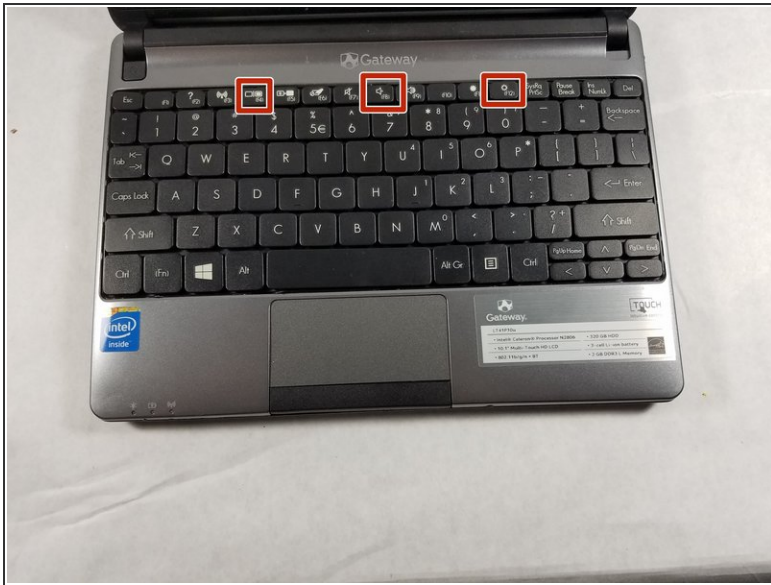


## Step 3



- While keeping both of the tabs in the unlocked position, grab the battery and pull outwards, until the battery slides out from the rest of the computer.

## Step 4 — Keyboard



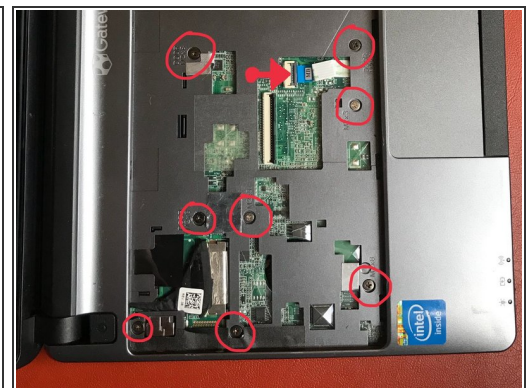
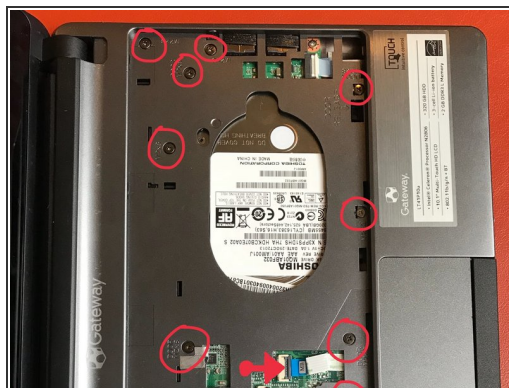
- Once the battery is removed, flip the laptop over and open it up so you can see the keyboard.
- Underneath the f4, f8, and f12 keys there are indents (see the second image) to fit a spudger or plastic opening tool to pop the keyboard off.
- Once you find an indent with your spudger, carefully move it so the top of the keyboard comes away from the rest of the computer, followed by the bottom of the keyboard.

## Step 5



- Once you pull the keyboard off, you will see a ribbon wire connecting the keyboard to the rest of the laptop.
- To detach the keyboard from the rest of the computer, you have to unlock the ribbon by pulling up on the small black lock keeping the ribbon from being removed. You won't have to pull very hard, so be gentle to avoid damaging it.
- Once the ribbon is disconnected from the computer, you are able to pull the ribbon out from underneath the lock, and then pull the keyboard away.

## Step 6 — Track Pad



- Remove screws from back plate using phillips screwdriver.
- After removing the back screws use same phillips screwdriver to remove all screws from top plate. (see images 2 and 3, bottom screws from image 2 overlap with top screws from image 3.)
- Once all screws are removed from top and bottom plates disconnect cable ribbon indicated by a red arrow in images 2 and 3.

This document was generated on 2020-03-18 12:17:44 PM (MST).

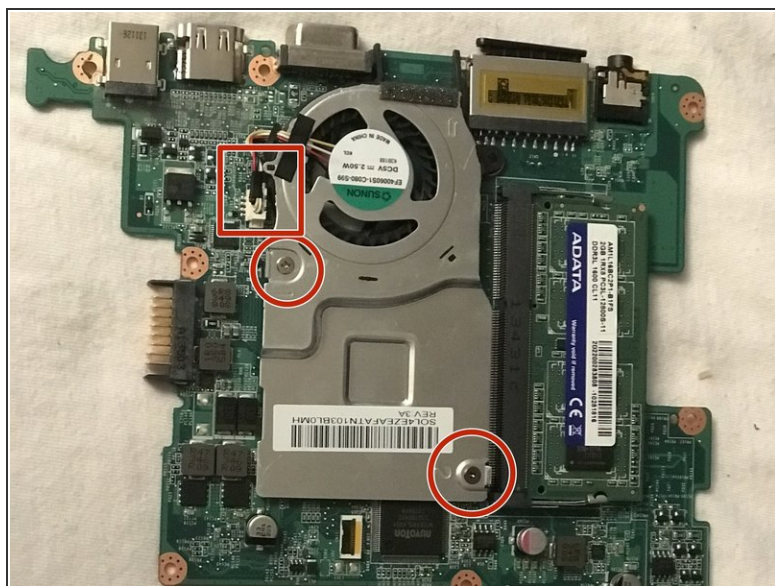
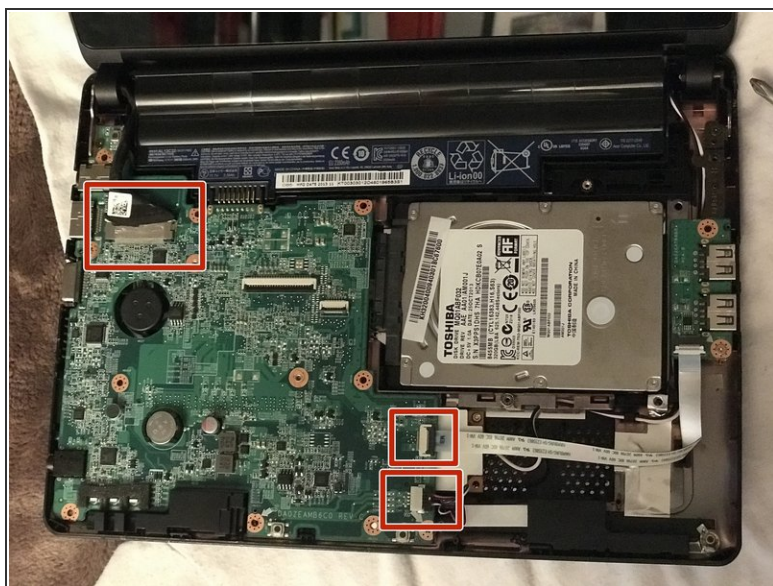


## Step 7



- Carefully remove plate.
- Track pad is located on the under side of the plate indicated by image 2.
- To replace track pad you must replace the entire plate. (Track pad is permanently attached this plate.)

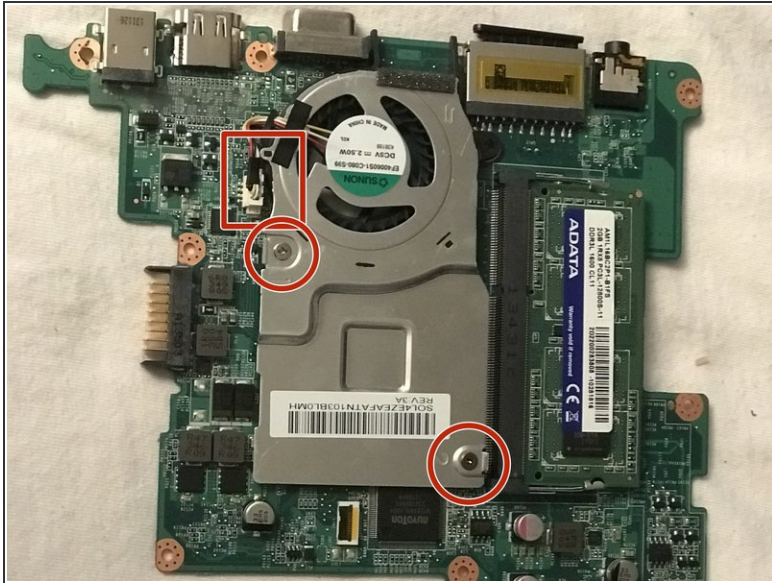
## Step 8 — Cooling Fan



- By hand, remove the top left tape in order to free the tab underneath.
- Remove the two small tabs at the bottom middle of the laptop and the whole board will be free.
- The board may now be removed from the laptop



## Step 9



- Remove the wiring connector by hand or with the help of a flathead screwdriver if necessary.
- Remove both screws with a philips head screwdriver.
- The cooling fan is now completely removed and may be replaced with new parts.

To reassemble your device, follow these instructions in reverse order.