



Gateway LT41P10u Monitor Replacement

Removal of monitor

Written By: Michael Smith



INTRODUCTION

This is the guide for complete removal of the Gateway LT41P10u monitor. **When removing monitor handle with care to avoid possibly cracking the screen.**

TOOLS:

- [Spudger](#) (1)
-

Step 1 — Battery



- Place the laptop upside down on a flat surface so you can see the battery.

Step 2



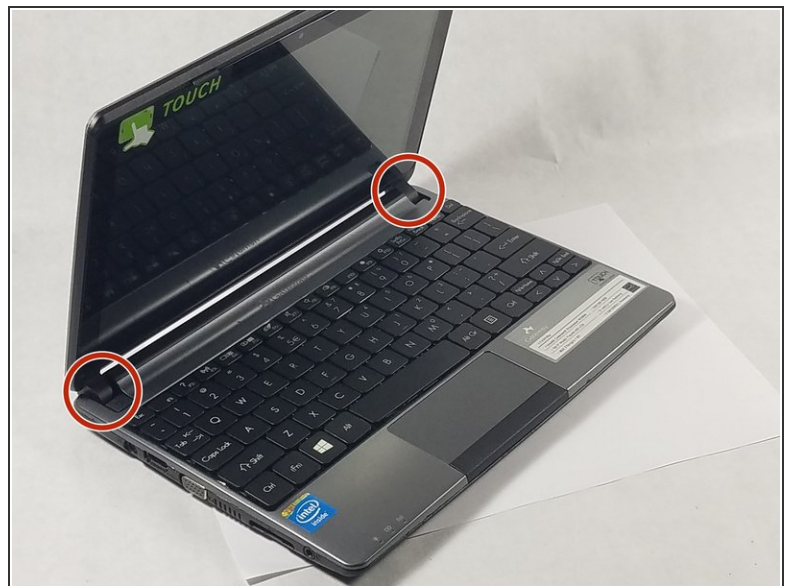
- Pull the two marked tabs towards the outside of the computer to unlock them.

Step 3



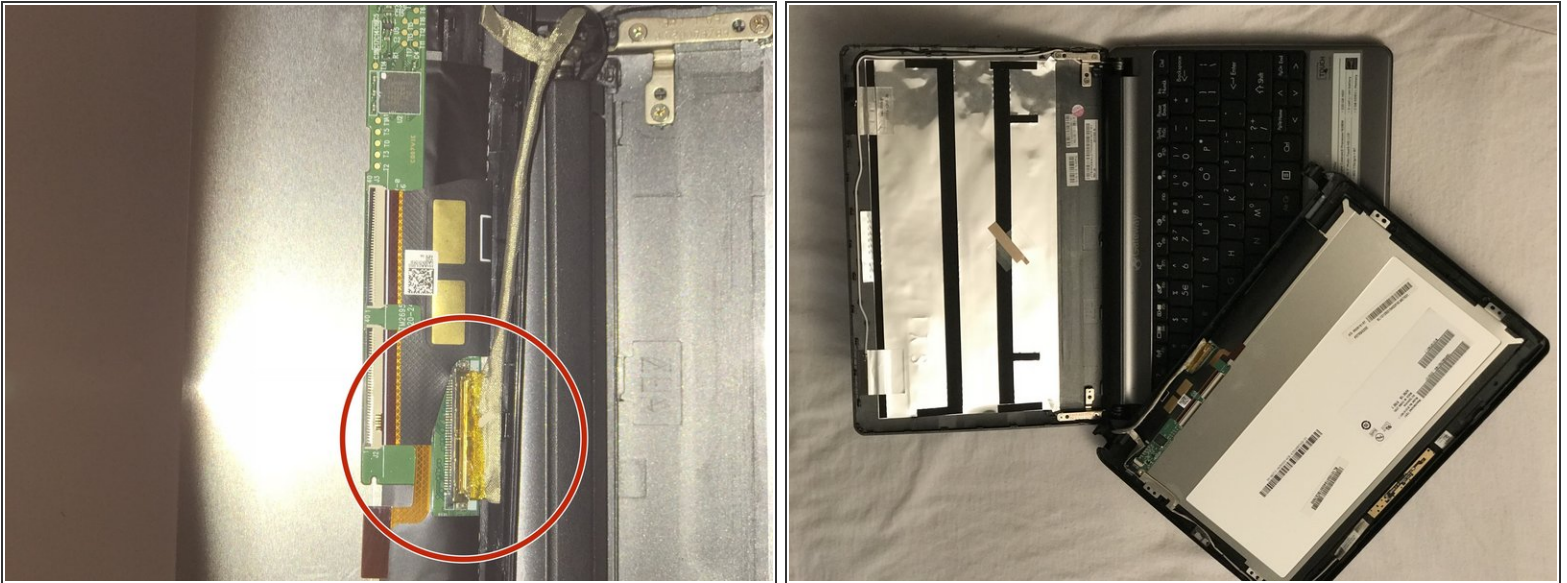
- While keeping both of the tabs in the unlocked position, grab the battery and pull outwards, until the battery slides out from the rest of the computer.

Step 4 — Monitor



- Carefully use a spudger to separate the monitor from top panel.
- Gently remove lower hooks from the hinges. (see second image)

Step 5



- Once you completed separating the monitor from the top panel disconnect the cable shown here in red by raising the cable lock and pulling the wires away.
- The second image is how it should look once completely disconnected.

To reinstall your device, follow these instructions in reverse order.