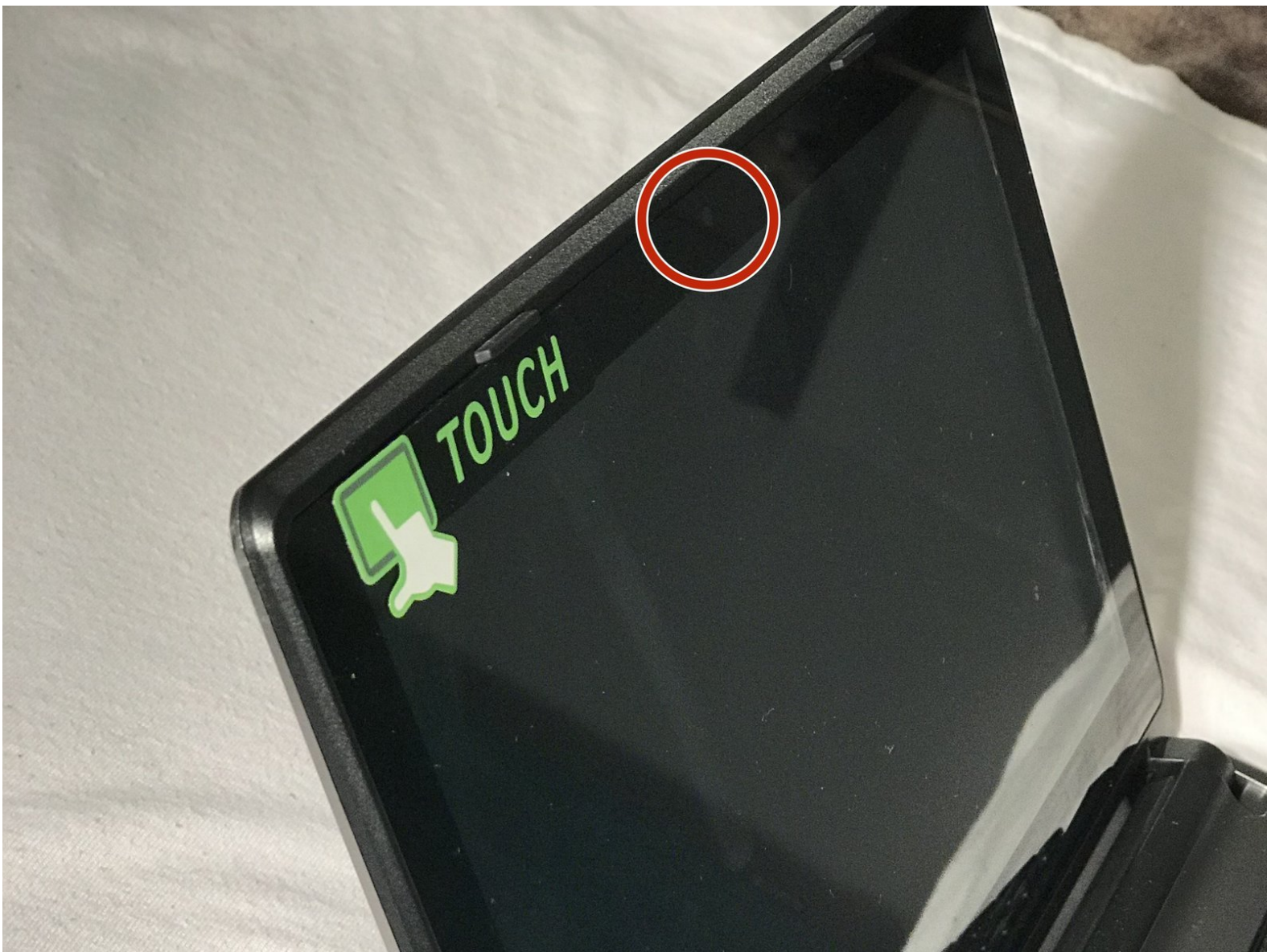




# Gateway LT41P10u Webcam Replacement

This guide will show the steps and tools necessary to repair the webcam for the Gateway LT41P10u laptop.

Written By: Patrick Raposo



---

## INTRODUCTION

This is a guide for the removal and replacement of the webcam from the Gateway LT41P10u laptop.

---



### TOOLS:

- [Spudger](#) (1)
-

## Step 1 — Battery



- Place the laptop upside down on a flat surface so you can see the battery.

## Step 2



- Pull the two marked tabs towards the outside of the computer to unlock them.

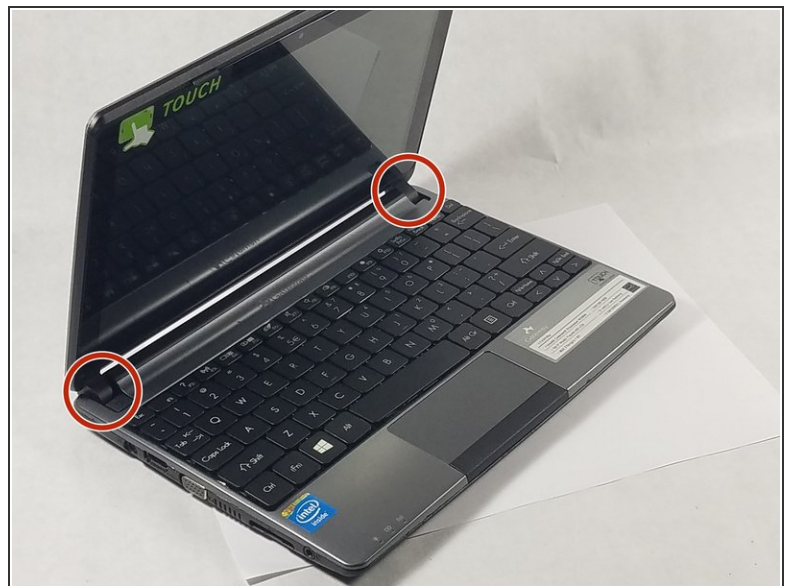


### Step 3



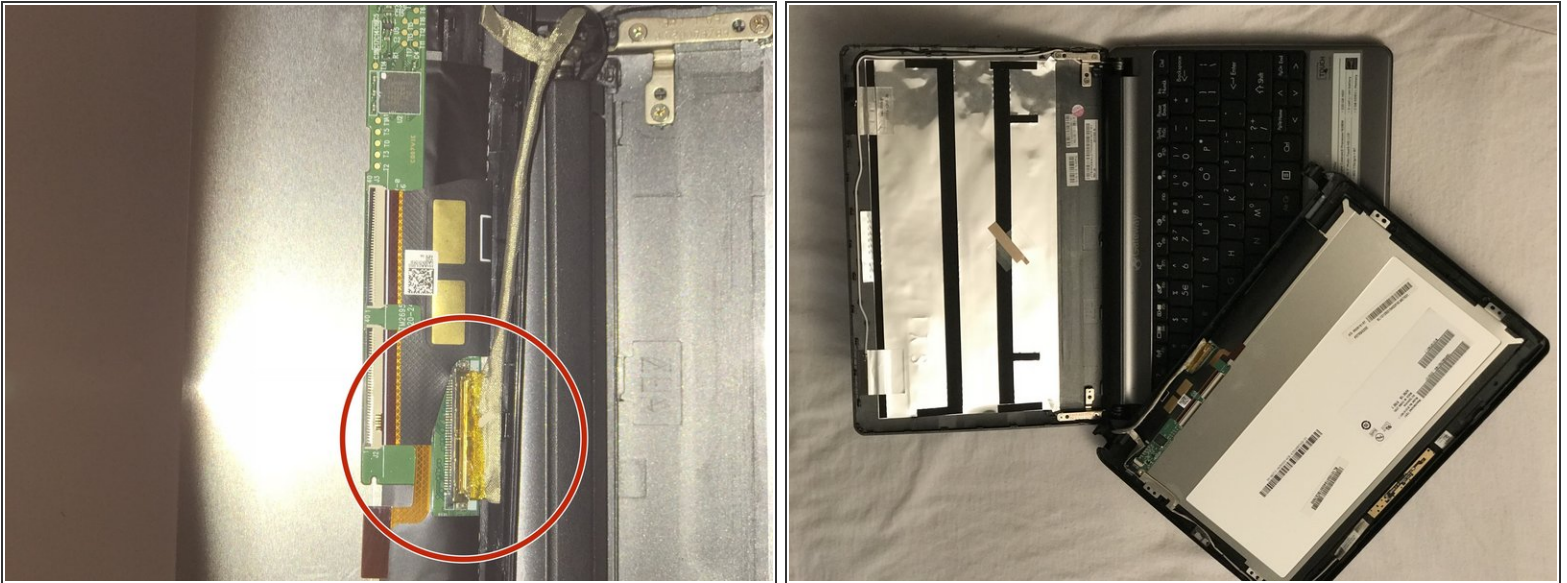
- While keeping both of the tabs in the unlocked position, grab the battery and pull outwards, until the battery slides out from the rest of the computer.

### Step 4 — Monitor



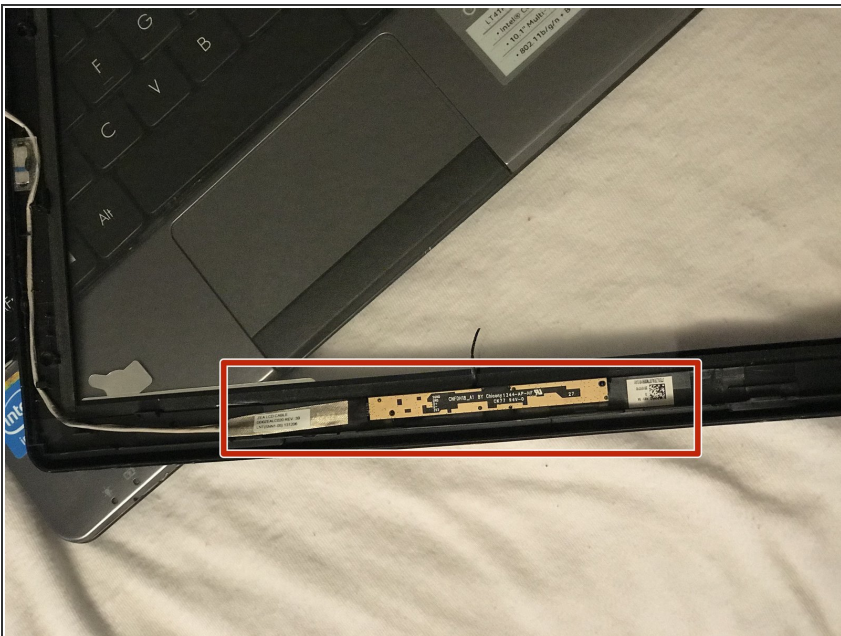
- Carefully use a spudger to separate the monitor from top panel.
- Gently remove lower hooks from the hinges. (see second image)

## Step 5



- Once you completed separating the monitor from the top panel disconnect the cable shown here in red by raising the cable lock and pulling the wires away.
- The second image is how it should look once completely disconnected.

## Step 6 — Webcam



- Using a plastic spudger or fingers gently remove webcam hardware from front screen. A gentle heat source can be used to easily remove glued down parts.
- Once webcam hardware is removed from front screen, it can be removed by hand from the wiring and replaced.

- 
- **Perform these steps carefully as smaller parts are more likely to break.**
- 

To reassemble your device, follow these instructions in reverse order.