



Gateway Lt4004u Keyboard Replacement

This is a step-by-step guide for removing and replacing the Gateway LT4004u keyboard.

Written By: Carlisle Hiott



INTRODUCTION

This is a moderately difficult process. There aren't many steps, but make sure you follow the first steps closely to insert the card correctly.



TOOLS:

- [Jimmy](#) (1)
 - [iFixit Opening Picks set of 6](#) (1)
-

Step 1 — Battery



- Place the laptop face down in front of you.
- Locate the battery lock switches on the left and right top corners of the bottom of the device indicated by the red circles.
- Pinch the switches and slide toward the edges of the computer to unlock.

Step 2



- Once the switches have both been unlocked, push the battery upwards away from the rest of the laptop.
- Remove the battery from the laptop.

Step 3 — Keyboard



- Open the laptop so that the screen and keyboard are facing you.
- Identify the 5 tabs above the function keys in the crevice that attaches the keyboard to the main frame.

Step 4



- Use an opening pick to push each tab away from you.
- Use an opening tool to push the middle tab until you hear a click. Begin to push the tool downward into the computer and slide the card along the length of the keyboard, as you overcome the five tabs.

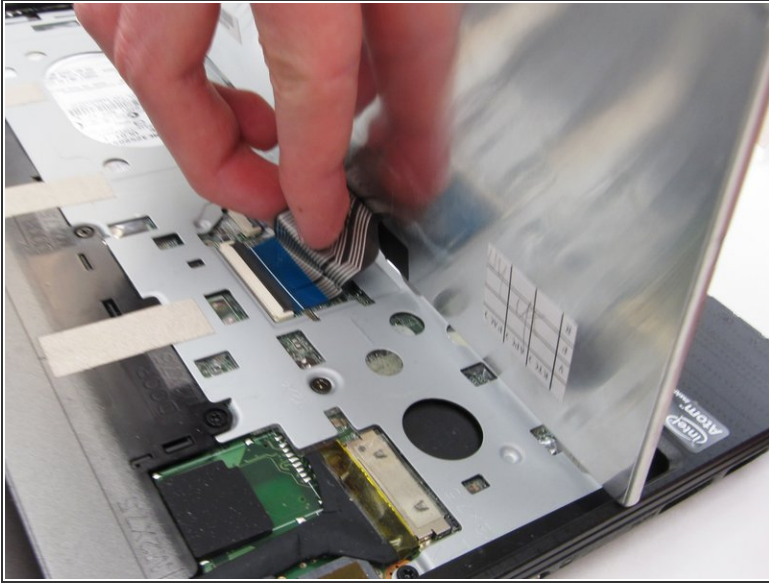
 A clicking sound is normal and no cause for alarm.



Step 5



- Begin to slide the plastic card under the top edge of the keyboard. You will hear popping sounds and the keyboard will eventually be released.
- Carefully pry the keyboard from the main frame, starting at the top section.
- ⓘ Look at the intel sticker in this step and the next to orient your computer with the pictures.

Step 6



-  Look at the intel sticker in this step and the previous step to orient your computer with the pictures.
- Unplug the thin blue connection piece beneath the keyboard. It may pop off on its own while you are prying off the keyboard.
 -  The popping noise will not hurt the computer.
 - Once the thin blue plastic has been detached, remove the keyboard from the rest of the laptop.

To reassemble your device, follow these instructions in reverse order.