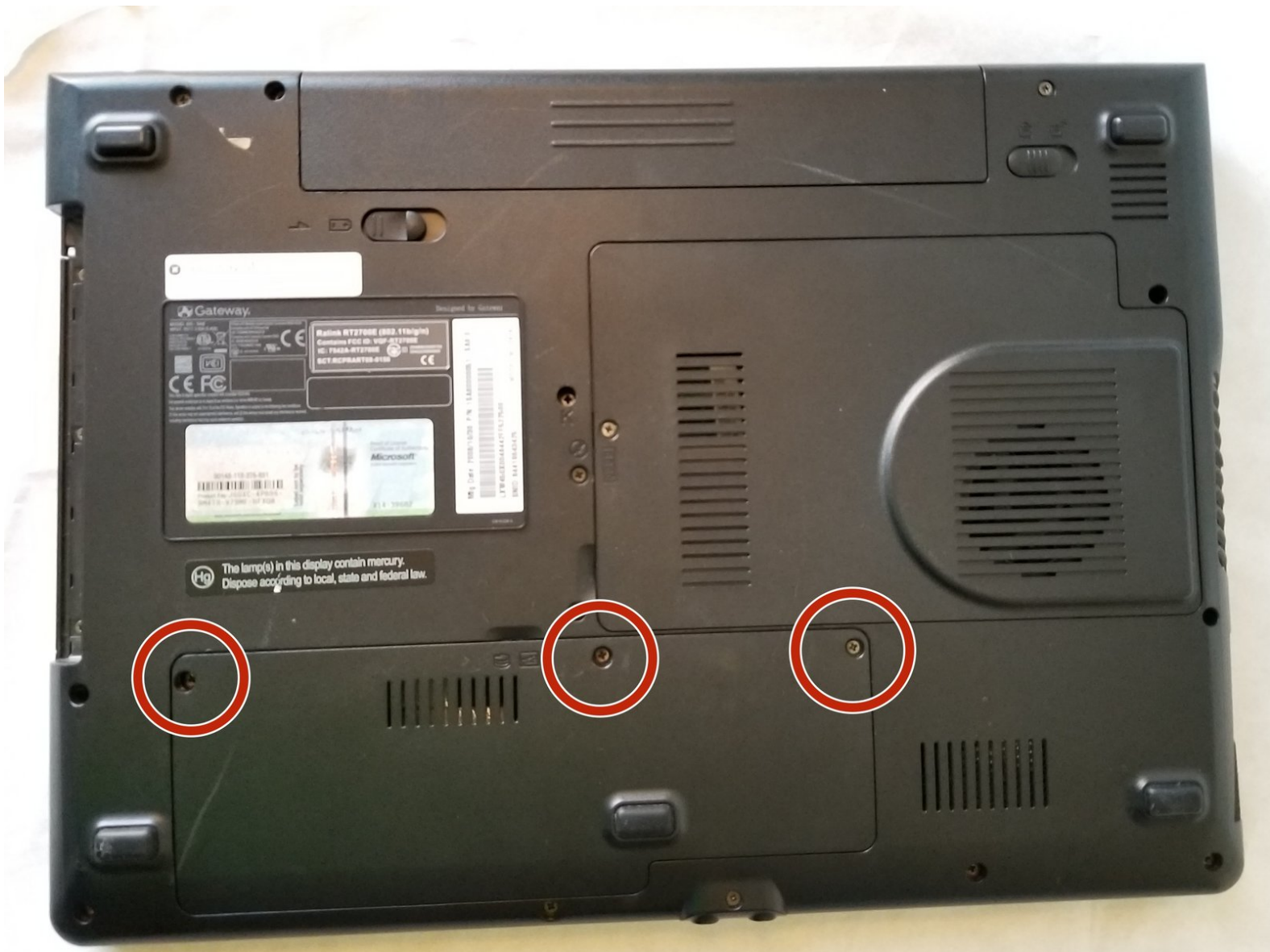




Gateway M-2626u Hard Drive Replacement

This guide will take you through the steps to replace a faulty hard drive in your Gateway M-2626u

Written By: Femi



INTRODUCTION

The replacement of the hard drive may be necessary if you experience crashes frequently or if there is data loss and file corruption. You can also upgrade the hard drive if you would like to have access to more storage or faster laptop in general, either way, try out this simple guide!

TOOLS:

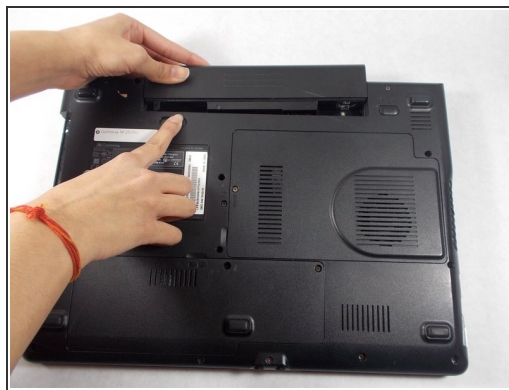
- [iFixit Opening Tools](#) (1)
 - [Phillips #1 Screwdriver](#) (1)
-

Step 1 — Battery



- ⚠ To prevent injury, make sure the laptop is not plugged in while removing the battery!
- Make the switch in the upper right corner of the turned over laptop is switched to the "unlocked" position. (the unlocked padlock icon)

Step 2



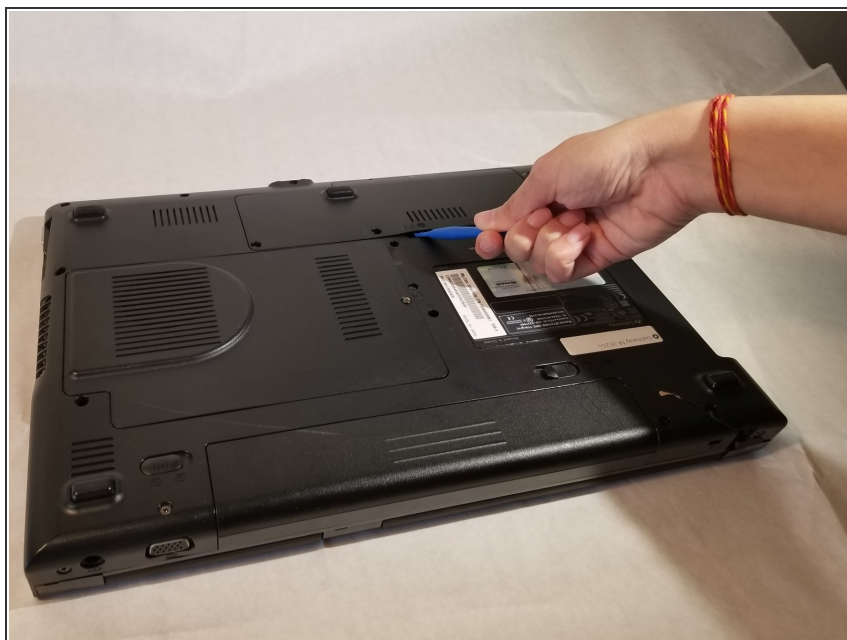
- Push the switch to the right, toward the inside of the computer to dislodge the battery.
- Finally, pull the battery outwards and away from the laptop as depicted in this image.

Step 3 — Hard Drive



- Using the Phillips #1 screwdriver, remove the three 6mm screws holding the hard drive panel in place.

Step 4



- Using the plastic opening tool, pry open the plastic panel covering the hard drive.

Step 5



- Using your hands, carefully pull out the hard drive from its compartment.

To reassemble your device, follow these instructions in reverse order.