



Gateway MA6 Laptop RAM Replacement

Gateway MA6 ram upgrade or replacement.

Written By: Chris Naughton



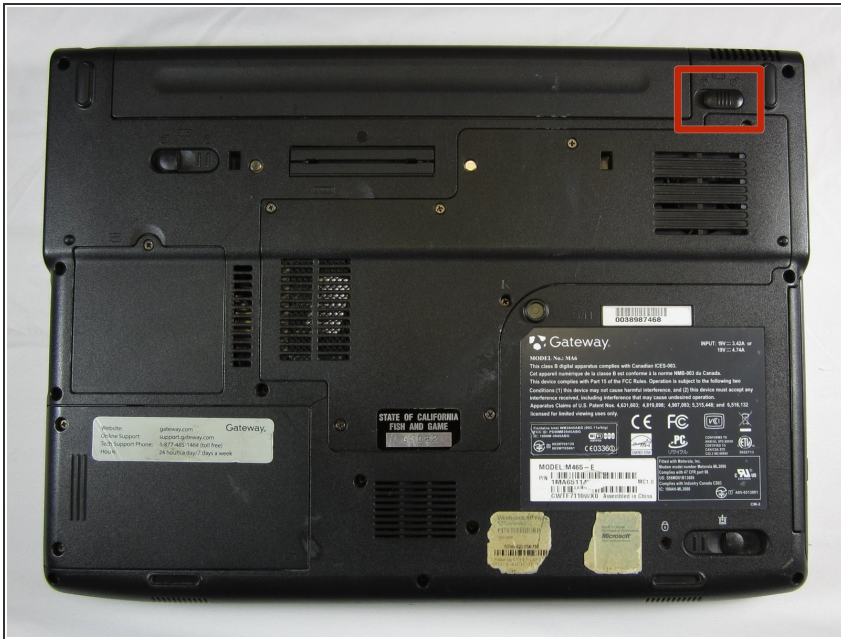
INTRODUCTION

The RAM in this laptop can be accessed easily with very little disassembly. There are two slots that both accept PC2-5300S RAM.

TOOLS:

- [Phillips #0 Screwdriver](#) (1)
-

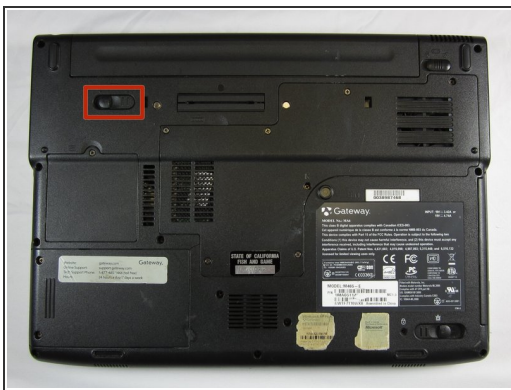
Step 1 — Battery



⚠ To prevent injury, make sure the laptop is unplugged before removing the battery.

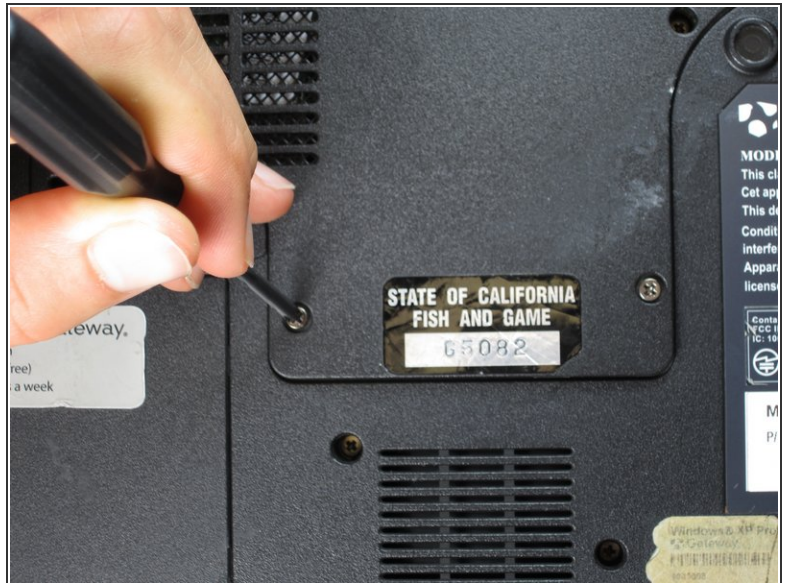
- Make sure the switch in the upper right corner of the laptop is switched to the "unlock" position (toward the unlocked padlock icon).

Step 2



- Pull the switch on the upper lefthand corner of the laptop towards the unlocked padlock icon.
- Firmly pull the battery outwards and away from the laptop.

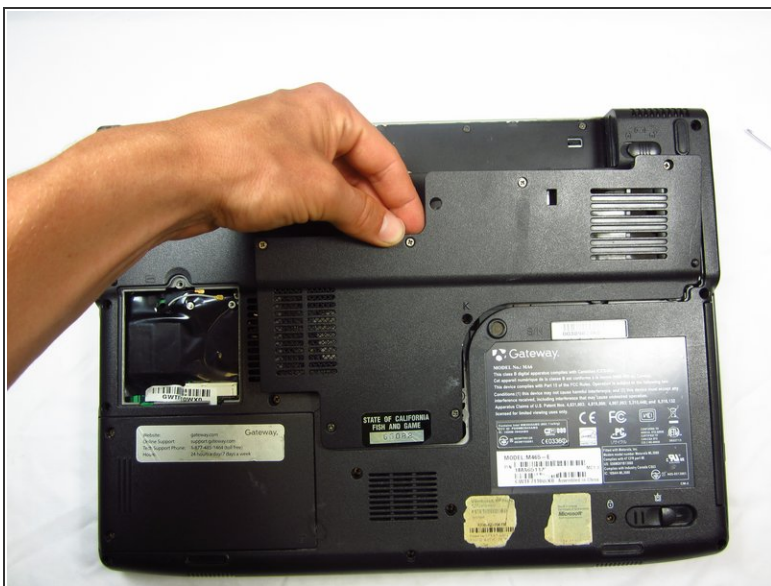
Step 3 — RAM



- Remove the seven 6 mm Phillips #0 screws from the back of the case.

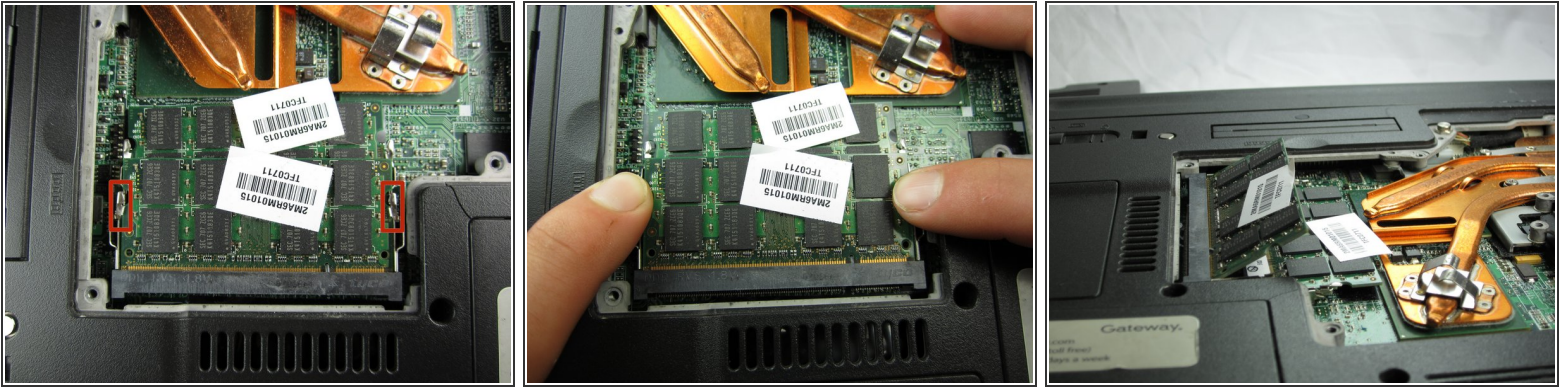
i Leave all the screws in the back plate and so you don't lose them.

Step 4



- Pull upwards on the top of the back cover to remove it.

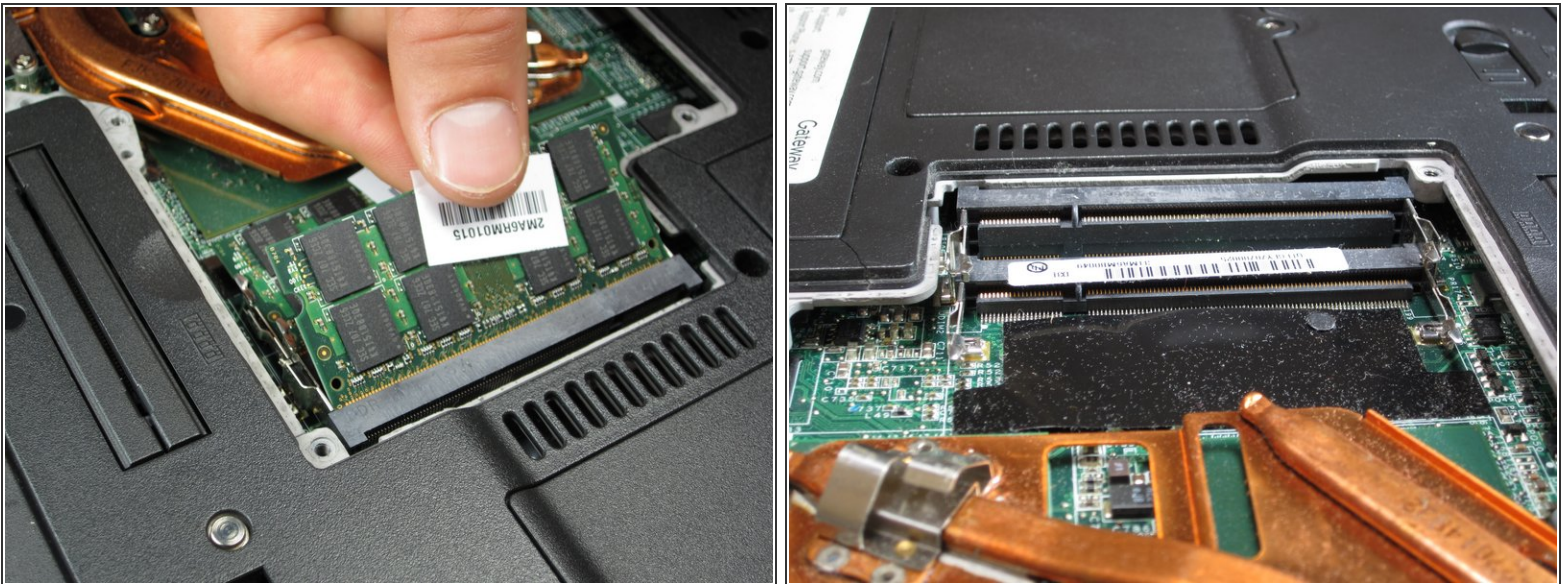
Step 5



- Pull outwards on the silver metal pins to release the upper RAM module.

i The module will automatically lift up 30° after it has been released.

Step 6



- Firmly grasp the outer portion of the RAM module, and pull it outward to remove it from the port.
- Repeat the same process for the lower RAM module.

To reassemble your device, follow these instructions in reverse order.