



Gateway MA7 CD/DVD Drive Replacement

This guide will help you replace the CD/DVD Drive in your Gateway MA7 Laptop.

Written By: Tim Rose



INTRODUCTION

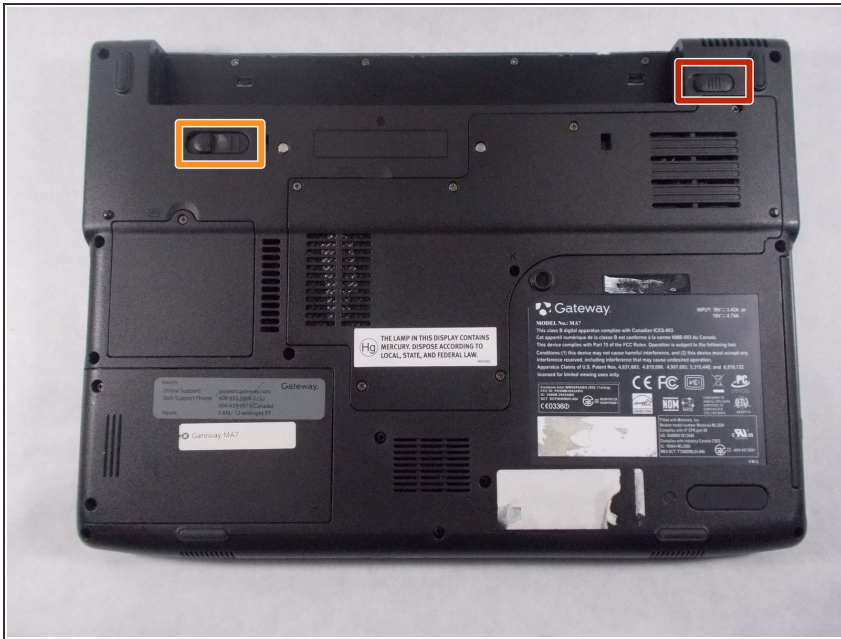
Removal of the CD/DVD drive. Use this guide to replace a defective CD/DVD drive, in the case that your disk drive is not working. If it's a problem with the drive itself, you will need a new one, otherwise there may be an issue with the device itself.



PARTS:

- [iFixit Opening Tools](#) (1)
 - [Phillips #0 Screwdriver](#) (1)
-

Step 1 — CD/DVD Drive



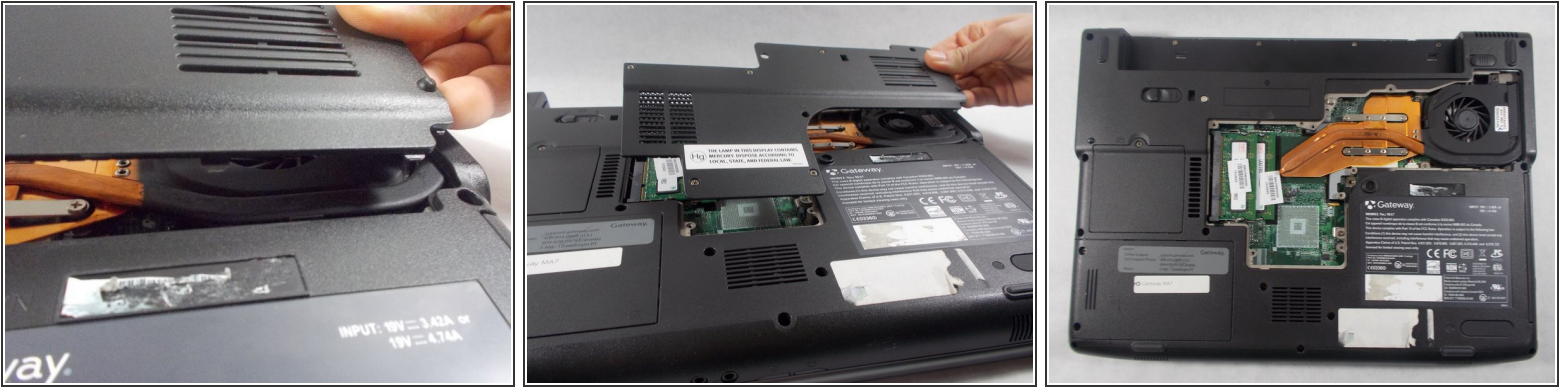
- ⚠ To prevent injury, make sure the laptop is unplugged before removing the battery.
- Push the locking tab over to the right away from the battery to unlock it from the laptop.
- Hold the additional locking tab to the left while pulling out the battery.

Step 2



- Remove the following screws securing the plastic panel from the bottom of the laptop:
 - Remove the seven 6 mm screws with a Phillips #0 screwdriver

Step 3



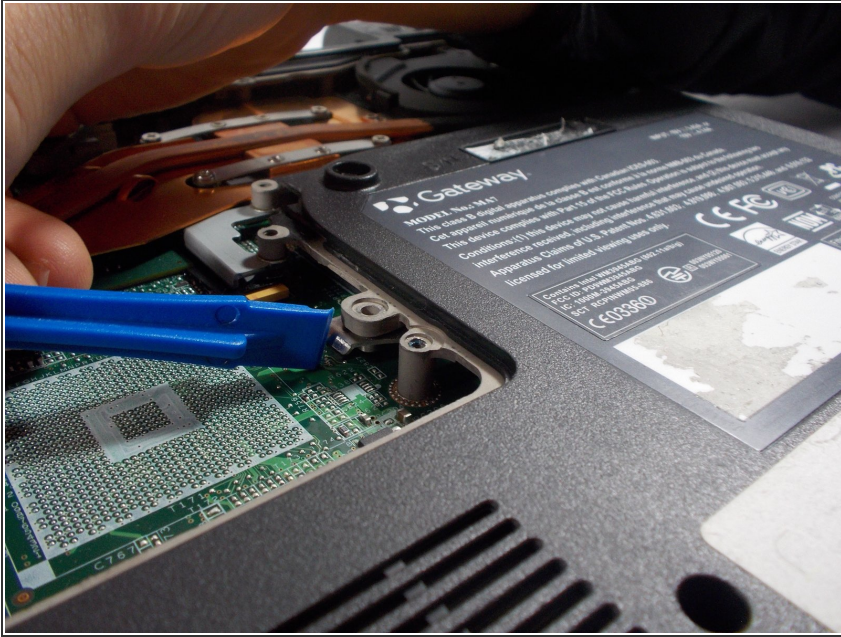
- Pull upwards on the top of the plastic panel to remove it.
- With the exception of the screw marked "K", all of the screws will remain connected to the plastic piece.

Step 4



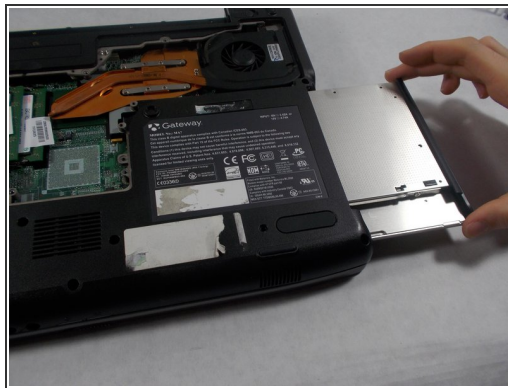
- Remove the following screws holding the DVD/CD drive in place:
 - One 6 mm Phillips #0

Step 5



- Use the edge of a plastic opening tool to push down on the metal latch preventing the drive from being pushed out.
- While pressing down, push the metal latch out away from the laptop.

Step 6



- Once the drive has been pried out, you can pull the CD drive out.

To reassemble your device, follow these instructions in reverse order.