



# Gateway MA7 Hard Drive Replacement

Use this guide to replace or upgrade the hard drive in your MA7

Written By: De'Andra Clarke



---

## INTRODUCTION

This guide will help you replace the Hard Drive in your Gateway MA7 laptop. The hard drive for your laptop stores all of your computer's information. If your hard drive is corrupt it will need to be replaced in order for it to turn on. You can also replace the hard drive if you want to have more storage.



### TOOLS:

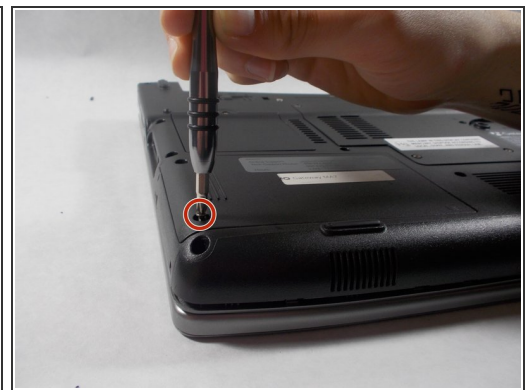
- [Phillips #0 Screwdriver](#) (1)
-

## Step 1 — Hard Drive



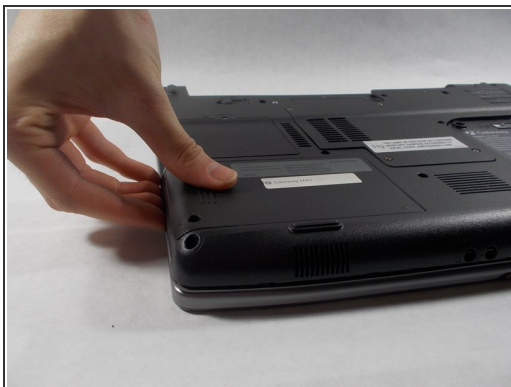
- ⚠ To prevent injury, make sure the laptop is unplugged and off before removing the battery.
- To unlock the battery slide the switch to the right in the upper right hand corner.

## Step 2



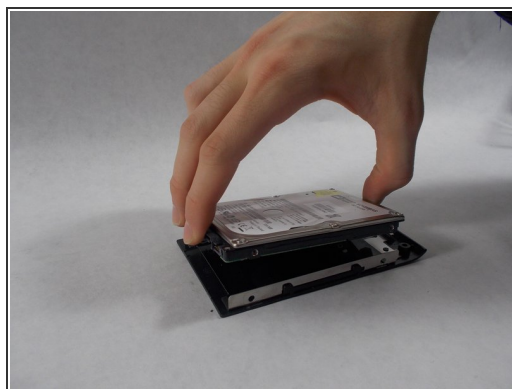
- Remove the two 6 mm Phillips #0 screws from the back of the hard drive cover.

### Step 3



- Press down firmly on the hard drive and pull leftwards.

### Step 4



- Remove two 4 mm Phillips #0 screws from the plastic hard drive cover.
- Lift the hard drive up from the plastic cover.

To reassemble your device, follow these instructions in reverse order.