



Gateway MA7 RAM Replacement

This guide will show you how to remove the two memory modules from the laptop.

Written By: Tim Rose



INTRODUCTION

More Random Access Memory (RAM) allows the laptop to run more programs simultaneously, and speed up certain processes. The Gateway MA 7 takes PC2-4200 DDR2 533Mhz 200PIN SODIMM RAM.



PARTS:

- [Phillips #0 Screwdriver](#) (1)
-

Step 1 — RAM



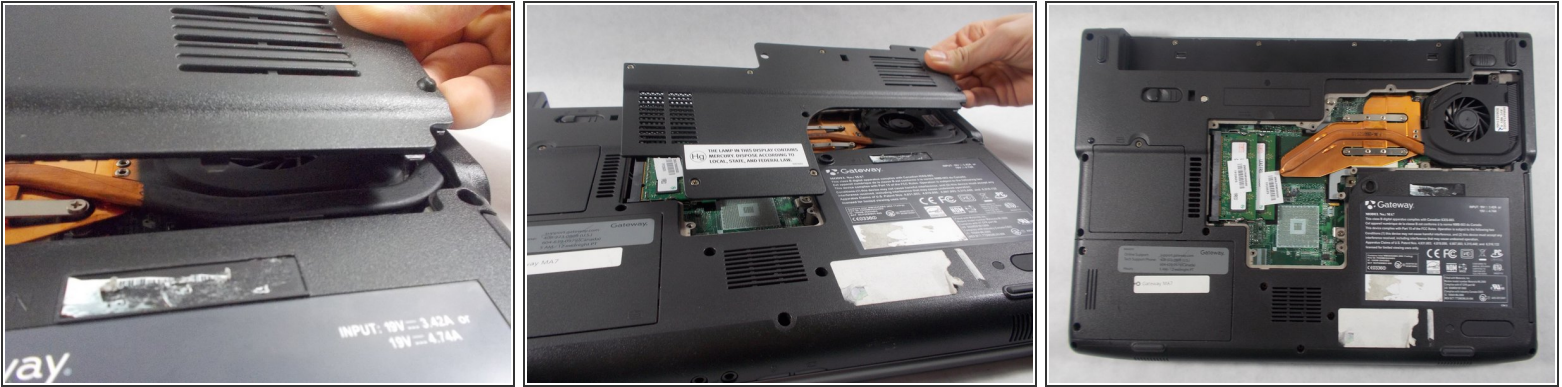
- ⚠ To prevent injury, make sure the laptop is unplugged before removing the battery.
- Push the locking tab over to the right away from the battery to unlock it from the laptop.
- Hold the additional locking tab to the left while pulling out the battery.

Step 2



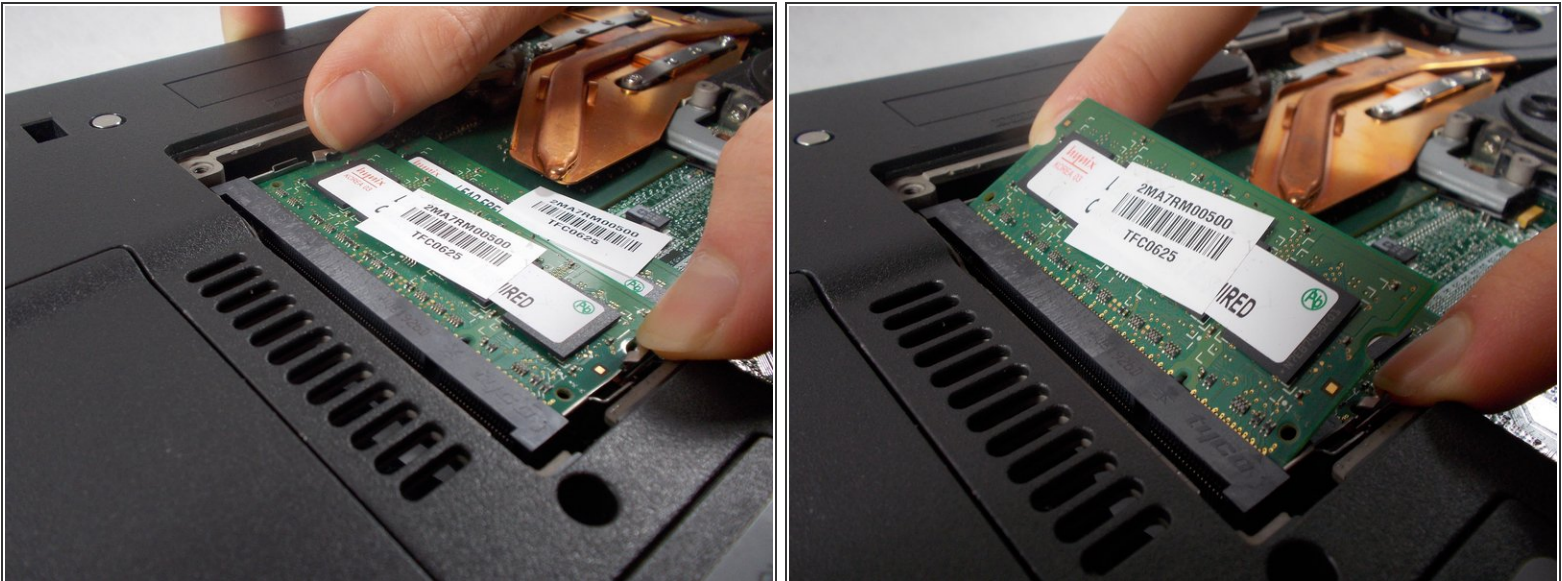
- Remove the following screws securing the plastic panel from the bottom of the laptop:
 - Seven 6 mm Phillips #0

Step 3



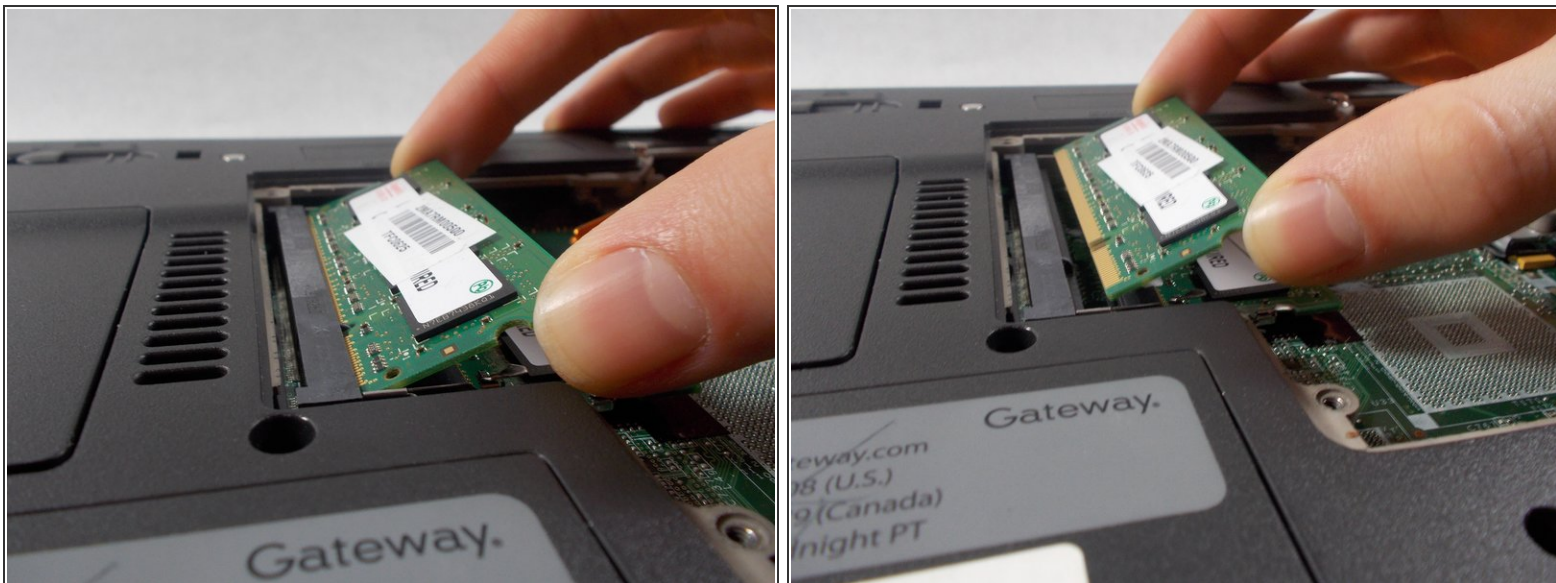
- Pull upwards on the top of the plastic panel to remove it.
- With the exception of the screw marked "K", all of the screws will remain connected to the plastic piece.

Step 4



- Push the two metal tabs (holding the module in place) apart in order to release it.

Step 5



- Pull the ram out of the motherboard at a 45 degree angle.

Step 6



- Repeat steps 4 & 5 for the other memory module.

To reassemble your device, follow these instructions in reverse order.