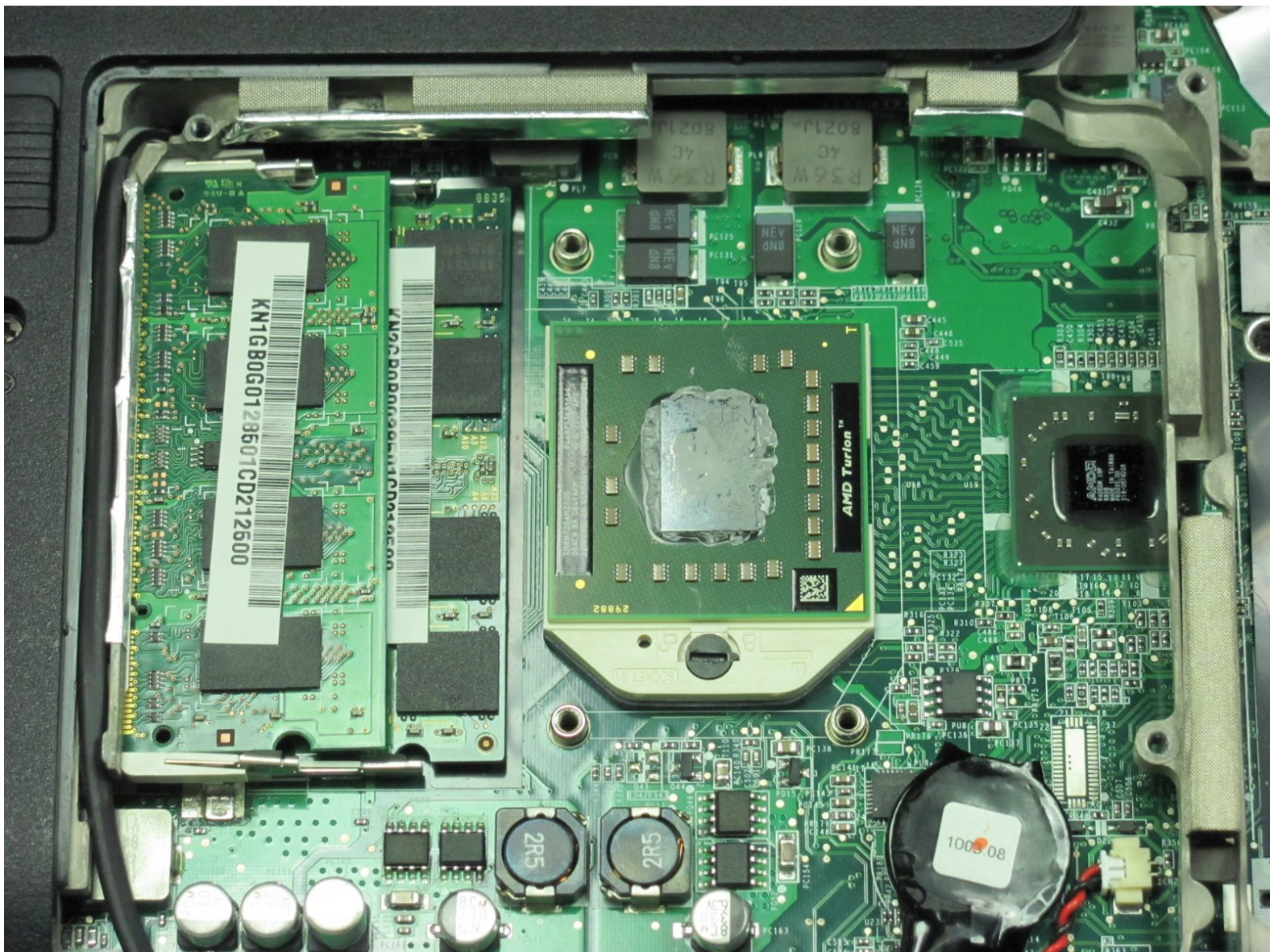




# Gateway MD2614u Processor Replacement

This guide shows you how to find the CPU and remove it from the laptop.

Written By: Toni Pipes



---

## INTRODUCTION

You will use the fan repair guide to get to the CPU. Then, you will use the lock to remove the CPU.

---

### TOOLS:

- [Phillips #00 Screwdriver](#) (1)
  - [2.5 mm Flathead Screwdriver](#) (1)
-



## Step 1 — Back Cover



- Place the laptop so the back cover is facing up.

## Step 2



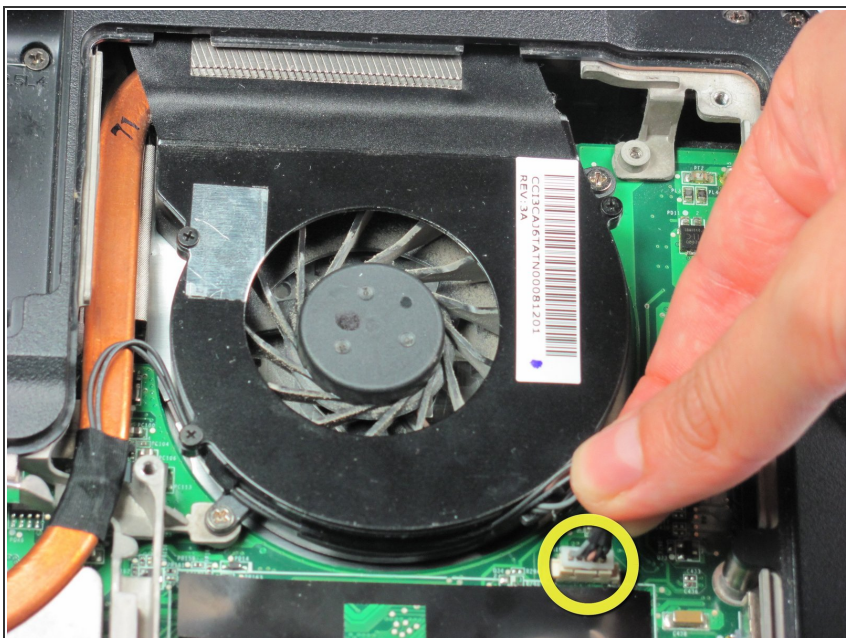
- Remove the 8 screws from the back cover using the Phillips #00 screwdriver.

## Step 3



- Lift off the cover.

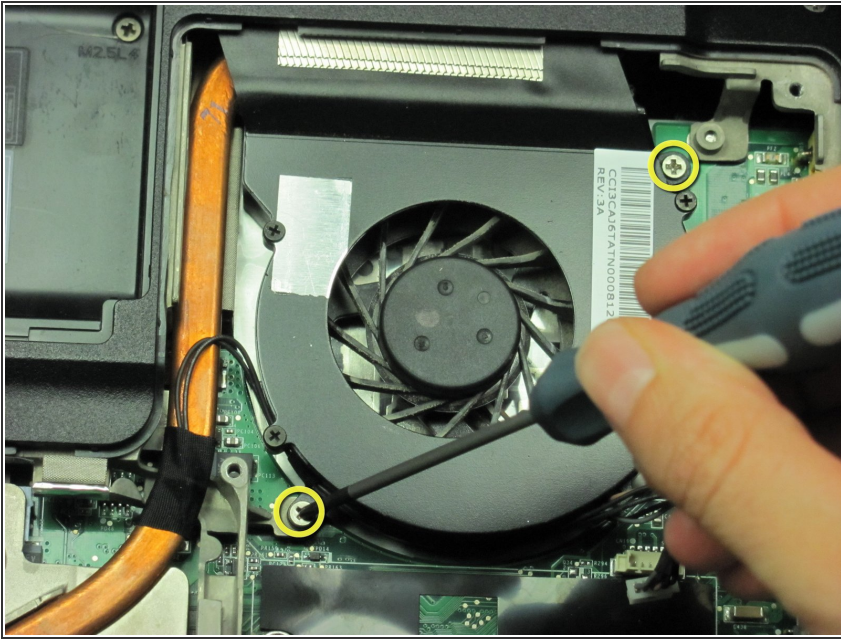
## Step 4 — Fan



- Unplug the fan's power cable, which is a group of black wires attached to a white plastic head on the motherboard.
- ⚠ Pull the plastic part of the cable, not the wires, so that the plug does not break.

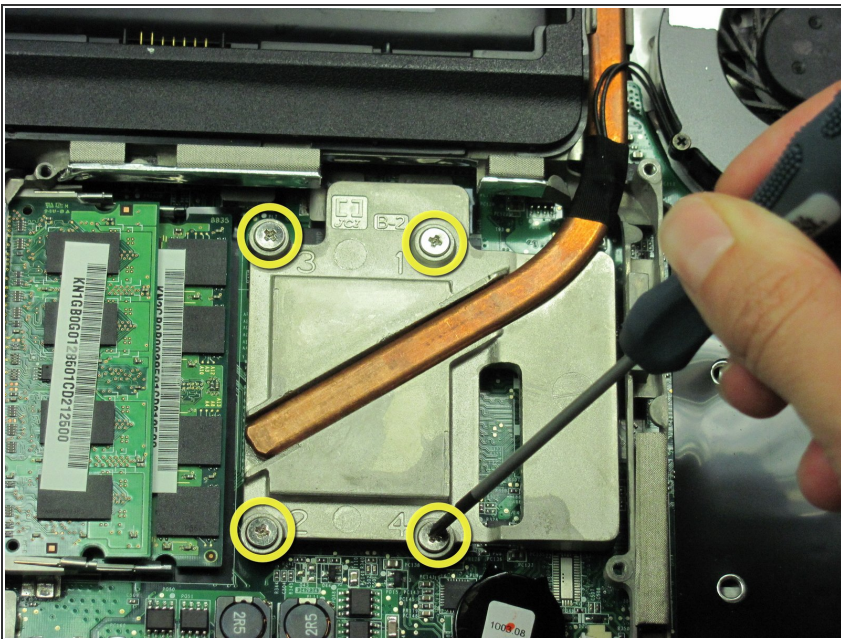


## Step 5



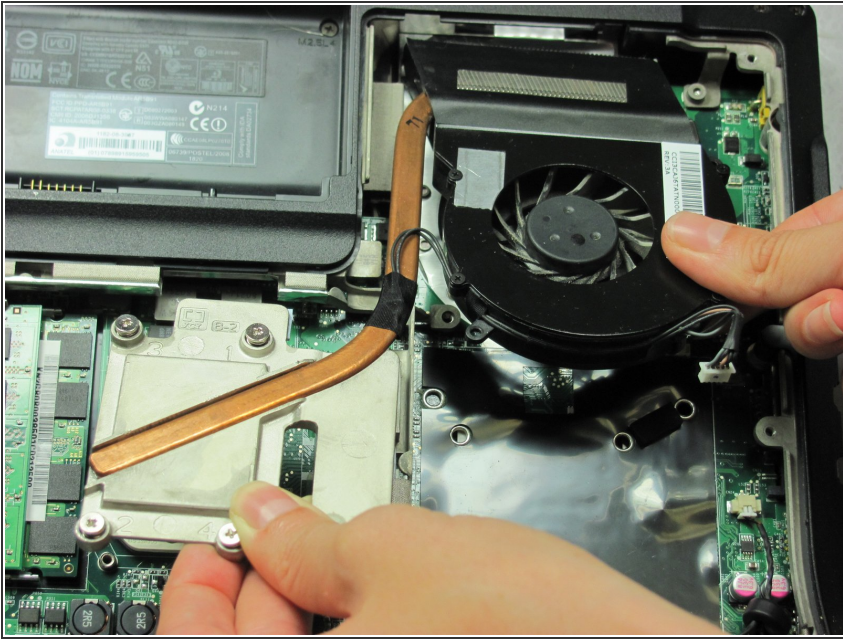
- Remove the two screws located on opposite sides of the fan with a Phillips #00 screw driver.

## Step 6



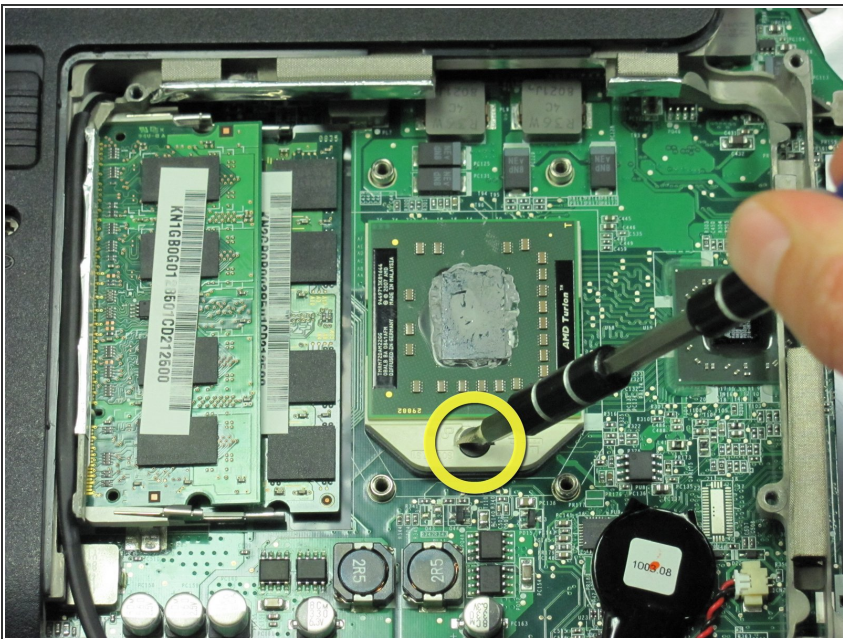
- The fan is permanently attached to the silver heat sink next to the RAM.
- To completely remove the parts, loosen the heat sink's four screws with a Phillips #00 screw driver.
- ⓘ Take out the screws in the numerical order shown on the heat sink.

## Step 7



- Pull the fan and heat sink toward you at a 20 degree angle upward.

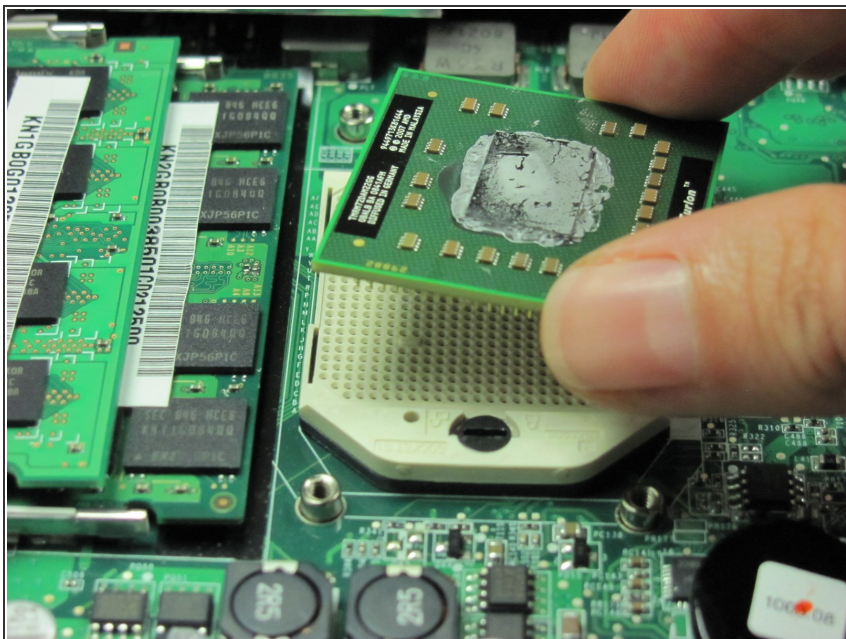
## Step 8 — Processor



- The CPU is located under the heat sink you just removed. It is a green card on a white plastic surface. There is a black lock on one side of the plastic. Rotate the CPU lock 180 degrees counterclockwise with a 3.0 mm Flathead screw driver.
- ⓘ You will hear a click as the lock unlocks.



## Step 9



- Place your fingers on opposite edges of the green card.
- Carefully lift the CPU upward.

To reassemble your device, follow these instructions in reverse order.