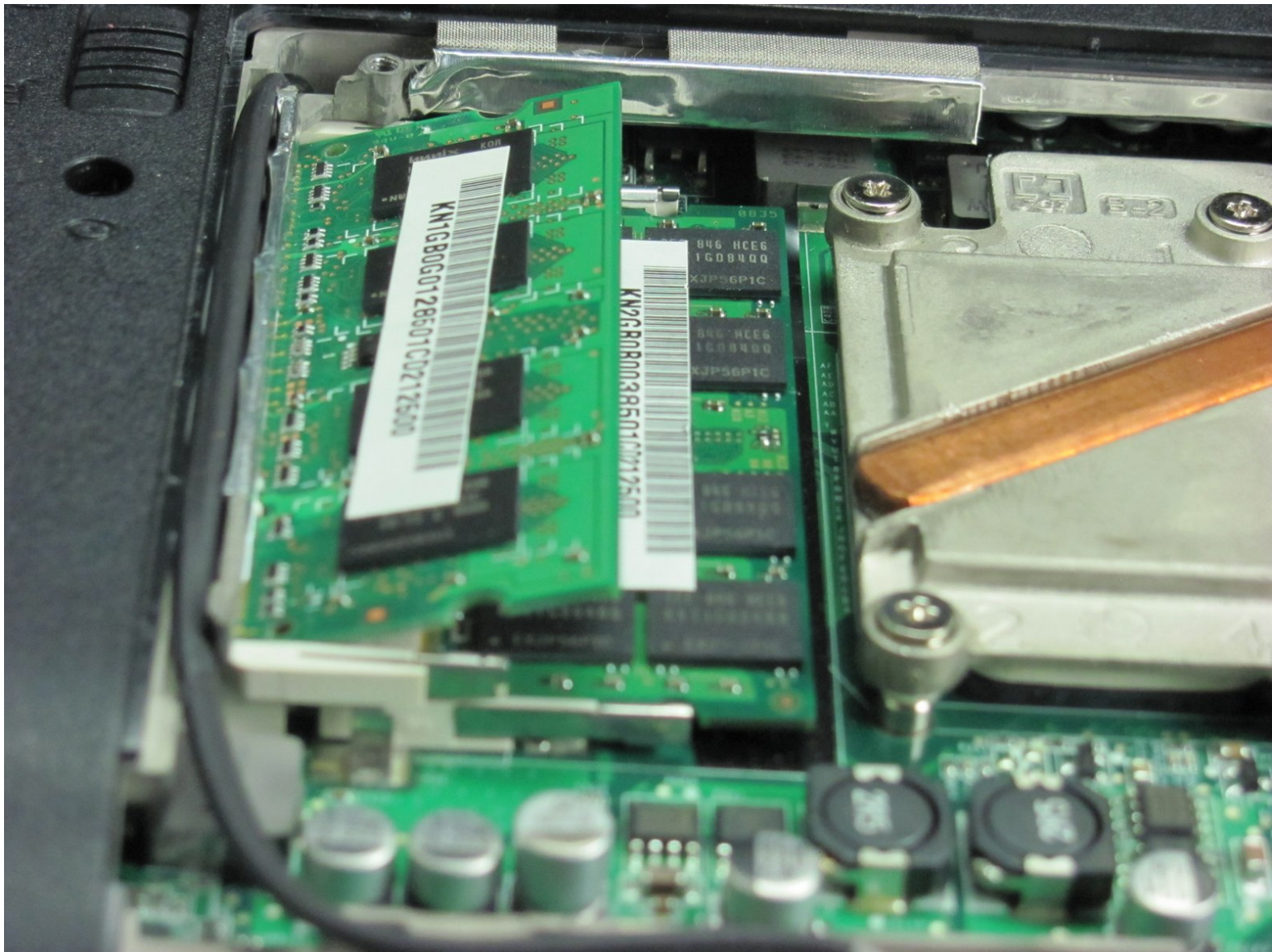




# Gateway MD2614u RAM Replacement

This guide locates the RAM and shows you how to disassemble/reassemble it.

Written By: Toni Pipes



## INTRODUCTION

You are going to remove the back cover, locate the RAM, take out the RAM, and either replace it or reinstall it.



### TOOLS:

- [Phillips #00 Screwdriver](#) (1)



### PARTS:

- [PC2-5300 1 GB RAM Chip](#) (1)
- [PC2-5300 2 GB RAM Chip](#) (1)

## Step 1 — Back Cover



- Place the laptop so the back cover is facing up.

## Step 2



- Remove the 8 screws from the back cover using the Phillips #00 screwdriver.

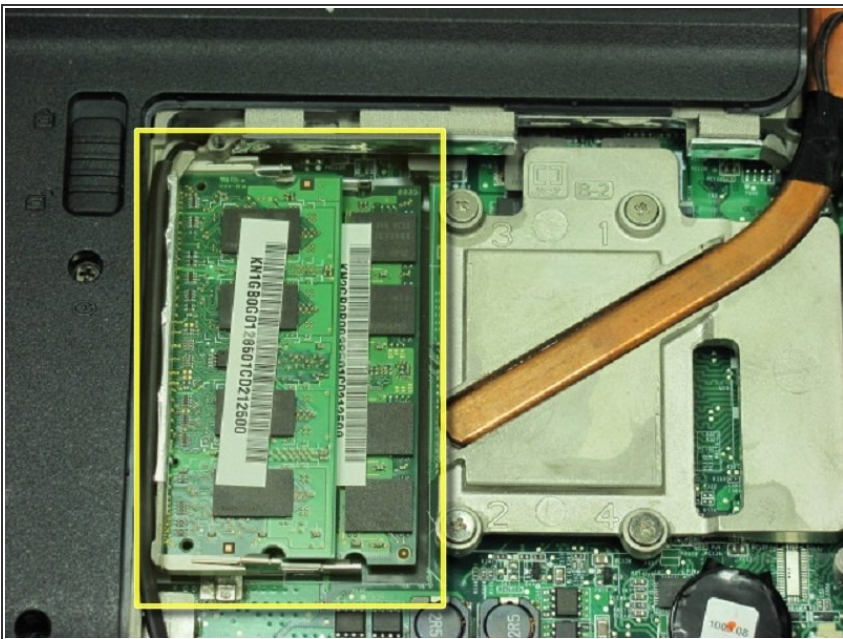


### Step 3



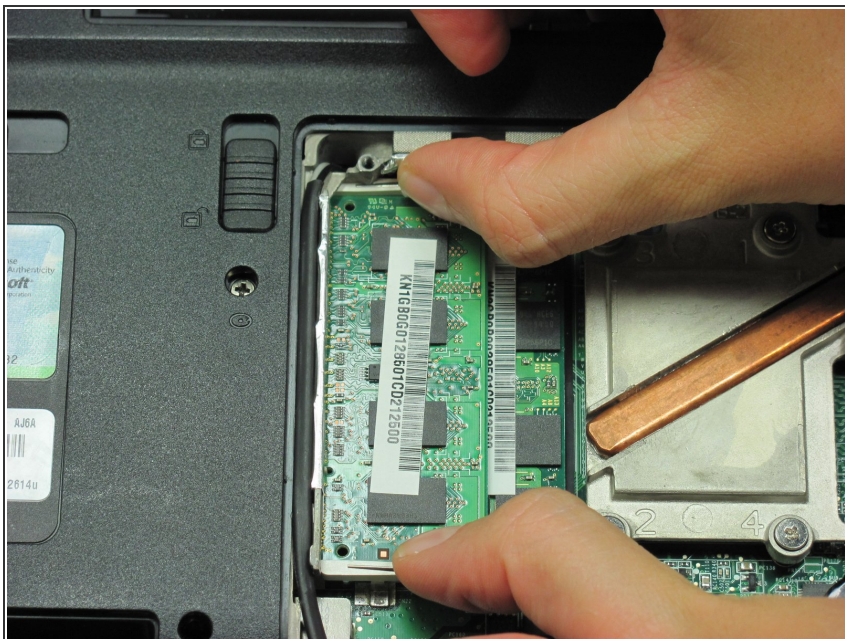
- Lift off the cover.

### Step 4 — RAM



- Identify the RAM, which is a stack of two green cards in the upper left-hand corner.

## Step 5



- There are silver tabs on both sides of the ram. Simultaneously push the silver tabs outward.

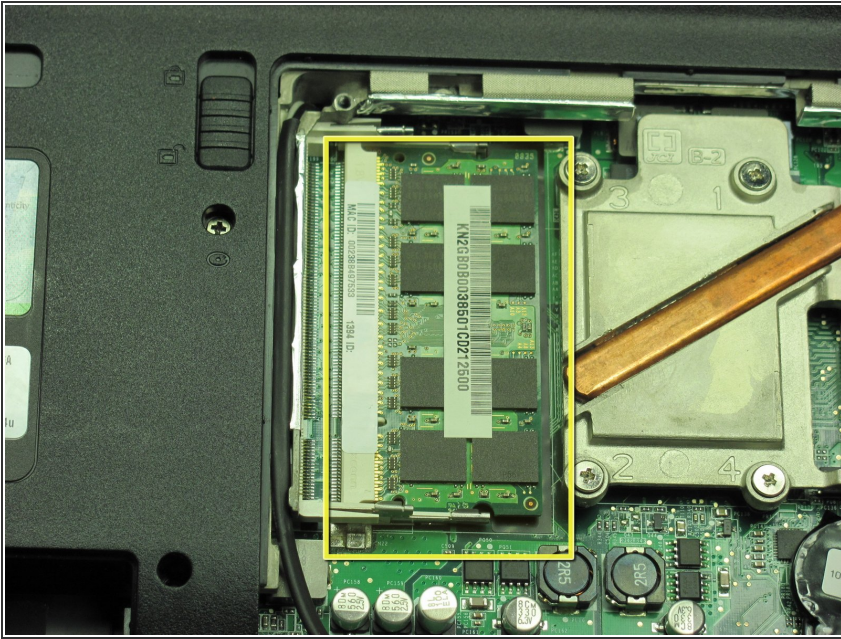
## Step 6



- The card pops up 20 degrees and is loose enough to remove with your hand.
- Carefully pull the card to the right horizontally.



## Step 7



- Follow the same steps for the second RAM card, which is under the one you just removed.

To reassemble your device, follow these instructions in reverse order.