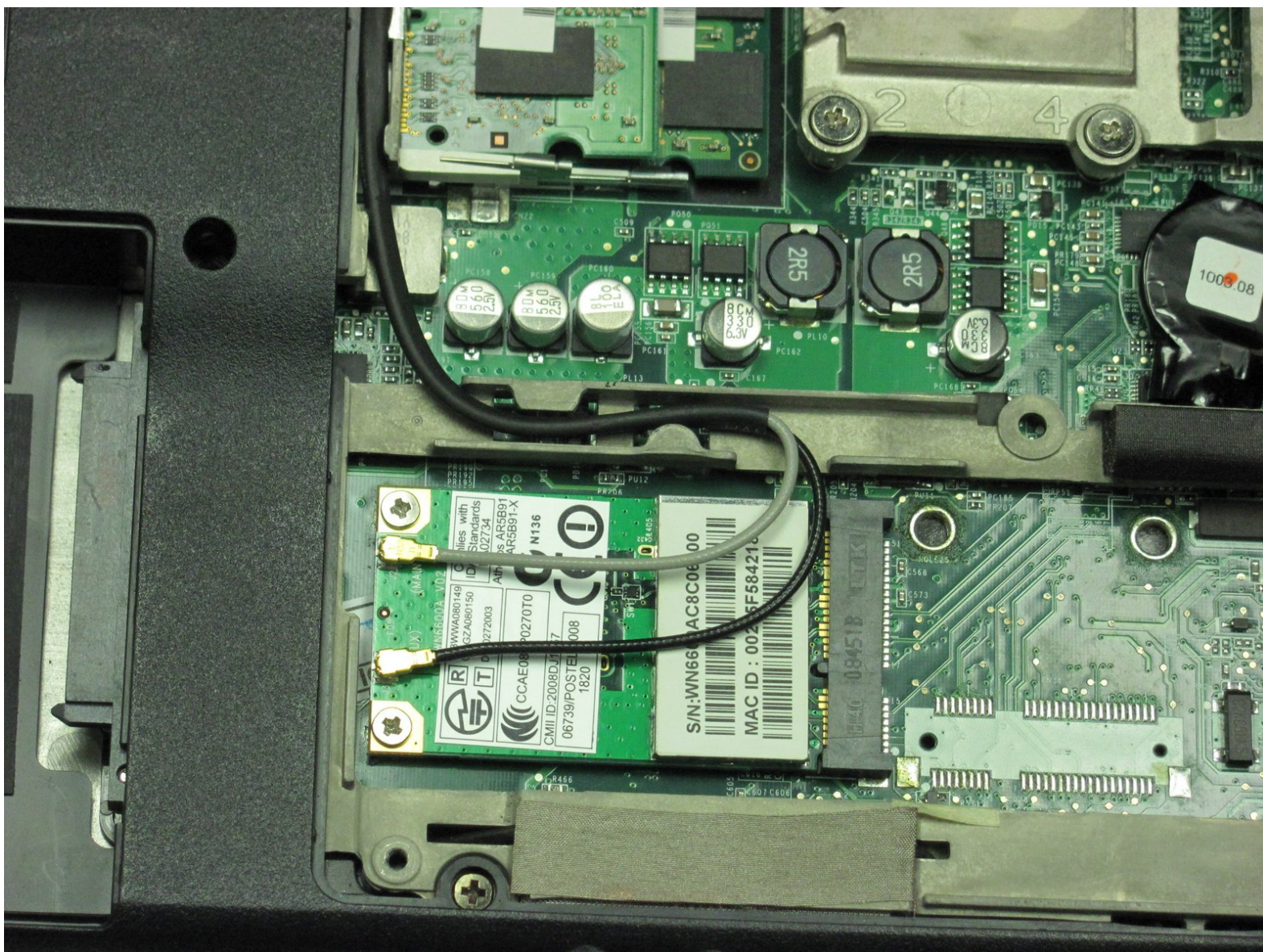




# Gateway MD2614u Wireless Card Replacement

How to replace a Gateway MD2614u wireless card.

Written By: Toni Pipes



---

## INTRODUCTION

You are going to remove the back cover, remove wires and screws from the Wireless Card, and take it out. You can then either reassemble it or replace it.



### TOOLS:

- [Phillips #00 Screwdriver](#) (1)
-



## Step 1 — Back Cover



- Place the laptop so the back cover is facing up.

## Step 2



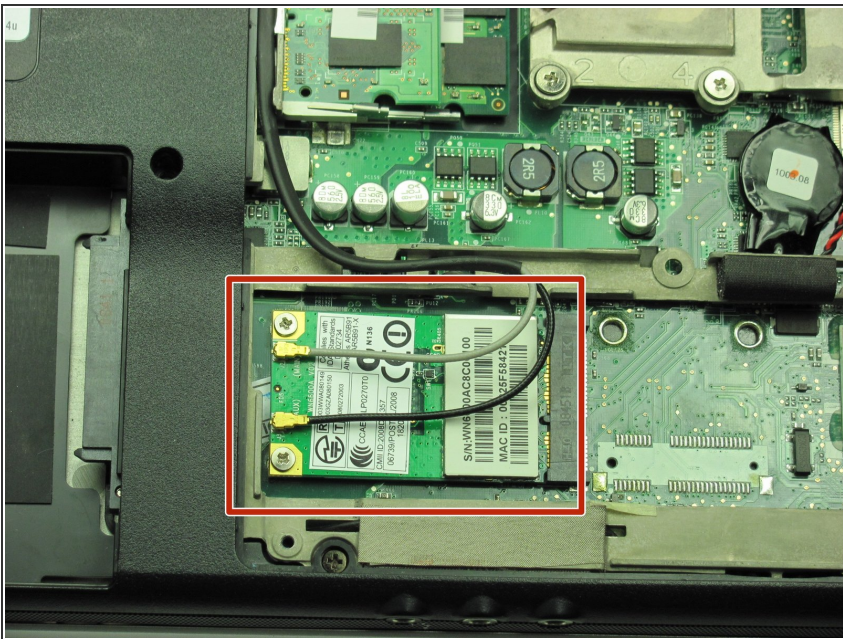
- Remove the 8 screws from the back cover using the Phillips #00 screwdriver.

## Step 3



- Lift off the cover.

## Step 4 — Wireless Card



- ① The wireless card is located to the right of the hard drive and below the RAM.



## Step 5



- i There are black and grey wires with gold heads attached to the top of the wireless card.
- To remove these wires, turn the gold heads counterclockwise and pull up.
- i You will hear a snap when the heads come off.
- i It does not matter which wire you remove first, but do so one at a time.

## Step 6



- Remove the two screws next to the wires with a Phillips #00 screwdriver.

## Step 7



- ① The card will pop up 20 degrees and is loose enough to remove with your hand.
- Carefully pull the card out to the left horizontally.

To reassemble your device, follow these instructions in reverse order.